

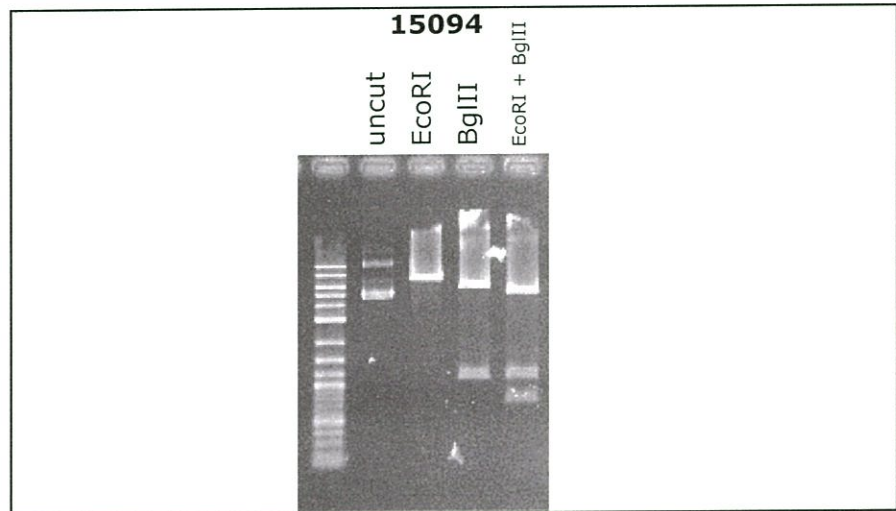
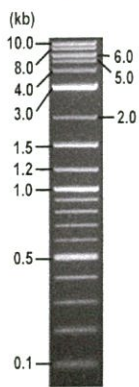


**RIKEN DNA BANK**

clone name : pmRFP-C1-mouse rabphilin

- Clone ID : RDB \_ 15094
- Lot : 15094 \_ A7F7
- DNA Concentration : 25 nanogram/microliter
- Volume : 40 microliter
- Form : DNA solution in TE buffer
- Host : DH5 alpha
- Culture : LB medium
- Antibiotics : 25 microgram/ml kanamycin
- Purification : QIAGEN QIAprep Spin Miniprep kit
- Digestion by restriction enzyme

1 kb Plus DNA Ladder  
(NEB#N3200L),  
250 ng/well



Electrophoresis : 100 nanogram DNA per lane ; 1% agarose gel , 1 x TAE Buffer

Restriction enzyme	Expected size of fragment
<b>EcoRI</b>	<b>6.9</b> kbp
<b>BglII</b>	<b>5.8, 1.1</b> kbp
<b>EcoRI + BglII</b>	<b>5.1, 1.1, 0.7</b> kbp
	kbp

● Confirmation of the insertion sequence

Please be sure to check our sequence analysis results before your request.

Sequence name	Primer ID	Primer name	Confirmed feature
Sequence - A	Pr0016	CMV_Forward	CMV pro, insert 5' (mRFP1-Gly linker-rabphilin)
Sequence - B	Pr0502	mRFP1-C_F	insert mid (mRFP1-Gly linker-rabphilin)
Sequence - C	Pr0109	SV40polyA-R	insert 3' (rabphilin)
Sequence - D	Pr0154	SV40pro_F_V2	NeoR_KanR
Sequence - E	-	-	-
Sequence - F	-	-	-
Sequence - G	-	-	-
Sequence - H	-	-	-

APPROVED BY :



S/N G:686 A:532 T:368 C:560 primer name *A* : CMV Forward

KB\_bop KB\_3500\_POP7\_BDTv3.mob

Jun 28, 2017 12:01PM, JST

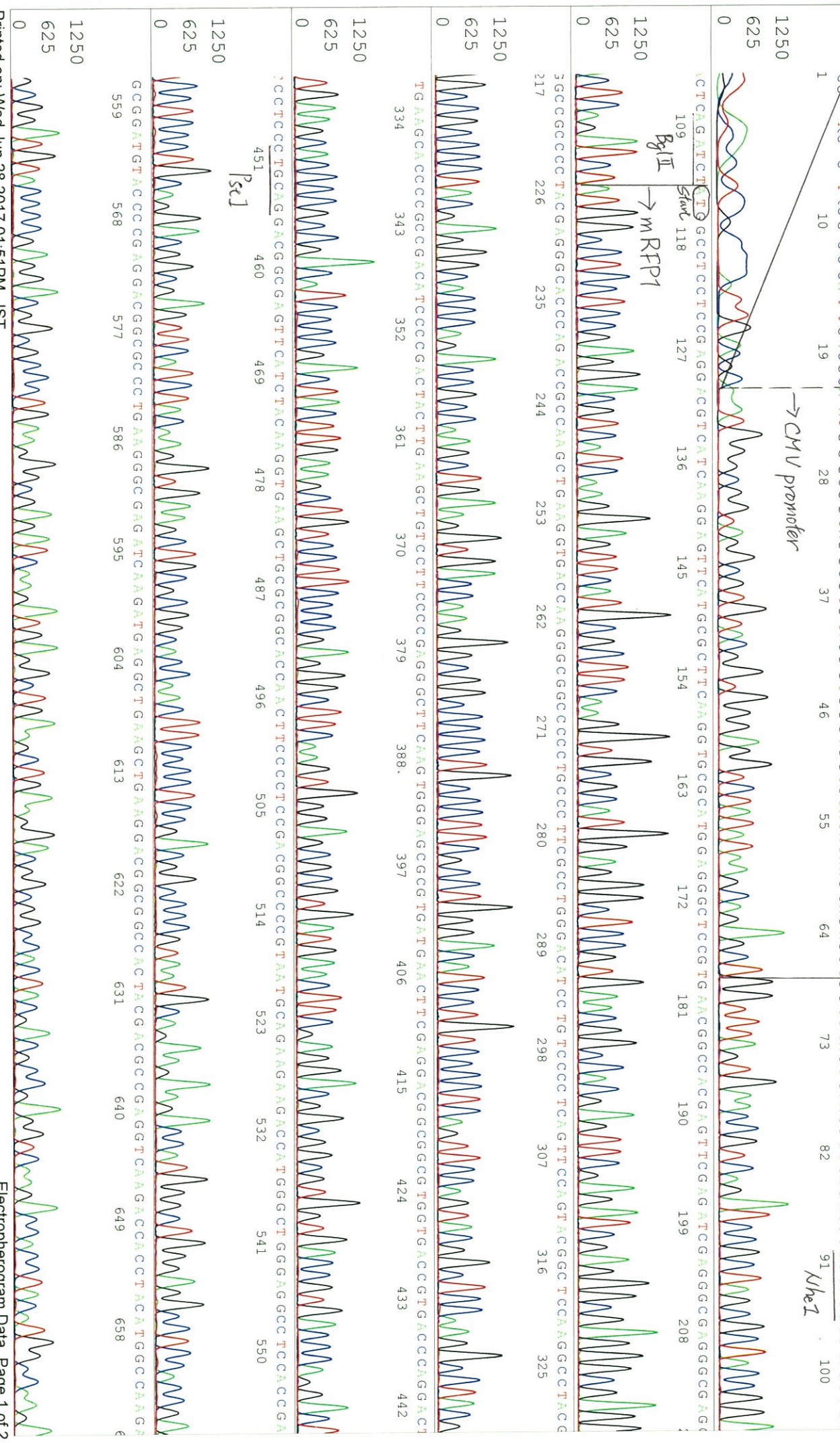
KB 1.4.1.8 Cap.12 5'-GCACCAAAATCAACGGGACTT-3'

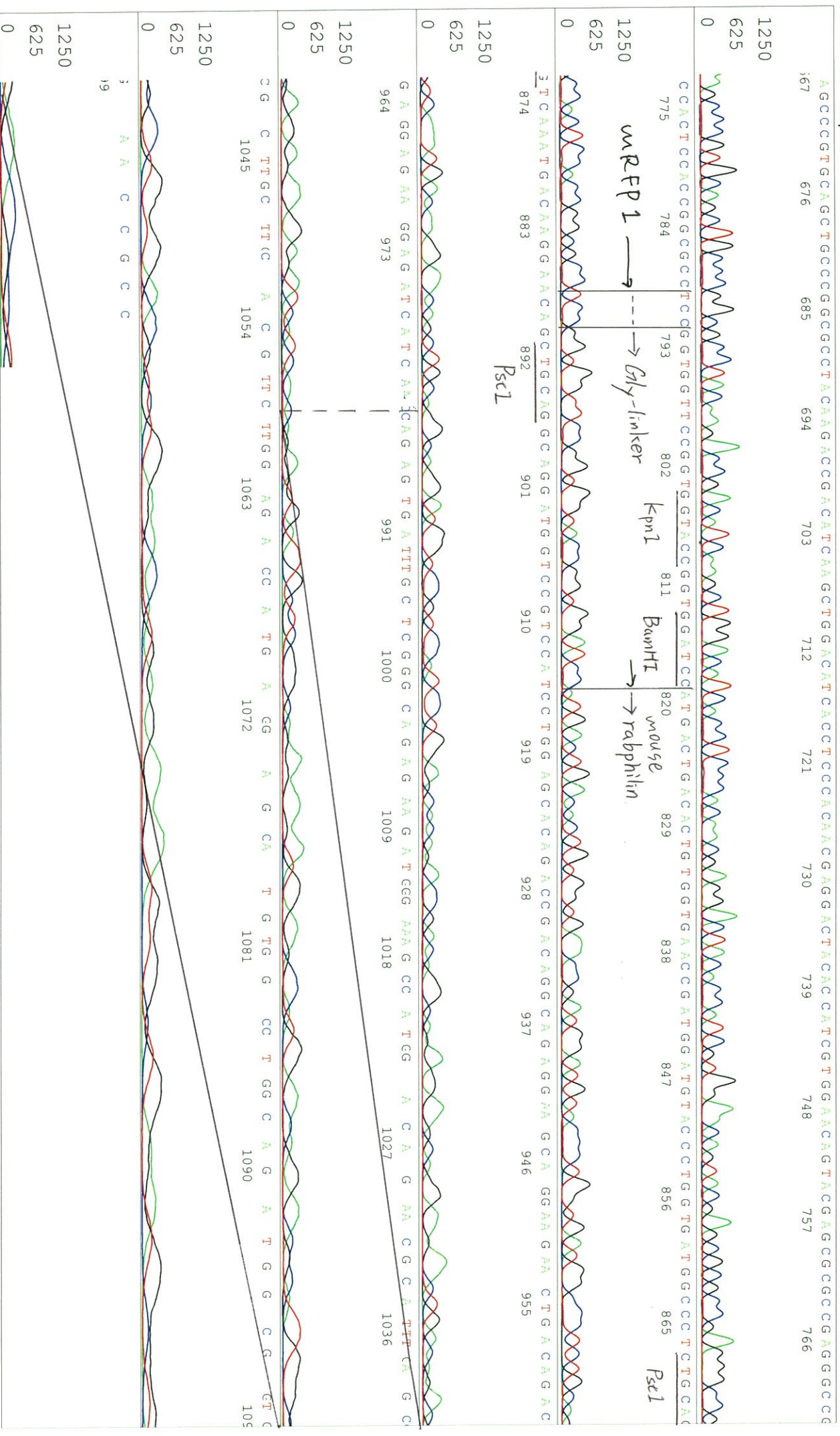
Pts 1532 to 12996 PK1 Loc:1509

Spacing: 11.46 Pts/Panel1350

Version 6.0 HISQV Bases: 962

Plate Name: 20170628 kitaku





S/N G:58 A:44 T:30 C:44 primer name B : mRFP1-C\_F

KB.bcp

KB 1.4.1.8 Cap:6

5'-ATGGCCAAGAGCCCGTGACAGC-3'

Nov 16,2017 11:19AM, JST  
Nov 16,2017 11:46AM, JST  
Spacing:1.58 Pts/Panel1350  
Plate Name: 20171116 Kitaku



S/N G:58 A:44 T:30 C:44

D04592A6\_A7F7\_2\_mRFP1-C\_F

Nov 16, 2017 11:19AM, JST

KB:bcp

KB\_3500\_POP7\_BDTV3.mob

Nov 16, 2017 11:46AM, JST

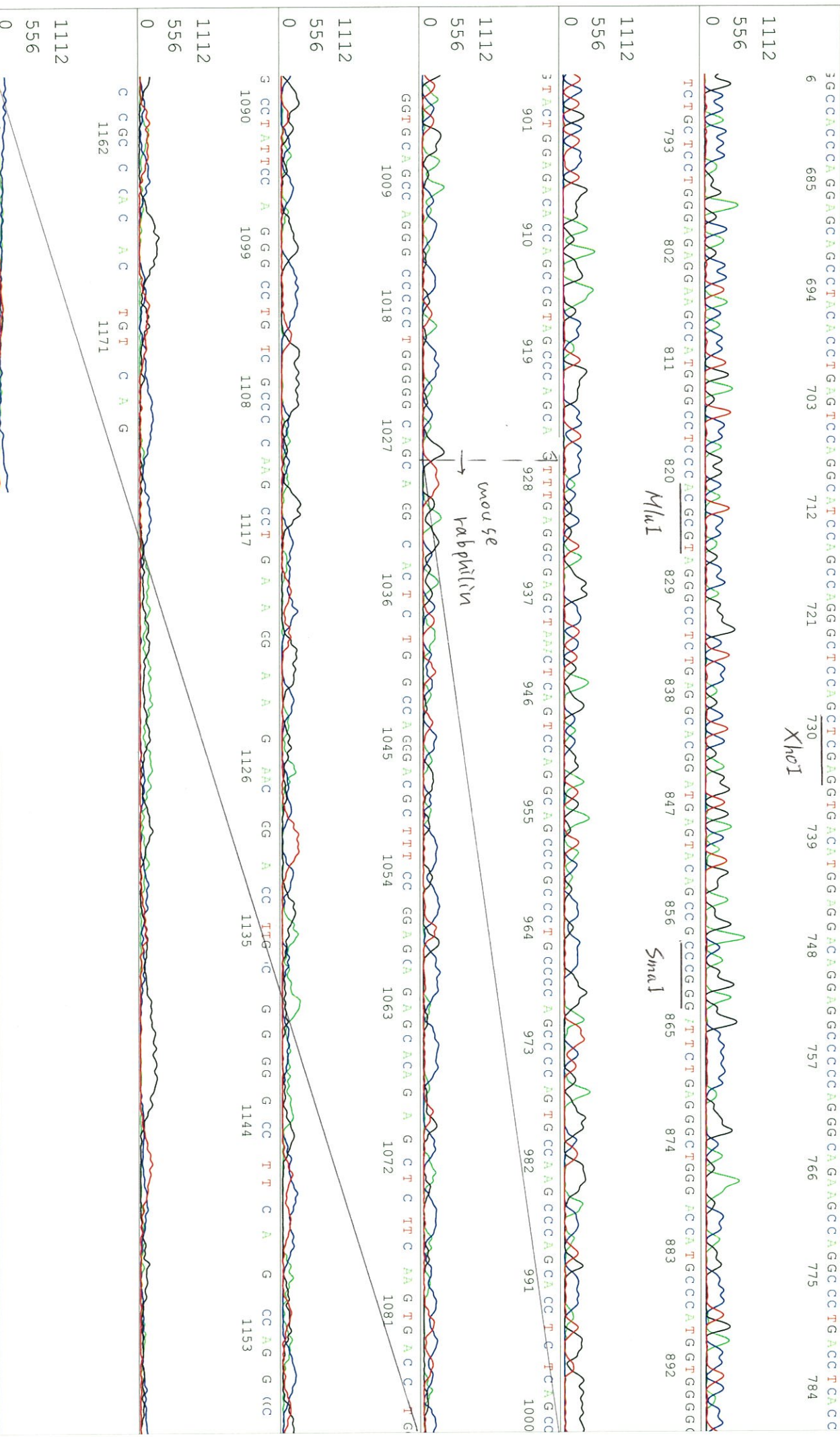
KB 1.4.1.8 Cap:6

Pls 1374 to 13117 PK1 Loc:1351

Spacing:1.58 Pls/Panel1350

Version 6.0 HISQV Bases: 1006

Plate Name: 20171116 Kitaku



S/N G:316 A:257 T:259 C:282 primer name C : SV40polyA-R

KB\_bcp KB\_3500\_POP7\_BDTV3.mob

Jun 28, 2017 12:01PM, JST

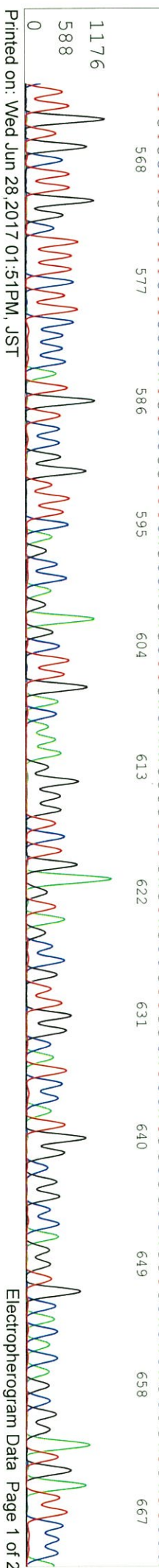
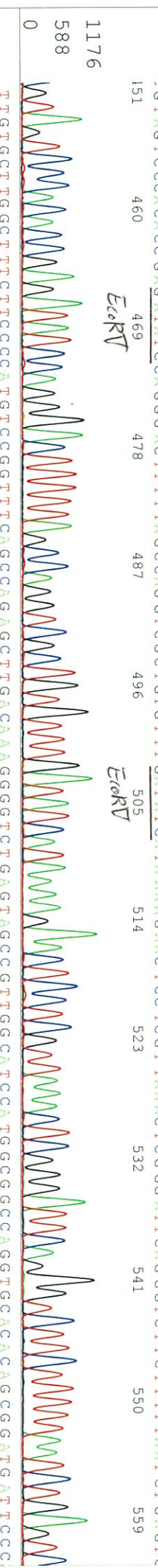
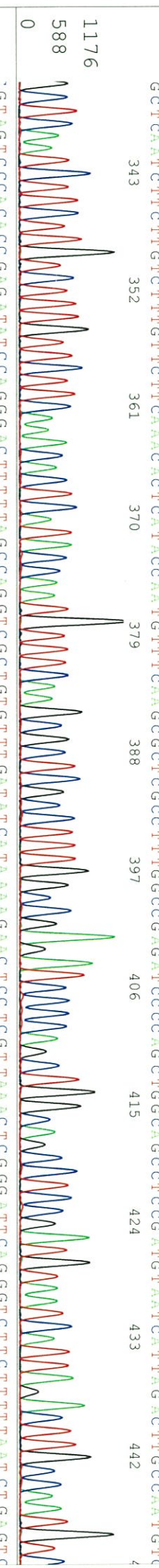
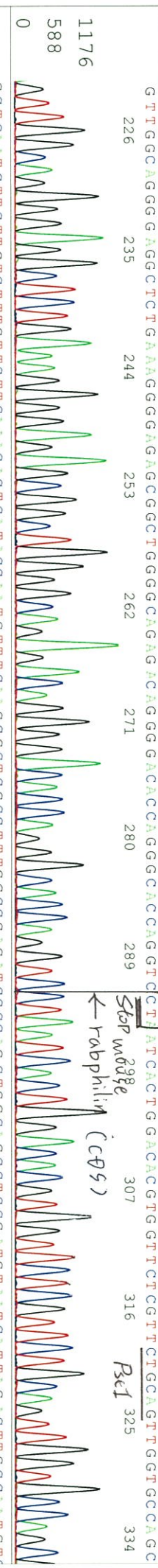
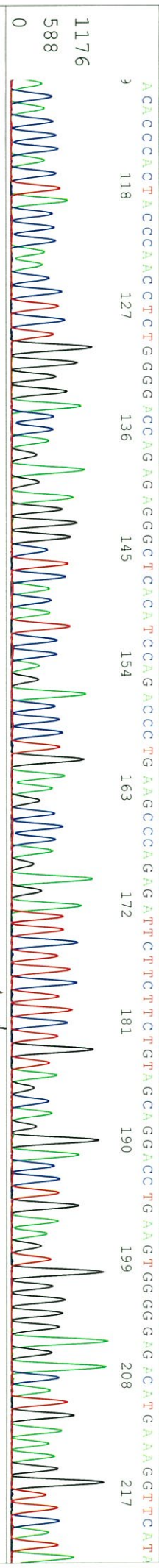
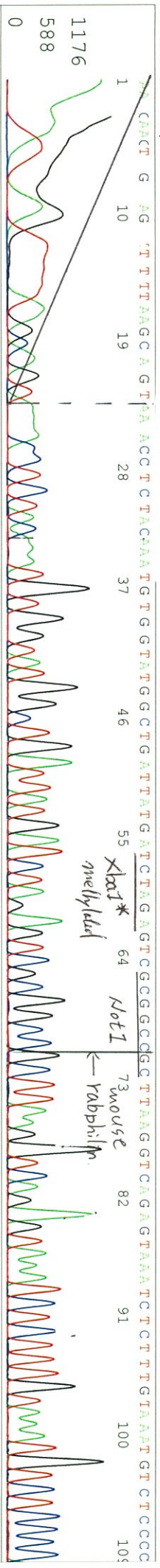
KB 1.4.1.8 Cap:15 5'-TCATTATGTTTCAGGTTTC-3'

Pts 1539 to 13010 Pk1 Loc:1516

Spacing:11.46 Pts/Panel1350

Version 6.0 HISQV Bases: 953

Plate Name: 20170628 Kitaku



S/N G:316 A:257 T:259 C:282

D04592A6\_A7F7\_2\_SV40polyA-R

Jun 28, 2017 11:34AM, JST

KB:bcp

KB\_3500\_POP7\_BDTV3.mob

Jun 28, 2017 12:01PM, JST

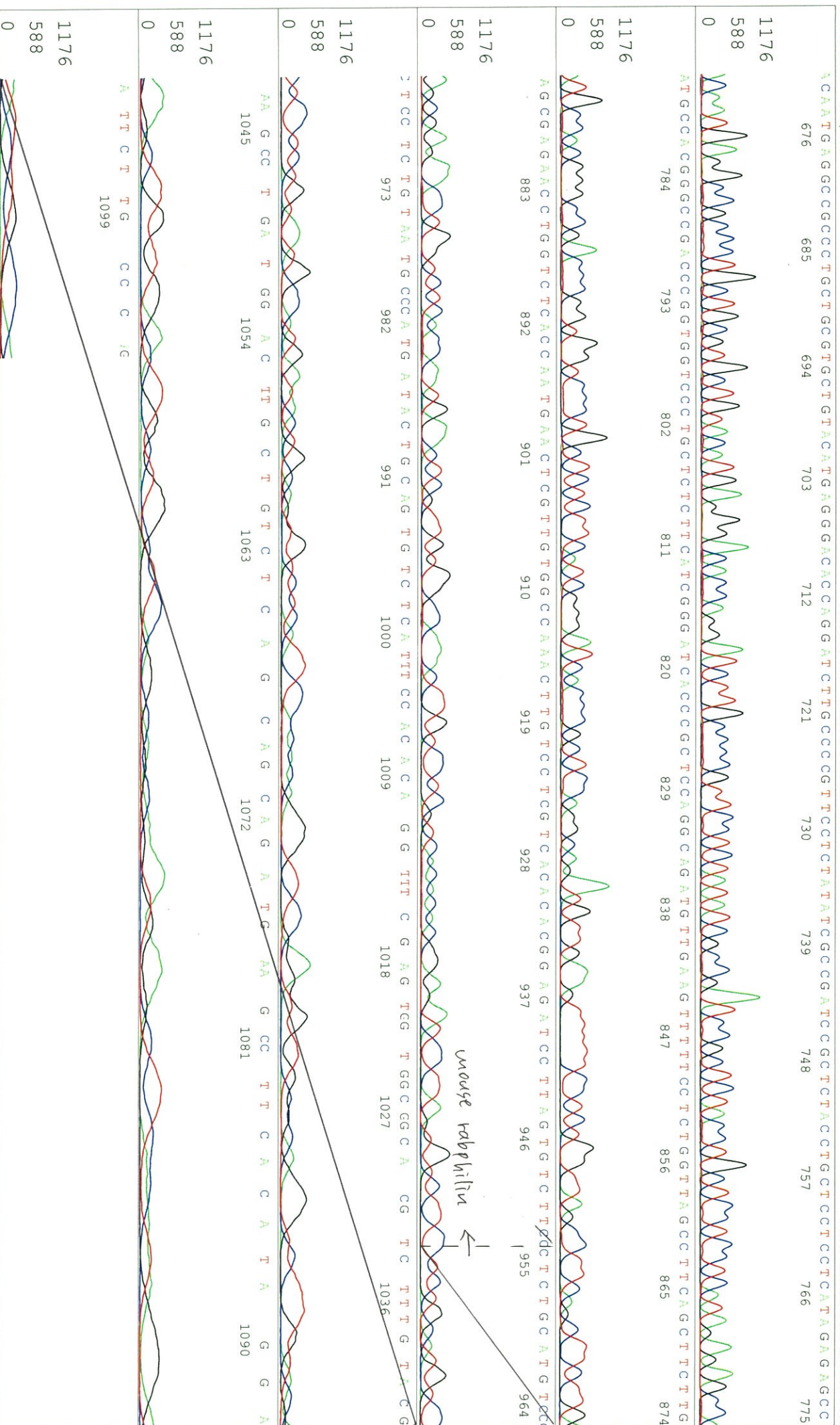
KB 1.4.1.8 Cap:15

Pts 1539 to 13010 Pk1 Loc: 1516

Spacing: 11.46 Pts/Panel1350

Version 6.0 HISQV Bases: 953

Plate Name: 20170628 kitaku



S/N G:335 A:256 T:244 C:295 primer name D : SV40pro\_F\_V2

KB: bcp KB\_3500\_POP7\_BDTV3.mob

Jun 28, 2017 12:01PM, JST

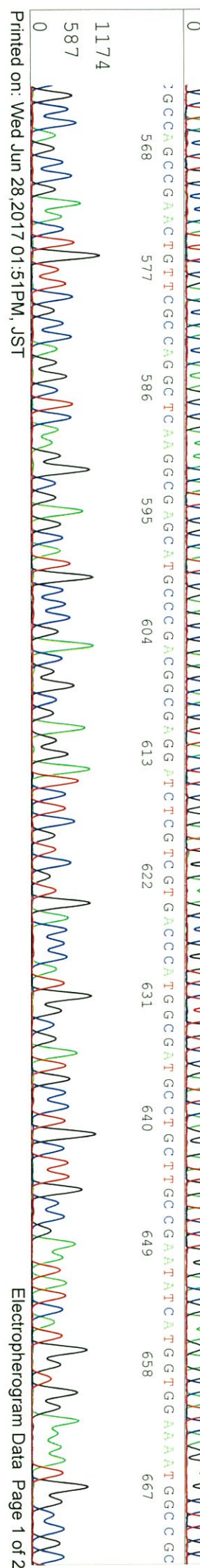
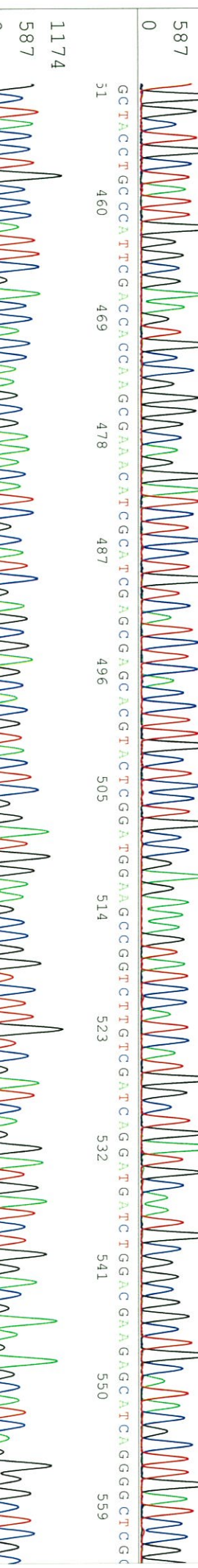
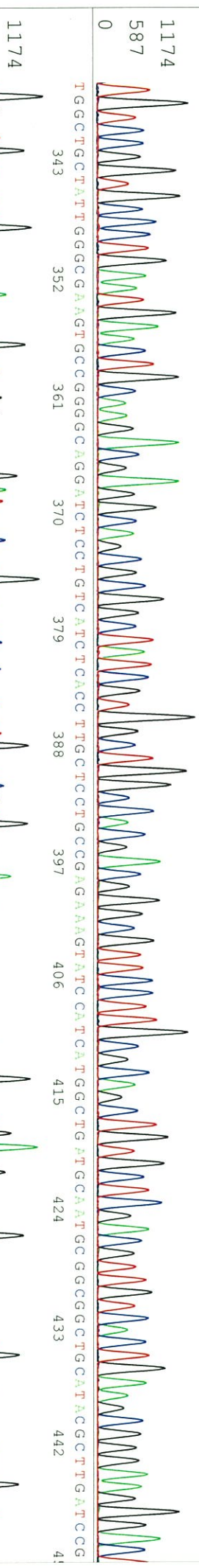
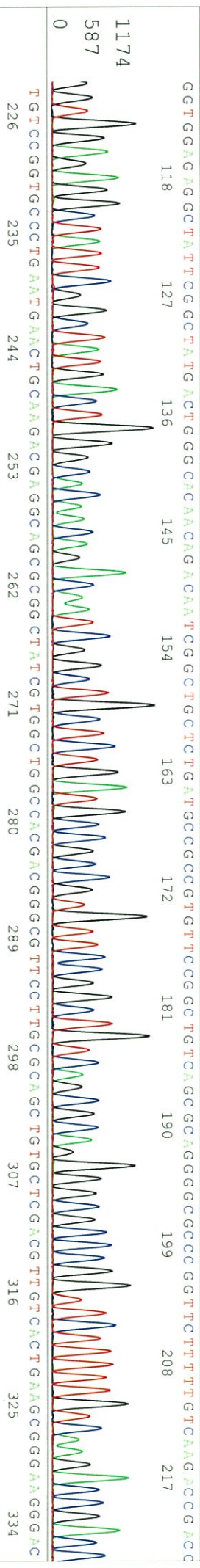
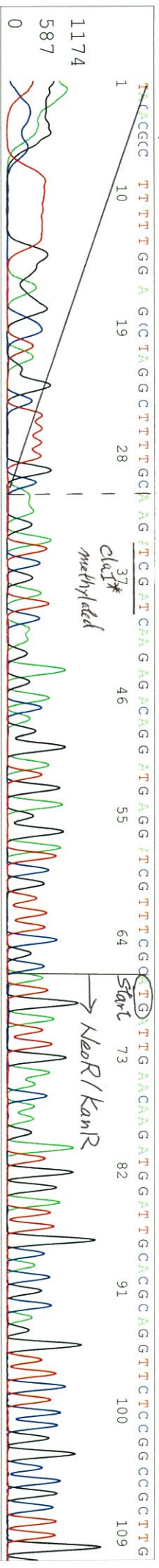
KB 1.4.1.8 Cap:18 5'-TCGGCCTCTGAGCTATTG-3'

Pis 1540 to 12967 Pk1 Loc:1517

Spacing:1:1.58 Pis/Panel1350

Version 6.0 HISQV Bases: 959

Plate Name: 20170628 kitaku





S/N G:335 A:256 T:244 C:295

D04592A6\_A7F7\_2\_SV40pro\_F\_V2

Jun 28, 2017 11:34AM, JST

KB:bcp

KB\_3500\_POP7\_BDTV3.mob

Jun 28, 2017 12:01PM, JST

KB 1.4.1.8 Cap:18

Pls 1540 to 12967 Pk1 Loc:1517

Spacing:11.58 Pls/Panel1350

T T T T C T G G A T T C A T C G A C T G T G C C C G G C T G G G T G T G C C G A C C G C T A T C C C G T G G C T A C C C C G T G A T T G C T G A A G A G C T T G C C G G A A T G G C C

