

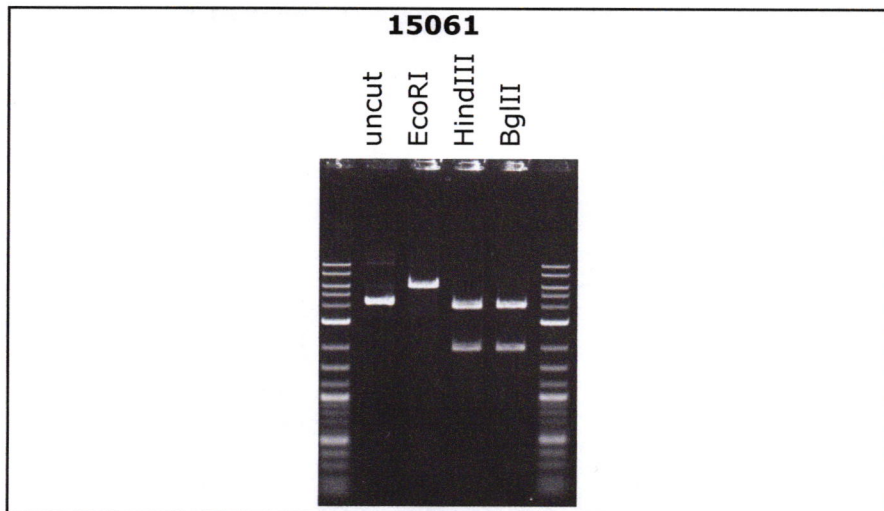
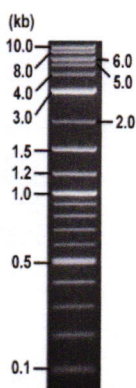


**RIKEN DNA BANK**

clone name : pK229.AAV-EF1alpha-EGFP-WPRE (Supernova)

- Clone ID : RDB \_ 15061
- Lot : 15061 \_ B2Ab
- DNA Concentration : 25 nanogram/microliter
- Volume : 40 microliter
- Form : DNA solution in TE buffer
- Host : NEB stable
- Culture : LB medium
- Antibiotics : 100 microgram/ml Ampicillin
- Purification : QIAGEN QIAprep Spin Miniprep kit
- Digestion by restriction enzyme

1 kb Plus DNA Ladder  
(NEB#N3200L),  
250 ng/well



Electrophoresis : 100 nanogram DNA per lane ; 1% agarose gel , 1 x TAE Buffer

Restriction enzyme	Expected size of fragment
<u>EcoRI</u>	<u>6.1</u> kbp
<u>HindIII</u>	<u>4.0, 2.0</u> kbp
<u>BgIII</u>	<u>4.1, 2.0</u> kbp
	kbp

● Confirmation of the insertion sequence

Please be sure to check our sequence analysis results before your request.

Sequence name	Primer ID	Primer name	Confirmed feature
Sequence - A	Pr0041	pAxEF_F1	EGFP 5'
Sequence - B	Pr0053	WPRE_R	WPRE,EGFP 3'
Sequence - C	Pr0024	EF1a-N_R	EF1 alpha pro,AAV ITR 1 3'
Sequence - D	Pr1113	hGH-pA_MF	hGH pA,AAV ITR 2 5'
Sequence - E	-	-	-
Sequence - F	-	-	-
Sequence - G	-	-	-
Sequence - H	-	-	-

APPROVED BY :

