

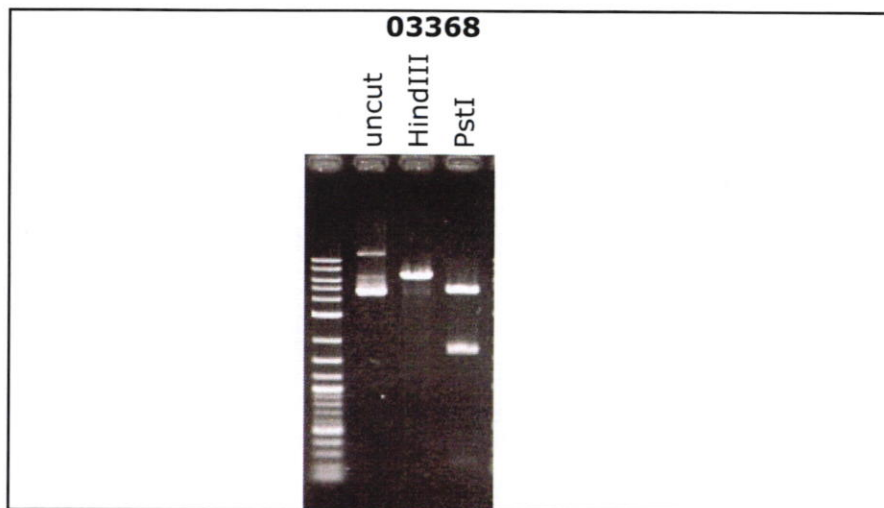
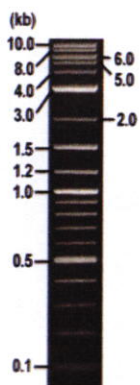


**RIKEN DNA BANK**

clone name : Human HLA-A\*01:01 cDNA

- Clone ID : RDB\_03368
- Lot : 14970\_A7E1
- DNA Concentration : 25 nanogram/microliter
- Volume : 40 microliter
- Form : DNA solution in TE buffer
- Host : DH5 alpha
- Culture : LB medium
- Antibiotics : 100 microgram/ml Ampicillin
- Purification : QIAGEN QIAprep Spin Miniprep kit
- Digestion by restriction enzyme

1 kb Plus DNA Ladder  
(NEB#N3200L),  
250 ng/well



Electrophoresis : 100 nanogram DNA per lane ; 1% agarose gel , 1 x TAE Buffer

Restriction enzyme	Expected size of fragment
<b>HindIII</b>	<b>6.5</b> kbp
<b>PstI</b>	<b>4.7, 1.7, 0.2</b> kbp
	kbp
	kbp

● Confirmation of the insertion sequence

Please be sure to check our sequence analysis results before your request.

Sequence name	Primer ID	Primer name	Confirmed feature
Sequence - A	Pr0016	CMV_Forward	CMV pro, insert 5'
Sequence - B	Pr0606	BGH_rev2	bGH pA, insert 3'
Sequence - C	Pr0731	SV40pro_ori_F	SV40 pro_ori, NeoR
Sequence - D	-	-	-
Sequence - E	-	-	-
Sequence - F	-	-	-
Sequence - G	-	-	-
Sequence - H	-	-	-

APPROVED BY :



S/N G:345 A:444 T:316 C:591

KB.bcp primer name A : CMV\_Forward

KB\_3500\_POP7\_BDIv3.mob

Jul 21, 2020 03:39PM, JST

KB 1.4.18 Cap:17

5'-GCACCAAAATCAACGGGACTT-3'

Pts 1495 to 11805 Pk1 Loc:1472

Jul 21, 2020 04:06PM, JST

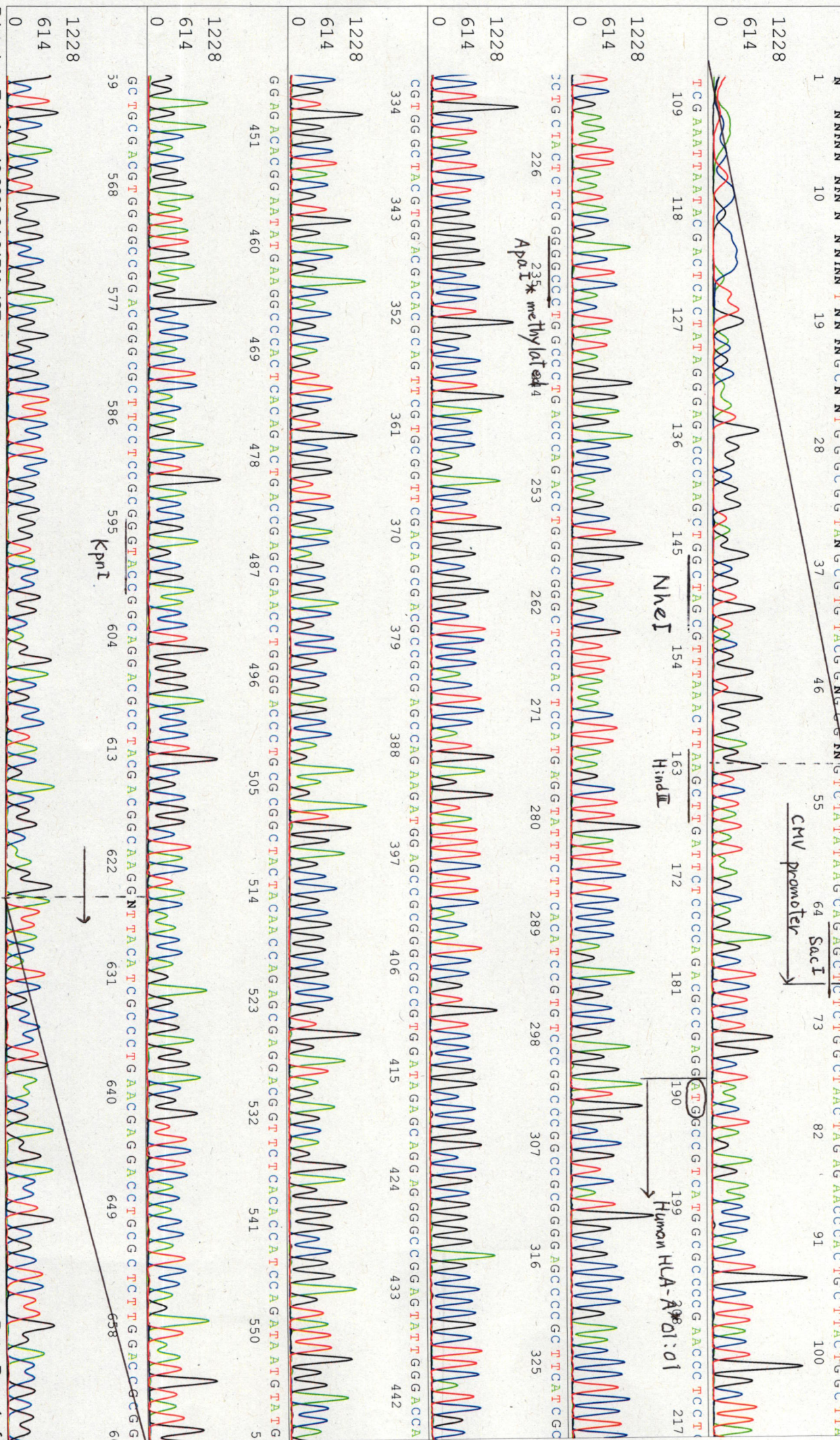
Version 6.0 HISQV Bases: 855

CMV promoter

NheI

HindIII

Human HLA-A\*01:01



S/N G:294 A:312 T:304 C:562 primer name B : BGH\_rev2

KB.bcp KB\_3500\_POP7\_BDTV3.mob

Jul 20, 2020 03:38PM, JST

KB 1.4.1.8 Cap:2 5' TATTAGGAAGGACAGTGGG-3'

Pls 1509 to 12027 Pk1 Loc:1486

Jul 20, 2020 04:05PM, JST

Version 6.0 HiSeq Bases: 818

Spacing: 10.64 Pst/Panel1350

Plate Name: 20200720\_dhbank



S/N:G.413.A:392.T:364.C:56 primer name C : SV40pro\_ori\_F

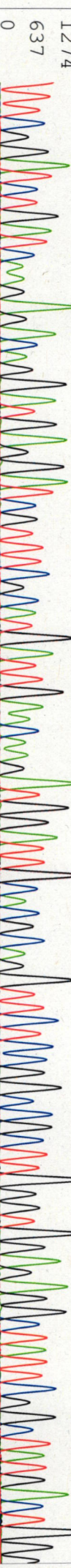
KB:bcp KB\_3500\_POP7\_BDTV3.mob Pts 1548 to 11788 Pk1 Loc:1525

KB 1.4.1.8 Cap:5 5'- TTCTCCGCCCCATGGCTGACTAAT -3' Version 6.0 HiSQV Bases: 830

1 NNN NNN NNN N N N N G C C C C C N C T G C C T C T G N N C T A T T C A N N G A A G T A G T G A G G A G G C T T T T T T T T T T G G A G C C C T A G G C C T T T T G C A A A A A G C T C C C G G G A G C T T T G T A T A T C C A T



TTTCGGATCTGATCAAGAGACAGGATGAGGATCGTTCCGCTTGAATTGAACAAGATGGATTGCACCGCAGGTTCTCCGGCCGGCTGGGTGAGAGAGCCATTTCGGCTATGACTGG



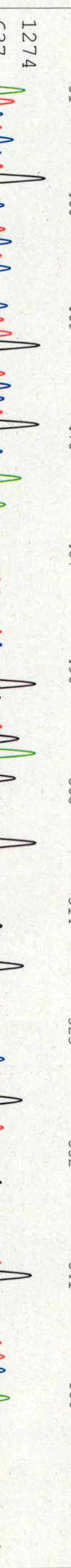
3CACACA GACAATCGGCTGCTCTGATGCCCGCCGTTGCCGGCTGTCA GCGCAGGGCCGCCGGTTCTTTTGTCAAGACCAGCTGTCCGGTGCCCTGAATGAAC TGACGAGCA



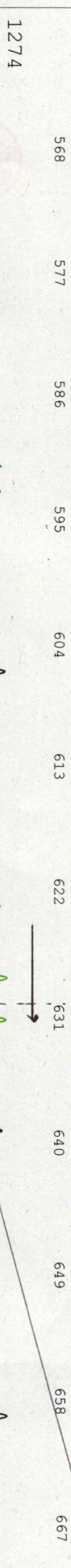
AGGCA GCGCGGCTATTCGTTGGTGGCCACGACGGCGGTTCCCTGGCCGACGCTGCTCGACCTGTCACCTGAAGCGGAAAGGACTGGCTTGGGCGAAGTCCCGGGCAGG



ATCTCCTGTATCTCA CCTTGCTCC TGGCCGAGAAAGTATCCATCA TGGGCTGATGCAATGCGGGCGCTGCATACCGCTTGATCCGGCTTACCTGCCATTGGAACCAAGCCGA



ACATCGCATTCGAGCGAGCAGCAGTACTCCGGATGGAAGCCGGCTCTTGTCGATCAGGATGATCTGGACGGAANAAGCATCAGGGGCTCCGCGCCAGCCGAACTGTTCCGCCAGG



0 637 1274

Printed on: Tue Jul 21, 2020 09:07AM, JST Electroherogram Data Page 1 of 2