

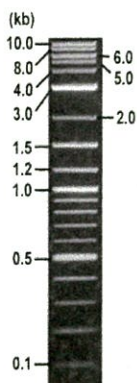


**RIKEN DNA BANK**

clone name : pGL4\_ifng-500-luc

- Clone ID : RDB \_ 14519
- Lot : 14519 \_ A6Lf
- DNA Concentration : 25 nanogram/microliter
- Volume : 40 microliter
- Form : DNA solution in TE buffer
- Host : DH5 alpha
- Culture : LB medium
- Antibiotics : 100 microgram/ml Ampicillin
- Purification : QIAGEN QIAprep Spin Miniprep kit
- Digestion by restriction enzyme

2-Log DNA Ladder  
(NEB#N3200L),  
125 ng/well



Electrophoresis : 100 nanogram DNA per lane ; 1% agarose gel , 1 x TAE Buffer

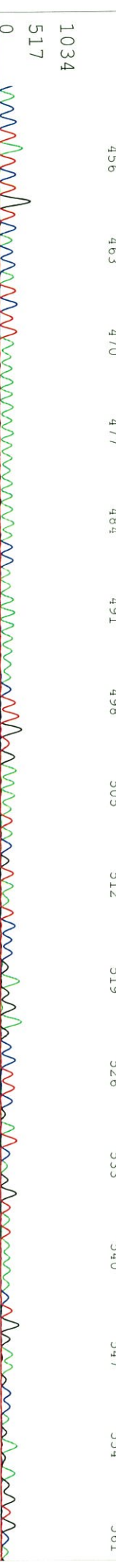
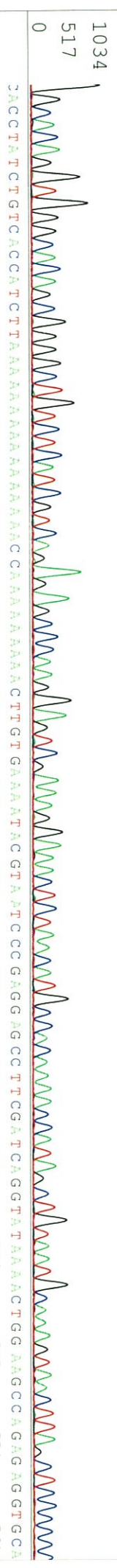
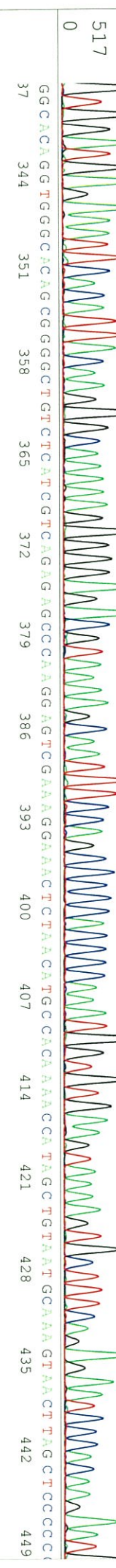
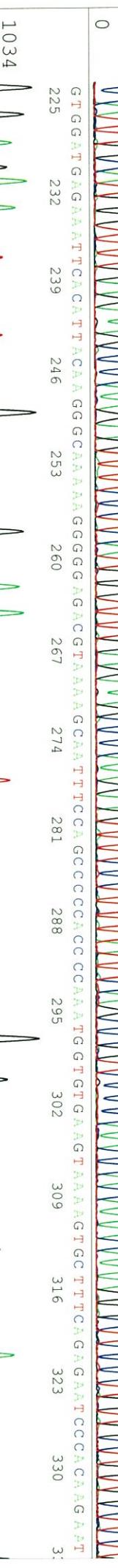
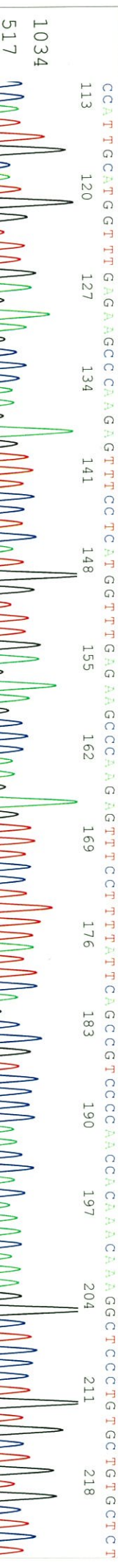
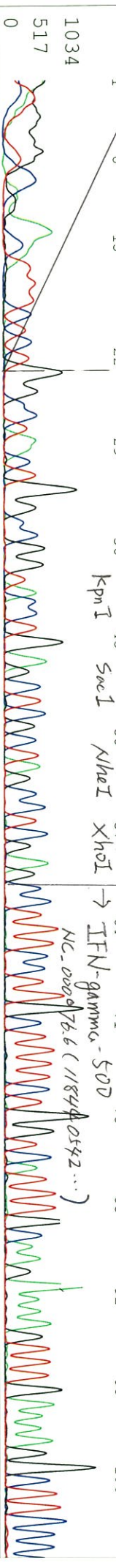
Restriction enzyme	Expected size of fragment
<u>HindIII</u>	<u>6.2</u> kbp
<u>PstI</u>	<u>3.7, 2.5</u> kbp

● Confirmation of the insertion sequence

Sequence name	Primer name	Sequence name	Primer name
Sequence - A	pGL4-4174F	Sequence - E	-
Sequence - B	SV40pro_R2	Sequence - F	-
Sequence - C	SV40pro_F	Sequence - G	-
Sequence - D	-	Sequence - H	-



APPROVED BY :





S/N G:26 A:32 T:36 C:33

D03972A5\_A6L1\_1\_pGL4-4174F  
 KB\_3500\_POP7\_BDTV3.mob

Dec 22, 2016 12:06PM, JST  
 Dec 22, 2016 12:32PM, JST

KB.bcp

Pts 1489 to 13031 PK1 Loc: 1466

Spacing: 11.83 Pts/Panel1350

KB 1.4.1.8 Cap:5

Version 6.0 HISQV Bases: 806

Plate Name: 20161222 kitaku

NC 000076.6  
 (C:118 (441,154))  
 1034 EcoRV BglII

517 0 → IFN-gamma-500

TCT ACC C A C T C G A A A A A C G G A C C C C C C G G C G / G C A G C T G C A C A A A G C C A T T G A A A G C E C C T A A C G C C C C T C G G T C C C G G G C A C C C A T C C

1034 517 0

785 792 799 806 813 820 827 834 841 848 855 862 869

678 680 687 694 701 708 715 722 729 736 743 750 757 764 771 778

1034 517 0

1034 517 0

1034 517 0

1034 517 0

1034 517 0

1034 517 0

1034 517 0

1034 517 0

1034 517 0

1034 517 0

S/N G:45 A:37 T:35 C:48

KB:bcp

KB\_3500\_POP7\_BDTV3.mob

Jul 26, 2019 02:09PM, JST

KB 1.4.1.8 Cap:21

5'-GACCTTCCACACACCTGTTGC-3'

Pts 1387 to 12702 PK1 Loc:1364

Jul 26, 2019 02:36PM, JST

AGTCTGCCCCATTGCAATCTTC TGCCTGCTGGGG/GCCTGGGGGACTTTCACACCCCTAACTGACACCACTTCACAGCTGGTTCTTCCGGCCTCAGAAAGGTAGCTAACCAAGT

SV40 pro/ori



BawHI ClaI

TCC TCTTTCA GAG GTTATTTCA GGGCCA TGG TGC TGGCGGCA GATCA GCGG GAA GAGCGGCC CCAATA CGGCA AACGGAT CCTTATCGATT TTTACCA CATTGTTA GAGGTTT TACTTGC

SV40 p(LA)

TTTAAAAAACC TCCCA CACCTCCCCCTGAAACCTGAAAACA TAAATA TGAATGCAA TTTGTTGTTAACTGTTTATTGGCAGCTTATTAATGGTTA CAAATAAAGCAA TAGCATCA C

SV40 p(LA)

AAATTT CACA AATAAAGCATTTT TTTCACTGCATTTCTAGTTGTGGTTC CAAACTCATCAATGTATCTTATTCATGTCTGCTCGAA GCGCGCCGCCCGA CTCTAGACT

XbaI

3CAGTTTAGACGTTGATCCTGCGCTGGCGCAAGCA GCAAGGTTCTATCCATGCGCGCTCCTGGGCGCAGCTCATGGGCA GGGTGCCTGCTCCTGCTCCCTCACCTCGG

PstI

hPEST

AGGGAAGCCGCTGGCC TGTTAAGGTGGATCA CAAAGTGGCTTAA GCTTGAACCA GTTCTTGC AAAGCA AATTCA CGGCGGATCTTGC CGCCCTTCTTGGCC TTAATGAG AATC

hCLL

Luciferase













SN G:108 A:87 T:66 C:100

D03972A5\_A6Lf\_1\_SV40pro\_F

Jan 10,2017 02:39PM, JST

KB.bcp

KB\_3500\_POP7\_BDTV3.mob

Jan 10,2017 03:05PM, JST

KB 1.4.1.8 Cap:2

Pls 1341 to 13785 PK1 Loc:1318  
Version 6.0 HISQV Bases: 1042

Spacing:12.25 Pls/Panel1350  
Plate Name: 20170110 Kitaku

