

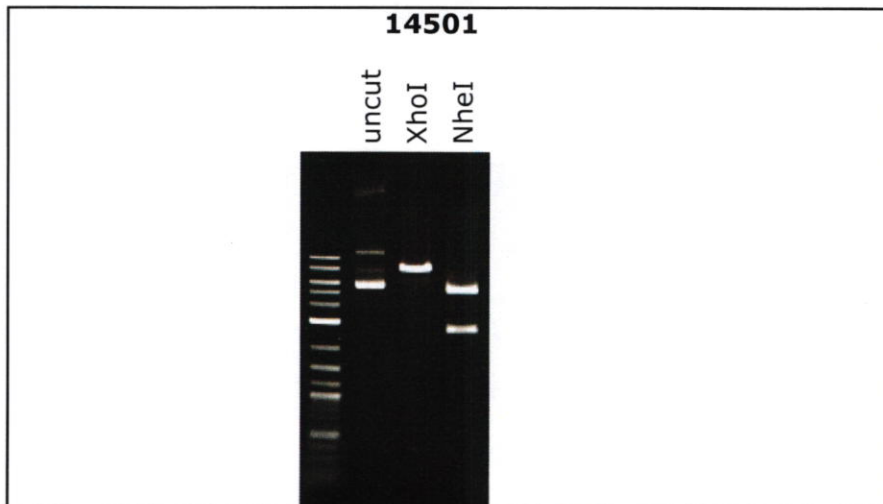
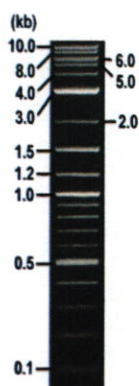


**RIKEN DNA BANK**

clone name : **pMXs-IRES-GFP\_IgM**

- Clone ID : RDB \_ 14501
- Lot : 14501 \_ A6Le
- DNA Concentration : 25 nanogram/microliter
- Volume : 40 microliter
- Form : DNA solution in TE buffer
- Host : DH5 alpha
- Culture : LB medium
- Antibiotics : 100 microgram/ml Ampicillin
- Purification : QIAGEN QIAprep Spin Miniprep kit
- Digestion by restriction enzyme

1 kb Plus DNA Ladder  
(NEB#N3200L),  
250 ng/well



Electrophoresis : 100 nanogram DNA per lane ; 1% agarose gel , 1 x TAE Buffer

Restriction enzyme	Expected size of fragment
<b>XhoI</b>	<b>7.8</b> kbp
<b>NheI</b>	<b>5.2, 2.6</b> kbp
	kbp
	kbp

● Confirmation of the insertion sequence

Please be sure to check our sequence analysis results before your request.

Sequence name	Primer ID	Primer name	Confirmed feature
Sequence - A	Pr0061	pBABE5'	pol region, insert 5'
Sequence - B	Pr0037	IRES-R	IRES, insert 3'
Sequence - C	Pr0036	IRES-F	IRES, EGFP
Sequence - D	Pr0008	Amp_R	AmpR pro, 5'LTR, MMLV psi
Sequence - E	Pr0108	SV40pA3'Element Reverse	3'LTR
Sequence - F	-	-	-
Sequence - G	-	-	-
Sequence - H	-	-	-

APPROVED BY :





primer name A : PBABE5'

5'-CTTATCCAGCCCTCAGC-3'

D04073A1\_A6Le\_1\_PBABE5'\_A04\_01\_AB124

D04073A1\_A6Le\_1\_PBABE5'

KB\_3500\_POP7\_BDTV3.mob

Pls 1559 to 13396 Pk1 Loc:1536

Version 6.0 HISQV Bases: 971

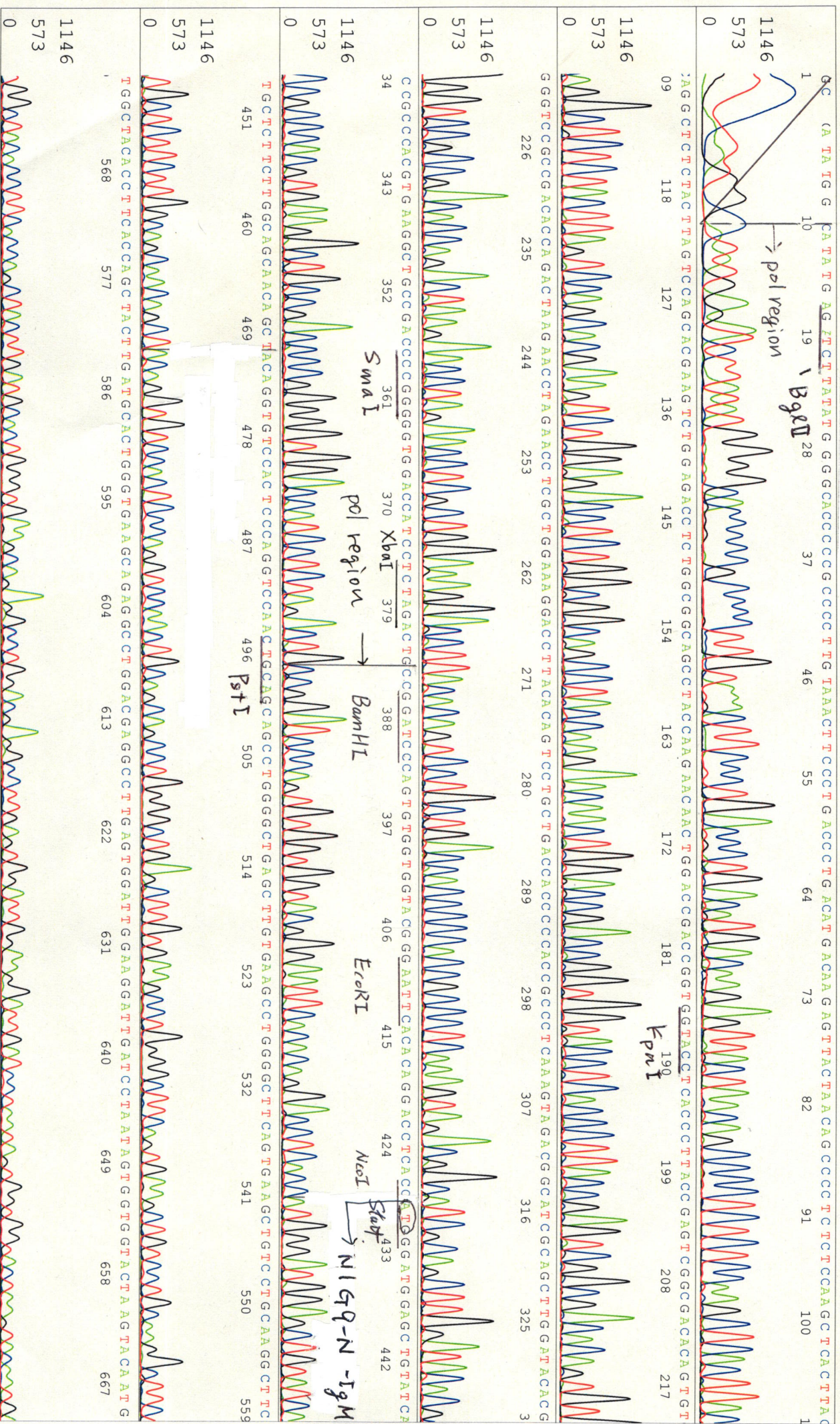
Inst Model/Name 3500/3500 Instrument

Dec 22, 2016 10:37AM, JST

Dec 22, 2016 11:03AM, JST

Spacing:1.95 Pts/Panel1350

Plate Name: 20161222 kitaku





AGAAAGTTCCAAGAGCAAGAGCCACCACTGACGTAGACCAAAACCCTCCAGCCAGCCCTGACCACTTAGAGACTCTGCGGCTCTATATTGTGCA

1146  
573

AGATATGATTACTACGGGTAGTAACTACTTGTGACTTACGGGGCCCAAGGCCACTCTCCAGAGTAGTCAAGTCCCTCCCAAATGCTTCCCTCCCTCGTC

1146  
573

TCTGGCGAGAGCCCCCTGTCTGTGATTAAGAACTCTGGCCCATGGGGCTGGCCCTGGCCCGGGACTTCTCCCTGCCCAAGTCTTCTCAAGCTGGAA

1146  
573

CTAACAGAA CAA CAC TGAAG TCA TCC AG EGG TATCA GAA CCC TTTCC CAA CACC TGA GA CCA GGG G C A G TACC TAG CC AA

1146  
573

TCGC CAA GTGA TGG C T C C T A G A G CC A T C C AA GA T C A G A TGG A G TT A C C TG

1146  
573

GG G AT TG CCG A

1146  
573

N169-V-IgM

XhoI



S/N G:498 A:544 T:362 C:401

primer name B : IRES-R

D04073A1\_A6Le\_1\_IRES-R

Jan 25, 2017 09:37AM, JST

KB.bcp

KB\_3500\_POP7\_BDTV3.mob

Jan 25, 2017 10:09AM, JST

KB 1.4.1.8 Cap:2

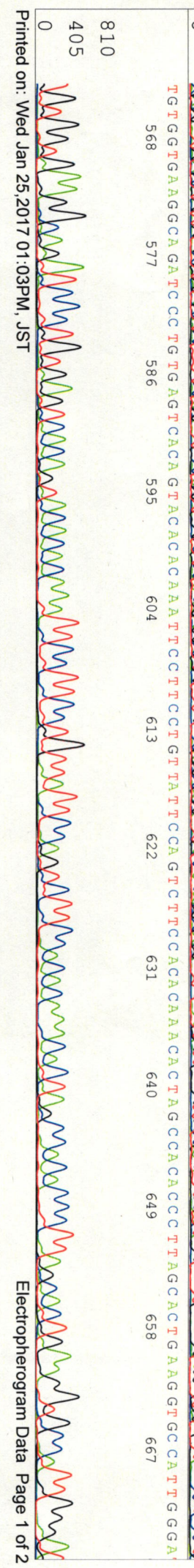
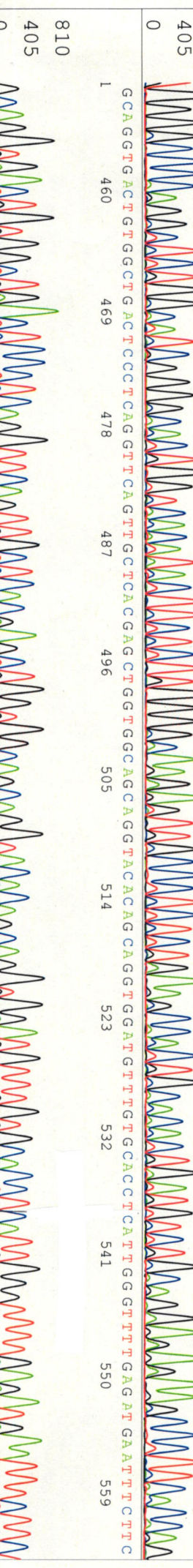
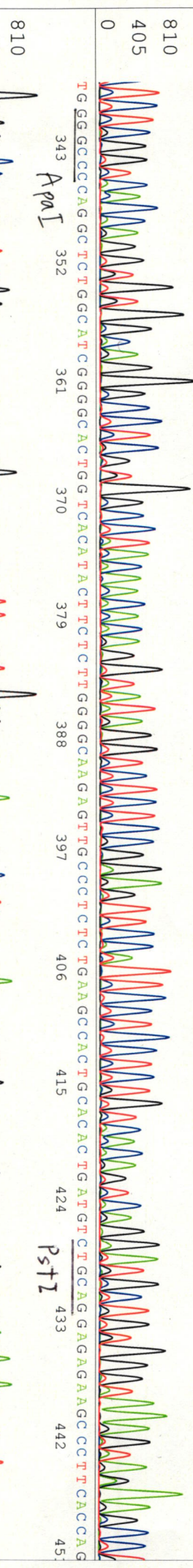
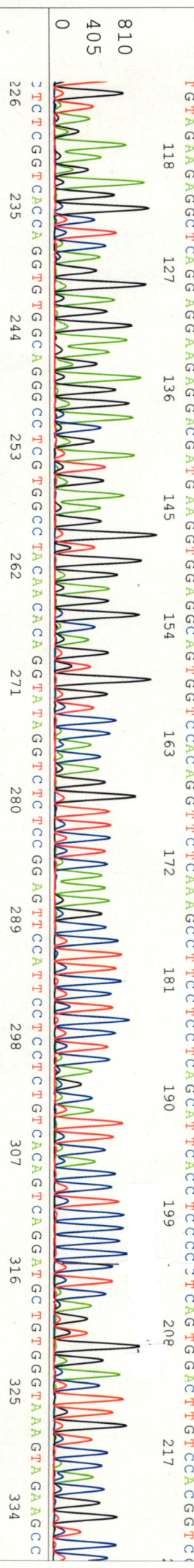
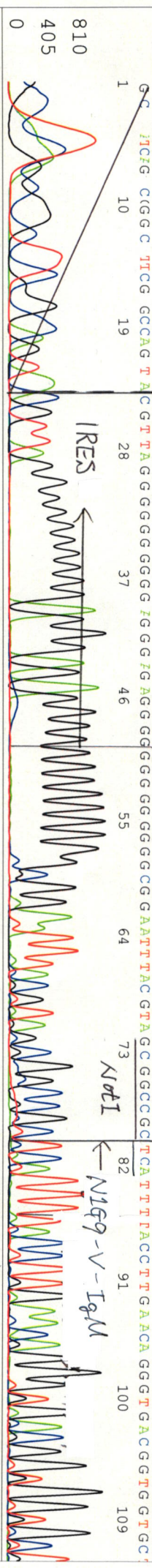
5'-ACATATAGACAAACGCACACCC-3'

Pis 1509 to 13930 Pk1 Loc: 1486

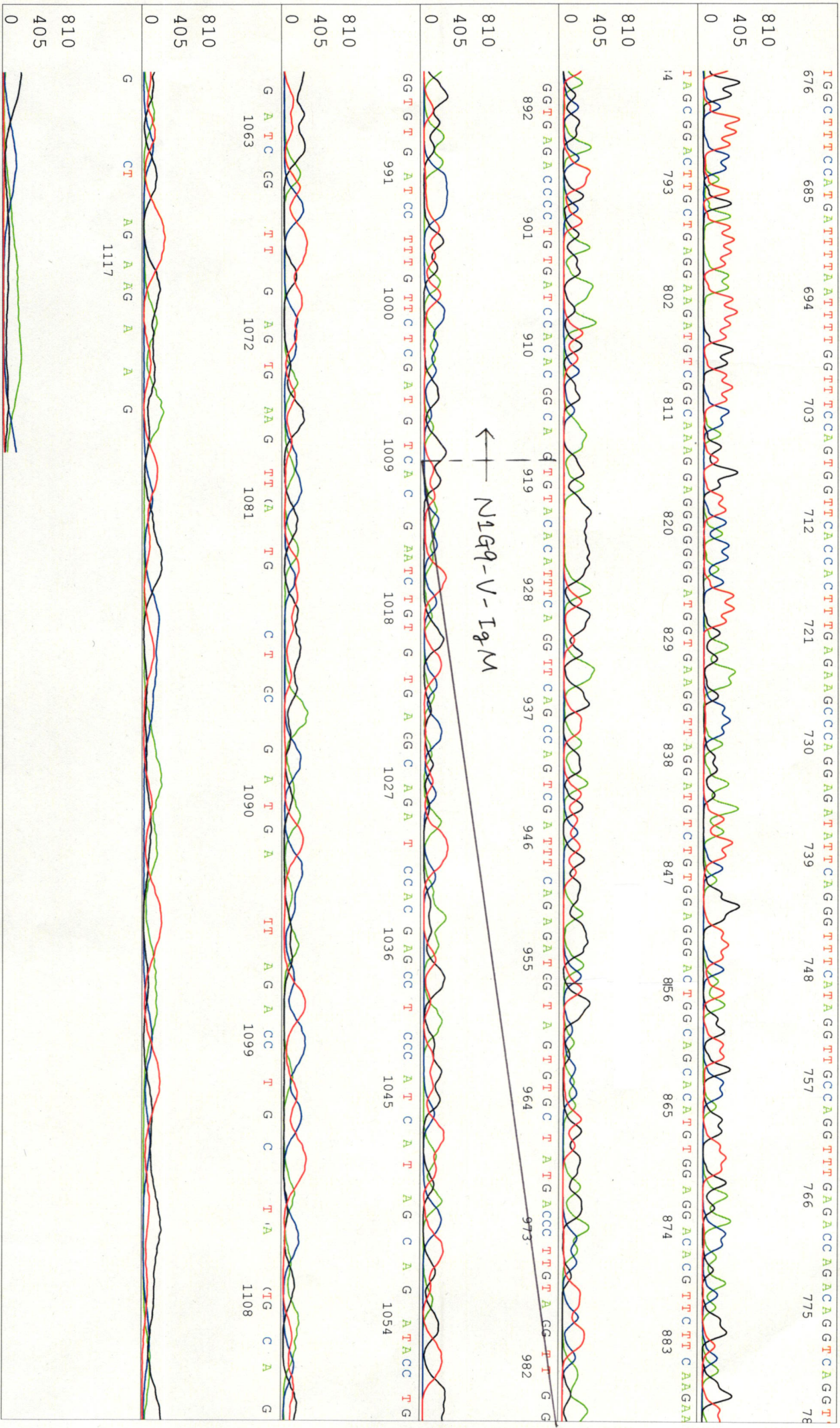
Spacing: 12.69 Pts/Panel/350

Version 6.0 HISQV Bases: 926

Plate Name: 20170125 kitaku









S/N G:235 A:218 T:142 C:246

primer name C : IRES-F

KB\_3500\_POP7\_BDTV3.mob

Dec 22, 2016 10:37AM, JST

KB 1.4.1.8 Cap:7

5'-TTGTATGGGATCTGATCTGG-3'

Pts 1577 to 13242 Pk1 Loc:1554

Dec 22, 2016 11:03AM, JST

Version 6.0 HiSeq Bases: 982

Pls 1577 to 13242 Pk1 Loc:1554

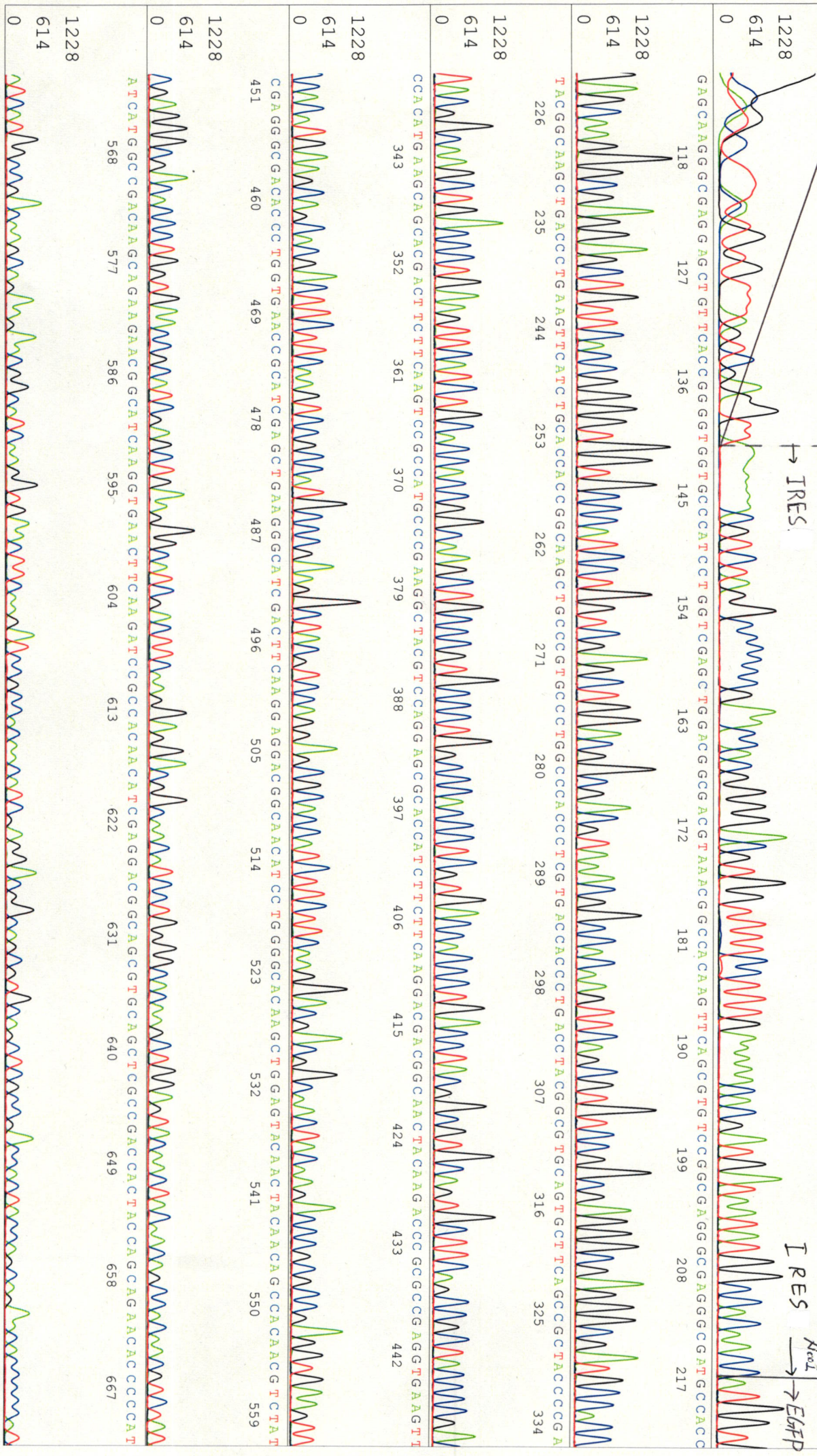
Spacing:1.86 Pts/Panel1350

KB 1.4.1.8 Cap:7

5'-TTGTATGGGATCTGATCTGG-3'

Version 6.0 HiSeq Bases: 982

Plate Name: 20161222 Kitaku





S/N G:235 A:218 T:142 C:246

D04073A1\_A6Le\_1\_IRES-F  
KB\_3500\_POP7\_BDTV3.mob

Dec 22, 2016 10:37AM, JST

KB.bcp

Pls 1577 to 13242 Pk1 Loc:1554

Dec 22, 2016 11:03AM, JST

KB 1.4.1.8 Cap:7

Version 6.0 HiSQV Bases: 982

Spacing: 11.86 Pts/Panel1350  
Plate Name: 20161222 kitaku

CGGCGACGGCCCGCCGCTGCTGCTGCCCCAACAACCCTAACCCTGAGCAACCAGTCCGCCCTGAGCAAAAGACCCCAACGAGAAAGCCGATCACATGGCTCTGGAGGTTCC

G T G A C C G C C C C G C C G G G A T C A C T C T C G G C A T G G A C G A G C T G T A C C A A G T A A A G C C G G C C G G C C G C C A G C A C A G T G G T C C G A C G A T A A A A T A A A A G A T T T A T T A G

EGFP →

T C T C C A G A A A A A G G G G G G A A T G A A A A G A C C C C A C C T G T A E G T T T G G C A A G C C T A G C T T A A G T T A A G T A A C G C C A T T T T G C A A A E G C A T E G G A A A A A T A C A T T

Khe2

A A A C T G A G A A T A G G A G A A G T T T C A G G A T C A A A G G T C A T G A A C A G A T G G G A A C A G C T G A A T A T G G G C C A A A C A G G A T A T A T C T G T

G G T A A G C A G T T T C C T G C C C C G C T C A G T A G A G A C A G A C A G A T G G A A C A G C T G G A A C A G C T G A A G G A T A T A T C T G T

A A T G G G G G C C C C A

1228  
614  
0



S/N G:145 A:137 T:112 C:132

primer name **D**: Amp\_R

D04073A1\_A6Le\_1\_Amp\_R  
KB\_3500\_POP7\_BDTV3.mob

Dec 22, 2016 10:37AM, JST

KB.bcp

KB 1.4.1.8 Cap:10

5'-GGCAGCACCGGAAATGTTGAATA-3'

Pis 1567 to 13284 Pk1 Loc:1544  
Version 6.0 HISQV Bases: 978

Dec 22, 2016 11:03AM, JST  
Spacing: 11.95 Pts/Panel1350  
Plate Name: 20161222 Kitaku





S/N G:145 A:137 T:112 C:132

D04073A1\_A6Le\_1\_Amp\_R

Dec 22, 2016 10:37AM, JST

KB.bcp

KB\_3500\_POP7\_BDTV3.mob

Dec 22, 2016 11:03AM, JST

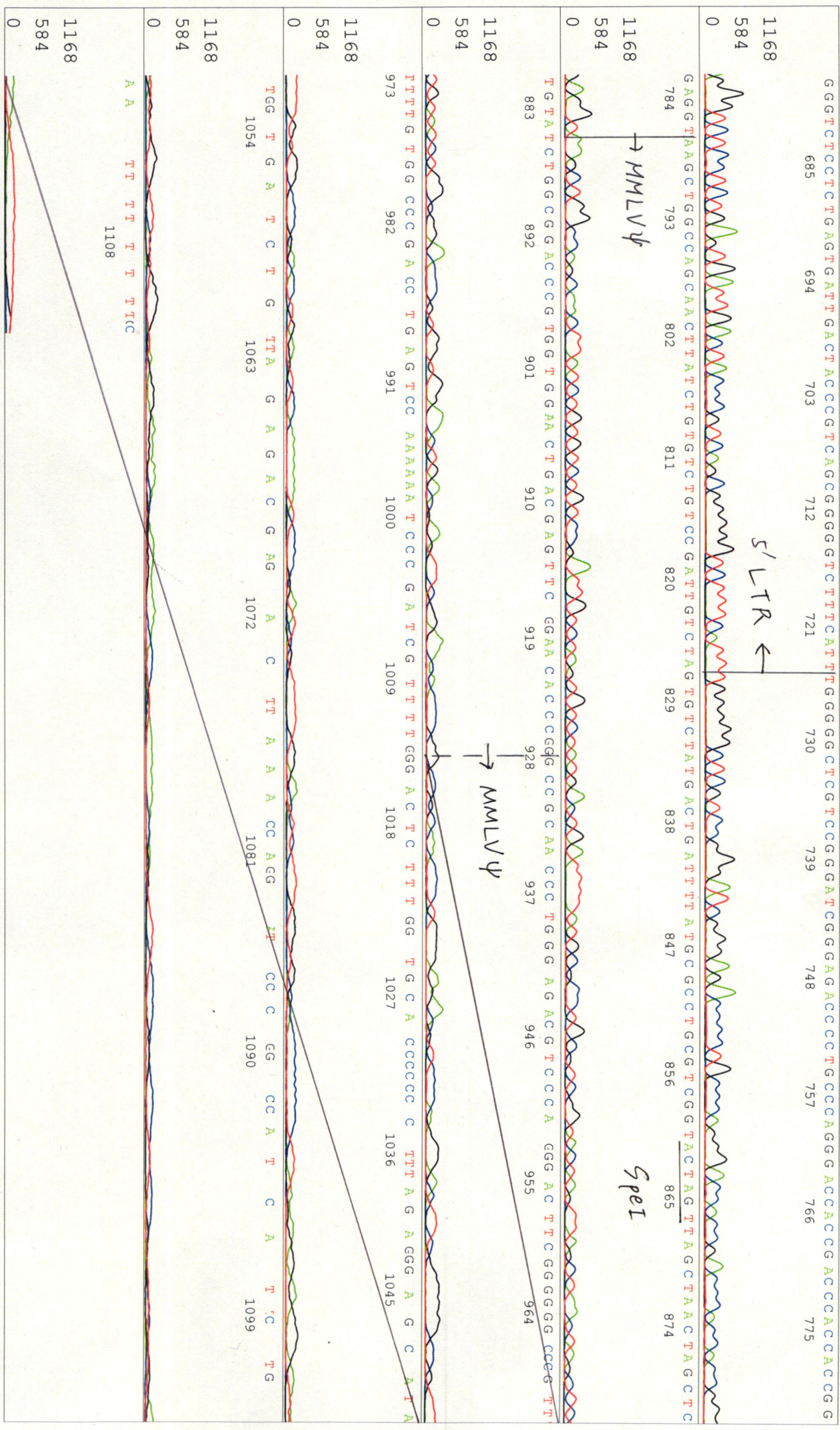
KB 1.4.1.8 Cap:10

Pis 1567 to 13284 Pk1 Loc:1544

Spacing:1.95 Pts/Panel1350

Version 6.0 HiSQV Bases: 978

Plate Name: 20161222 kitaku





S/N G:398 A:349 T:252 C:378

KB.bcp primer name E : SV40pA3element Reverse

KB\_3500\_POP7\_BDTV3.mob

Dec 22, 2016 11:03AM, JST

KB 1.4.1.8 Cap:13

5'-CTCTGACTTGAGCGTCGATTT-3'

Pts 1571 to 13303 Pk1 Loc:1548

Version 6.0 HISQV Bases: 966

Plate Name: 20161222 Kitaku





S/N G:135 A:114 T:105 C:125

D04073A6\_A6Le\_1\_SV40pA3element Reverse

Dec 22, 2016 12:40PM, JST

KB.bcp

KB\_3500\_POP7\_BDIV3.mob

Dec 22, 2016 01:07PM, JST

KB 1.4.1.8 Cap:15

Pls 1528 to 13027 Pk1 Loc:1505

Spacing: 11.64 Pts/Panel1350

CGGGGCGAGAACCTGGCTTACCACAGATTATCCCTGGTTGGCCCATATTCAAGCTGGTTCATCTGTCTTGCGCCCTGAGCCGGGGGCAAGCTGCCTTACCACAGATTATCC

EcoRV

EcoRV

1260

630



3'LTR ←

1260

630



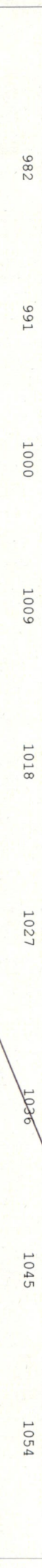
1260

630



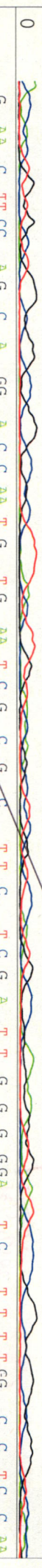
1260

630



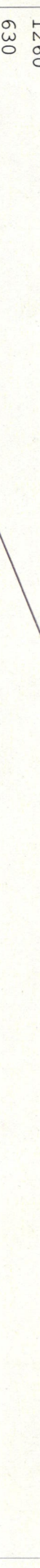
1260

630



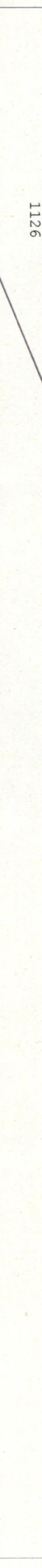
1260

630



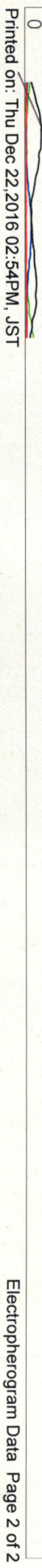
1260

630



1260

630



Printed on: Thu Dec 22, 2016 02:54PM, JST