

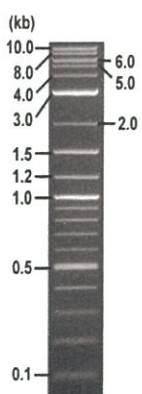


**RIKEN DNA BANK**

clone name : pDUAL2-GFH1

- Clone ID : RDB \_ 06202
- Lot : 14464 \_ A6L7
- DNA Concentration : 25 nanogram/microliter
- Volume : 40 microliter
- Form : DNA solution in TE buffer
- Host : DH5 alpha
- Culture : LB medium
- Antibiotics : 100 microgram/ml Ampicillin
- Purification : QIAGEN QIAprep Spin Miniprep kit
- Digestion by restriction enzyme

2-Log DNA Ladder  
(NEB#N3200L),  
125 ng/well



Electrophoresis : 100 nanogram DNA per lane ; 1% agarose gel , 1 x TAE Buffer

Restriction enzyme	Expected size of fragment
<u>Sall</u>	<u>9.1</u> kbp
<u>EcoRI</u>	<u>9.1</u> kbp
<u>Sall + EcoRI</u>	<u>6.1, 3.0</u> kbp
	kbp
	kbp

● Confirmation of the insertion sequence

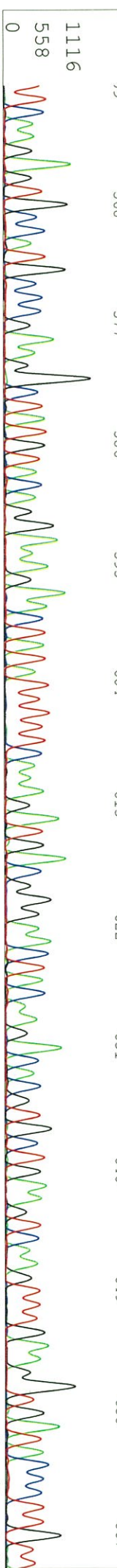
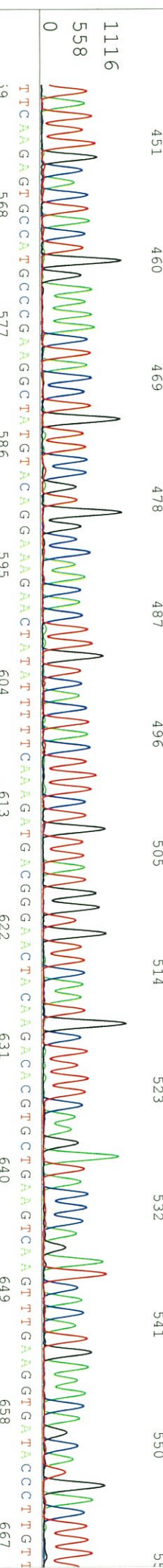
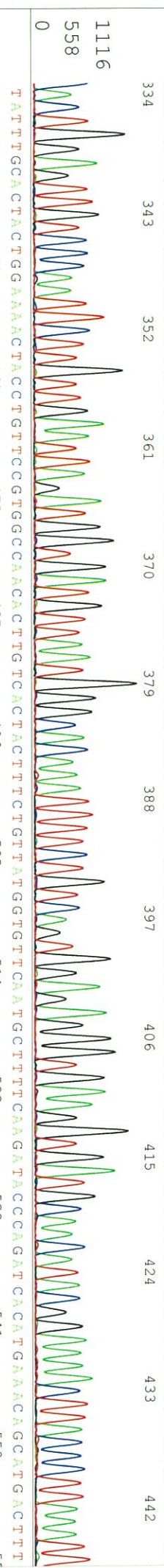
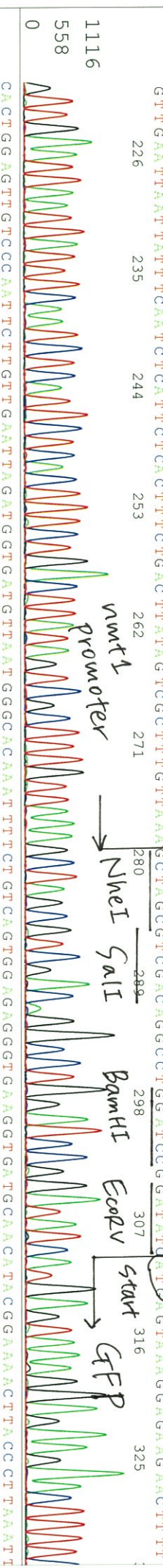
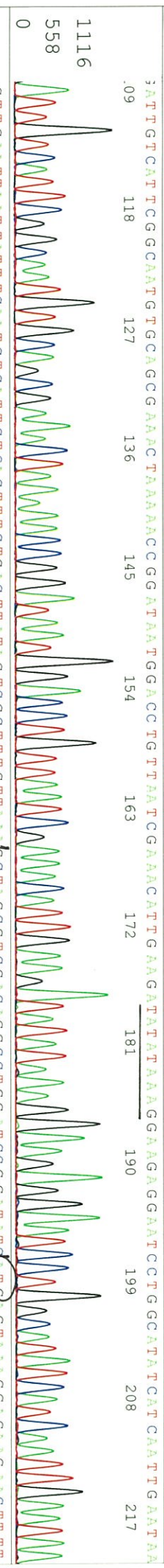
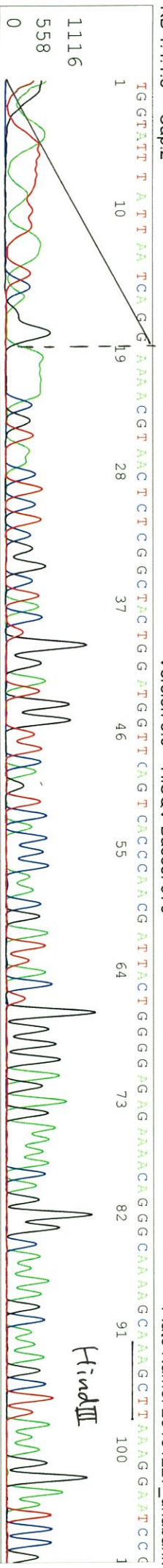
Sequence name	Primer name	Sequence name	Primer name
Sequence - A	nmt1Fw	Sequence - E	Reverse2
Sequence - B	ADH_rev	Sequence - F	-
Sequence - C	ADH-Forward	Sequence - G	-
Sequence - D	f1ori_R3	Sequence - H	-

APPROVED BY :



S/N G:138 A:210 T:193 C:157 primer name A : nm1Fw  
KB:bcpc 5'- GCTGTA AAAACACCACGAGAGAC -3'  
KB 1.4.1.8 Cap:2

06202\_14464\_A6L7\_nm1Fw  
KB\_3500\_POP7\_BDTV3.mob  
Pis 1529 to 13273 Pk1 Loc:1506  
Version 6.0 HiSQV Bases: 970





S/N G:138 A:210 T:193 C:157

06202\_14464\_A6L7\_nmt1Fw

Dec 27, 2016 11:38AM, JST

KB.bcp

KB\_3500\_POP7\_BDTV3.mob

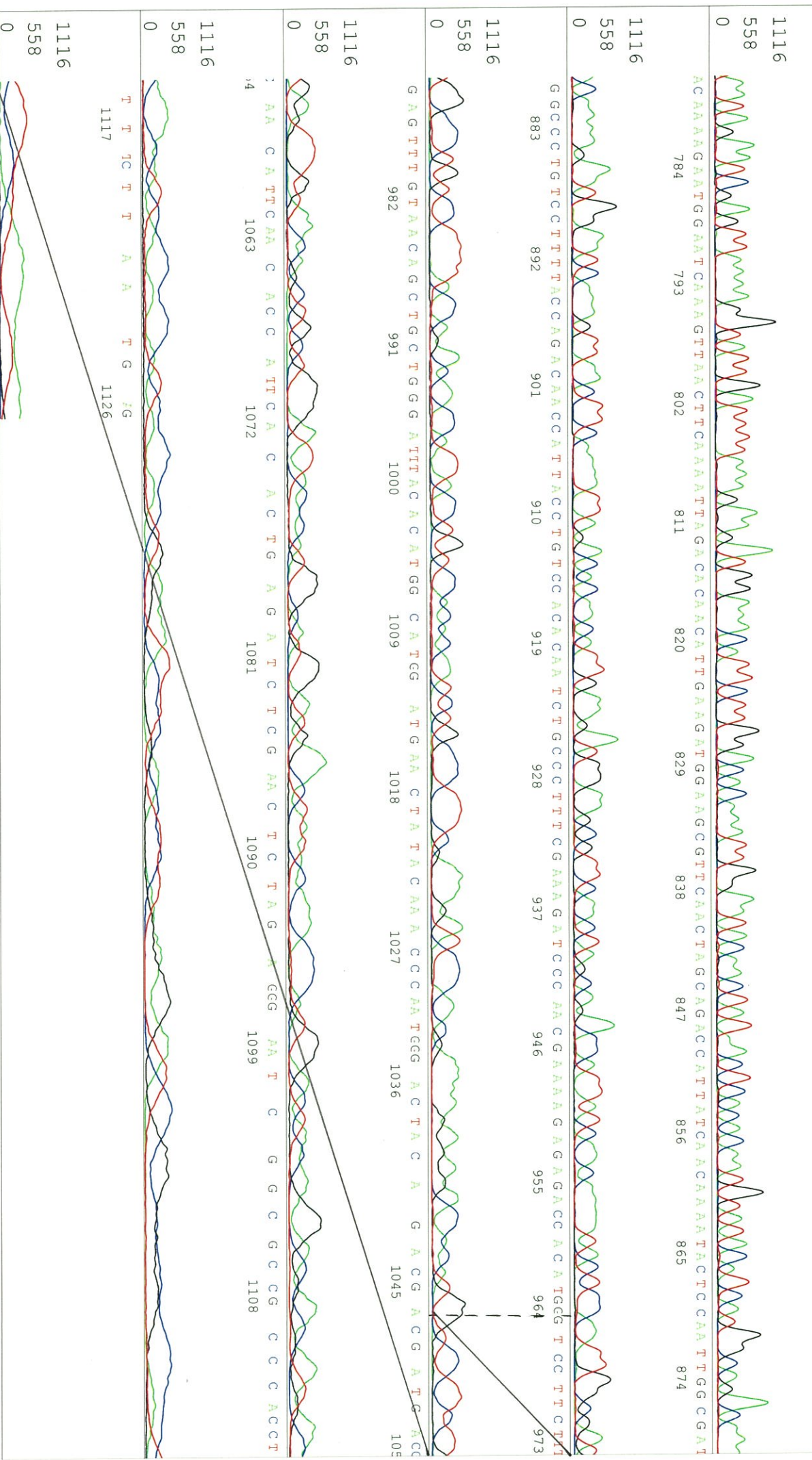
Dec 27, 2016 12:04PM, JST

KB 1.4.1.8 Cap.2

Pls 1529 to 13273 PK1 Loc:1506

Spacing: 11.92 Pls/Panel1350

Version 6.0 HiSQV Bases: 970









ACTCTTGA AAAAGTCA TGC TGT TTT CCA TGT GAT CTGGG TATCTTGA AAAAGCATTGA AACACCA TAAACA GAAA GTAGTGA CCAAGTGTGGCCACCGGAACAGGTAA GTTTT

775 784 793 802 811 820 829 838 847 856 865

TTCAA GTAGTGC AAA TAAAT TTTAAA GGGTA AG TTTTCCG TATGTG TGCAT CACCTTCA CCGCTCTCCACTGACAGAAAATTTGTGCCCATTTAA CATCCCA TCT

874 883 892 901 910 919 928 937 946 955 964

TTCAA GTAGTGC AAA TAAAT TTTAAA GGGTA AG TTTTCCG TATGTG TGCAT CACCTTCA CCGCTCTCCACTGACAGAAAATTTGTGCCCATTTAA CATCCCA TCT

973 982 991 1000 1009 1018 1027 1036

AAAA GCGACTAT AA GT CAG AA A GTG AG A TGG A G A TT G AAAA TA A TTT AA TTCC AA C TTA T C A T G A TGG AAT A TGG CC

1045 1054 1063 1072 1081 1090

GG AA T C C T C T C C C T T A TAG AT CC TT CC A TG AT T C G G A T AA CC A GG T C C A T T A

1020 510 0

T C C G G G T

1099



S/N G:257 A:321 T:347 C:253

primer name C : ADH-Forward

KB\_3500\_POP7\_BDTV3.mob

Dec 27, 2016 12:04PM, JST

KB.bcp

5'-GTCAGGTTGCTTCTCAGGATAG-3'

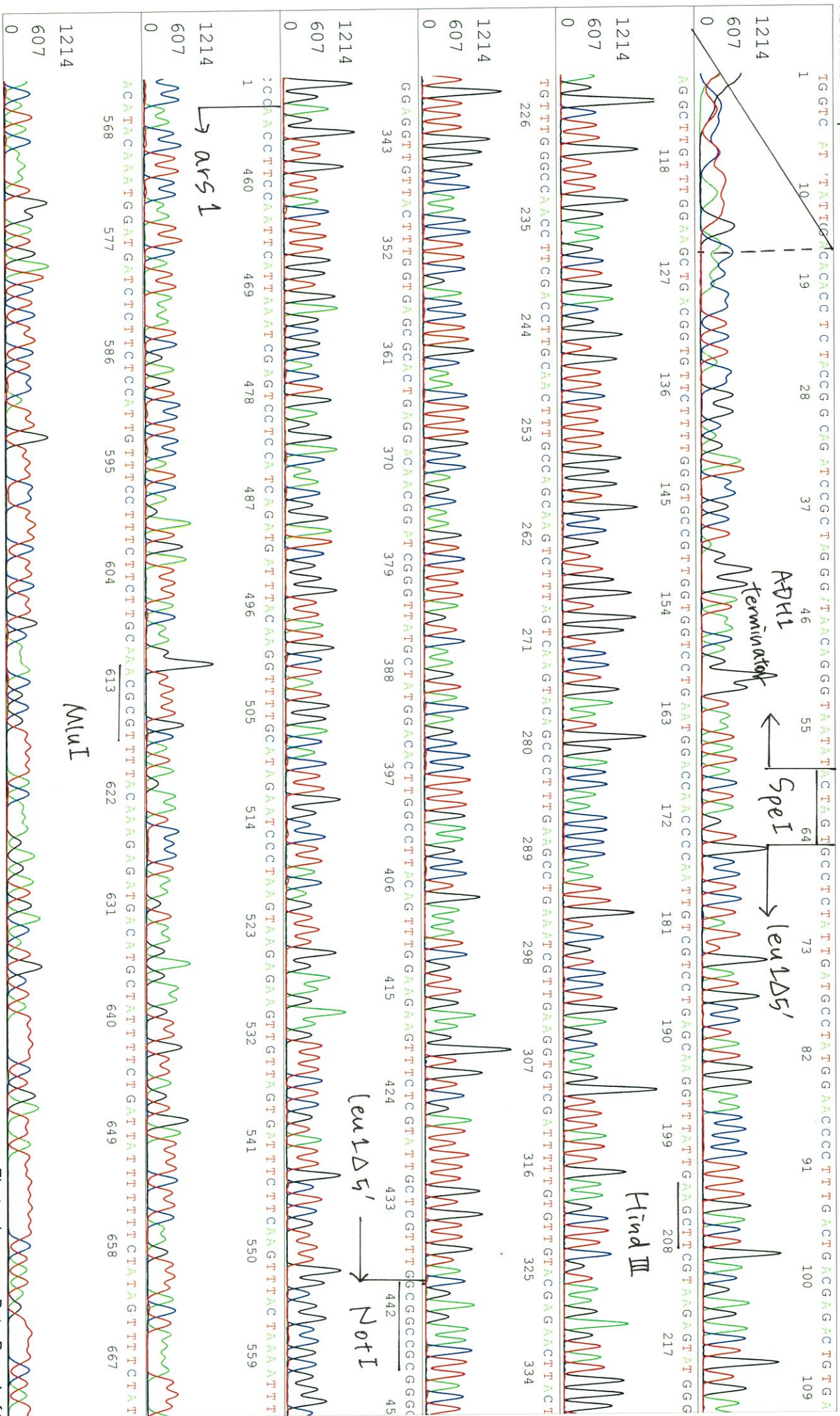
Pts 1652 to 13165 Pk1 Loc:1629

Spacing:11.9 Pts/Panel1350

KB 1.4.1.8 Cap:8

Version 6.0 HiSeqV Bases: 864

Plate Name: 20161227\_dnabank









S/N G:276 A:365 T:305 C:303

primer name : f1ori\_R3

KB\_3500\_POP7\_BDTV3.mob

Pts 1653 to 12963 PK1 Loc:1630

Version 6.0 HiSQV Bases: 837

KB.bcp

KB 1.4.1.8

Cap:11

5'-TTAATGCCGCCCTACAGGGC-3'

