

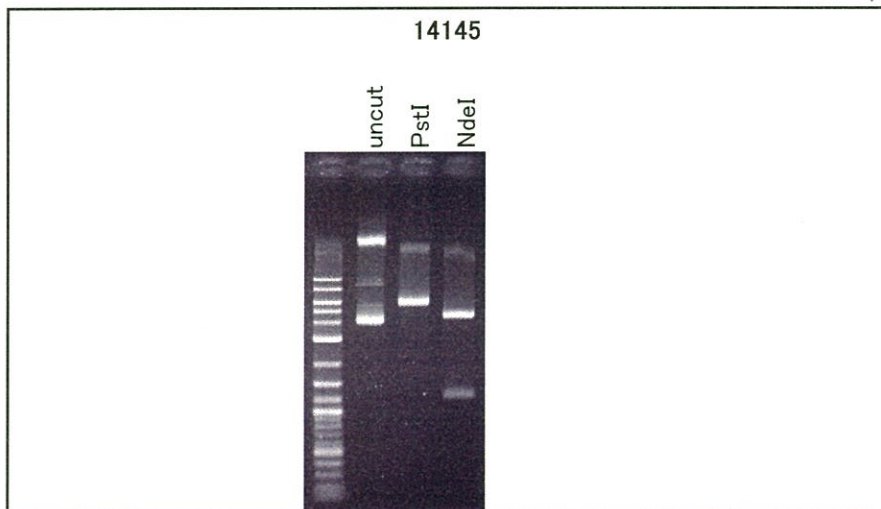
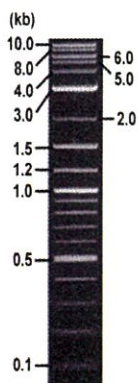


RIKEN DNA BANK

clone name : pCMV-TUBA1A myc-R64W

- Clone ID : RDB_14145
- Lot : 14145_A6Dp
- DNA Concentration : 25 nanogram/microliter
- Volume : 40 microliter
- Form : DNA solution in TE buffer
- Host : DH5 alpha
- Culture : LB medium
- Antibiotics : 25 microgram/ml kanamycin
- Purification : QIAGEN QIAprep Spin Miniprep kit
- Digestion by restriction enzyme

2-Log DNA Ladder
(NEB#N3200L),
125 ng/well



Electrophoresis : 100 nanogram DNA per lane ; 1% agarose gel , 1 x TAE Buffer

Restriction enzyme	Expected size of fragment
<u>PstI</u>	<u>5.7</u> kbp
<u>NdeI</u>	<u>4.4, 1.2</u> kbp
_____	_____ kbp
_____	_____ kbp
_____	_____ kbp

● Confirmation of the insertion sequence

Sequence name	Primer name	Sequence name	Primer name
Sequence - A	CMV-Forward	Sequence - E	-
Sequence - B	T7_20bp	Sequence - F	-
Sequence - C	SV40pro_F_V2	Sequence - G	-
Sequence - D	-	Sequence - H	-



APPROVED BY :



S/N G:1230 A:1485 T:1201 C:1512

D03180A6_A6Dp_1_CMV-Forward

May 16,2016 02:11PM, JST

KB.bcp

KB_3500_POP7_BDTV3.mob

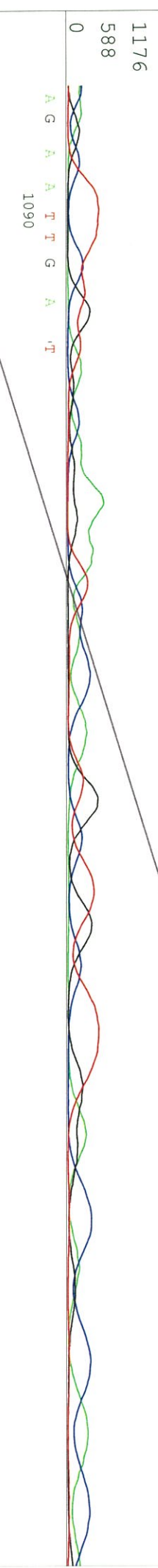
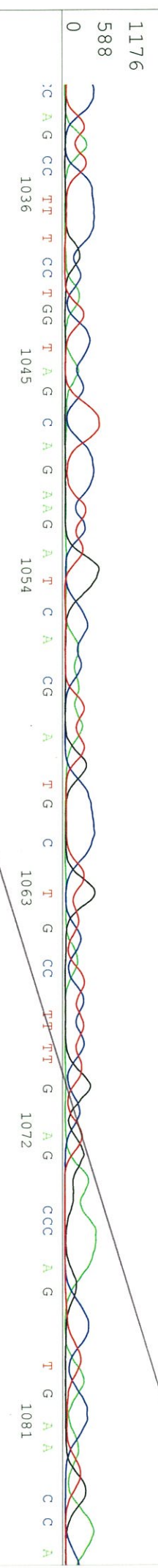
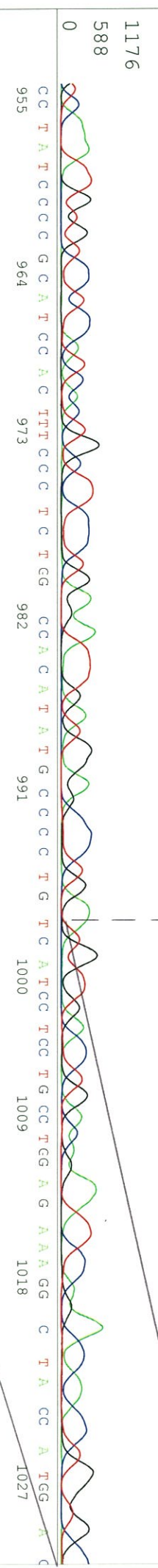
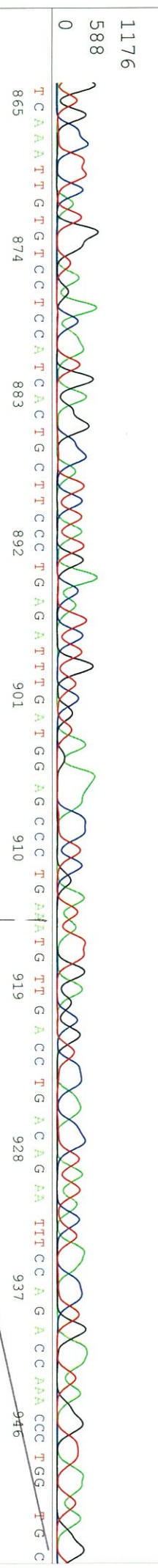
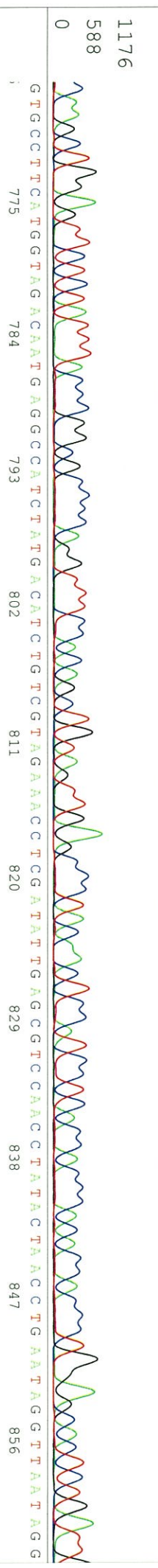
May 16,2016 02:50PM, JST

KB 1.4.1.8 Cap:10

Pis 1611 to 12543 PK1 Loc:1588

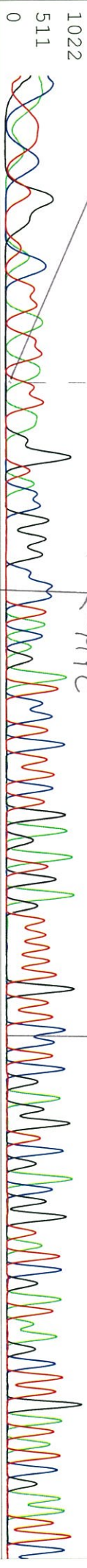
Spacing:10.88 Pts/Panel1350

Version 6.0 HISQV Bases: 925

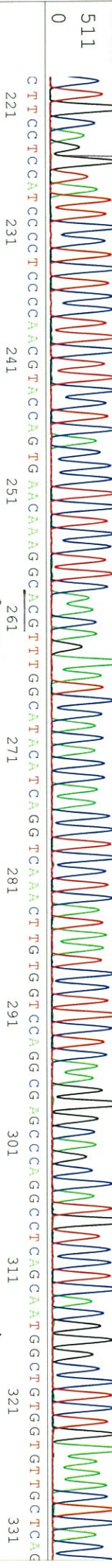


primer name B : T7_20bp

1 TA TTAC TG G TAC TTA TTATTA GGTACC GG G C C C T A C A G A T C C T C T T C T G A G A T G A G T T T T G T T C C T C G A G G T C G A C G T A T C G A T A A G C T T G A T A T C
 11 21 31 41 51 61 71 81 91 101
 KpnI ApaI SfiI XhoI ScaI HindIII EcoRI
 ← MYC



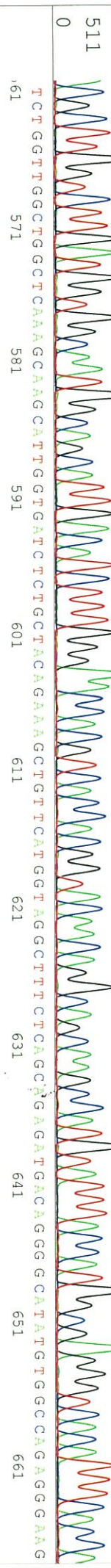
CTGCAGGTATTCCCTCCCTTCTTCTCCTCAACCCTCCCTTCAACGAAATCCACACCAACCCTCCCTCAATAATCCTTCTCAAGGGCAGCCATGTCTCTCACGGGCTTGAAACTCAC
 111 121 131 141 151 161 171 181 191 201 211
 ← TVBATA R64W NH_006605.1/678..(c)



CATGCCACAGCCTCTCTGTACCCTTGGCCAGGCTCTCCACCAGGCAACCACAGTGGGAGGCCTGGTAGTTGATGCCAACCTTGAAGCCAGTGGGGCAACCAACTCCACAAACTGGATGGT
 341 351 361 371 381 391 401 411 421 431 441
 R402



TCTGGTTGGCTGGCTCAAAGCAAGCATTTGGTGTATCTCTGCTACAGAAAGCTGTTCAAGCTTGAAGTGAACAAGGATGACAGGGGCATATGTGGCCAGAGGAAAG
 451 461 471 481 491 501 511 521 531 541 551



1022
 511
 0

S/N G:1525 A:1766 T:1545 C:2023

KB.bcp

D03180A6_A6Dp_1_T7_20bp

May 16, 2016 02:11PM, JST

KB 1.4.1.8 Cap:13

KB_3500_POP7_BDTV3.mob

May 16, 2016 02:50PM, JST

TGGATGCCGGGATAGGGCAACCAGGTGGTCGGAAATTCCTCAGGTCAA CATT CAGGGCTCCATCAAATCTCAGGGAAGCAAGTGATGGAGACAAATTGA

Pis 1615 to 11163 PK1 Loc:1592

Spacing:10.87 Pts/Panel1350

671 681 691 701 711 721 731 741 751 761

Version 6.0 HiSQV Bases: 874

CCATTAACTATTCAGGTTAGTATAGGTTGGACCGCTCAA TATCGAGGTTTC TAACGACAG ATGTCATAGATGGCCCTCATGTGCTTACCATTGAA

Pls 1615 to 11163 PK1 Loc:1592

Plate Name: 20160516 Kitaku

771 781 791 801 811 821 831 841 851 861

CACAA TCAGAGTGC TCCAGGGTGGTGGTGGTGA GAGAGTAAAGAG G TGGGTTT

871 881 891 901 911



S/N G:147 A:134 T:114 C:168

D03180A6_A6DP_1_SV40pro_F_V2

May 16, 2016 02:11PM, JST

KB.bcp

primer name C : SV40pro_F_V2

KB_3500_POP7_BDTV3.mob

May 16, 2016 02:50PM, JST

KB 1.4.1.8 Cap:16

5'-TCGGCCTCTGAGCTATTC-3'

Pts 1608 to 12523 Pk1 Loc:1585

Spacing:10.85 Pts/Panel1350

Version 6.0 HiSeqV Bases: 917

Start 73
→ NeoR/Kan^r



SN G:147 A:134 T:114 C:168

D03180A6_A6Dp_1_SV40pro_F_V2

May 16, 2016 02:11PM, JST

KB.bcp

KB_3500_POP7_BDTV3.mob

May 16, 2016 02:50PM, JST

KB 1.4.1.8 Cap:16

Pts 1608 to 12523 PK1 Loc:1585

Spacing:10.85 Pts/Panel1350

Version 6.0

Plate Name: 20160516 Kitaku

T T T T C T G G A T T C A T C G A C T G T G G C C C G C T G G G T G G C C G A C C C G T A T C A G A C A T A G C G T T G G C T A C C C G T G A A G A A C C T T G G C G G A A T G G

