

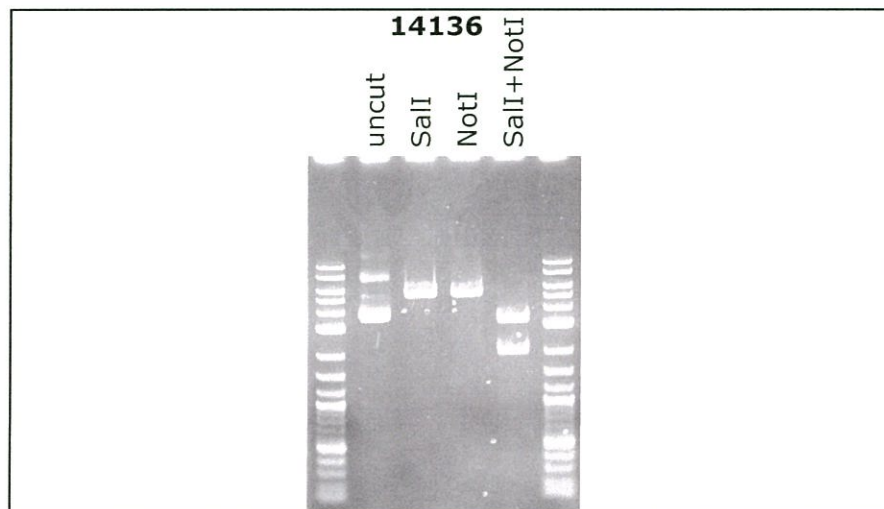
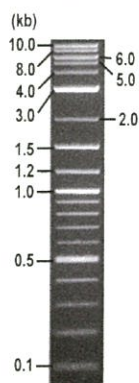


RIKEN DNA BANK

clone name : pIDT-SMART(C-TSC)

- Clone ID : RDB\_ 14136
- Lot : 14136\_ A6Dm
- DNA Concentration : 25 nanogram/microliter
- Volume : 40 microliter
- Form : DNA solution in TE buffer
- Host : DH5 alpha
- Culture : LB medium
- Antibiotics : 25 microgram/ml Kanamycin
- Purification : QIAGEN QIAprep Spin Miniprep kit
- Digestion by restriction enzyme

1 kb Plus DNA Ladder  
(NEB#N3200L),  
250 ng/well



Electrophoresis : 100 nanogram DNA per lane ; 1% agarose gel , 1 x TAE Buffer

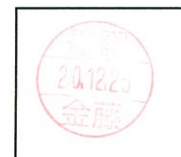
Restriction enzyme	Expected size of fragment	
<b>SalI</b>	<b>5.3</b>	kbp
<b>NotI</b>	<b>5.3</b>	kbp
<b>SalI+NotI</b>	<b>3.3, 2.0</b>	kbp
		kbp

### ● Confirmation of the insertion sequence

Please be sure to check our sequence analysis results before your request.

Sequence name	Primer ID	Primer name	Confirmed feature
Sequence - A	Pr0606	BGH_rev2	bGH pA
Sequence - B	Pr0349	M13fwd	CMV 1(CMV en,CMV pro)
Sequence - C	Pr0384	RU5-R	RU5',CMV 1(CMV pro,CMV en)
Sequence - D	Pr0385	BGH_F2	bGHp(A),hTERT,SV40
Sequence - E	Pr0160	M13R	CMV 2(CMV en),SV40
Sequence - F	-	-	-
Sequence - G	-	-	-
Sequence - H	-	-	-

APPROVED BY :

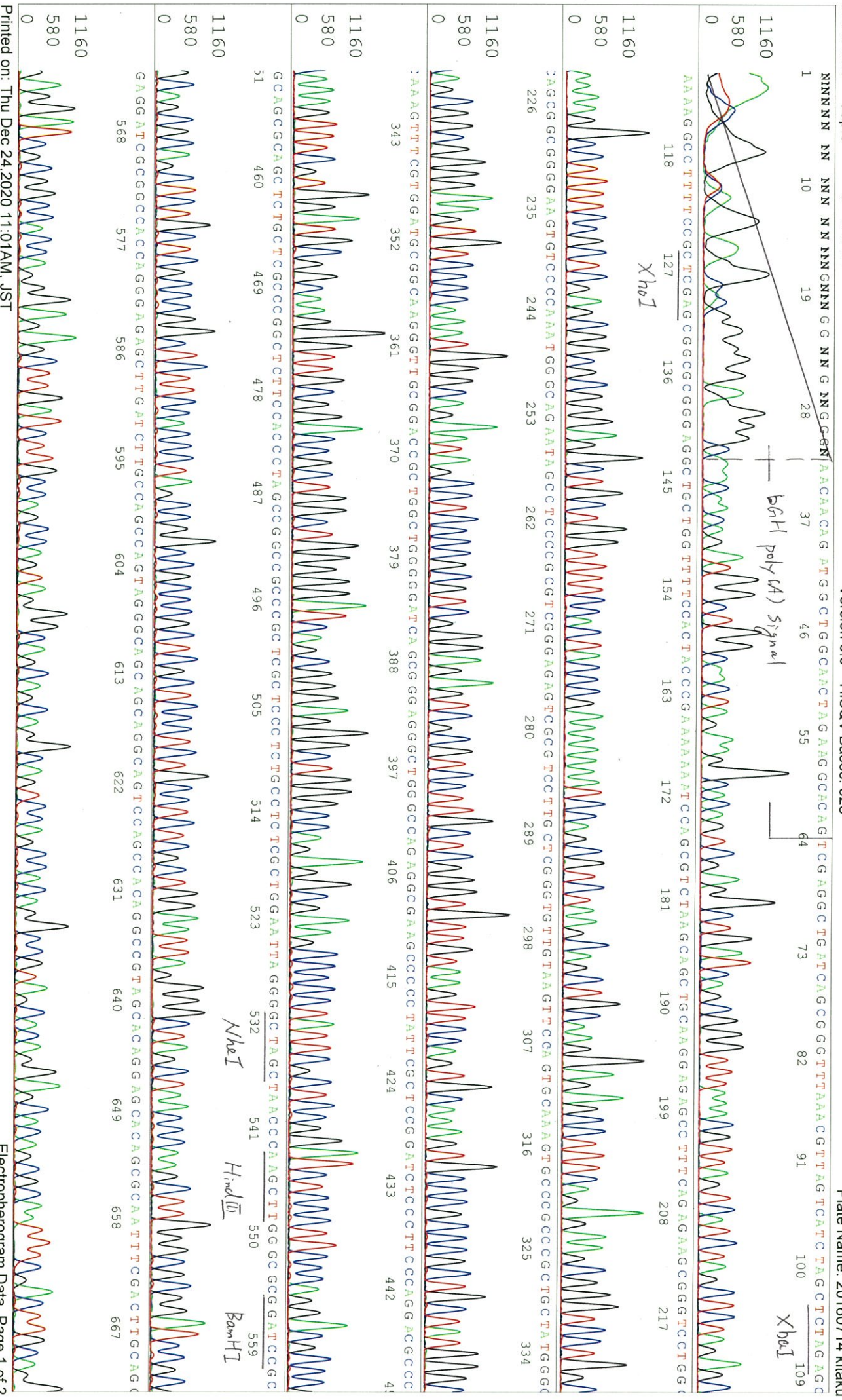




S/N G:55 A:48 T:41 C:74  
 KB bop  
 KB 1.4.1.8 Cap:8  
 primer name **A** : BGH\_rev2  
 5- TATTAGGAAGGACAGTGGG -3'

D03160A6\_A6Dm\_1\_BGH\_rev2  
 KB\_3500\_POP7\_BDTV3.mob  
 Pts 1411 to 12502 Pk1 Loc:1388  
 Version 6.0 HISQV Bases: 923

Jul 14,2016 03:24PM, JST  
 Jul 14,2016 03:50PM, JST  
 Spacing:11.19 Pts/Panel1350  
 Plate Name: 20160714 Kitaku





SN G:55 A:48 T:41 C:74  
 KB.bcp  
 KB 1.4.1.8 Cap:8

D03160A6\_A6Dm\_1\_BGH\_rev2\_C02\_08

D03160A6\_A6Dm\_1\_BGH\_rev2

KB\_3500\_POP7\_BDTV3.mob

Pts 1411 to 12502 Pk1 Loc:1388

Version 6.0 HISQV Bases: 923

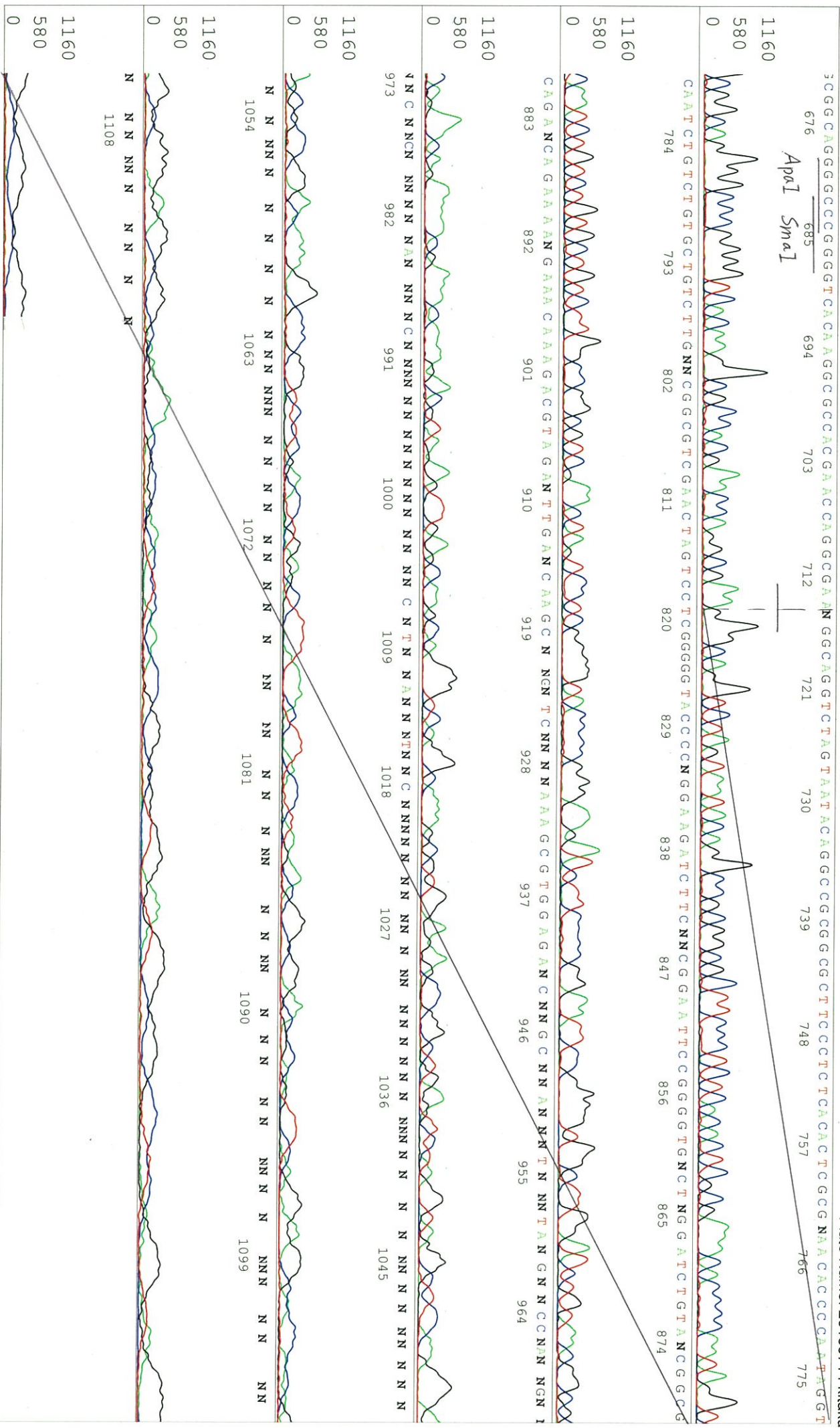
Inst Model/Name 3500/3500 Instrument

Jul 14, 2016 03:24PM, JST

Jul 14, 2016 03:50PM, JST

Spacing: 11.19 Pst/Panel1350

Plate Name: 20160714 kitaku











S/N G:737 A:642 T:558 C:838  
KB bcp  
KB 1.4.1.8 Cap:11

primer name C: RU5-F  
5-AGACTCAGCCGGCTCTCCAC-3'

D03160A6\_A6Dm\_1\_RU5-R  
KB\_3500\_POP7\_BDTV3.mob  
Pis 1502 to 12539 Pk1 Loc:1479  
Version 6.0 HiSQV Bases: 865

Jul 20, 2016 09:16AM, JST  
Jul 20, 2016 09:49AM, JST  
Spacing: 11.22 Pts/Panel1350  
Plate Name: 20160720 Kitaku







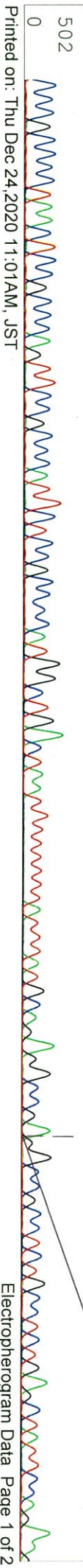
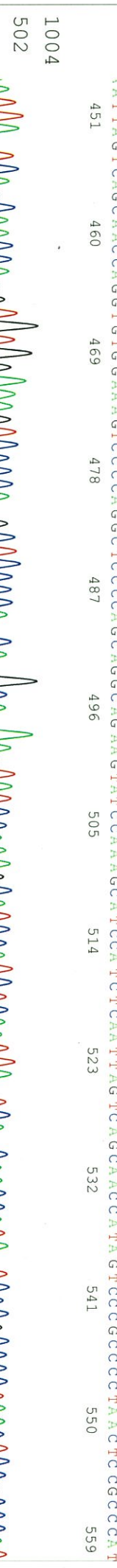
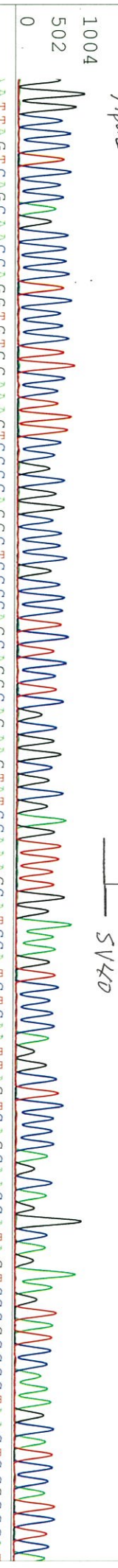
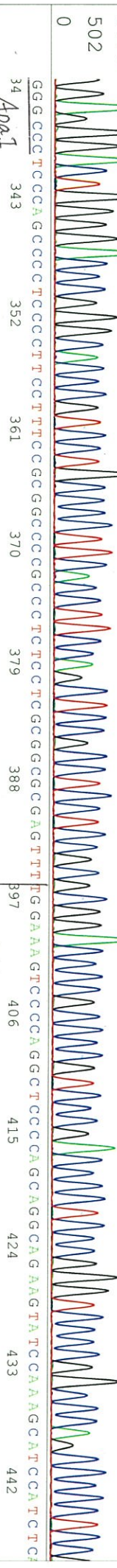
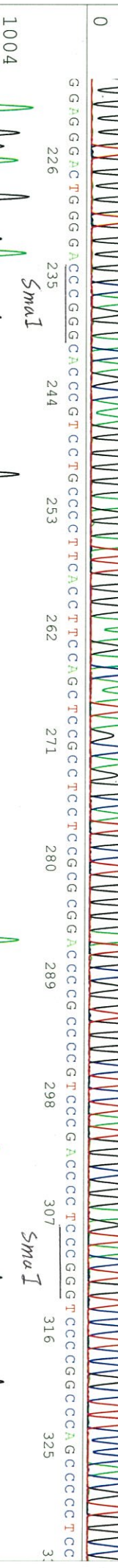
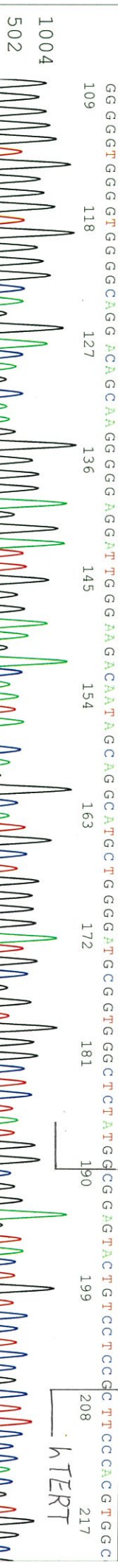
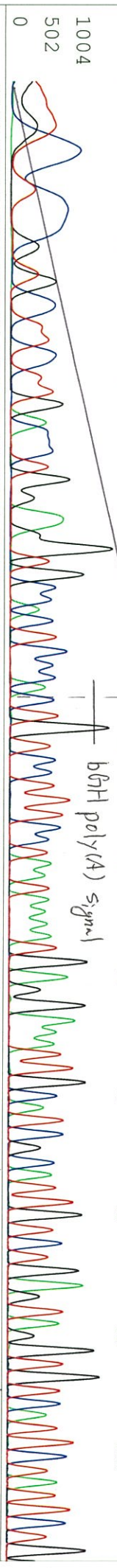


S/N G:644 A:450 T:539 C:872 primer name D : BGH\_F2

D03160A6\_A6Dm\_1\_BGH\_F2  
KB\_3500\_POP7\_BDTv3.mob  
Pis 1524 to 12488 Pk1 Loc:1501

July 20, 2016 09:16AM, JST  
July 20, 2016 09:49AM, JST  
Spacing: 11.13 Pts/Panel1350  
Plate Name: 20160720 kitaku

KB.bcp KB 1.4.1.8 Cap:8 5-CTGTGCCTTCTAGTTGCCAG-3' Version 6.0 HISQV Bases: 864





S/N G:158 A:134 T:119 C:128 primer name E : M13R  
KB.bcp  
KB 1.4.1.8 Cap:11 5'-CAGGAACACGCTATGAC-3'

D03160A6\_A6Dm\_1\_M13R\_D11\_11  
D03160A6\_A6Dm\_1\_M13R  
KB\_3500\_POP7\_BDTV3.mob  
Pfs 1563 to 12356 Pk1 Loc:1540  
Version 6.0 HISQV Bases: 890

Inst Model/Name 3500/3500 Instrument  
May 13,2016 10:26AM, JST  
May 13,2016 10:52AM, JST  
Spacing:10.84 Pfs/Panel1350  
Plate Name: 20160513 mix

