

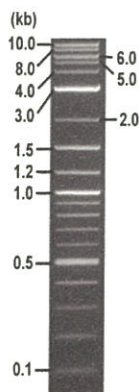


**RIKEN DNA BANK**

clone name : pME-kpm

- Clone ID : RDB \_ 07697
- Lot : 14126 \_ A6Dc
- DNA Concentration : 25 nanogram/microliter
- Volume : 40 microliter
- Form : DNA solution in TE buffer
- Host : DH5 alpha
- Culture : LB medium
- Antibiotics : 100 microgram/ml Ampicillin
- Purification : QIAGEN QIAprep Spin Miniprep kit
- Digestion by restriction enzyme

2-Log DNA Ladder  
(NEB#N3200L),  
125 ng/well



Electrophoresis : 80 nanogram DNA per lane ; 1% agarose gel , 1 x TAE Buffer

Restriction enzyme	Expected size of fragment
<u>BglII</u>	<u>7.1</u> kbp
<u>XhoI</u>	<u>4.1, 3.0</u> kbp
<u>NcoI</u>	<u>4.0, 3.2</u> kbp
_____	_____ kbp
_____	_____ kbp

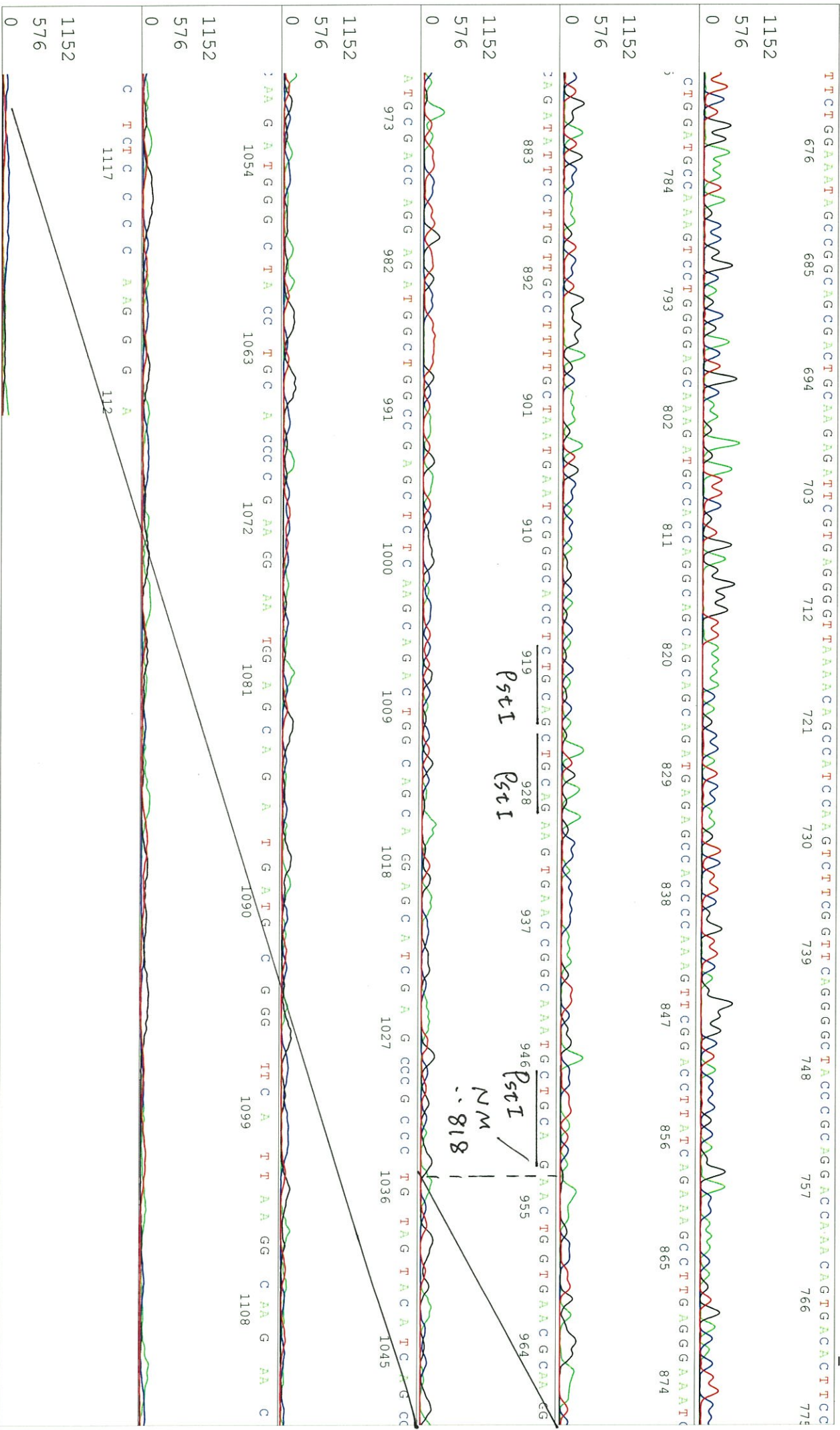
● Confirmation of the insertion sequence

Sequence name	Primer name	Sequence name	Primer name
Sequence - A	SRapro_F	Sequence - E	-
Sequence - B	ME-1290Rv	Sequence - F	-
Sequence - C	Lats2#11	Sequence - G	-
Sequence - D	-	Sequence - H	-



APPROVED BY :





SN G:411 A:377 T:402 C:422

primer name  $\beta$  : ME-1290Rv

KB\_bcp KB\_3500\_POP7\_BDTV3.mob

Apr 14, 2016 03:16PM, JST

KB 1.4.1.8 Cap:6

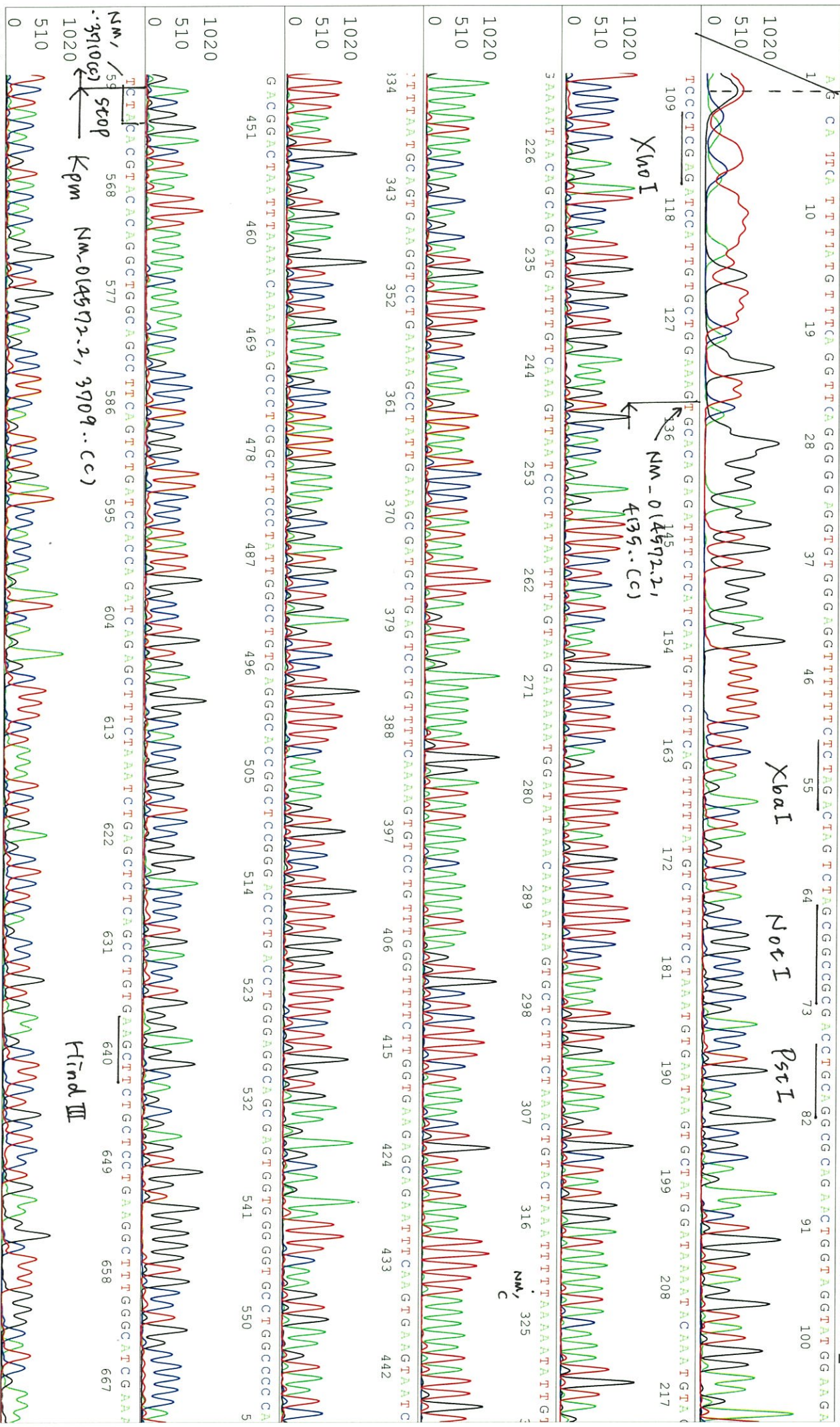
5'-ATAAGCTGCAATAAACAAGTTAACAAAC-3'

Pis 1427 to 13071 Pk1 Loc:1404

Spacing:11.46 Pts/Panel1350

Version 6.0 HiSeqV Bases: 985

Plate Name: 20160414\_dhnbank



GGGTTAGCCATTTGTCATCAAAGAACCCTTCGGAAAGGTGAATTCGTAATAATGGCCGTGAGGATGCTTGTATTGGGGCGAAGGTGAGTGTGTCCTCCAGGGCCTTTGGTGCATACT  
 676 685 694 703 712 721 730 739 748 757 766 775

*EcoRI*

TCGCTGGCATTCTCCAAAGGGCTTTCTTCCATCTACGGGGTCCGAAATTCGAGGTGTTCCATGGGGTGGCTGATGGTGGGAACGTAGGGGGCTGGCTTCCGGATG  
 784 793 802 811 820 829 838 847 856 865 874 883

*NcoI*

TCACTGGAGAAAGTCAATGGCCGTGAAAGGAGGGTGGCCCTTCAAGTCAATCGGCCCAATTCCGCCCAEGCGGTGGTCTGCCGAGCAGCAGAGCATTGG  
 892 901 910 919 928 937 946 955 964 973 982

ATGAGGTCCTTGCCCTCA GGCTCAAGCTTTCACTGGGCTGGAAATTCAGCGTGTTCCTCCAGTGAATCACCTTCAGCTGG  
 991 1000 1009 1018 1027 1036 1045 1054 1063

...3291 (c)

TTGGAGTTAAAGTTGCTTGAATAAAGGGCCGGCTGCTGCTCAAGCAATCTCCGAAGAGAGATCACTTCTG  
 1072 1081 1090 1099 1108 1117

CATCTCCAGCAAG  
 1126



S/N G:560 A:471 T:426 C:454

primer name C : Lats2#11

07697\_14126\_A6Dc\_Lats2#11

Apr 14, 2016 02:38PM, JST

KB.bcp

5- CACGTGGAGATGTCATCAA -3'

KB\_3500\_POP7\_BDTV3.mob

Apr 14, 2016 03:16PM, JST

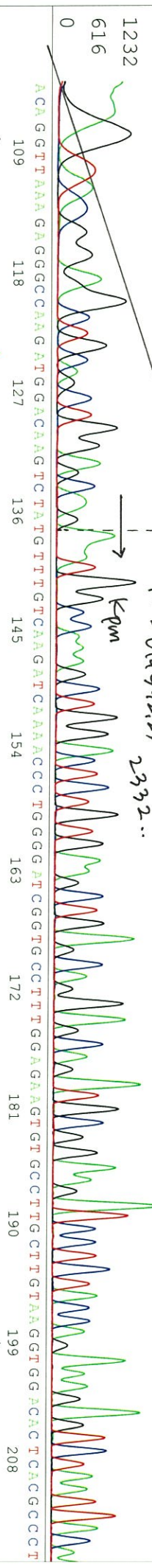
KB 1.4.1.8 Cap:9

Pis 1427 to 12960 Pk1 Loc:1404

Version 6.0 HiSQV Bases: 997

Spacing: 11.42 Pts/Panel1350

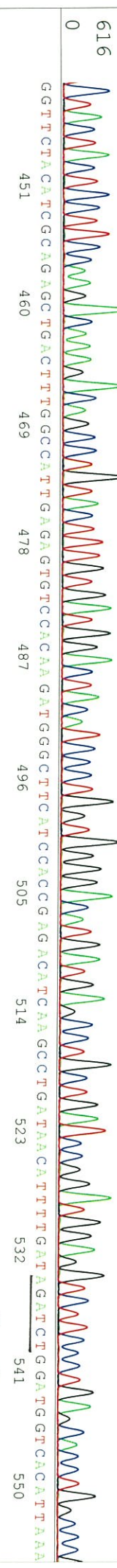
1 C A A G T A C G G A G C T G C A G C T G G A G C A A G C T G G A C T C T G T G A A G C T G A G C A G A G C A G C A G A T G C C T T A C C A A A A G A G T C T T A A T T A C A



ACA G G T T A A A G A G G C C A A G A T G G A C A A G T C T A T G T T T G T C A A G A T C A A A A C C C T G G G G A T C C G G T G C C T T T G G A G A A G T G T G C C T T G T A A G G T G G A C T C A C G C C C C T



G T A C G C C A T G A A G A C C C T A A G G A A A A A G G A T G T C C T G A A C C G G A A P T C A G G T G G C C C A C G T C A A G G C C G A G A G G A C A T C C T G C C C G A G G C A G A C A A T G A G T G G G T G T C A A A C T



C T A C T A C T C C T T C C C A A G A C A A G A C A G C C C T G T A C T T T G T G A T G G A C T A C A T C C C T G G T G G G G A C A T G A G C C T G C T G A T C C C T G A G C A C C T G G C C C T G G C C C



G G T T C T A C A T C C G C A G A G C T G A C T T T G G C C A T T G A G A G T G T C C A C A A G A T G G G C T T C A T C C A C C G A G A C A T C A A G C C T G A T A A C A T T T G A T A G A T C T G G A T G G T C A C A T T A A A

Bq 1 II

