

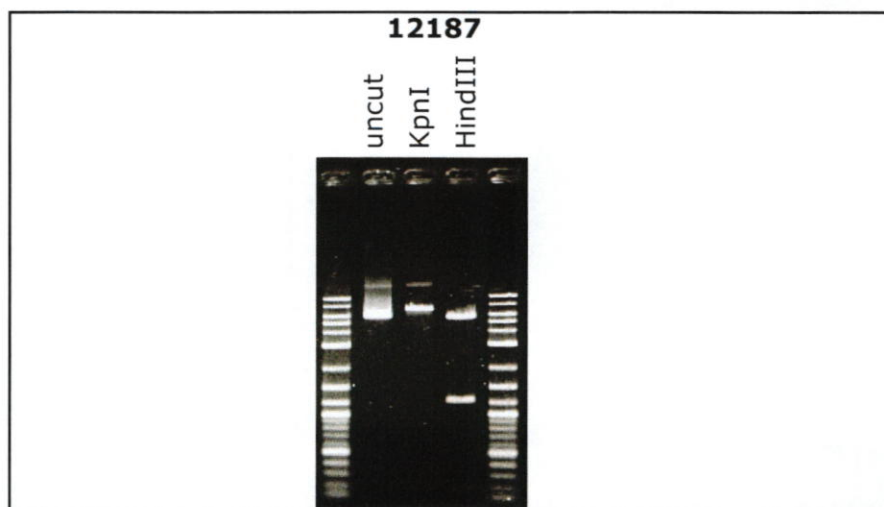
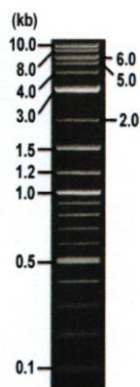


RIKEN DNA BANK

clone name : pcDNA3.1-pA83-Tead4EnR

- Clone ID : RDB\_12187
- Lot : 13966\_A6Bm
- DNA Concentration : 25 nanogram/microliter
- Volume : 40 microliter
- Form : DNA solution in TE buffer
- Host : DH5 alpha
- Culture : LB medium
- Antibiotics : 100 microgram/ml Ampicillin
- Purification : QIAGEN QIAprep Spin Miniprep kit
- Digestion by restriction enzyme

1 kb Plus DNA Ladder  
(NEB#N3200L),  
250 ng/well



Electrophoresis : 100 nanogram DNA per lane ; 1% agarose gel , 1 x TAE Buffer

Restriction enzyme

Expected size of fragment

|                |   |                      |     |
|----------------|---|----------------------|-----|
| <b>KpnI</b>    | : | <b>7.1</b>           | kbp |
| <b>HindIII</b> | : | <b>5.7, 1.2, 0.2</b> | kbp |
|                | : |                      | kbp |
|                | : |                      | kbp |

### ● Confirmation of the insertion sequence

Please be sure to check our sequence analysis results before your request.

| Sequence name | Primer ID | Primer name    | Confirmed feature            |
|---------------|-----------|----------------|------------------------------|
| Sequence - A  | Pr0016    | CMV_Forward    | CMV pro,insert 5'(Tead4,EnR) |
| Sequence - B  | Pr0763    | GNP Primer #10 | TRF2-3'UTR pA,insert 3'(EnR) |
| Sequence - C  | Pr0606    | BGH_rev2       | bGHpA,TRF2-3'UTR pA          |
| Sequence - D  | Pr0110    | SV40pro_F      | SV40 pro_ori,NeoR            |
| Sequence - E  | -         | -              | -                            |
| Sequence - F  | -         | -              | -                            |
| Sequence - G  | -         | -              | -                            |
| Sequence - H  | -         | -              | -                            |

APPROVED BY :



SN G:26 A:25 T:20 C:31

primer name A : CMV-Forward

KB 3500\_POP7\_BDTV3.mob

Feb 25, 2016 01:58PM, JST

KB 1.4.1.8 Cap:13

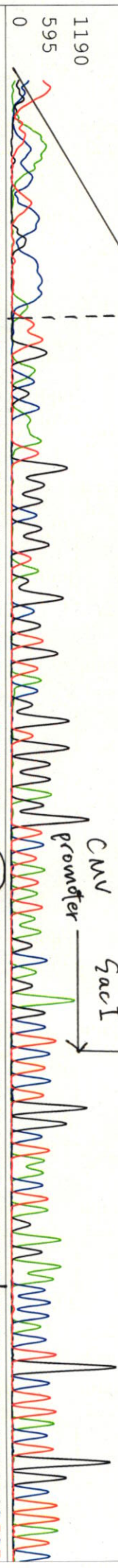
5-GCACCAAAATCAACGGACTT-3'

Pis 1359 to 13048 Pk1 Loc:1336

Feb 25, 2016 02:24PM, JST

Version 6.0 HISQV Bases: 985

Spacing: 11.59 Pts/Panel1350 Plate Name: 20160225\_bank

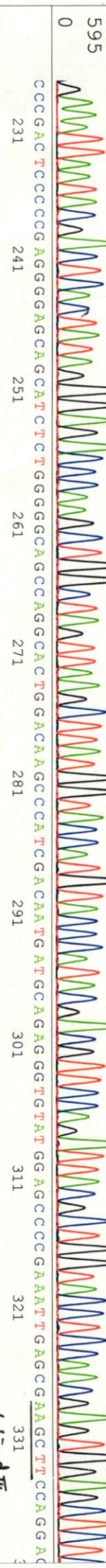


T9 pro

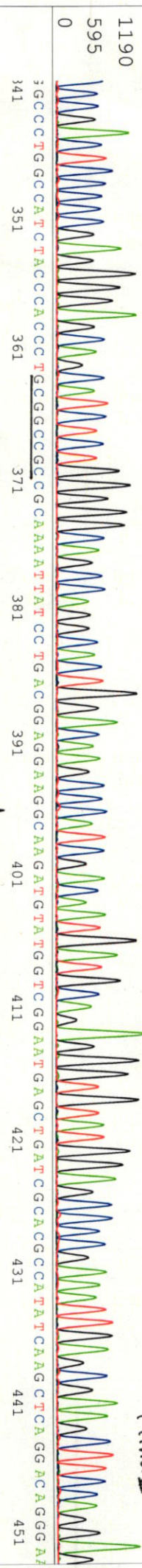
Hind III Kpn I

HA

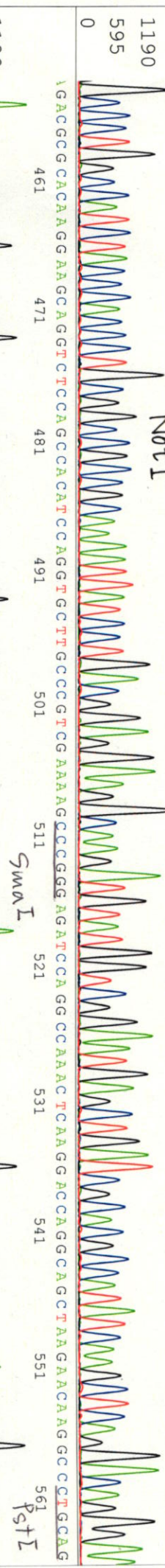
Kpn I Tread4



Hind II



Not I



Sma I

Pst I



Sma I

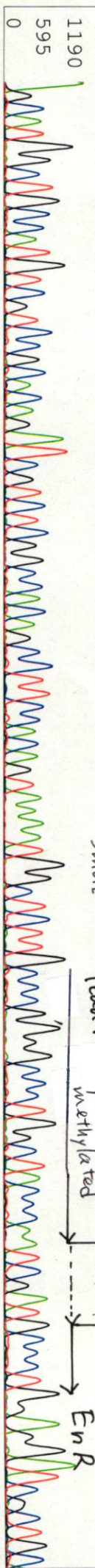
Tead4

Apa I

Cla I

En R

Pst I



A G C C C A C A G T C A G C C G C C C A G C C C C A T T A C C C T T A C C A A T G C A G C A T C T T C A C C C A C C A G C A A G C C A G C A G C C A C C A G C C A G C C A A T G C C A G C C A C C A C C A G C T G C

1190

595

0

791 801 811 821 831 841 851 861 871 881 891  
PstI PstI PstI PstI PstI PstI PstI PstI PstI PstI PstI

1190

595

0

G C C G C C C A C G C T C A T G C T G C T G C A C T G C A G C C G C C G G T G T C T C C A C C A T C C G G C A A T G C C C T T C G A T G C C G C C T G C C A G C T C C A C C G C C C G C C C A T C C T G C T C C A C C G T C C A C G C C G A T C A A

1190

595

0

1001 1011 1021 1031 1041 1051 1061 1071 1081 1091  
G G A G G A A A G C G A C C T C C G G T G A T C G G T G A C A A T G G A G T T T C C A C A A A T C A G A A C G G C A C C G A C A A C G A G G A G G A A G C G G A G G A A T

1190

595

0

1101 1111 1121 1131 1141 1151 1161 1171  
G A C G A T C A T G A T G T G A G T G T G G A T G A T G A T A C C G T C C G C G G A A C C C G T G G C A A C A T C C C G T C C A A C C A

1190

595

0

A C C / G C A G T C F G A A C F G C  
1181 1191



S/N G:21 A:16 T:23 C:20

KB:bcp

KB 1.4.1.8 Cap:19

primer name C : BGH\_rev2

5- TATTAGGAAGACAGTGGG -3'

Pis 1351 to 13151 Pk1 Loc:1328

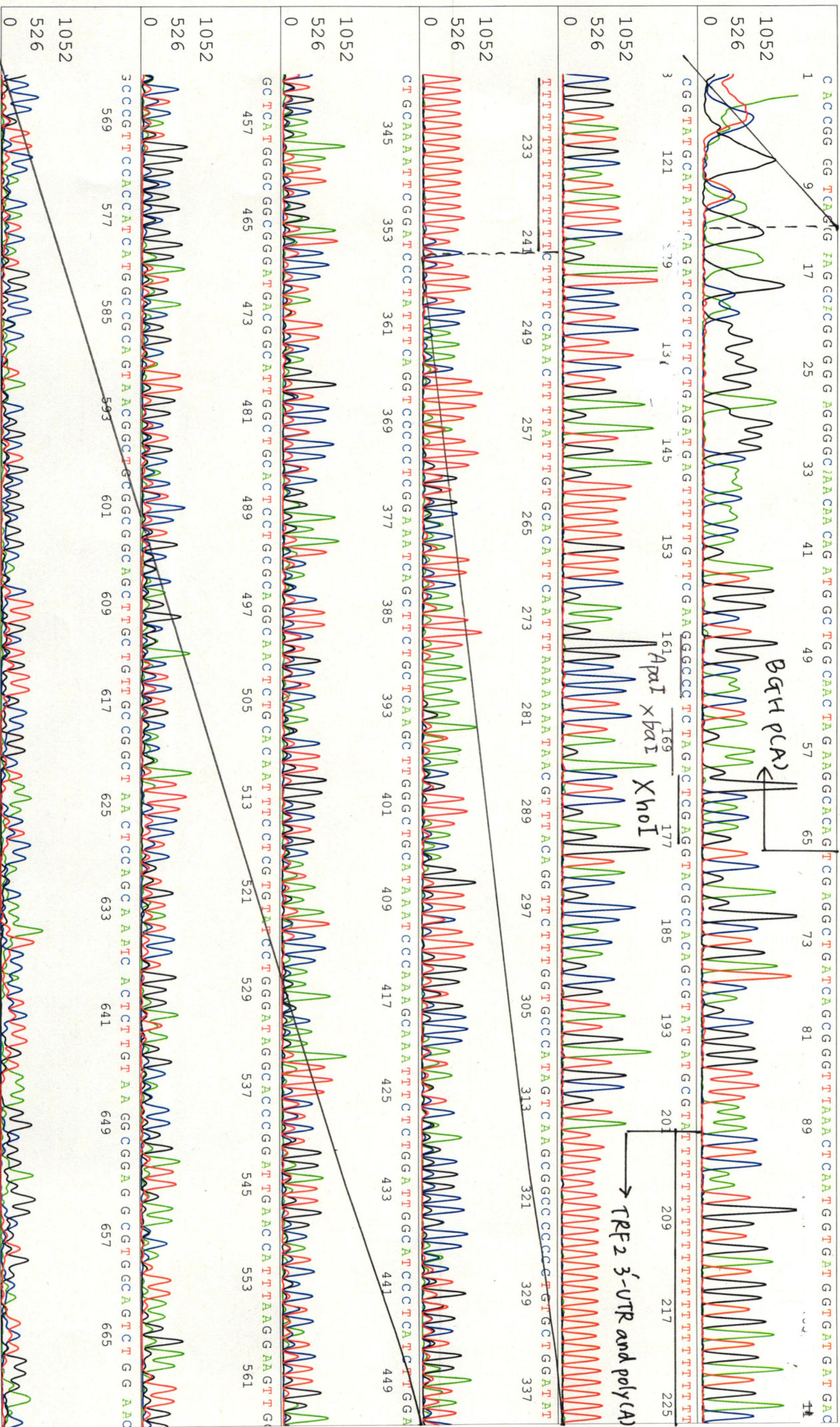
Version 6.0 HISQV Bases: 436

D03261A2\_A6Bm\_3\_BGH\_rev2\_G01\_19

D03261A2\_A6Bm\_3\_BGH\_rev2

KB\_3500\_POP7\_BDIv3.mob

Inst Model/Name 3500/3500 Instrument  
Feb 25, 2016 01:58PM, JST  
Feb 25, 2016 02:24PM, JST  
Spacing: 11.73 Pts/Panel1350  
Plate Name: 20160225\_bank



S/N G:176 A:129 T:165 C:181

primer name D : SV40pro\_F

D03261A2\_A6Bm\_3\_SV40pro\_F

Feb 25, 2016 01:58PM, JST

KB.bcp

5- TATTATGACAGAGCCGAGG -3'

KB\_3500\_POP7\_BDTv3.mob

Feb 25, 2016 02:24PM, JST

KB 1.4.1.8 Cap:22

Pts 1330 to 13139 Pk1 Loc:1307

Version 6.0 HiSQV Bases: 972

Spacing:11.62 Pts/Panel1350

SV40 pro R out

Small

