

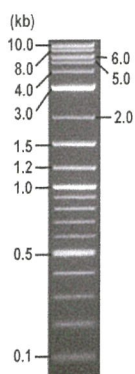


RIKEN DNA BANK

clone name : pET28/PlyA2-EGFP-His6

- Clone ID : RDB _ 13962
- Lot : 13962 _ A6Bt
- DNA Concentration : 25 nanogram/microliter
- Volume : 40 microliter
- Form : DNA solution in TE buffer
- Host : DH5 alpha
- Culture : LB medium
- Antibiotics : 25 microgram/ml Kanamycin
- Purification : QIAGEN QIAprep Spin Miniprep kit
- Digestion by restriction enzyme

1 kb Plus DNA Ladder
(NEB#N3200L),
250 ng/well



Electrophoresis : 100 nanogram DNA per lane ; 1% agarose gel , 1 x TAE Buffer

Restriction enzyme	Expected size of fragment
BamHI	6.4 kbp
HindIII	5.3, 1.1 kbp
	_____ kbp
	_____ kbp

● Confirmation of the insertion sequence

Please be sure to check our sequence analysis results before your request.

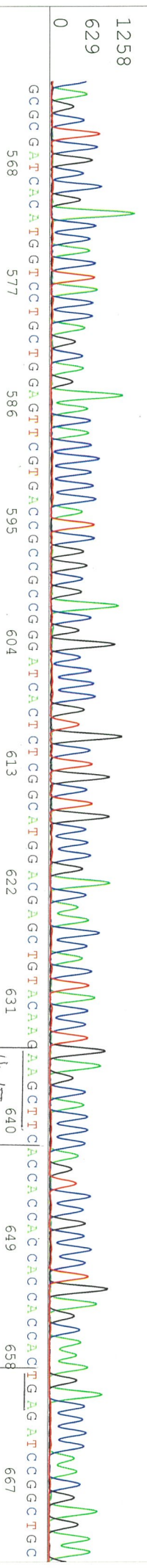
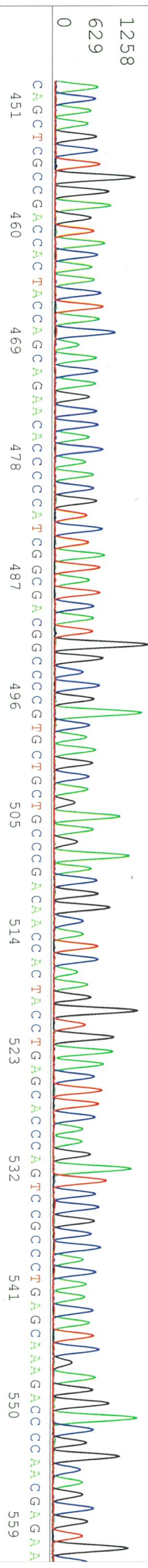
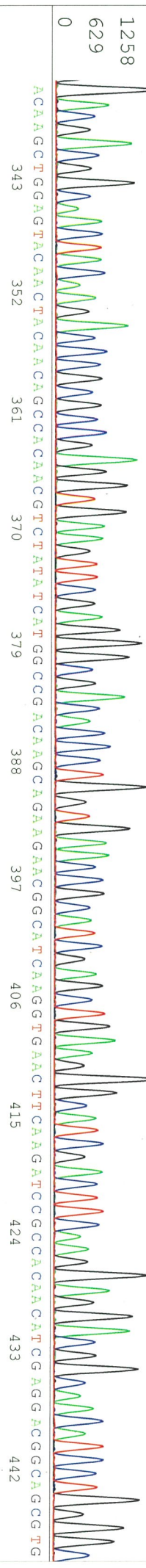
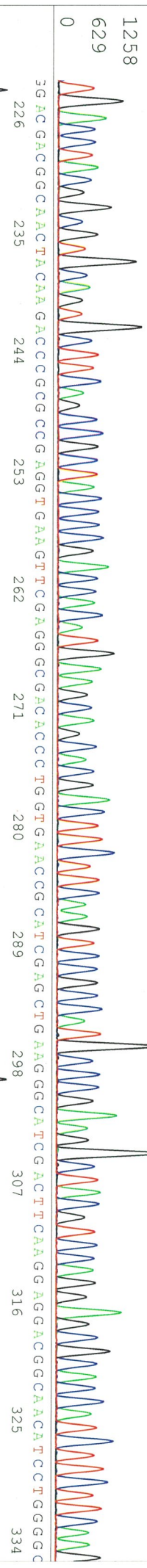
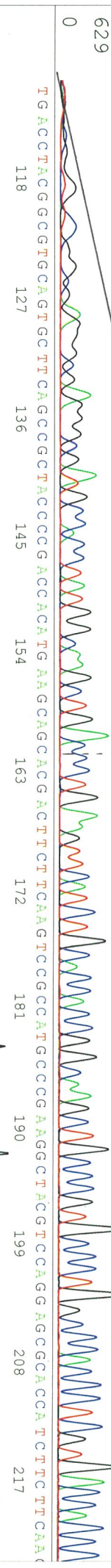
Sequence name	Primer ID	Primer name	Confirmed feature
Sequence - A	Pr0065	pBR322_BamHI_R	RBS, insert 5' (PlyA2, EGFP 5')
Sequence - B	Pr0649	EGFP-N_F	insert 3' (EGFP 3'), 6xHis
Sequence - C	Pr0743	EGFP-M_R	insert mid (EGFP 5', PlyA2 3')
Sequence - D	Pr0335	pGL3_RV4	lacI 3'
Sequence - E	-	-	-
Sequence - F	-	-	-
Sequence - G	-	-	-
Sequence - H	-	-	-

APPROVED BY :



N N N N N N N N N N G N N N N N N N G C C C G N G C A N N C C T A T G G C A A G C T G N N C C T G A G T T C A T C T G C A C C C C G C C A A G C C T G C C C C G T G C C C C A C C C T C G T G A C C A C C C

EGFP



EGFP

6x HIS

HindIII

SN G:685 A:455 T:393 C:518

primer name Φ : pGL3_RV4

D03144A5_A6Bt_1_pGL3_RV4

Mar 18,2016 02:11PM, JST

KB:bcp

5-GACGATAGTCATGCCCGCG-3'

KB_3500_POP7_BDTV3.mob

Mar 18,2016 02:37PM, JST

KB 1.4.1.8 Cap:21

Pts 1362 to 12597 PK1 Loc:1339

Spacing:11.15 Pts/Panel1350

Version 6.0 HiSQV Bases: 890

Plate Name: 20160318_mix

