

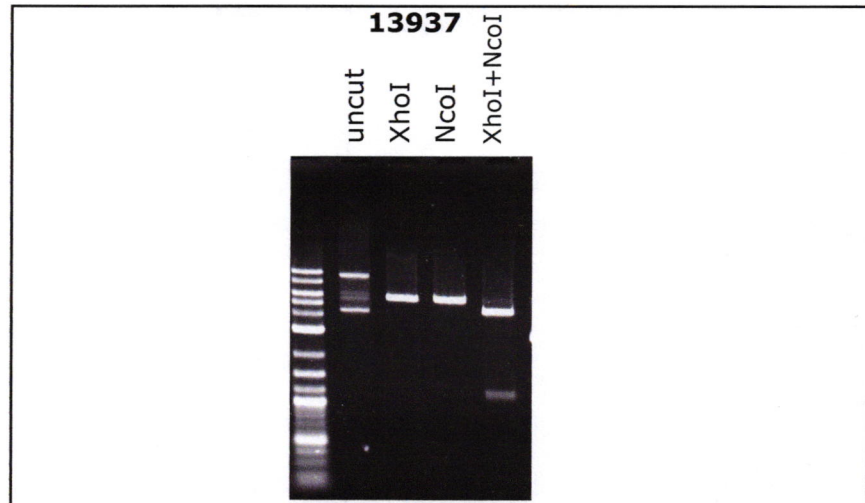
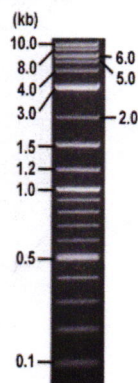


**RIKEN DNA BANK**

clone name : **pMK294 (mAID-mCherry2-Bsr)**

- Clone ID : RDB \_ 13937
- Lot : 13937 \_ A6B8
- DNA Concentration : 25 nanogram/microliter
- Volume : 40 microliter
- Form : DNA solution in TE buffer
- Host : DH5 alpha
- Culture : LB medium
- Antibiotics : 100 microgram/ml Ampicillin
- Purification : QIAGEN QIAprep Spin Miniprep kit
- Digestion by restriction enzyme

1 kb Plus DNA Ladder  
(NEB#N3200L),  
250 ng/well



Electrophoresis : 100 nanogram DNA per lane ; 1% agarose gel , 1 x TAE Buffer

Restriction enzyme	Expected size of fragment
<u><b>XhoI</b></u>	<u><b>5.8</b></u> kbp
<u><b>NcoI</b></u>	<u><b>5.8</b></u> kbp
<u><b>XhoI+NcoI</b></u>	<u><b>1.2, 4.6</b></u> kbp
	kbp

● **Confirmation of the insertion sequence**

Please be sure to check our sequence analysis results before your request.

Sequence name	Primer ID	Primer name	Confirmed feature
Sequence - A	Pr0410	M13_-40	insert mid(Linker,mAID,mCherry2 5')
Sequence - B	Pr0160	M13R	insert 3'(loxP,mPGK ter,bsr)
Sequence - C	Pr0243	PGK_N_rev	insert mid(loxP,SV40 pA,mCherry2 3')
Sequence - D	Pr0249	PGKpro_F	insert mid(bsr,mPGK ter)
Sequence - E	Pr0792	mCherry-C_R2	insert mid(mCherry2 5',mAID 3')
Sequence - F	-	-	-
Sequence - G	-	-	-
Sequence - H	-	-	-

APPROVED BY :

