



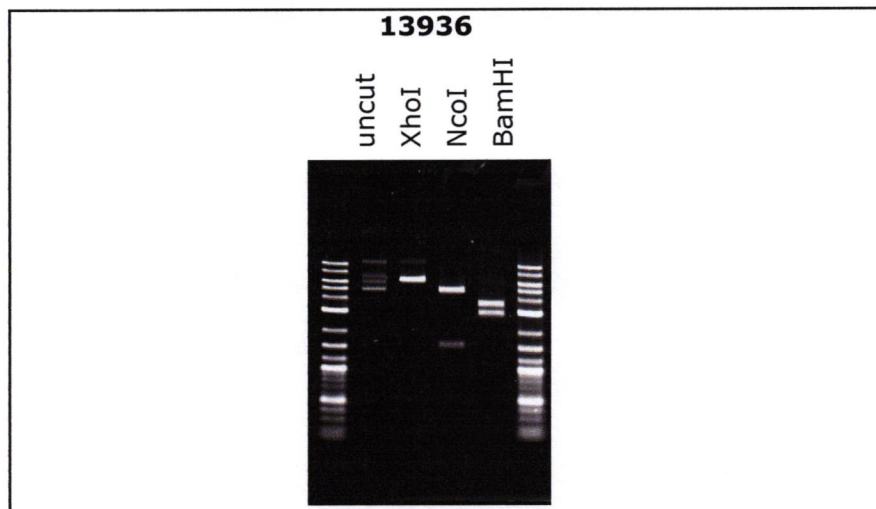
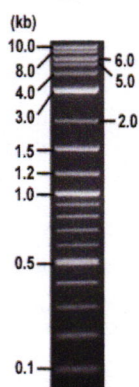
RIKEN DNA BANK

clone name : **pMK293 (mAID-mCherry2-Hygro)**

- **Clone ID** : RDB _ 13936
- **Lot** : 13936 _ A6B8
- **DNA Concentration** : 25 nanogram/microliter
- **Volume** : 40 microliter
- **Form** : DNA solution in TE buffer
- **Host** : DH5 alpha
- **Culture** : LB medium
- **Antibiotics** : 100 microgram/ml Ampicillin
- **Purification** : QIAGEN QIAprep Spin Miniprep kit

● **Digestion by restriction enzyme**

1 kb Plus DNA Ladder
(NEB#N3200L),
250 ng/well



Electrophoresis : 100 nanogram DNA per lane ; 1% agarose gel , 1 x TAE Buffer

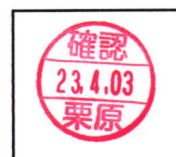
Restriction enzyme	Expected size of fragment
XhoI	6.4 kbp
NcoI	4.8, 1.5 kbp
BamHI	3.5, 2.9 kbp
	_____ kbp

● **Confirmation of the insertion sequence**

Please be sure to check our sequence analysis results before your request.

Sequence name	Primer ID	Primer name	Confirmed feature
Sequence - A	Pr0410	M13_-40	T7 pro.insert 5'(Linker,mAID,mCherry2 5')
Sequence - B	Pr0160	M13R	insert 3'(loxP,mouse PGK ter,HygR)
Sequence - C	Pr0243	PGK_N_rev	insert mid(loxP,SV40 pA,mCherry2 3')
Sequence - D	Pr0249	PGKpro_F	insert mid(HygR 5')
Sequence - E	-	-	-
Sequence - F	-	-	-
Sequence - G	-	-	-
Sequence - H	-	-	-

APPROVED BY :



S/N G:276 A:273 T:169 C:206

primer name A :M13_-40

D03070A20_A6B8_1_M13(-40)

Mar 03, 2016 10:30AM, JST

KB.bcp

5'GTTTCCAGTCACGACGTTGTA3'

KB 3500_POP7_BDTV3.mob

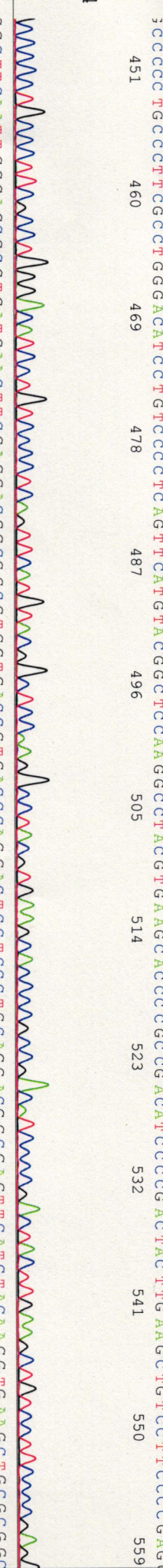
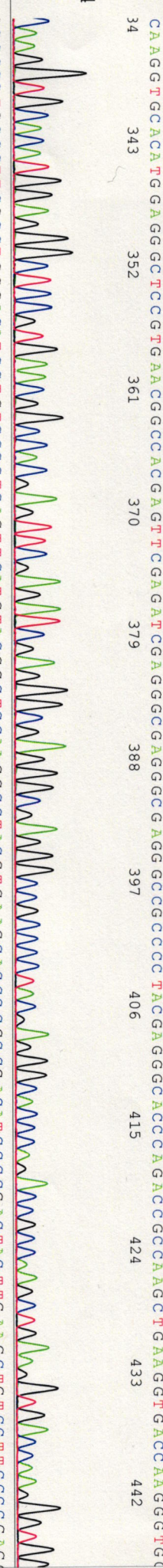
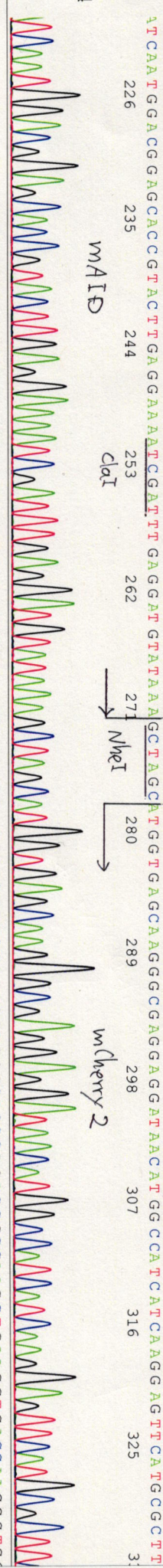
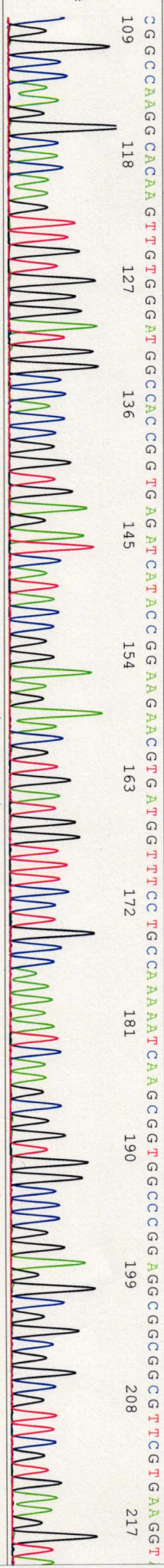
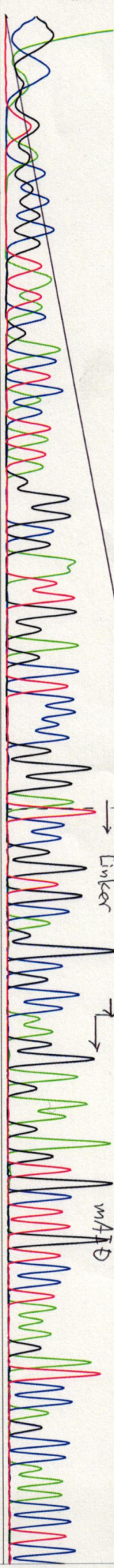
Mar 03, 2016 10:56AM, JST

KB 1.4.1.8 Cap:14

Pis 1368 to 12891 PK1 Loc:1345

Spacing: 11.44 Pst/Panel1350

NN NNN N NNNCN NANN GNN TNCNATA G GCGAAT TGGAGC TCCCCG GGTCCCGG TCGAGG CCGCCAAAGG AGAAGAGT GTGT CCTAAAGATCCAGCCAAACTC



676 ACCA 685 ACTT 694 ACCG 703 ACCG 712 ACCG 721 ACCG 730 ACCG 739 ACCG 748 ACCG 757 ACCG 766 ACCG 775 ACCG

Not

784 AGAN 793 GCTG 802 AANG 811 GCGA 820 GCGA 829 GCGA 838 GCGA 847 GCGA 856 GCGA 865 GCGA 874 GCGA 883 GCGA

892 GTTG 901 ANAT 910 TTTT 919 CCAC 928 CAGC 937 CAGC 946 CAGC 955 CAGC 964 CAGC 973 CAGC 982 CAGC

991 TNA 1000 TNC 1009 TNC 1018 TNC 1027 TNC 1036 TNC 1045 TNC 1054 TNC 1063 TNC 1072 TNC

1081 INN 1090 INN 1099 INN 1108 INN 1117 INN 1126 INN 1135 INN

1144 NNN 1153 NNN

1054
527
0

SN G:298 A:372 T:301 C:298

KB bcp

KB 1.4.1.8 Cap.13

primer name β : M13R

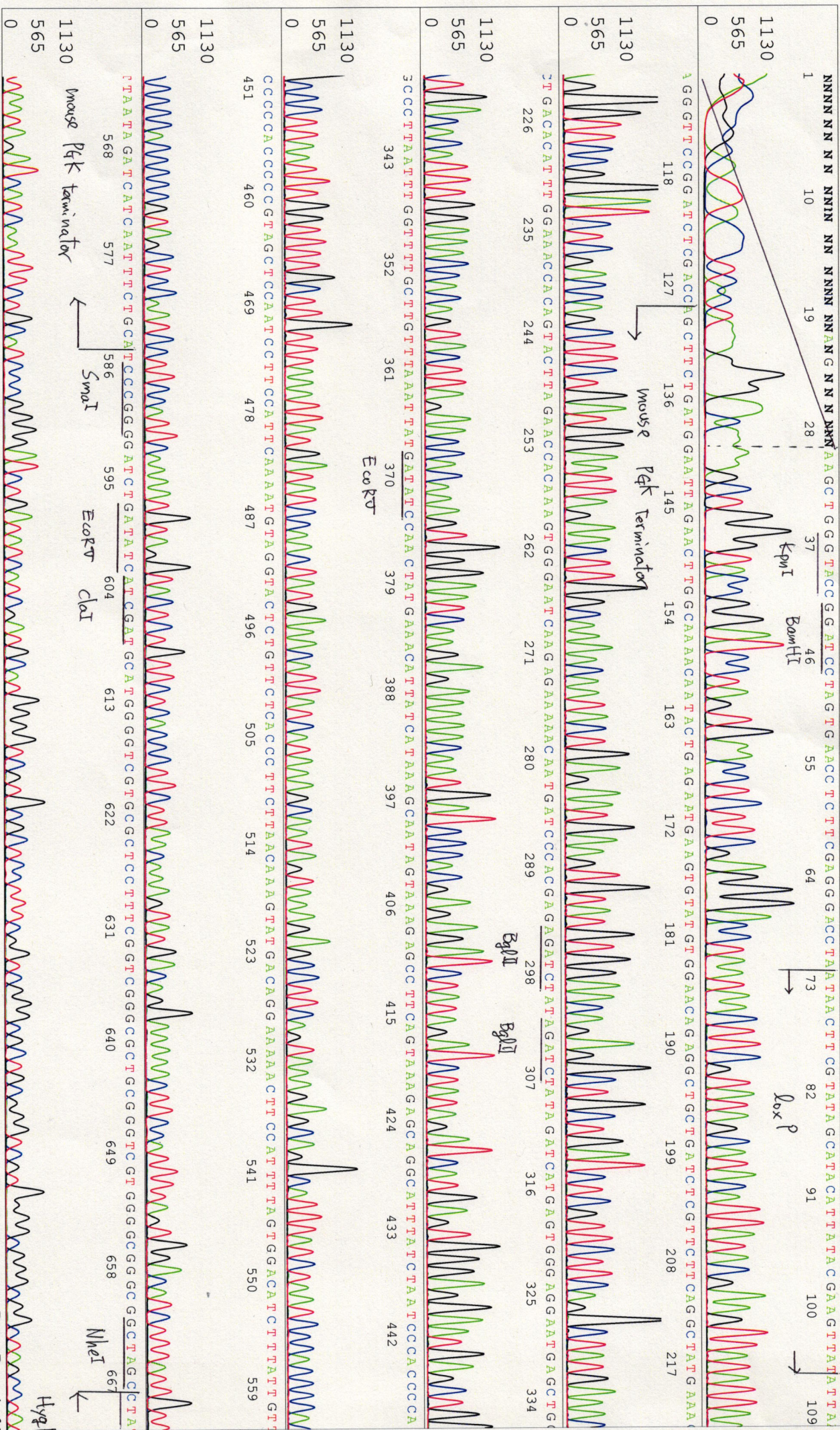
5' CAGGAACAGCTATGAC 3'

D03070A20_A6B8_1_M13R

KB_3500_POP7_BDTV3.mob

Pls 1371 to 12980 PK1 Loc:1348

Version 6.0 HiSQV Bases: 921



Printed on: Wed Mar 01, 2023 02:00PM, JST

Electropherogram Data Page 1 of 2

S/N G:56 A:52 T:50 C:42

D03070A20_A6B8_1_PGK-N-rev

KB_3500_POP7_BDTV3.mob

Pts 1337 to 13117 Pk1 Loc:1314

Version 6.0 HiSQV Bases: 886

Mar 03, 2016 10:30AM, JST

Mar 03, 2016 10:56AM, JST

Spacing: 11.59 Pts/Panel1350

Plate Name: 20160303 kitaku

KB 1.4.1.8 Cap:21

TACGGGGCCCGTCCGANGGGAAGTTGGTGCCNNNNCAGCTTCACCTGTAGATGACTCGGCCGTCCTGCANGGAGGAGTCCCTGGGTCACCGTCACCGACCGCCGCTCCGA

1124 mCherry 2 ←

AGTTCTNANNNCTCCCNATTGAAAGCCCTCGGGGANNGNAGCTTCNAGTAGTCNNGGANGTNNGCCGGNNGCTTCACCGTNCCNNANNNNACATGANNN

1124

562

GGGGNAGGNNGNCCANGNNNNGNNGNCCNTGCNNNNCTTCNNGNANGTCCNNGGTGNCNNNNNNGCCNGNCCNNNANNNNNNNCNN

1124

562

NANNNNAACTNNNNNNNNNAANNNAANNNNCTNNNNNGCACNNNAANN

1124

562

NN

1124

562

NN

1124

562

0

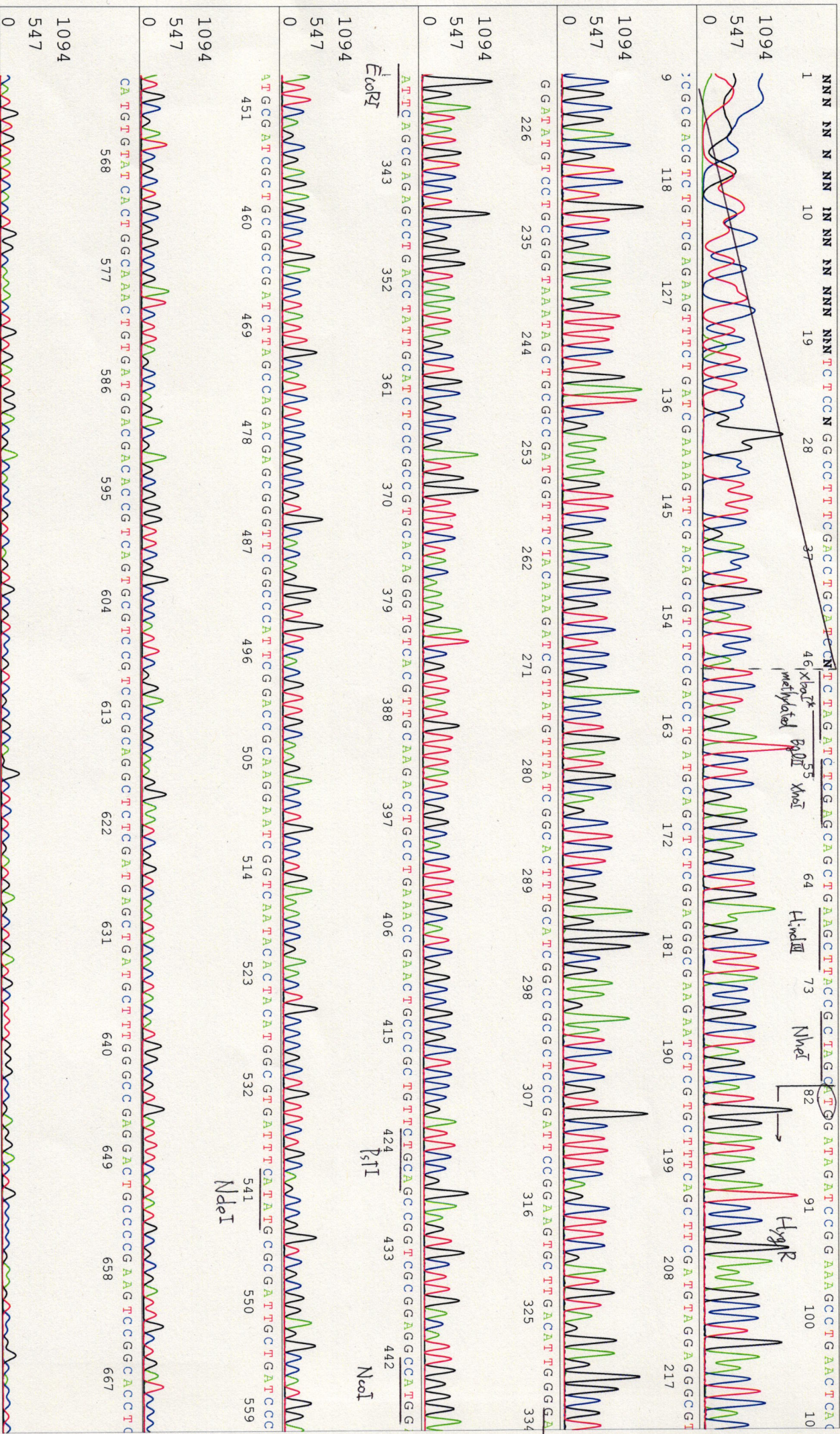
S/N G:756 A:448 T:528 C:637

KB.bcp

KB 1.4.1.8 Cap:5

primer name **D** :PGKpro_F

5'ATTCTGCACCGCTTCAAAAG 3'



S/N G:756 A:448 T:528 C:637
 KB.bcp
 KB 1.4.1.8 Cap:5

