

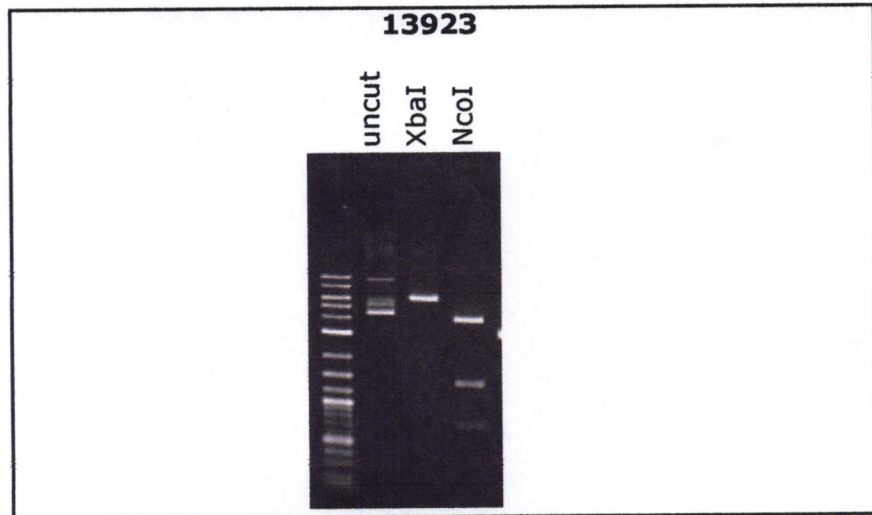
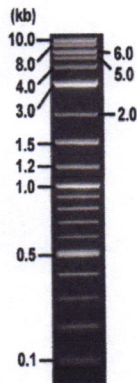


RIKEN DNA BANK

clone name : **pMK280 (mCherry2-NeoR)**

- Clone ID : RDB_13923
- Lot : 13923_A6B8
- DNA Concentration : 25 nanogram/microliter
- Volume : 40 microliter
- Form : DNA solution in TE buffer
- Host : DH5 alpha
- Culture : LB medium
- Antibiotics : 100 microgram/ml Ampicillin
- Purification : QIAGEN QIAprep Spin Miniprep kit
- Digestion by restriction enzyme

1 kb Plus DNA Ladder
(NEB#N3200L),
250 ng/well



Electrophoresis : 100 nanogram DNA per lane ; 1% agarose gel , 1 x TAE Buffer

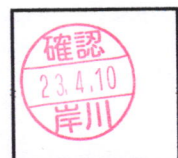
Restriction enzyme	Expected size of fragment
<u>XbaI</u>	<u>5.9</u> kbp
<u>NcoI</u>	<u>0.7, 1.4, 3.9</u> kbp
_____	_____ kbp
_____	_____ kbp

● Confirmation of the insertion sequence

Please be sure to check our sequence analysis results before your request.

Sequence name	Primer ID	Primer name	Confirmed feature
Sequence - A	Pr0410	M13_-40	T7 pro,insert 5' Linker (mCherry2 5')
Sequence - B	Pr0160	M13R	insert 3'(TK pA,NeoR_KanR 3')
Sequence - C	Pr0109	SV40polyA-R	insert mid(mCherry2 3')
Sequence - D	Pr0154	SV40pro_F_V2	insert mid(NeoR_KanR 5')
Sequence - E	-	-	-
Sequence - F	-	-	-
Sequence - G	-	-	-
Sequence - H	-	-	-

APPROVED BY :



S/N G:1839 A:1621 T:1173 C:1995 primer name A :M13_-40

D03070A07_A6B8_1_M13(-40)

Mar 02, 2016 10:43AM, JST

KB.bcp KB_3500_POP7_BDTv3.mob

Pis 1365 to 12989 Pk1 Loc:1342

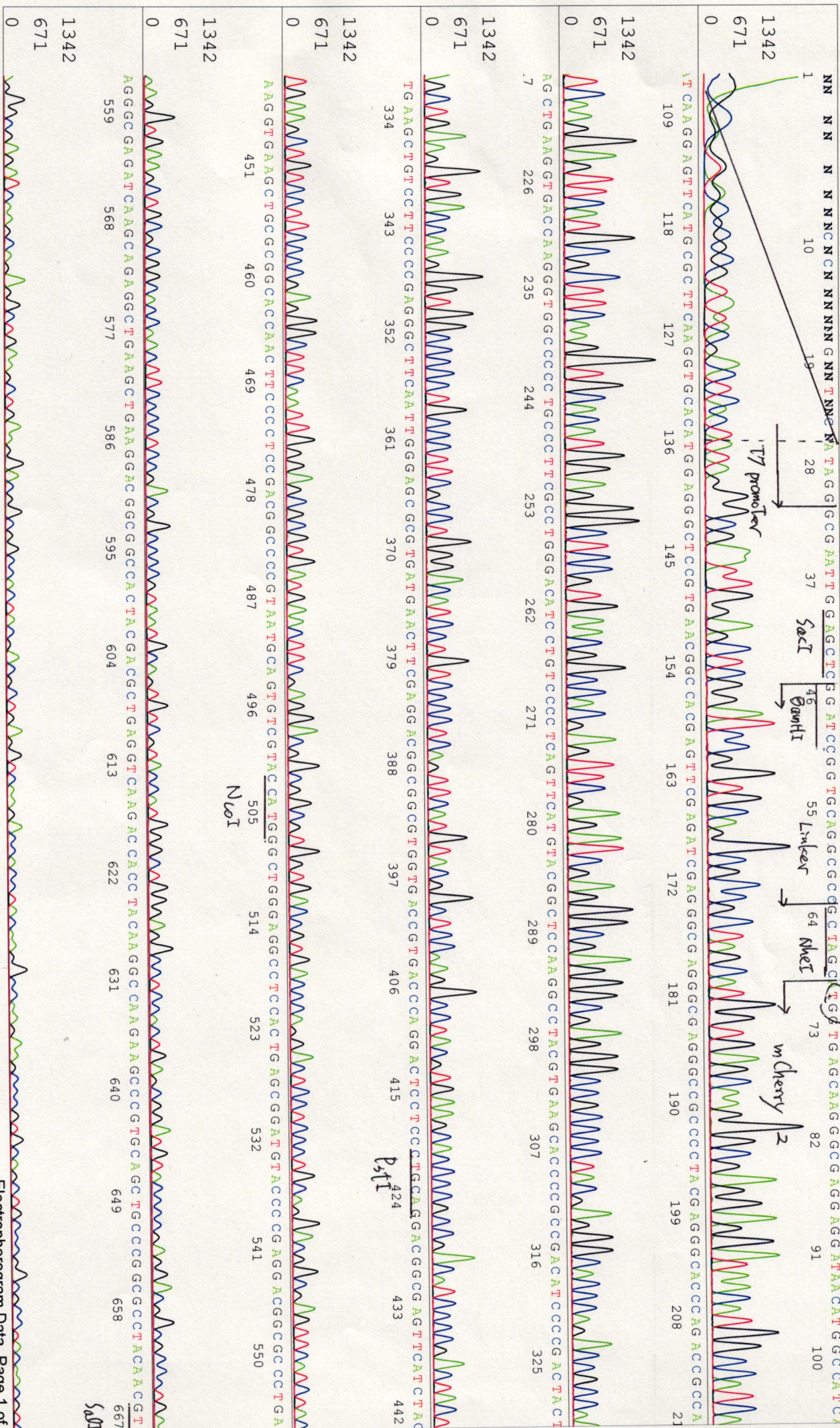
Mar 02, 2016 11:09AM, JST

KB 1.4.1.8 Cap:11

5'GTTTCCAGTCAACGACGTTGTA3'

Version 6.0 HiSQV Bases: 951

Plate Name: 20160302 Biomass



5001
GACATCAAAGTGGGACATCCCTTCCCAACAAGGACTACACNNNNNNNNAAACAAGTAAACAACCGCCAGGGCCGCCACTCCAACGGCGCATGGACGACTGTACAACTAA
676 685 694 703 712 721 730 739 748 757 766 775

1342
671

CTAGATAACTGATCATTAATCAAGCATTACCAATTTGTAGAGGTTTACTTGTCTTAAAAAACCCTCCCAACCCTCCCNNGAACCTGAAACATAAAAAAGAAAGTAA
784 793 802 811 820 829 838 847 856 865 874 883

1342
671

TGNTGNTNACTTTGNTTATTGNANCTTATAATGNNTACNANTAAAGCAA TAGCA TNNCAAAANTTNNNAAA TNNNCATTTTNNCACTGNNNNCNANTNTGGNTN
892 901 910 919 928 937 946 955 964 973 982 991

1342
671

NNNNNANCTCNTNNNGNNNTTNNNNANNNNNNNNNNNNTNNNNNNNNNNNNNNNNNNNNNNNNNNNNNN
1000 1009 1018 1027 1036 1045 1054 1063 1072 1081

1342
671

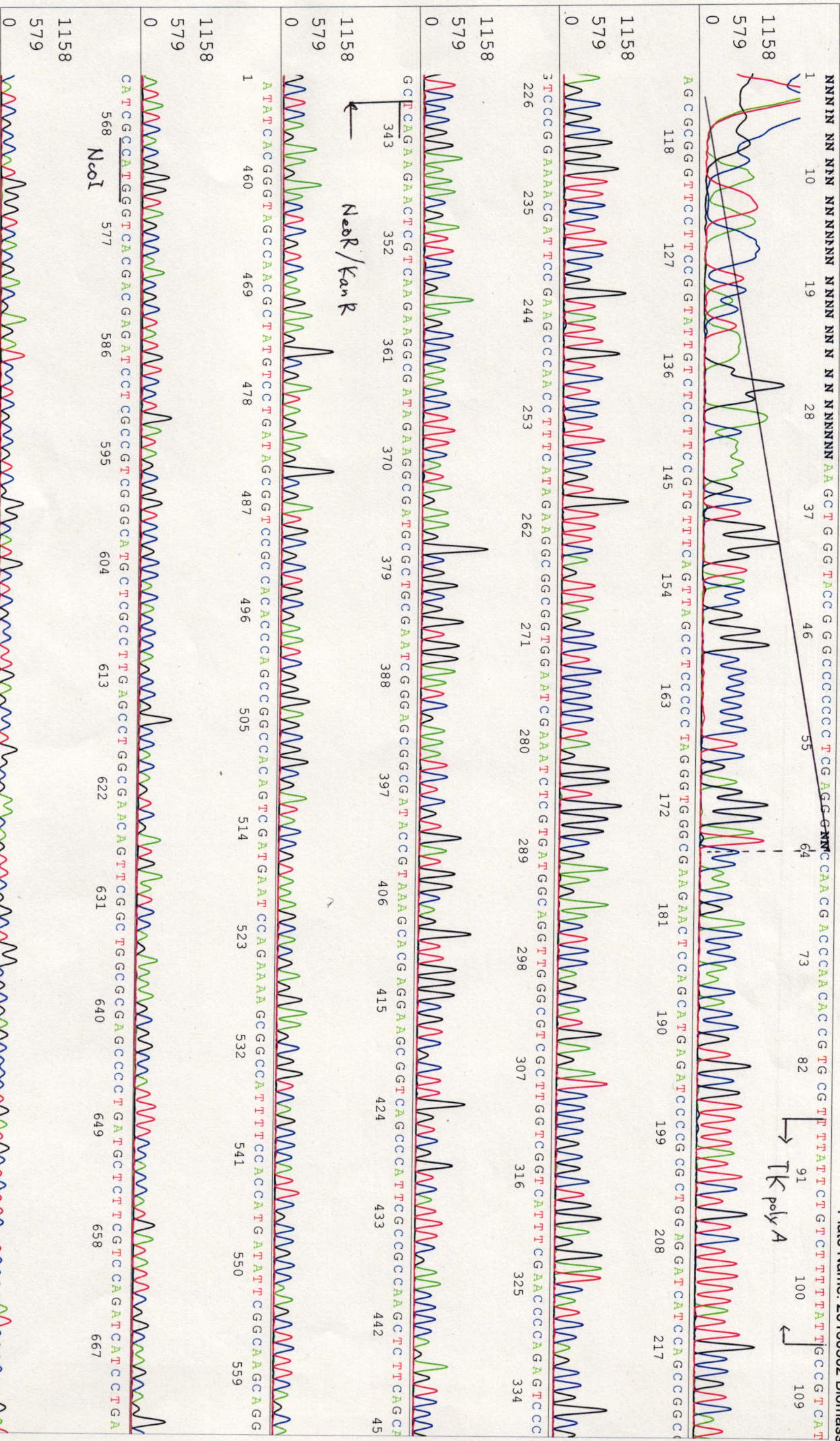
NN
1090 1099 1108 1117 1126 1135

1342
671

NN
1144 1153

1342
671

NN
1144 1153



T C G A C C A A G A C C C G G C T T C C C A T C C C G A G T A C G T G C T C C G A T G C C G A T G T T C C G C T T G G T G G T C G A A T G G G G A G G T A G C C G G A T C A A G C C G T A T G C A G C C G C C G A T T G C A

1158 579 0 676 685 694 703 712 721 730 739 748 757 766 775

T C A N C C A T G A T G G A T T A C T T C C T C G G C A G G A G C A A N G T G A G A T G A C A G G A G A T C C T G C C C N N G C A C T T C G C C N N A T A N C A G C N A G T C C C T C C C G C T C N T G A N

1158 579 0 784 793 802 811 820 829 838 847 856 865 874 883

A A C G T C N A G I N N N A G C T G C N N A A G G A A N G C C C G T C G N G G N C N N G C C A C G A T N N N C N G C C T G C C T N G T C T N G N N T T T N A T T C N N G G N N C C N N N N N N N G A N

1158 579 0 892 901 910 919 928 937 946 955 964 973 982 991

T C T T N N N N A A A A A A N A N N N G G N N N N C C N G N N C N N A N N N C C N G N N N N N N N A N N N N N N N N N N N N N T T N

I N

1158 579 0 1000 1009 1018 1027 1036 1045 1054 1063 1072 1081 1091

N N

1158 579 0 1099 1108 1117 1126 1135 1144 1153 1162

N N

primer name C : SV40polyA-R
5' CATTTAATGTTTCAGGTTTC 3'

D03070A07_A6B8_1_SV40polyA-R_G04_19

D03070A07_A6B8_1_SV40polyA-R

KB_3500_POP7_BDTv3.mob

Pis 1365 to 13199 PK1 Loc:1342

Version 6.0 HiSQV Bases: 905

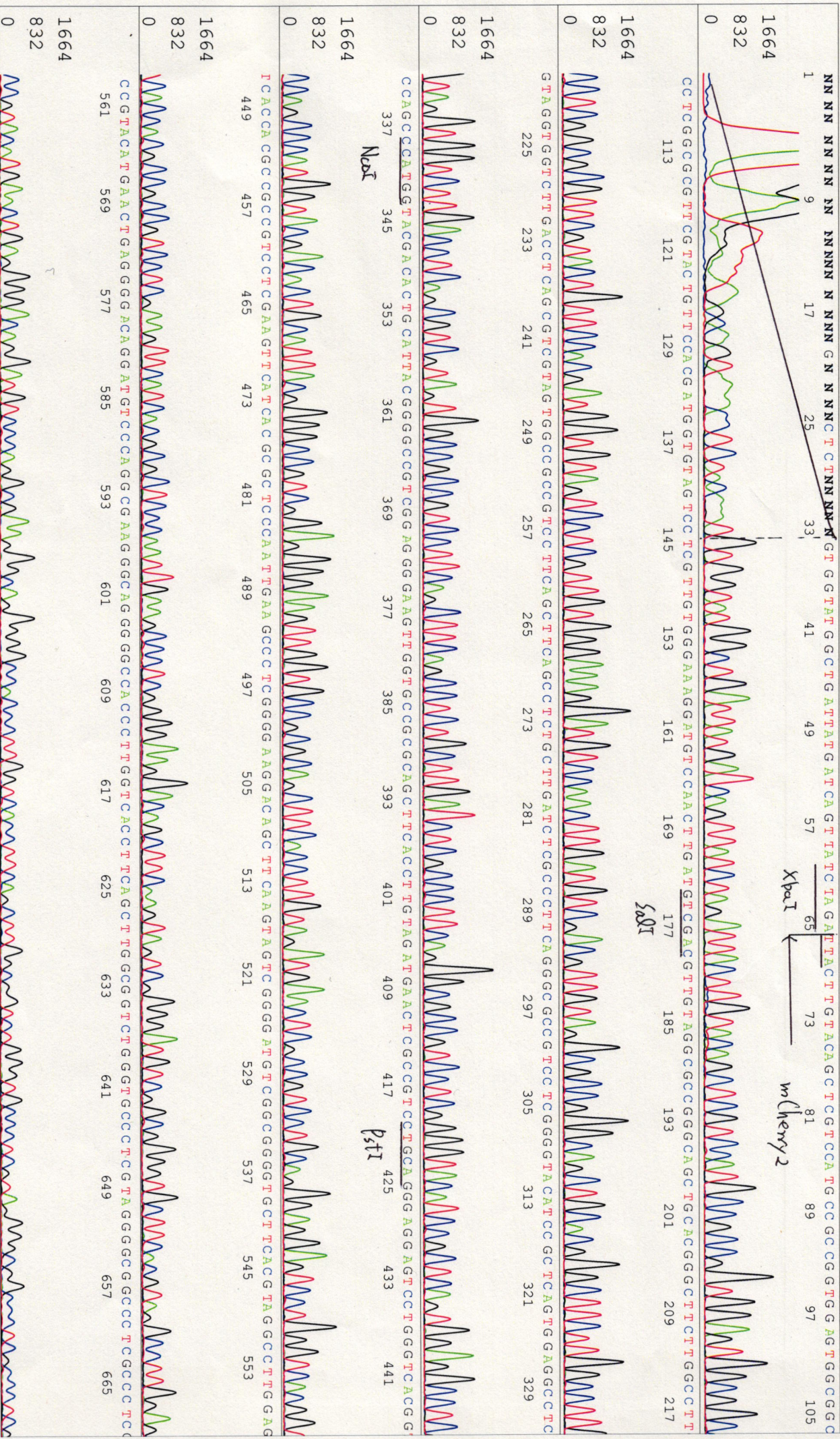
Inst Model/Name 3500/3500 Instrument

Mar 03,2016 10:30AM, JST

Mar 03,2016 10:56AM, JST

Spacing: 11.62 Pts/Panel1350

Plate Name: 20160303 Kitaku



S/N G:33 A:28 T:18 C:19

D03070A07_A6B8_1_SV40polyA-R

Mar 03, 2016 10:30AM, JST

KB.bcp

KB_3500_POP7_BDTV3.mob

Mar 03, 2016 10:56AM, JST

KB 1.4.1.8 Cap:19

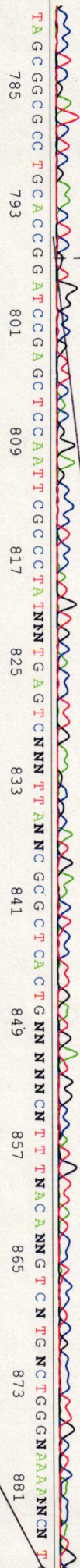
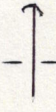
Pls 1365 to 13199 PK1 Loc:1342

Spacing:11.62 Pls/Panel1350

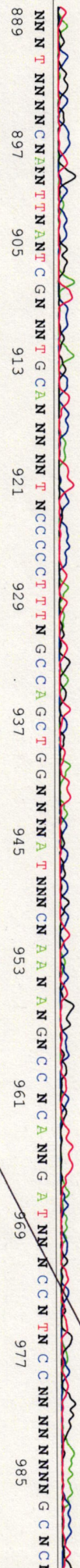
Version 6.0 HiSQV Bases: 905

3000 673 681 689 697 705 713 721 729 737 745 753 761 769 777

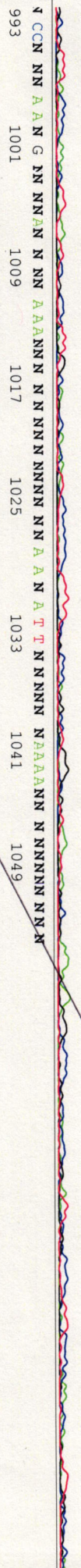
1664 mSherry 2



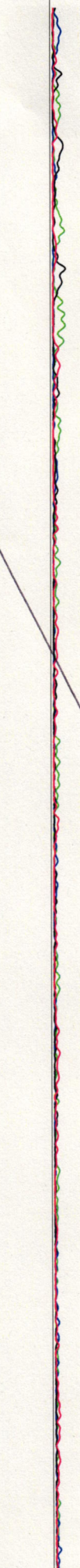
1664 832



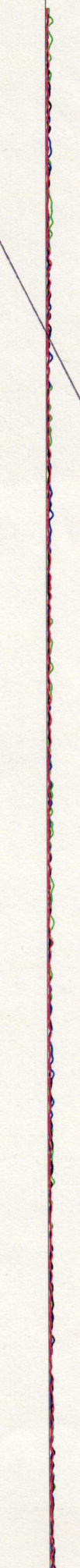
1664 832



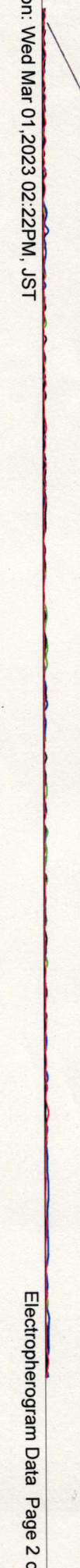
1664 832



1664 832



1664 832



SN G:108 A:101 T:87 C:125

D03070A07_A6B8_1_SV40pro_F_V2

KB 3500_POP7_BDTV3.mob

KB bcp

primer name : SV40pro_F_V2

Pis 1450 to 12893 PK1 Loc: 1427

KB 1.4:1.8 Cap:4

5- TCGGCCTCTGAGCTAATTC -3'

Version 6.0 HiSQV Bases: 932

Plate Name: 20160314 Kitaku



TTTCTGGATTCAATCCGACTGTGGCCCGCTGGGTGTGGCGANCCGCTTACAGGACATAAGCGTGTGGCTTACCCCGTGAATTTGCTGAAGAGCTTGGCCGGCAATGGCTGAC
676 685 694 703 712 721 730 739 748 757 766 775

Near/KaR

