

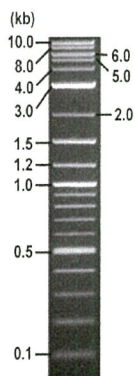


**RIKEN DNA BANK**

clone name : p3xFLAG-CMV-14\_mLPH

- Clone ID : RDB\_13240
- Lot : 13240\_B2Bh
- DNA Concentration : 25 nanogram/microliter
- Volume : 40 microliter
- Form : DNA solution in TE buffer
- Host : DH5 alpha
- Culture : LB medium
- Antibiotics : 100 microgram/ml Ampicillin
- Purification : QIAGEN QIAprep Spin Miniprep kit
- Digestion by restriction enzyme

1 kb Plus DNA Ladder  
(NEB#N3200L),  
250 ng/well



Electrophoresis : 100 nanogram DNA per lane ; 1% agarose gel , 1 x TAE Buffer

Restriction enzyme	Expected size of fragment
<b>MluI</b>	<b>12.1</b> kbp
<b>XbaI</b>	<b>12.1</b> kbp
<b>MluI+XbaI</b>	<b>8.1, 4.0</b> kbp
	kbp

● Confirmation of the insertion sequence

Please be sure to check our sequence analysis results before your request.

Sequence name	Primer ID	Primer name	Confirmed feature
Sequence - A	Pr0016	CMV_Forward	CMV pro,insert 5'
Sequence - B	Pr0350	hGHPolyA-R	hGH pA,3xFLAG,insert 3'
Sequence - C	Pr0731	SV40pro_ori_F	SV40 pro_ori,NeoR
Sequence - D	-	-	-
Sequence - E	-	-	-
Sequence - F	-	-	-
Sequence - G	-	-	-
Sequence - H	-	-	-

APPROVED BY :

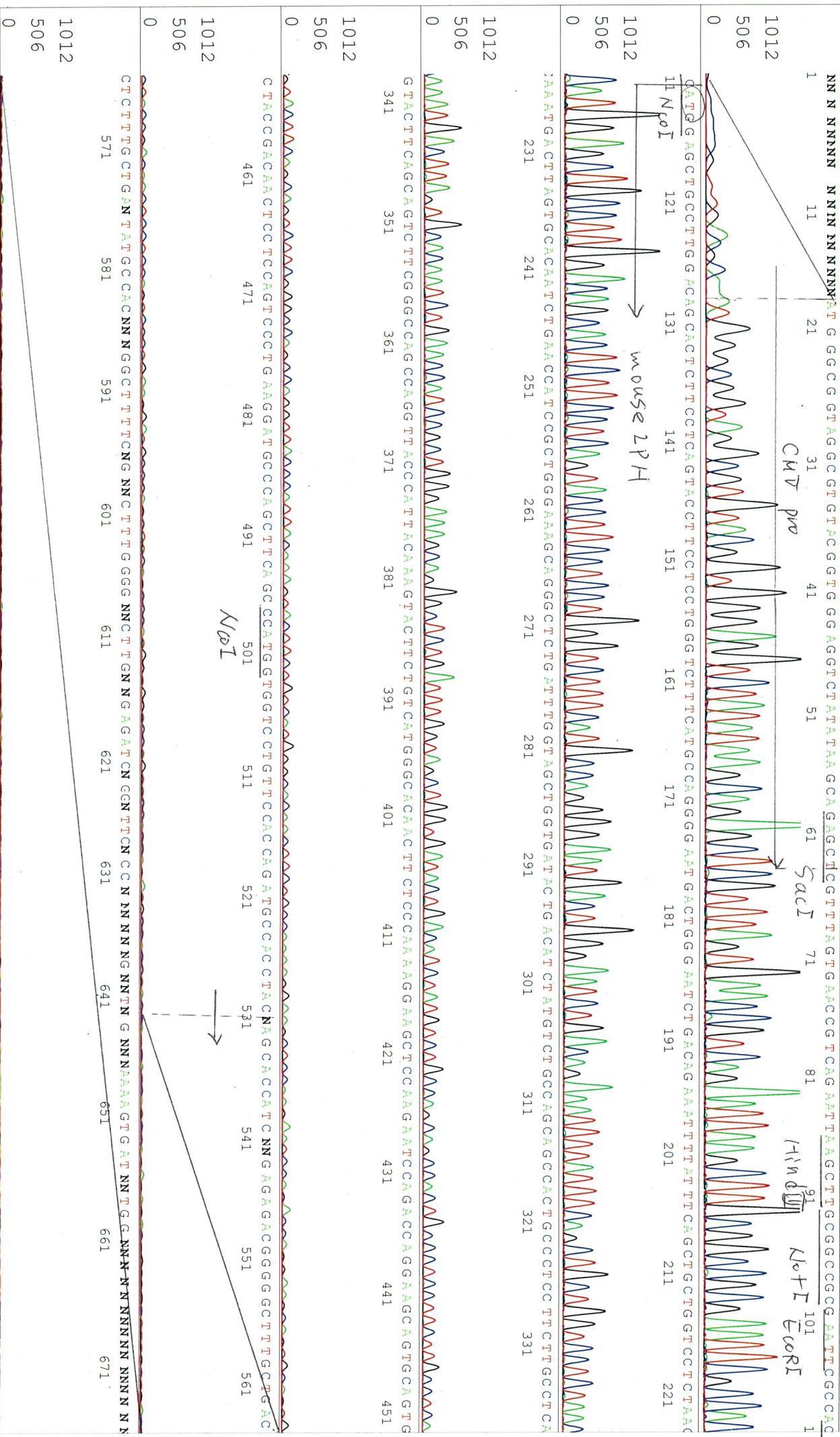


S/N G:279 A:226 T:185 C:202 Primer name A : CMV Forward

KB.bcp Cap:3 5'-GCACCAAAATCAACGGGACTT-3'

KB 1.4.1.8

KB 1.4.1.8





SN G:176 A:79 T:69 C:74 Primer name C : SV40pro\_ori\_F

13240\_13240\_B2Bh\_1\_SV40pro\_ori\_F  
KB\_3500\_POP7\_BDTV3.mob  
Pis 1823 to 8707 PK1 Loc:1791

Mar 08,2022 10:31AM, JST  
Mar 08,2022 10:48AM, JST  
Spacing:10.87 Pts/Panel1350

KB.bcp 5'-cctcttcccaatcgggg-3'  
KB 1.4.1.8 Cap:9

Version 6.0 HISQV Bases: 624

Plate Name: 20220308\_MGE

