

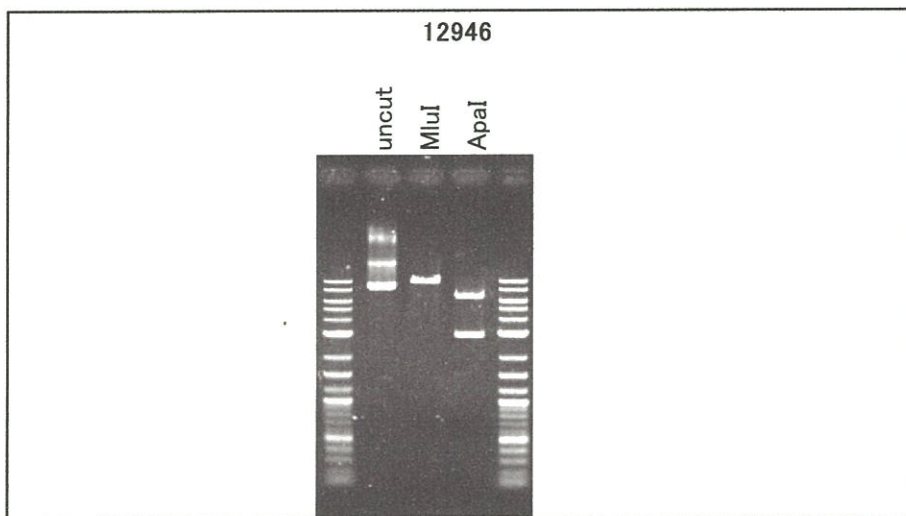
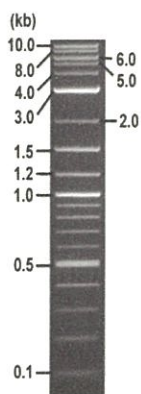


**RIKEN DNA BANK**

clone name : CS-hp53-shRNA-CG

- Clone ID : RDB \_ 12946
- Lot : 12946 \_ A4K5
- DNA Concentration : 25 nanogram/microliter
- Volume : 40 microliter
- Form : DNA solution in TE buffer
- Host : DH5 alpha
- Culture : LB medium
- Antibiotics : 100 microgram/ml Ampicillin
- Purification : QIAGEN QIAprep Spin Miniprep kit
- Digestion by restriction enzyme

2-Log DNA Ladder  
(NEB#N3200L),  
125 ng/well



Electrophoresis : 92 nanogram DNA per lane ; 1% agarose gel , 1 x TAE Buffer

Restriction enzyme	Expected size of fragment
<u>MluI</u>	<u>9.6</u> kbp
<u>ApaI</u>	<u>6.7, 3.0</u> kbp
	kbp
	kbp
	kbp

● Confirmation of the insertion sequence

Sequence name	Primer name	Sequence name	Primer name
Sequence - A	cPPT+CTS_v2_F	Sequence - E	SV40pro_F
Sequence - B	PRE_rev	Sequence - F	-
Sequence - C	HIVgp_R1	Sequence - G	-
Sequence - D	BGH_rev2	Sequence - H	-



APPROVED BY :

S/N G:30 A:46 T:43 C:52

primer name A : cpPT+CTS\_v2\_F

12946\_12946\_A4K5\_2\_cpPT+CTS\_v2\_F

Dec 10,2015 10:00AM, JST

KB bcp

5- AGTGCAGGGGAAAGAATAG -3'

KB\_3500\_POP7\_BDTV3.mob

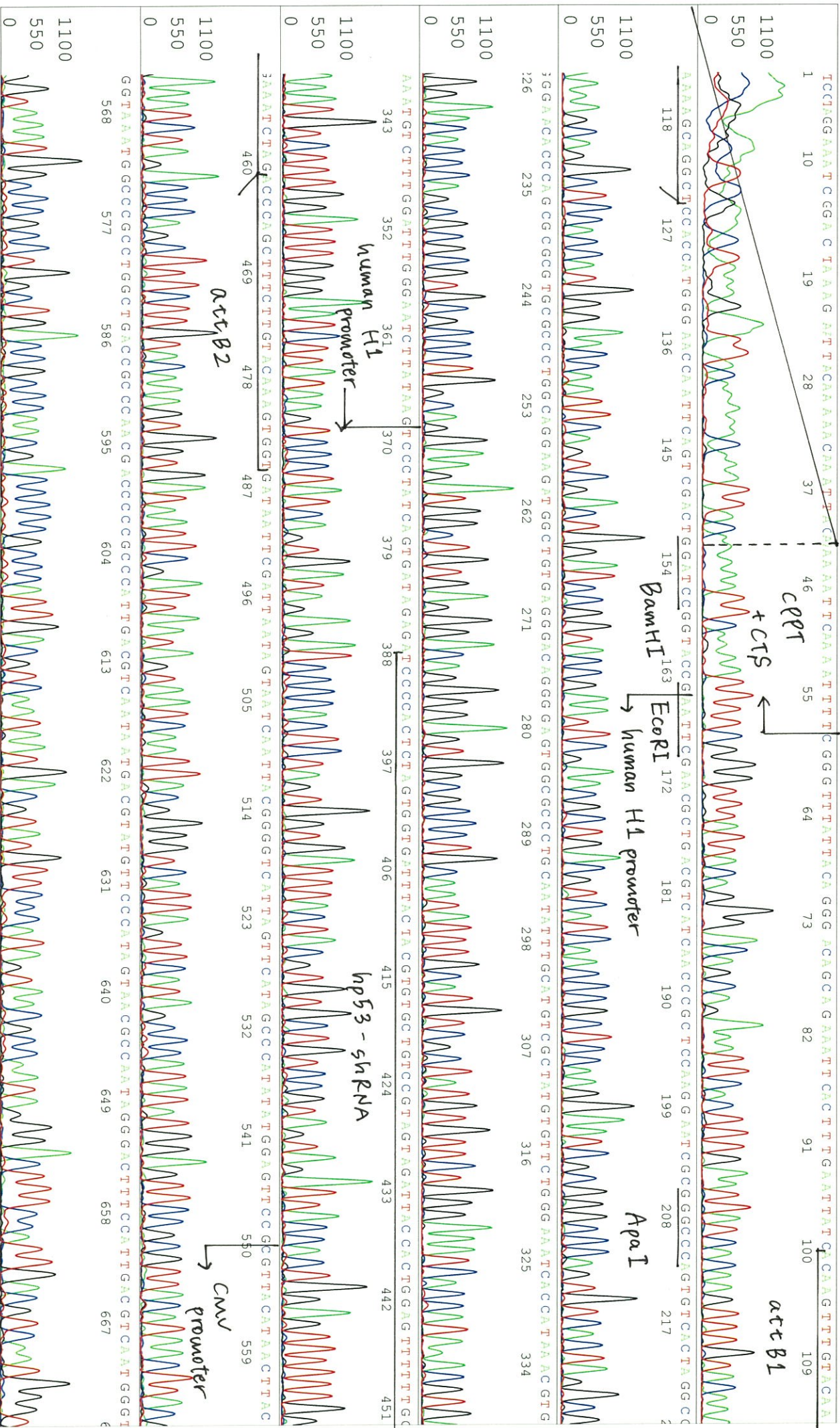
Dec 10,2015 10:26AM, JST

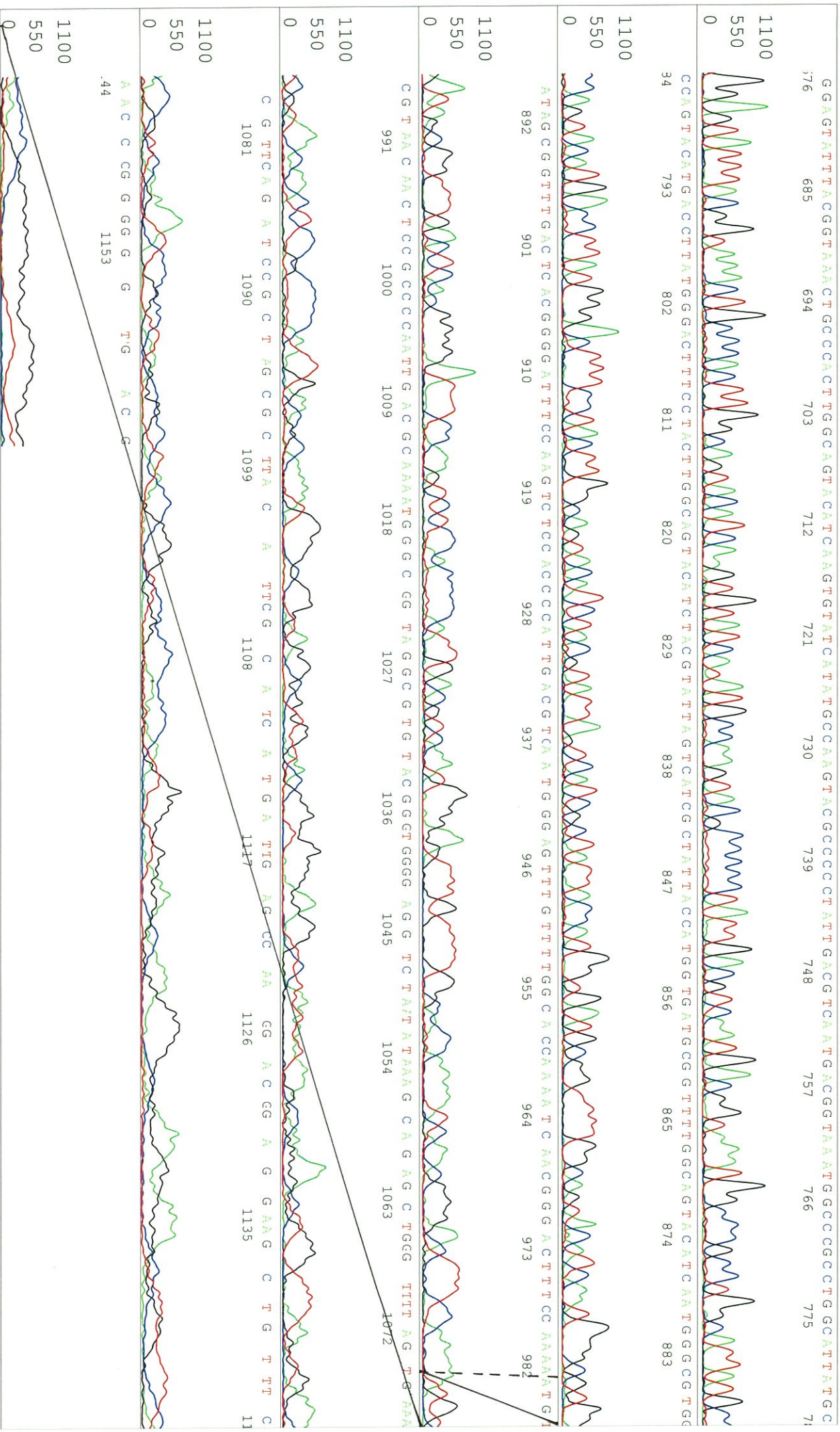
KB 1.4.1.8 Cap:6

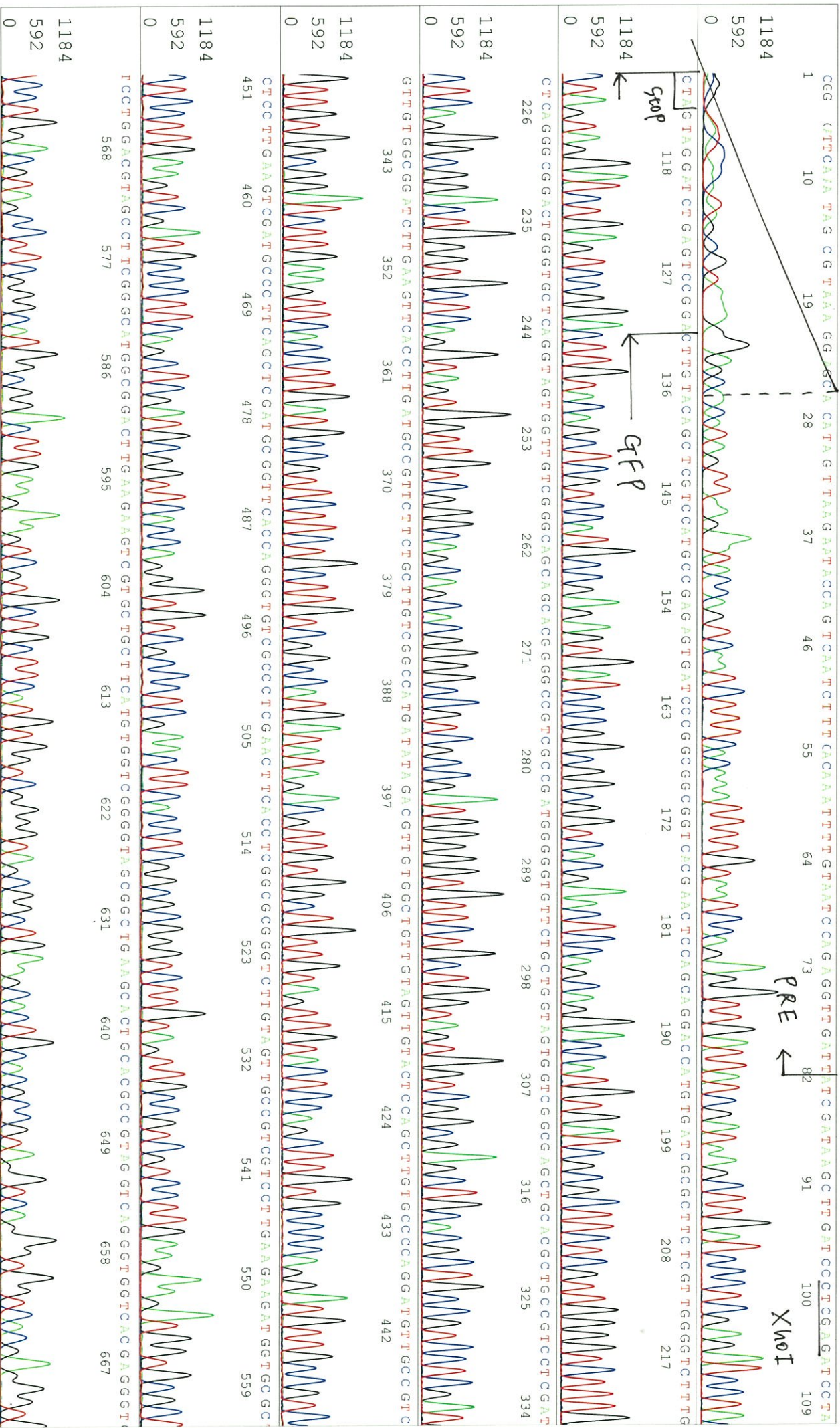
Pls 1414 to 12900 Pk1 Loc:1391

Version 6.0 HISQV Bases: 1012

Spacing: 11.3 Pts/Panel1350  
Plate Name: 20151210\_bank







S/N G:387 A:321 T:425 C:517

12946\_12946\_A4K5\_2\_PRE\_rev

KB\_3500\_POP7\_BDTV3.mob

Pis 1410 to 13087 PK1 Loc:1387

Version 6.0 HiSQV Bases: 969

Dec 10,2015 10:00AM, JST

Dec 10,2015 10:26AM, JST

Spacing:1.57 Pts/Panel1350

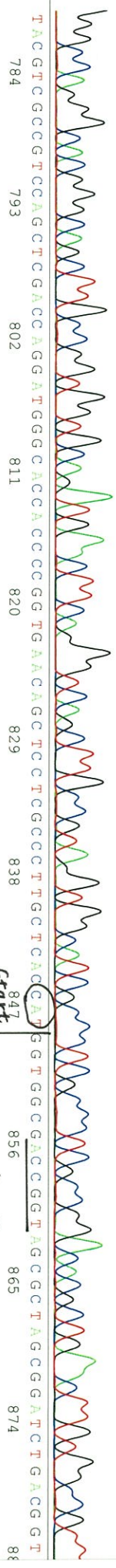
Plate Name: 20151210\_bank

KB 1.4.1.8 Cap:9

3GGCCAGGGGACGGGGAGCTTGCCCGGTGGCGATGAACTTCAAGGTCAGCTTGGCCGTAGGTGGCACTCCGCCCTCCGCCCTCCGCCGGAACCGCTGAACTTGGCCGTT

1184

592



GFP start

Age I

1184

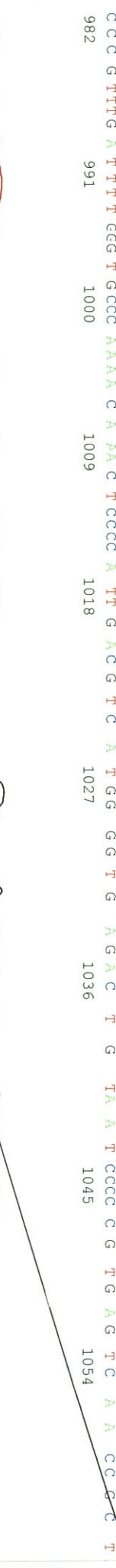
592



CMV promoter

1184

592



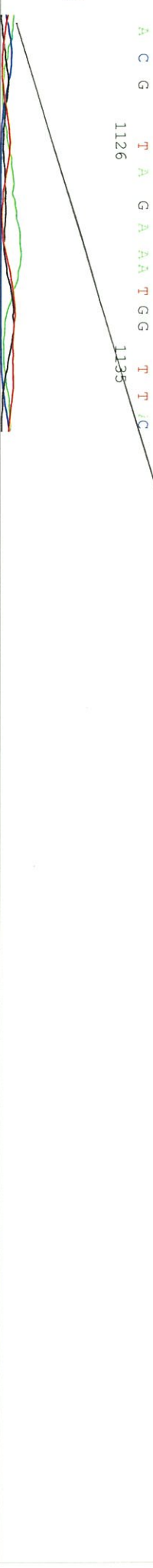
1184

592



1184

592



Printed on: Thu Dec 10,2015 01:10PM, JST

S/N G:50 A:44 T:40 C:40

primer name C : HIVgp\_R1

12946\_12946\_A4K5\_HIVgp\_R1\_2

Dec 11, 2014 09:42AM, JST

KB.bcp

5-TGCTTCCTGCTGCTCCCAAG-3'

KB\_3500\_POP7\_BDTV3.mob

Dec 11, 2014 10:09AM, JST

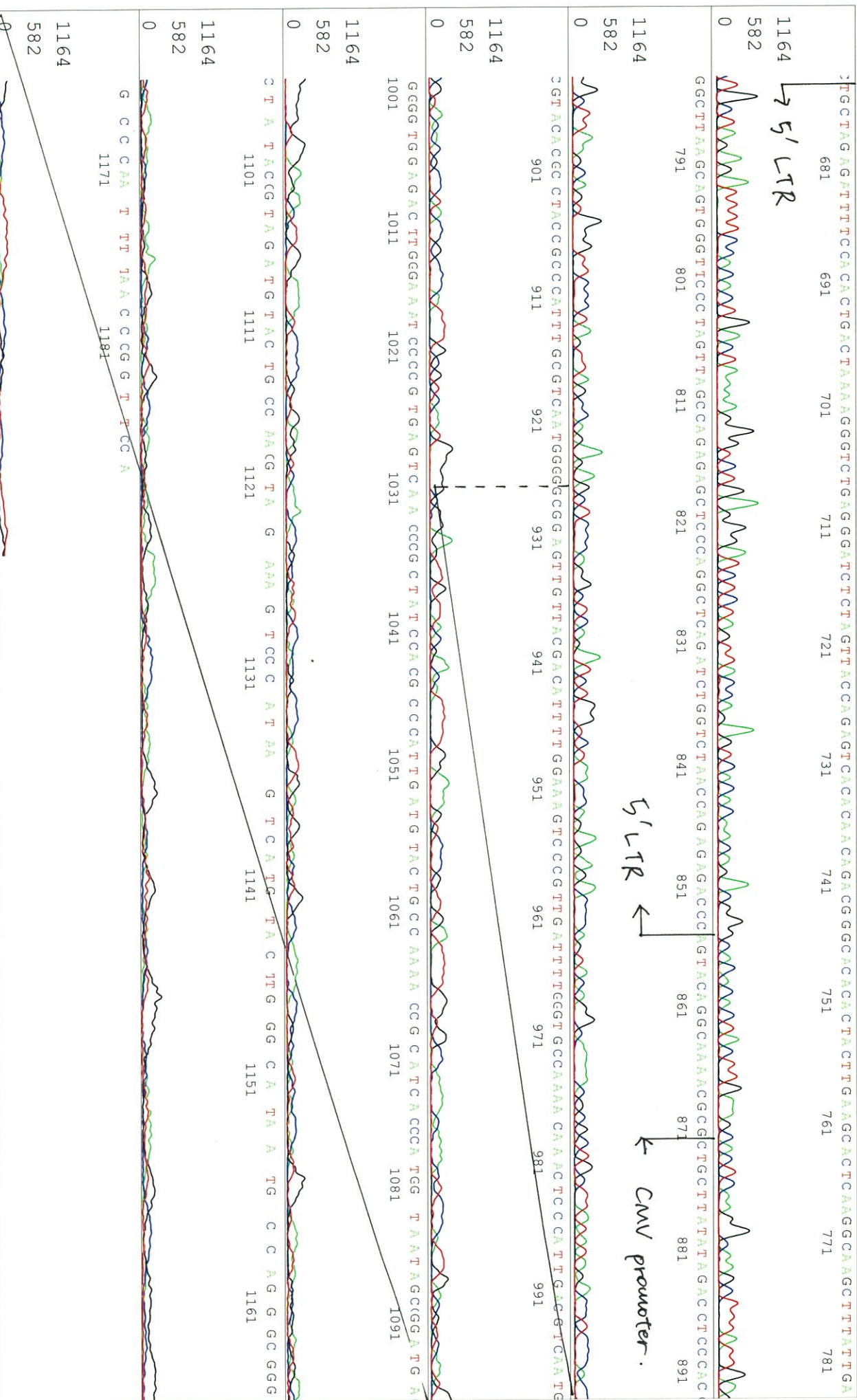
KB 1.4.1.8 Cap:1

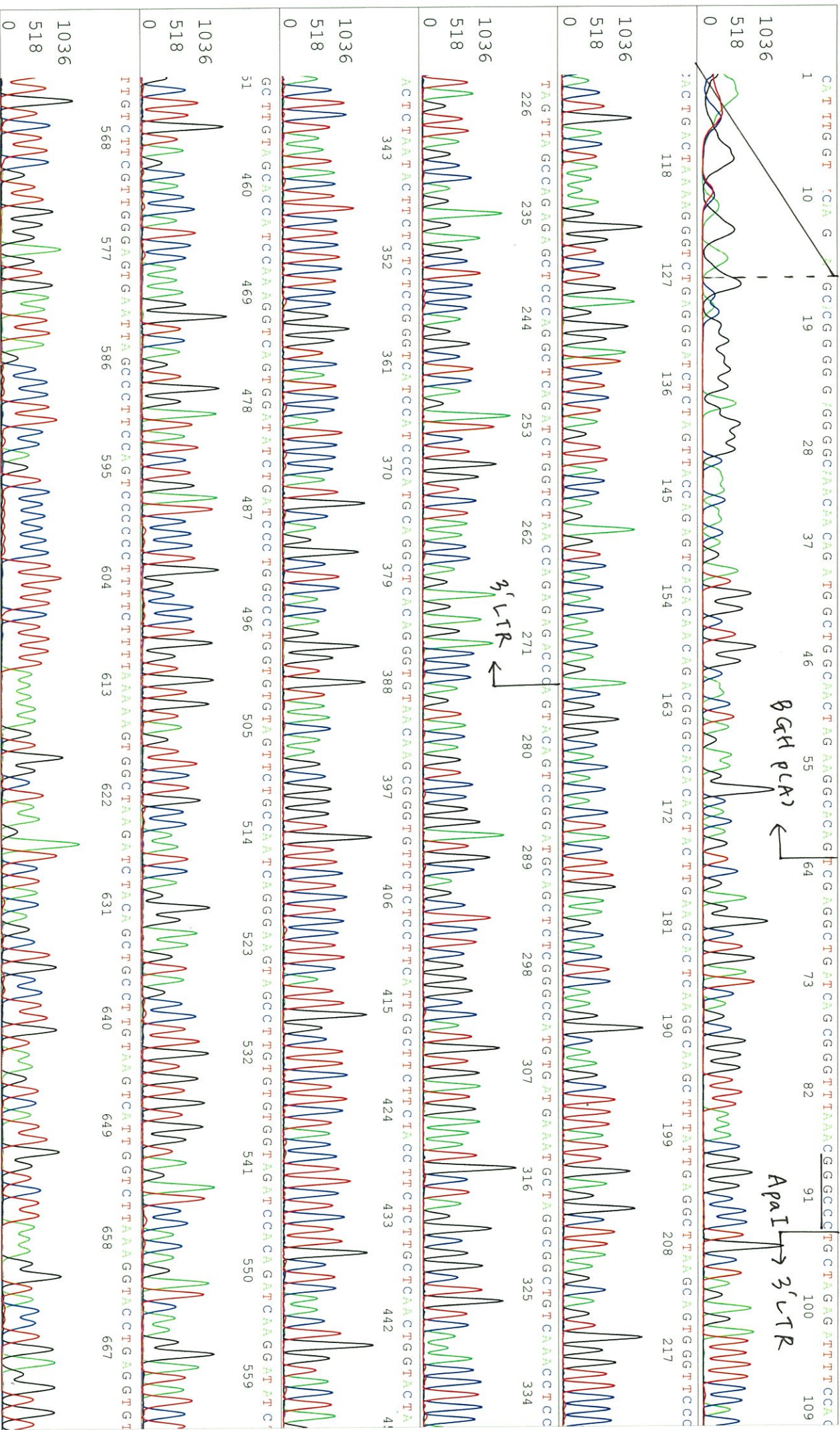
Version 5.4 HISQV Bases: 1048

Pts 1407 to 13661 PK1 Loc:1384

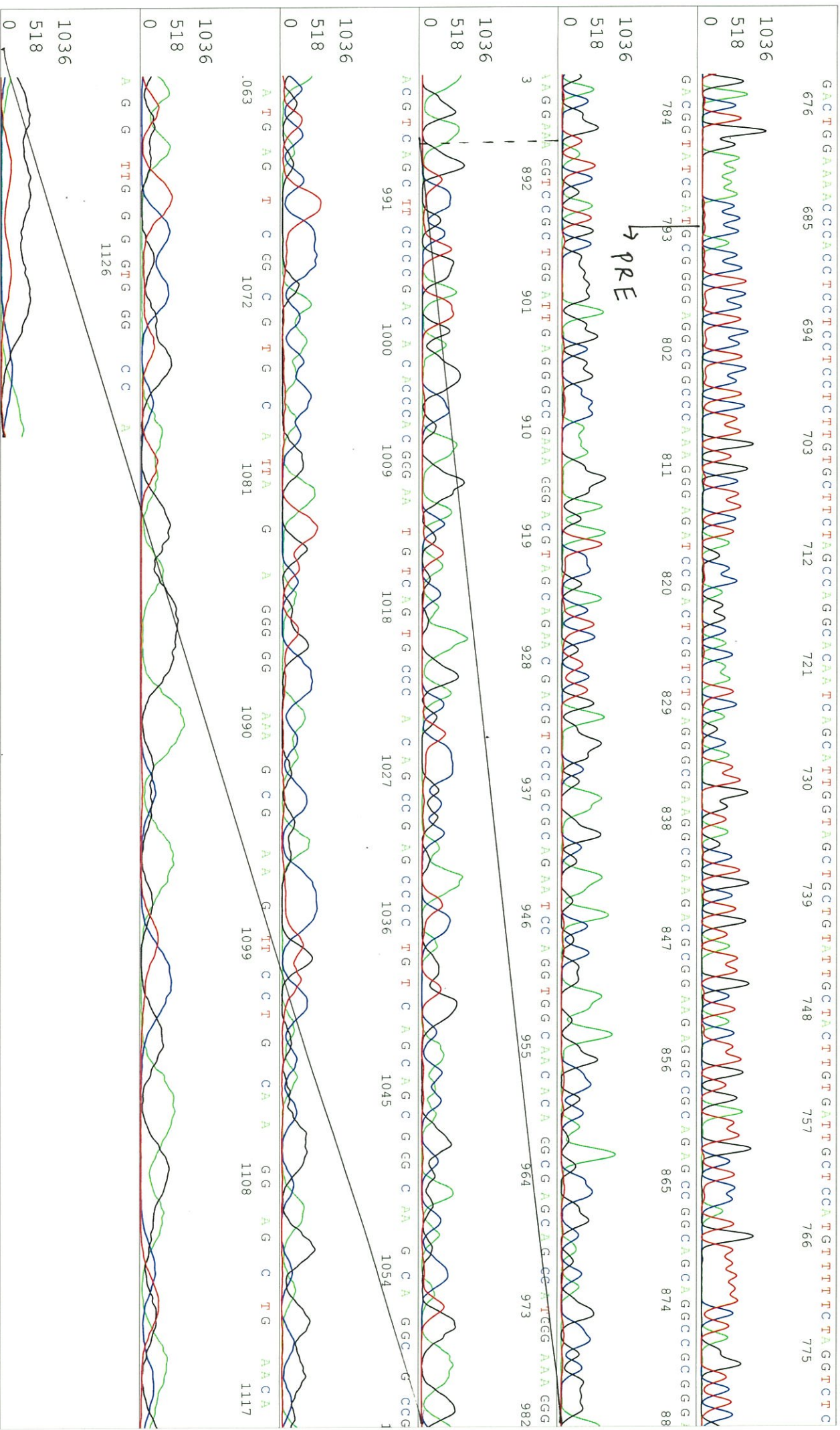
Spacing: 12.04 Pts/Panel1350











S/N G:388 A:230 T:166 C:229

primer name E : SV40pro\_F

RDB12946\_12946\_A4K5\_SV40pro\_F\_2

Dec 08, 2014 09:45AM, JST

KB.bcp

5'-TATTATTGCAGAGGCCGAGG-3'

KB\_3500\_POP7\_BDTV3.mob

Dec 08, 2014 10:12AM, JST

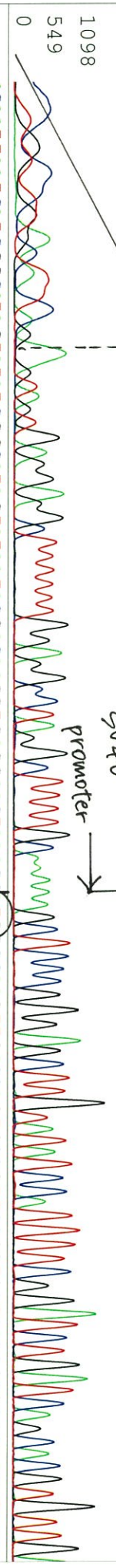
KB 1.4.1.8 Cap:24

Pts 1363 to 13899 Pk1 Loc:1340

Version 5.4 HISQV Bases: 1056

Spacing:12.19 Pts/Panel1350

1 CCC T G T C C T T G C T T T C G G A G T A G T G A G G A G C C T T T T T G G A G G C C T A G G C T C C C G G A G C T T T G T A T T C C A T T T C G G G A T C T G A T C A G C A C G T T G



ACAATTAAATCATCGGCATAGTATATCGGCATAGTATAACGACAAGGTGAGGAACATAACATGACCAGTTGACCA GTGCCGTTCCGGTGTGCTCACCGCCGCGTTCGCC  
11 21 31 41 51 61 71 81 91 101 111  
11 121 131 141 151 161 171 181 191 201 211 221  
G G A G C G G T C G A G T T C T G A C C G A C C G C C T C C G G G T T C T C C C G G A C T T C G T G G A G G A C A C T T C G C C G G T G T G T C C G G A C G A C G T A C C C T T C A T C A G C C G C G T C C A G G A

341 351 361 371 381 391 401 411 421 431 441  
C C A G G T G T G C C G G A C A C A C C C T G G C C T G G G T G T G G G T G C G C G G C C T G G A C G A G C T G T A C C C G A G T G T C G G A G G T C G T C C A C G A A C T T C C G G G A C G C C T C C G G C C G

451 461 471 481 491 501 511 521 531 541 551 561  
C C A T G A C C G A G A T C G G G C G A G C A G C C C T G G G G G G C G G A G T T C C C C G C C C G G C A A C T G C C G T G C A C T T C G T G C C G A G G A G C A G G A C T G A C A C G T G C T A C G A G A

1098 549 0  
I T T C G A T T C C A C C C C G C C T T C T A T G A A A G G T T G G G C T T C G G A A T C G T T T T C C G G A C G C C G G C T G G A T G A T C C C A G C C G G G G A T C T C A T G C T G G A G T T C T C C C C A C

571 581 591 601 611 621 631 641 651 661 671  
1098 549 0  
I T T C G A T T C C A C C C C G C C T T C T A T G A A A G G T T G G G C T T C G G A A T C G T T T T C C G G A C G C C G G C T G G A T G A T C C C A G C C G G G G A T C T C A T G C T G G A G T T C T C C C C A C

