

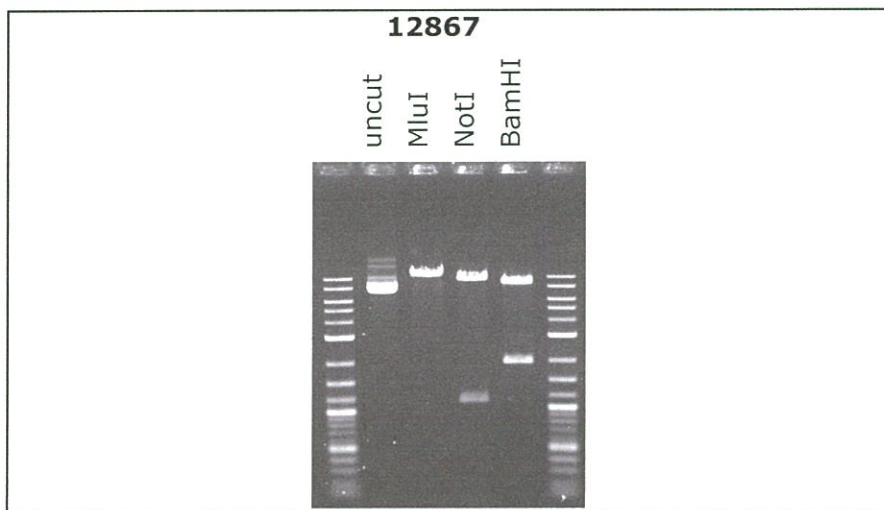
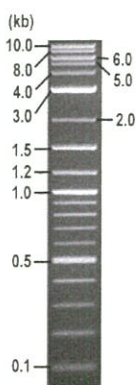


**RIKEN DNA BANK**

clone name : CS-EVBsd

- Clone ID : RDB\_12867
- Lot : 12867\_B2Ab
- DNA Concentration : 25 nanogram/microliter
- Volume : 40 microliter
- Form : DNA solution in TE buffer
- Host : NEB stable
- Culture : LB medium
- Antibiotics : 100 microgram/ml Ampicillin
- Purification : QIAGEN QIAprep Spin Miniprep kit
- Digestion by restriction enzyme

1 kb Plus DNA Ladder  
(NEB#N3200L),  
250 ng/well



Electrophoresis : 100 nanogram DNA per lane ; 1% agarose gel , 1 x TAE Buffer

Restriction enzyme	Expected size of fragment
<b>MluI</b>	<b>10.3</b> kbp
<b>NotI</b>	<b>8.1, 2.3</b> kbp
<b>BamHI</b>	<b>9.6, 0.7</b> kbp
	kbp

● Confirmation of the insertion sequence

Please be sure to check our sequence analysis results before your request.

Sequence name	Primer ID	Primer name	Confirmed feature
Sequence - A	Pr0168	EF1a-C_F	EF-1 alpha pro,Venus 5'
Sequence - B	Pr0250	PRE_rev	PRE,BSD,T2A,Venus 3'
Sequence - C	Pr0024	EF1a-N_R	EF-1 alpha pro,attB2,attB1,cPPT_CTS
Sequence - D	Pr0758	BSD_R1	BSD 5',T2A,Venus 3'
Sequence - E	Pr0016	CMV_Forward	CMV pro,5' LTR,HIV-1 psi
Sequence - F	Pr0796	RRE_F1	RRE,cPPT_CTS
Sequence - G	Pr0885	bGH_rev3	pGH pA,3' LTR
Sequence - H	Pr0731	SV40pro_ori_F	SV40 pro_ori,Zeo,SV40 pA

APPROVED BY :

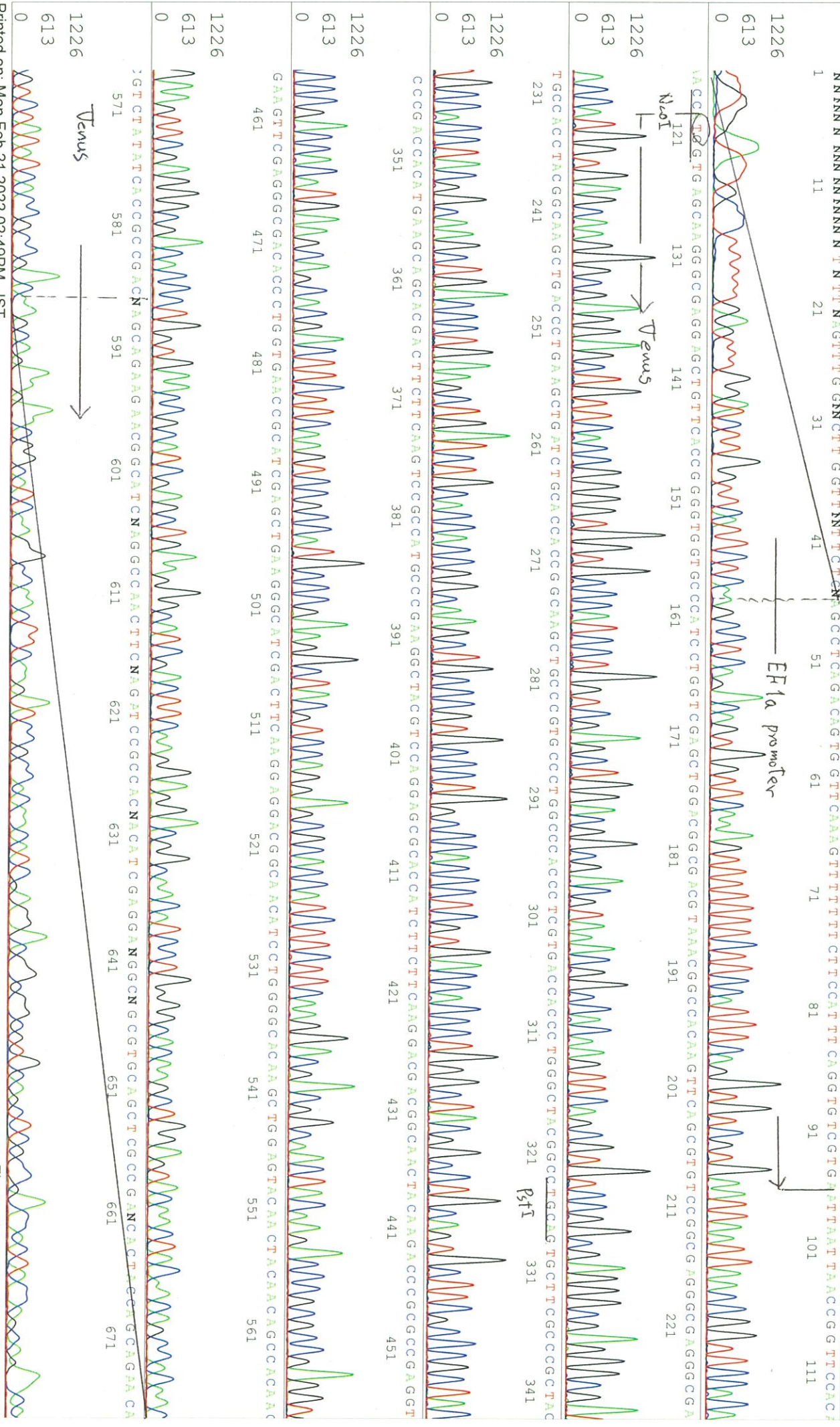


S/N G:129 A:105 T:64 C:115  
KB:bcp  
KB 1.4.1.8 Cap:4

primer name 4 : EF1a-C\_F  
5'-AGTAGGCCACGCTGGCACCTGATG-3'

12867\_12867\_B2Ab\_3\_EF1a-C\_F  
KB\_3500\_POP7\_BDTV3.mob  
Pts 1722 to 8704 Pk1 Loc:1690  
Version 6.0 HISQV Bases: 682

Feb 21, 2022 01:50PM, JST  
Feb 21, 2022 02:08PM, JST  
Spacing: 10.96 Pts/Panel1350  
Plate Name: 20220221\_dhbank



S/N G:46 A:27 T:24 C:27 Primer name 13 : PRE\_rev

12867\_12867\_B2Ab\_3\_PRE\_rev

Jan 18, 2022 01:08PM, JST

KB.bcp 5'-AGCAATAGCATGATACAAAGGC-3'

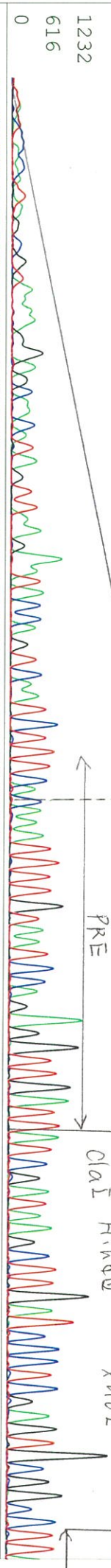
KB\_3500\_POP7\_BDTV3.mob

Jan 18, 2022 01:23PM, JST

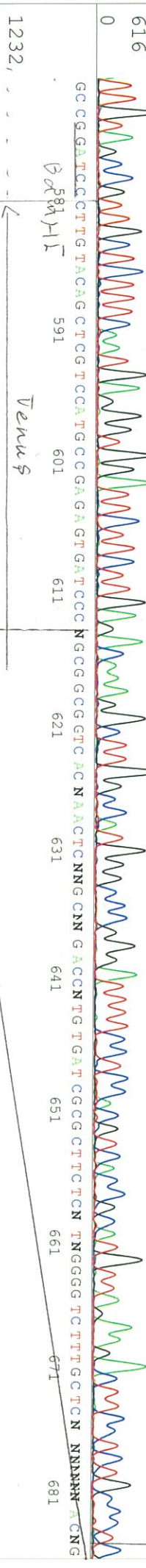
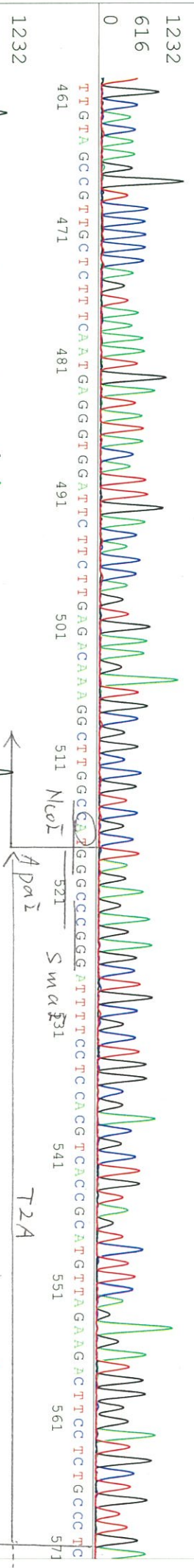
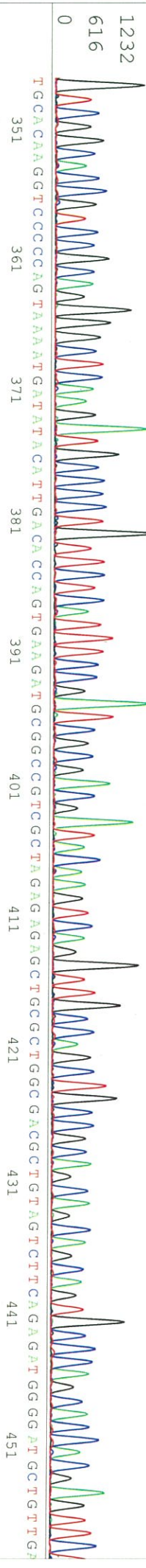
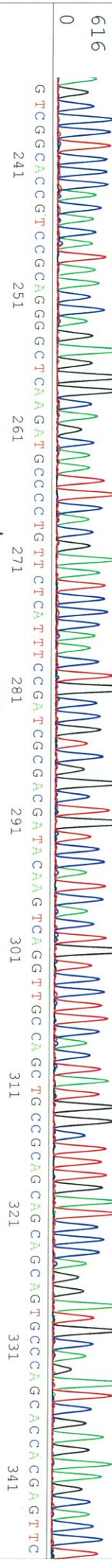
KB 1.4.1.8 Cap:4 Version 6.0 HiSeqV Bases: 658

Plate Name: 20220118\_dhbank

1 11 21 31 41 51 61 71 81 91 101 111 121 131 141 151 161 171 181 191 201 211 221 231



BSP







S/N G:106 A:40 T:51 C:47

Primer name  $\varnothing$  : BSD\_R1

12867\_12867\_B2Ab\_3\_BSD\_R1

Jan 18, 2022 01:08PM, JST

KB.bcp

5'-CAGCACCCAGAGTTCTGCAC-3'

KB\_3500\_POP7\_BDTV3.mob

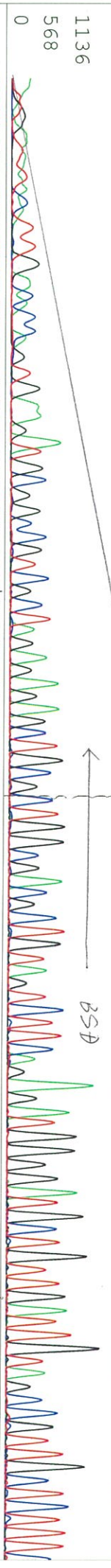
Jan 18, 2022 01:23PM, JST

KB 1.4.1.8 Cap:7

Pts 1711 to 8706 Pk1 Loc:1679

Spacing: 11.03 Pts/Panel1350

N NNNNNNNNNNN N N N NNNNN N T G N A G A N G C G G C C G T C G C T A G A G A G A G C T G C T G C G C A C G C T G T A G T C T T C A G A G A T G G G G A T G C T G T T G A T T G T A G C C C T T T



C A A T G A G G G T G G A T T C T T G A G A C A A A G G C T T G G C C A T G G G C C C G G A T T T C C T C C A C G T C A C C G C A T G T A G A A G A C T T C C T C T G C C C T G C C C G G A T C C C T T G T T A C A G C T

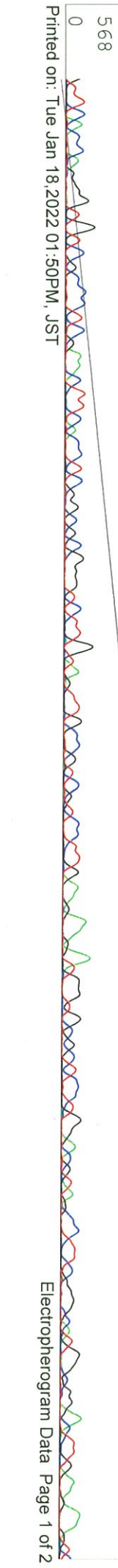
C G T C C A T G C C C G A G A G T G A T C C C G G C G C G G T C A C G A A C T C C A G A G G A C C A T G T G A T C C G C C T T C T C G T T G G G G T C T T G C T C A G G G C G G A C T G G T A G C T C A G G T A G T G G T T G

T C G G C A G C A G C A C G G G G C C G T C C G C C G A T G G G G G T T C T G C T G G T A G T G G T C G G C G A G C T G C A G C C C G C C G T C C T C G A T G T T G T G C C G G A T C T T G A A G T T G G C C T T G A T G C C

G T T C T T C T G C T T G T C G G C G G T G A T A T A G A C C T T G T G G C T G T T G T A G T T G T A C T C C A G C T T G T G C C C C A G G A T G T T G C C G T C C T C T T G A A G T C G A T G C C C T T C N G C T C G A T G C C

T T C A C C N G G G T G T C G C C C T C N A A C T T C N C C T C G G C G C G G T C T T G N A G T T G C C N T C N N C C T T G A A N A A N N N G T G C G C T C C T G A N N T A G C C N T C N G N N T G G C G G N T T G N A A A N T

71 581 591 601 611 621 631 641 651 661 671 681



S/N G:134 A:155 T:96 C:109 Primer name CMV Forward

12867\_12867\_B2Ab\_3\_CMV\_Forward

Feb 16, 2022 03:10PM, JST

KB:bcp 5'-GCACCAAAATCAACGGGACTT-3'

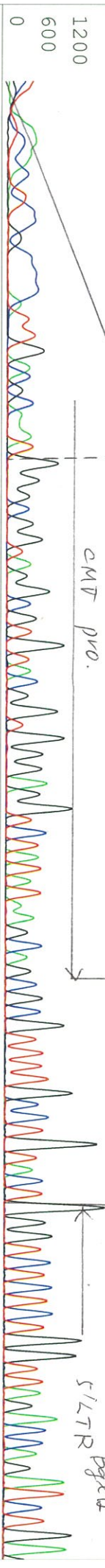
KB\_3500\_POP7\_BDTV3.mob

Feb 16, 2022 03:39PM, JST

KB 1.4.1.8 Cap:1 G G G C C G T A G G C C T G T A C C G T G G A G G T C T A T A A G C A G C G C C T T T T E C C C T G T A C T G G G T C T C T C T G G T T A G A C C A G A T C T G A

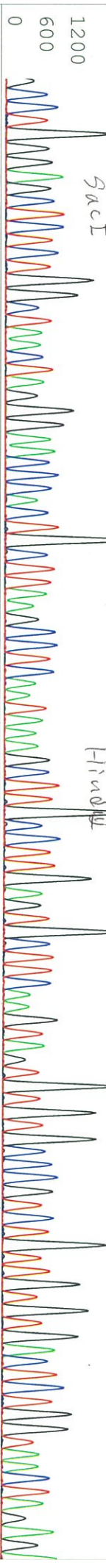
CMV pro.

5'LTR Page 109



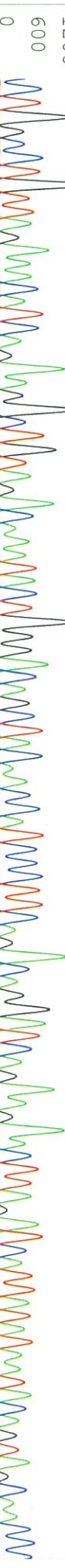
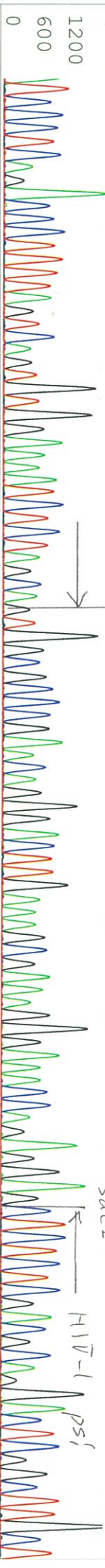
SacI

HindIII



SacI

HindIII



S/N G:134 A:155 T:96 C:109

12867\_12867\_B2Ab\_3\_CMV\_Forward

KB\_3500\_POP7\_BDTV3.mob

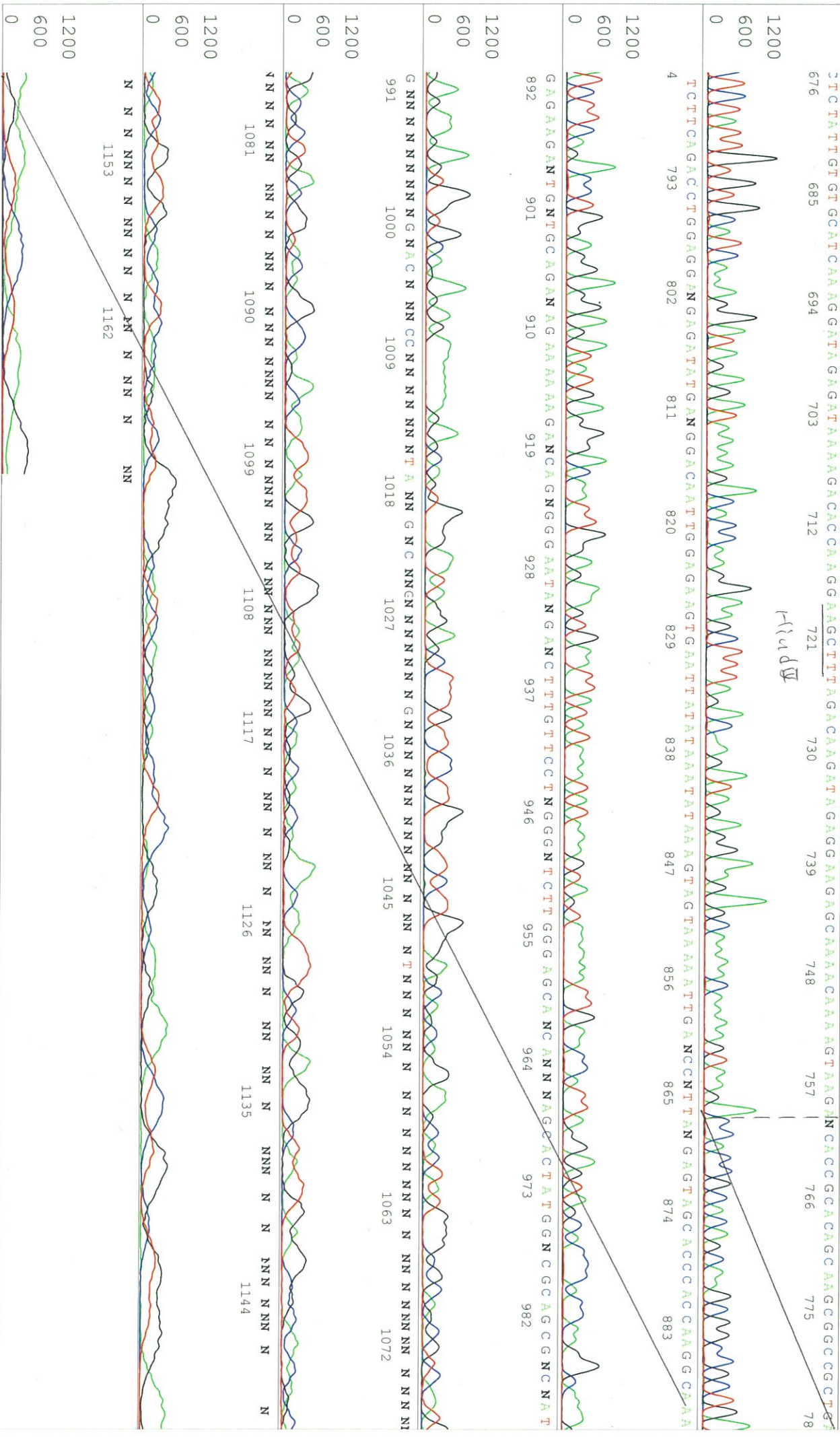
KB.bcp

Pls 1371 to 13671 Pk1 Loc:1348

KB 1.4.1.8 Cap:1

Version 6.0 HiSQV Bases: 969

Feb 16, 2022 03:10PM, JST  
Feb 16, 2022 03:39PM, JST  
Spacing: 12.37 Pts/Panel1350  
Plate Name: 20220216 Kitaku





S/N G:112 A:142 T:101 C:91

Primer name F : RRE\_F1

12867\_12867\_B2Ab\_3\_RRE\_F1  
KB\_3500\_POP7\_BDTV3.mob

Feb 16, 2022 03:10PM, JST  
Feb 16, 2022 03:39PM, JST

KB.bcp

5'-TGACCGCTGACCGGTACAGGCC-3'

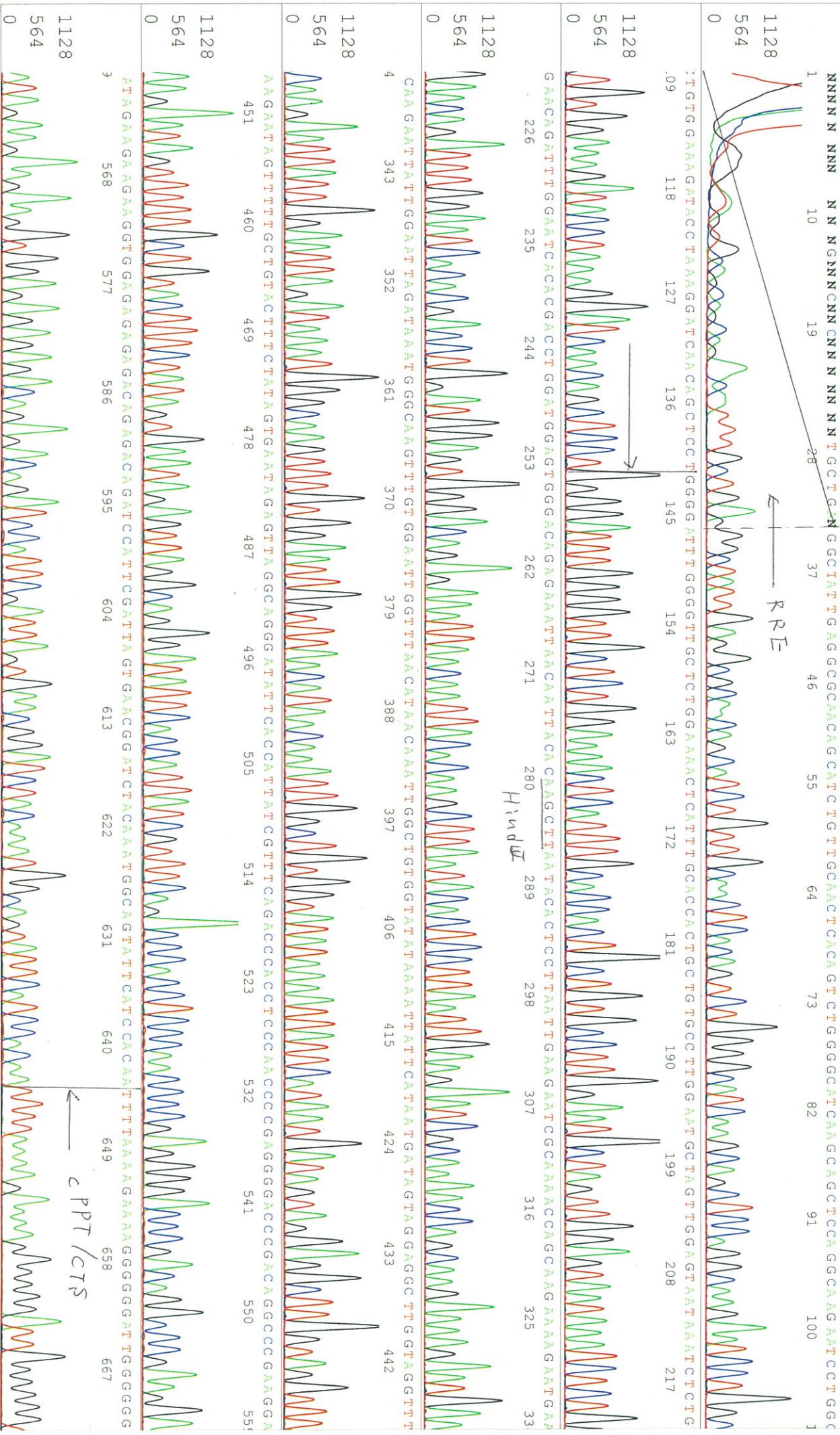
Pts 1368 to 13795 Pk1 Loc:1345

Spacing: 12.18 Pts/Panel1350

KB 1.4.1.8 Cap2

Version 6.0 HiSQV Bases: 977

Plate Name: 20220216 Kitaku



S/N G:112 A:142 T:101 C:91

12867\_12867\_B2ab\_3\_RRE\_F1

Feb 16, 2022 03:10PM, JST

KB.bcp

KB\_3500\_POP7\_BDTv3.mob

Feb 16, 2022 03:39PM, JST

KB 1.4.1.8 Cap:2

Pts 1368 to 13795 Pk1 Loc:1345

Spacing:12.18 Pts/Panel1350

Version 6.0 HiSQV Bases: 977

Plate Name: 20220216 Kitaku

TACAGTGCAGGGGAAAAGAAATA GT AGACATAATA GCAACA GACCATAACAAC TAAAAGAATTTACAAA AACCAATTTACAAA AATTTCCGGGTTTATTACAGG GACAGCA G

676 685 694 703 712 721 730 739 748 757 766 775 784

AA|NTTCACTTTGAATTTATCCACAAAGTTGTACNAAAAGCAANGCTTTNAAAGGAACCAATTTCA GTCGACTGGATCCGGTACC GAATTCGGCGCCGCACTCGA NNTCTA GAN

793 802 811 820 829 838 847 856 865 874 883 892

CGAGCTTCTCTTGNACAAAGTGN TGAN AANTCN NGCTTCGTGAGGNTCCGGNGNCCGTCAGTGGGCAN ANCNCACTCGCCCA CANNNCCCN ANNN NGGGGAN

901 910 919 928 937 946 955 964 973 982 991 1000

NNGG NCGGNNTTGAANCNNNNNNNNNNNNNN NNNNNNNNGGNAANNNGGNANNN

1009 1018 1027 1036 1045 1054 1063 1072 1081 1090

NN

1099 1108 1117 1126 1135 1144 1153

NN

1162 1171 1180

NN

NN

NN

NN

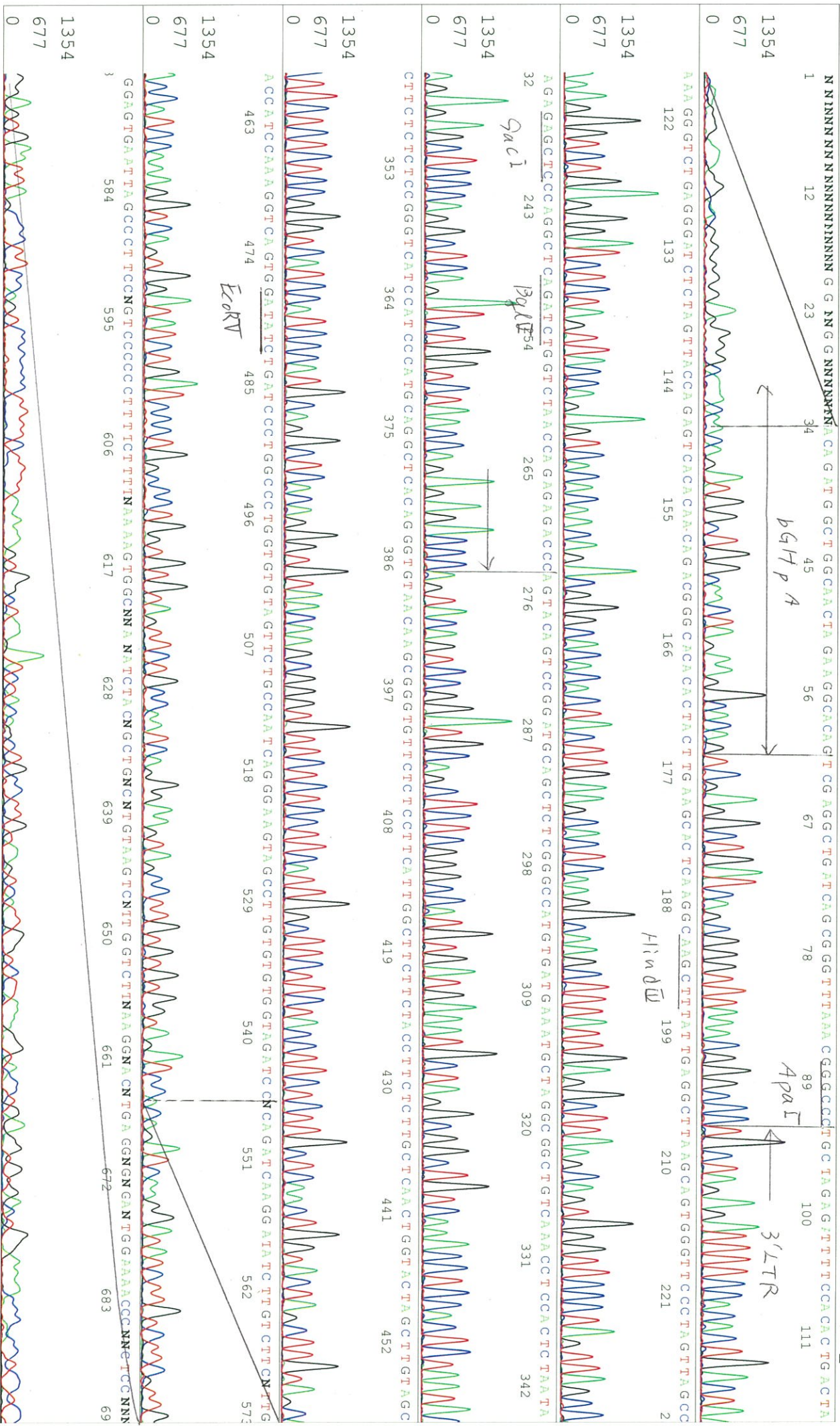


SN G:37 A:23 T:21 C:19 Primer name G : bGH\_rev3  
KB.bcp  
KB 1.4.1.8 Cap:19 5'-TTAGGAAAGGACACTGGGACTG-3'  
Version 6.0 HISQV Bases: 665

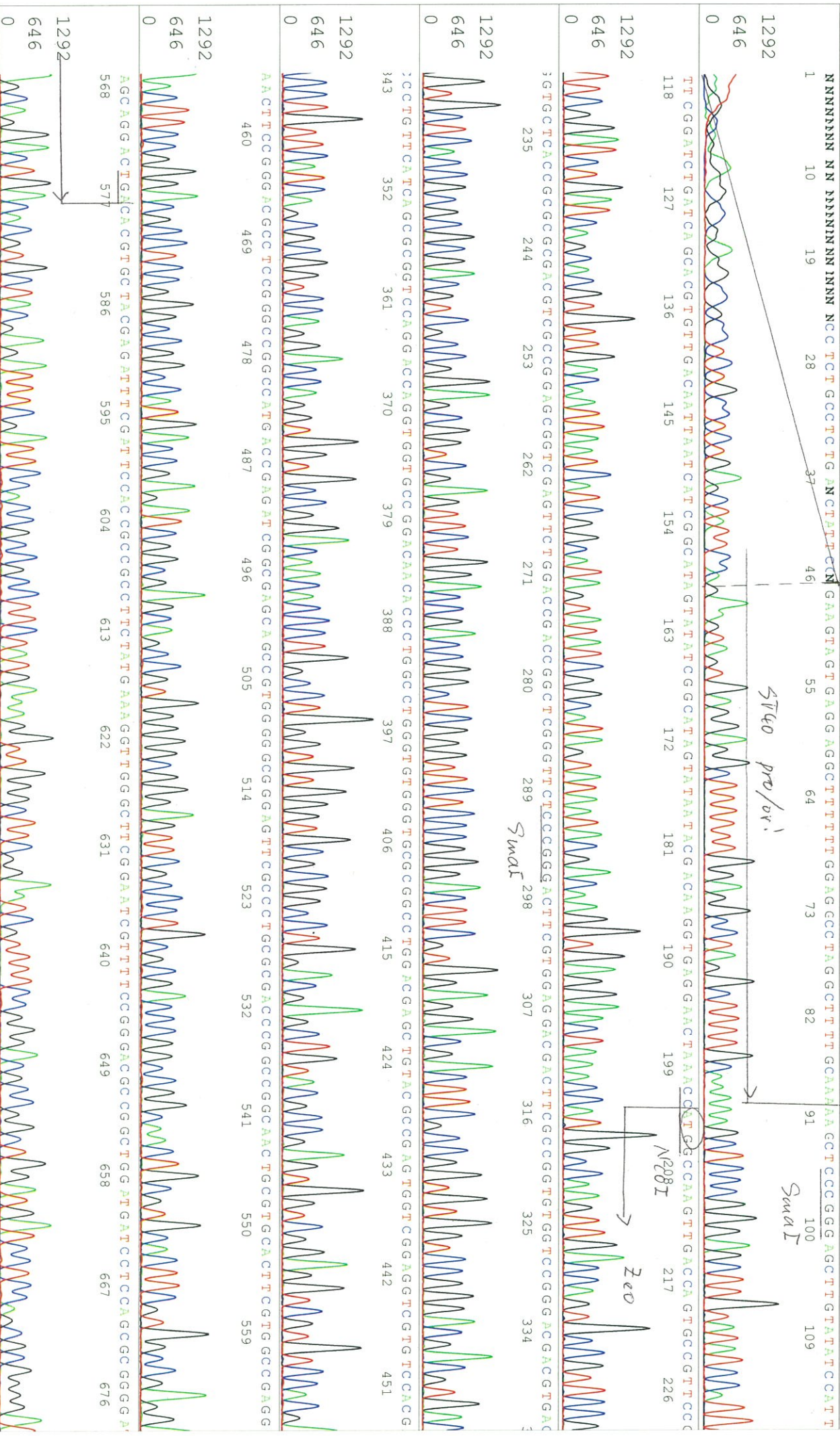
12867\_12867\_B2Ab\_3\_bGH\_rev3\_G01\_19\_AB124  
12867\_12867\_B2Ab\_3\_bGH\_rev3  
KB\_3500\_POP7\_BDTV3.mob  
Pls 1715 to 8706 PK1 Loc:1683

Inst Model/Name 3500/3500 Instrument

Jan 18, 2022 01:08PM, JST  
Jan 18, 2022 01:23PM, JST  
Spacing: 10.97 Pls/Panel1350  
Plate Name: 20220118\_dnabank



S/N G:79 A:67 T:53 C:68 Primer name H : SV40pro\_ori\_F  
KB.bcp 5'-TTCTCCGCCCCCATGCTGACTAAT-3'  
KB 1.4.1.8 Cap.4



S/N G:79 A:67 T:53 C:68

12867\_12867\_B2Ab\_3\_SV40pro\_ori\_F

KB\_3500\_POP7\_BDTV3.mob

Pls 1399 to 13812 Pk1 Loc:1376

Version 6.0 HisQV Bases: 988

KB 1.4.1.8 Cap:4

Feb 16, 2022 03:10PM, JST  
Feb 16, 2022 03:39PM, JST  
Spacing: 12.35 Pts/Panel1350  
Plate Name: 20220216 Kitaku

