

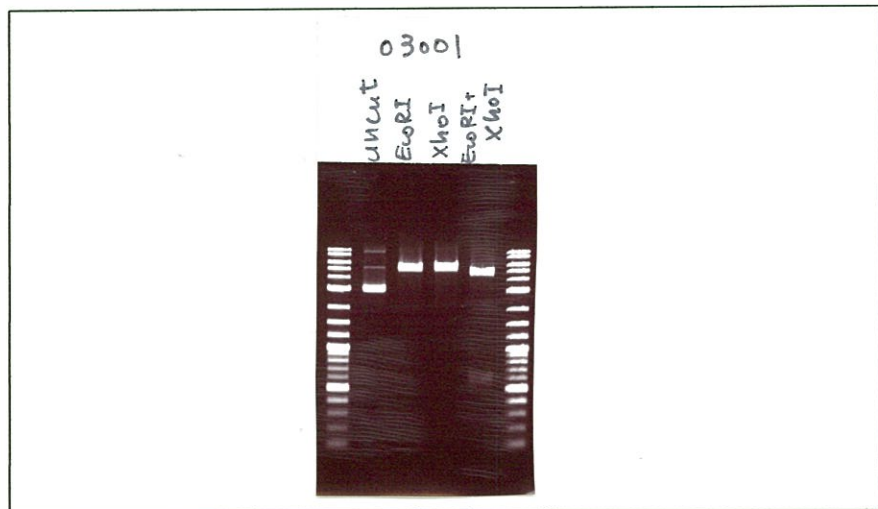
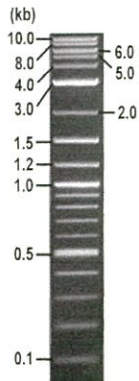


RIKEN DNA BANK

clone name : pGST-AID

- Clone ID : RDB _ 03001
- Lot : 12827 _ A4Gi
- DNA Concentration : 25 nanogram/microliter
- Volume : 40 microliter
- Form : DNA solution in TE buffer
- Host : DH5 alpha
- Culture : LB medium
- Antibiotics : 100 microgram/ml Ampicillin
- Purification : QIAGEN QIAprep Spin Miniprep kit
- Digestion by restriction enzyme

2-Log DNA Ladder
(NEB#N3200L),
125 ng/well



Electrophoresis : 54 nanogram DNA per lane ; 1% agarose gel , 1 x TAE Buffer

Restriction enzyme	Expected size of fragment
<u>EcoRI</u>	<u>5.6</u> kbp
<u>XhoI</u>	<u>5.6</u> kbp
<u>EcoRI + XhoI</u>	<u>4.9, 0.6</u> kbp
	kbp
	kbp

● Confirmation of the insertion sequence

Sequence name	Primer name
Sequence - A	pGEX_F
Sequence - B	-
Sequence - C	-
Sequence - D	-



APPROVED BY :

S/N G:430 A:296 T:272 C:292

Primer A : pGEX-F

KB.bcp

KB 1.4.1.8 Cap:7

5'-GGGCTGGCAAGCCACGTTTGGTG-3'

Version 5.4 HiSQV Bases: 1023

03001_12827_AAQi_pgEX_F

KB_3500_POP7_BDTV3.mob

Pts 1324 to 13347 Pk1 Loc:1301

03001_12827_AAQi_pgEX_F

KB_3500_POP7_BDTV3.mob

Pts 1324 to 13347 Pk1 Loc:1301

03001_12827_AAQi_pgEX_F

KB_3500_POP7_BDTV3.mob

Pts 1324 to 13347 Pk1 Loc:1301

03001_12827_AAQi_pgEX_F

KB_3500_POP7_BDTV3.mob

Pts 1324 to 13347 Pk1 Loc:1301

03001_12827_AAQi_pgEX_F

KB_3500_POP7_BDTV3.mob

Pts 1324 to 13347 Pk1 Loc:1301

03001_12827_AAQi_pgEX_F

KB_3500_POP7_BDTV3.mob

Pts 1324 to 13347 Pk1 Loc:1301

03001_12827_AAQi_pgEX_F

KB_3500_POP7_BDTV3.mob

Pts 1324 to 13347 Pk1 Loc:1301

03001_12827_AAQi_pgEX_F

KB_3500_POP7_BDTV3.mob

Pts 1324 to 13347 Pk1 Loc:1301

03001_12827_AAQi_pgEX_F

KB_3500_POP7_BDTV3.mob

Pts 1324 to 13347 Pk1 Loc:1301

03001_12827_AAQi_pgEX_F

KB_3500_POP7_BDTV3.mob

Pts 1324 to 13347 Pk1 Loc:1301

03001_12827_AAQi_pgEX_F

KB_3500_POP7_BDTV3.mob

Pts 1324 to 13347 Pk1 Loc:1301

03001_12827_AAQi_pgEX_F

KB_3500_POP7_BDTV3.mob

Pts 1324 to 13347 Pk1 Loc:1301

03001_12827_AAQi_pgEX_F

KB_3500_POP7_BDTV3.mob

Pts 1324 to 13347 Pk1 Loc:1301

03001_12827_AAQi_pgEX_F

KB_3500_POP7_BDTV3.mob

Pts 1324 to 13347 Pk1 Loc:1301

03001_12827_AAQi_pgEX_F

KB_3500_POP7_BDTV3.mob

Pts 1324 to 13347 Pk1 Loc:1301

