

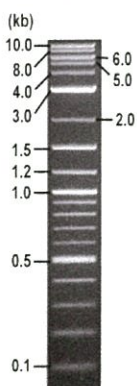


RIKEN DNA BANK

clone name : pKM2L-pvCMV

- Clone ID : RDB_05551
- Lot : 12815_A4G3
- DNA Concentration : 25 nanogram/microliter
- Volume : 40 microliter
- Form : DNA solution in TE buffer
- Host : DH5 alpha
- Culture : LB medium
- Antibiotics : 25 microgram/ml Kanamycin
- Purification : QIAGEN QIAprep Spin Miniprep kit
- Digestion by restriction enzyme

1 kb Plus DNA Ladder
(NEB#N3200L),
250 ng/well



Electrophoresis : 100 nanogram DNA per lane ; 1% agarose gel , 1 x TAE Buffer

Restriction enzyme	Expected size of fragment
BglII	5.0 kbp
EcoRV	5.0 kbp
BglII+EcoRV	3.4, 1.6 kbp
	kbp

● Confirmation of the insertion sequence

Please be sure to check our sequence analysis results before your request.

Sequence name	Primer ID	Primer name	Confirmed feature
Sequence - A	Pr0083	phRLR2primer	Intron, CMV en_pro
Sequence - B	Pr0166	pAxCALNLF1	hRluc
Sequence - C	Pr0410	M13_-40	CMV en_pro, intron
Sequence - D	Pr0255	CSII_CMV5_v2	CMV en_pro, intron, hRluc
Sequence - E	-	-	-
Sequence - F	-	-	-
Sequence - G	-	-	-
Sequence - H	-	-	-

APPROVED BY :



S/N G:282 A:253 T:193 C:195 primer name A : phRLR2

05551_12815_A4G3_phRLR2
KB_3500_POP7_BDTV3.mob

Jul 10, 2014 09:26AM, JST
Jul 10, 2014 09:57AM, JST

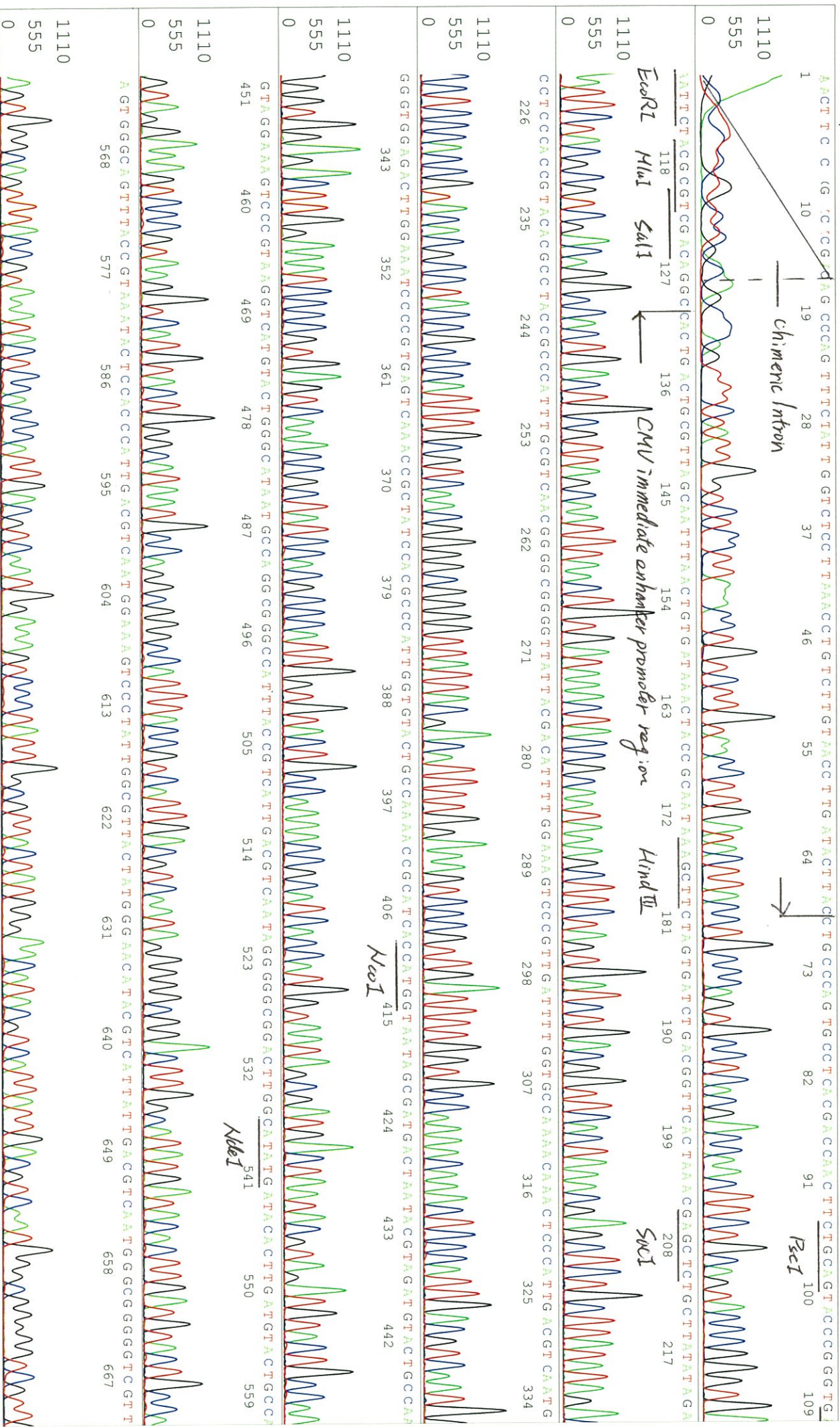
KB.bcp

5'-CCAATAGGTGCCTATCAGAAACGC-3'

Pls 1488 to 13188 Pk1 Loc: 1465
Version 6.0 HISQV Bases: 906

Spacing: 11.92 Pls/Panel1350
Plate Name: 20140710_mix

KB 1.4.1.8 Cap:13



S/N G:282 A:253 T:193 C:195

05551_12815_A4G3_phRLR2

Jul 10, 2014 09:26AM, JST

KB:bcp

KB_3500_POP7_BDTV3.mob

Jul 10, 2014 09:57AM, JST

KB 1.4.1.8 Cap:13

Pls 1488 to 13188 Pk1 Loc: 1465

Spacing: 1.92 Pls/Panel1350

GGGCCTCAGCCAGGGCGGGCCATTTCACCGTTAAGTTATGTAACCGCGGAACCTCCATAATATGGGCTATGAACTAATGACCCTAAATGATTAATAAATACTC
676 685 694 703 712 721 730 739 748 757 766 775

AAT AATCAATGCCAACATGGCGGTCATATTTGACATGAGCCAAATATAAATGTACATATATGATATAGATACAA CGTATGCCAATGGCCAAATAGCCAAATAT
784 793 802 811 820 829 838 847 856 865 874

CGATTATGCTATATTAACCAATGAAATAATGCTAATGGCCAAATATTTGAGCCAC TAG TGCATG CATATG TAGAACTTAG AGCTCGAGATC
883 892 901 910 919 928 937 946 955 964

ChUV Immediate enhancer
promoter region

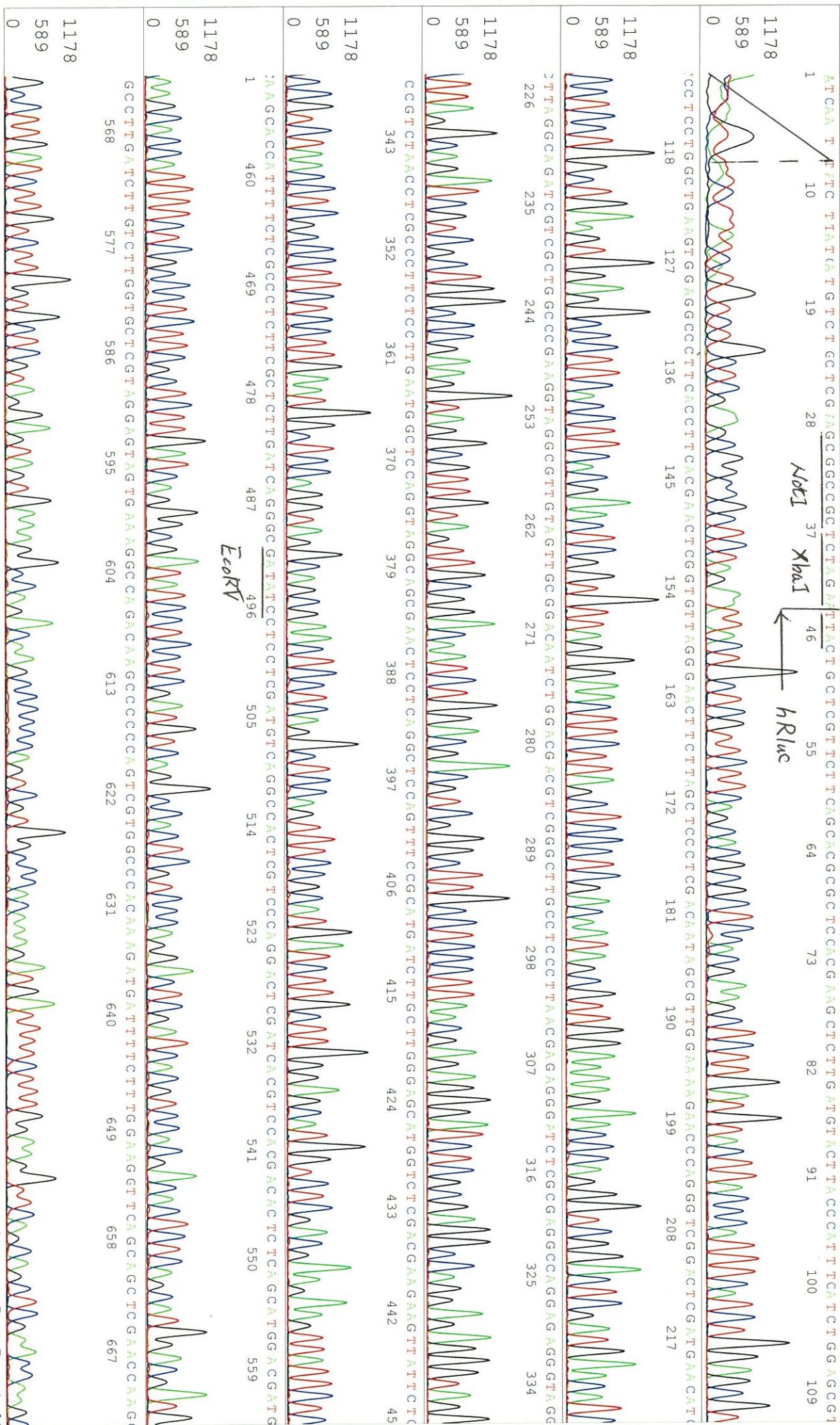
KleI
HindIII
SacI
XhoI
BglII

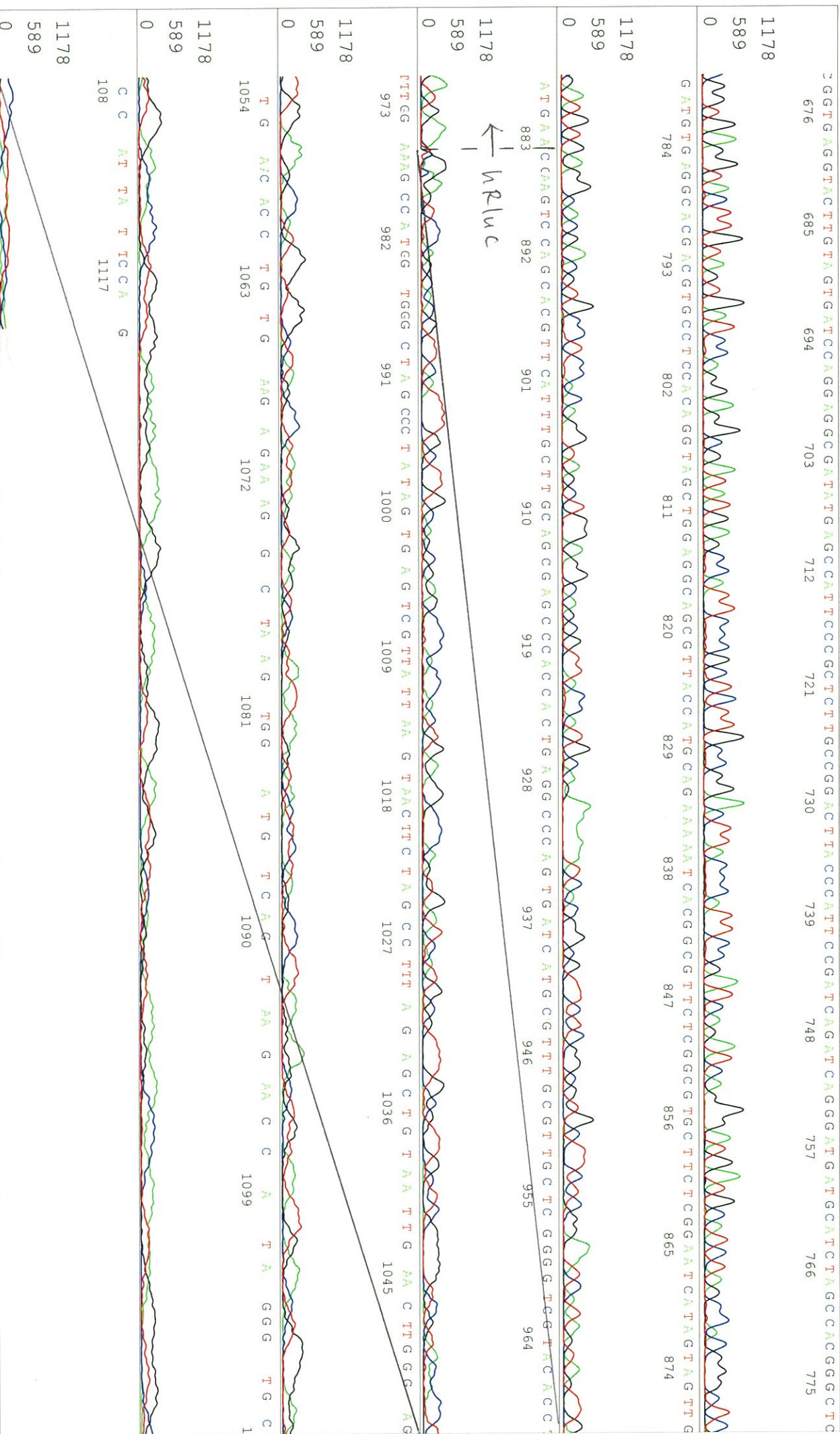
TTAA TCATTAACCCTGGTTTATCCCTAATTTAAA TGA TGA CC TGC A GGCA TGC A AAG C TTTGG CAC TGGG CC G TCG TTTT TAC A CCGG
973 982 991 1000 1009 1018 1027 1036 1045

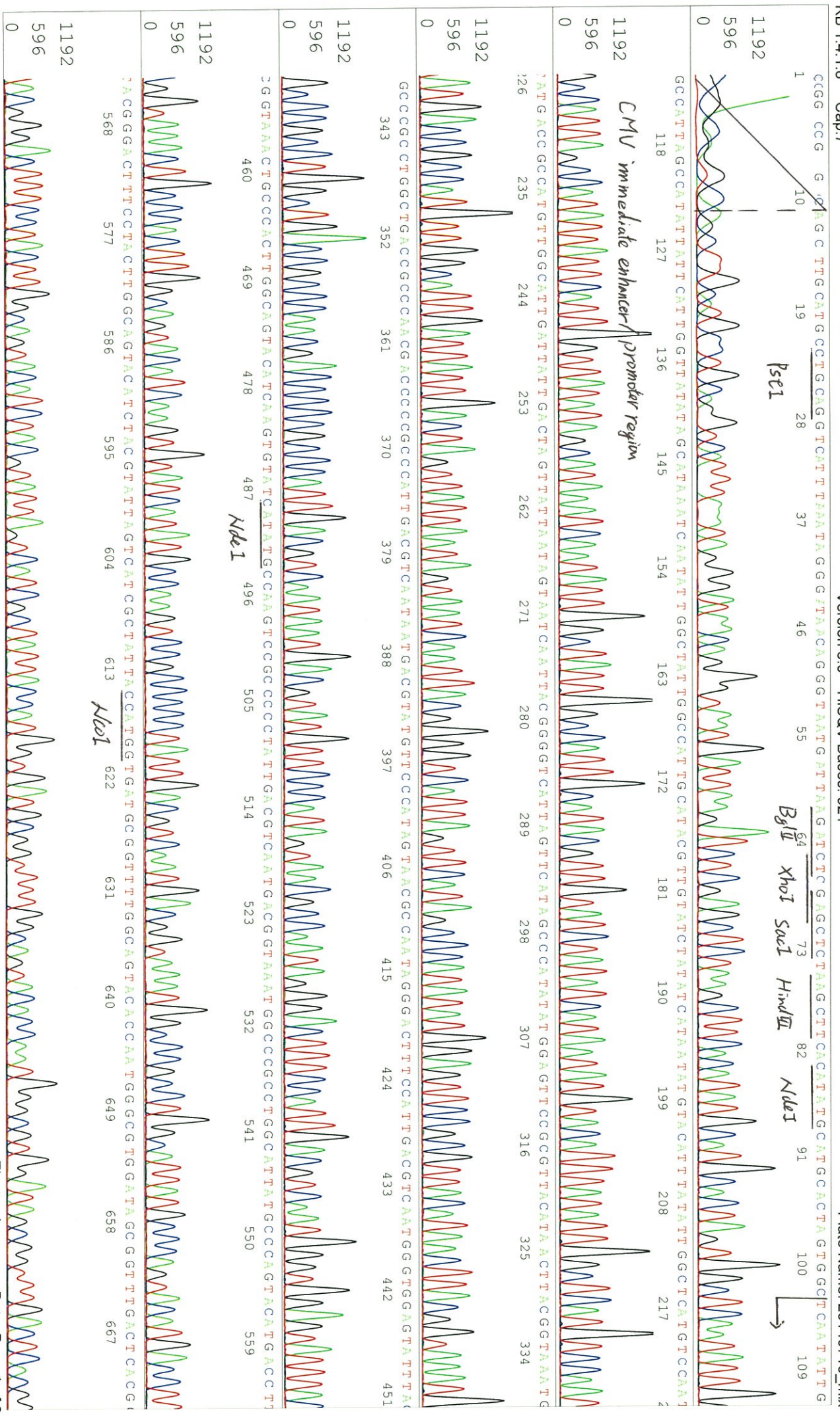
TCG TTG AC TGG T AAA A CCC C TGA CG T AC CG A C T AG TT C G TC TT G C A G C A C A TT
1054 1063 1072 1081 1090 1099

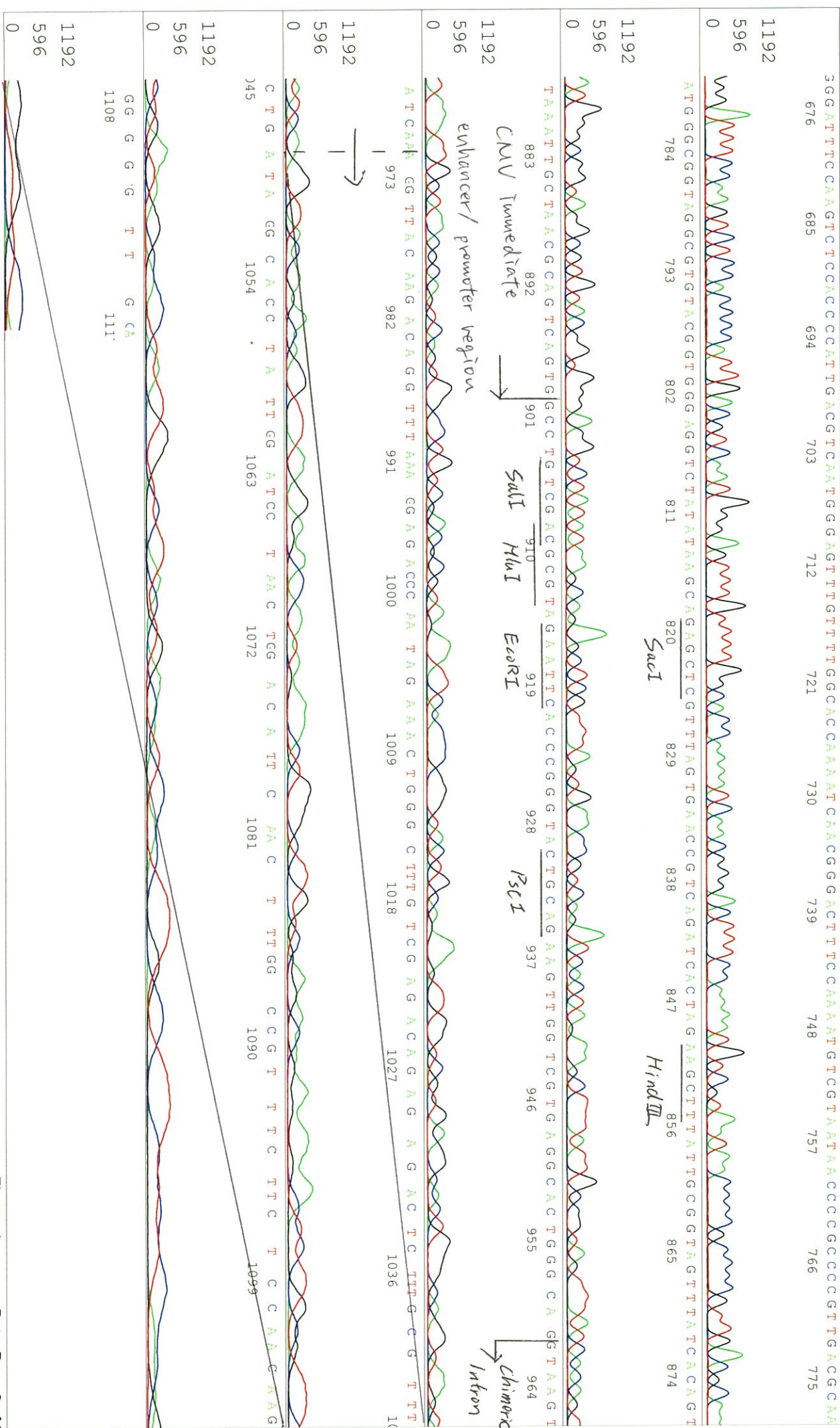
CCCCA TTTT CG
1108











S/N G:355 A:469 T:463 C:624 primer name **CSI1_CMV5_v2**

KB.bcp KB_3500_POP7_BDTV3.mob

Jan 15, 2020 03:24PM, JST

KB 1.4.1.8 Cap:8 5'-AGCAGAGCTCGTTTAGTGAACCG -3' Pts 1365 to 13100 Pk1 Loc:1342

Spacing:11.84 Pts/Panel1350

Version 6.0 HISQV Bases: 900

Plate Name: 20200115_dnabank

