

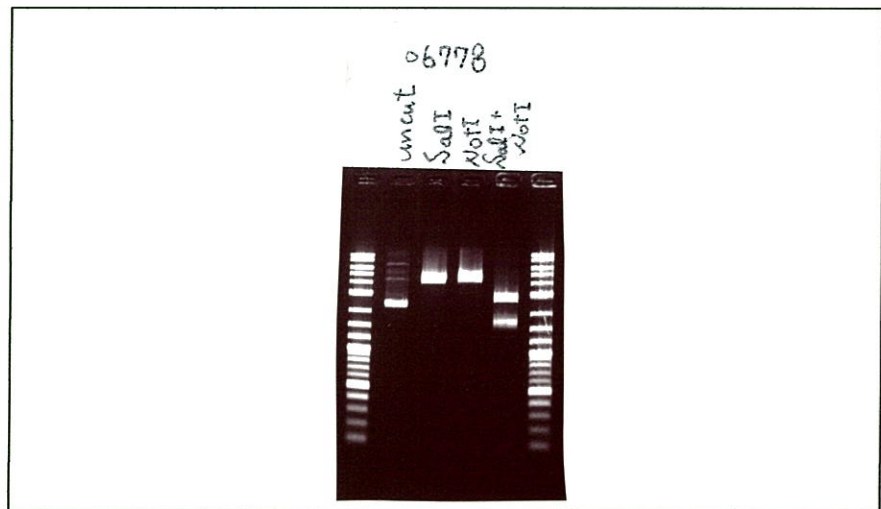
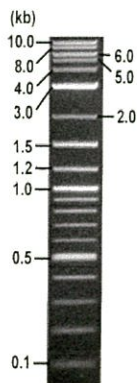


**RIKEN DNA BANK**

clone name : mouse SDF-1 alpha cDNA

- Clone ID : RDB \_ 06778
- Lot : 12810 \_ A4Fi
- DNA Concentration : 25 nanogram/microliter
- Volume : 40 microliter
- Form : DNA solution in TE buffer
- Host : DH5 alpha
- Culture : LB medium
- Antibiotics : 100 microgram/ml Ampicillin
- Purification : QIAGEN QIAprep Spin Miniprep kit
- Digestion by restriction enzyme

2-Log DNA Ladder  
(NEB#N3200L),  
125 ng/well



Electrophoresis : 42 nanogram DNA per lane ; 1% agarose gel , 1 x TAE Buffer

Restriction enzyme	Expected size of fragment
<u>SalI</u>	<u>4.7</u> kbp
<u>NotI</u>	<u>4.7</u> kbp
<u>SalI + NotI</u>	<u>2.9, 1.8</u> kbp
	kbp
	kbp

● Confirmation of the insertion sequence

Sequence name	Primer name
Sequence - A	M13_-40
Sequence - B	Reverse2
Sequence - C	-
Sequence - D	-



APPROVED BY :

S/N G:254 A:188 T:144 C:189  
 KB.bcp  
 KB 1.4.1.8 Cap:20  
 primer name A : M13\_-40  
 5'-GTTTCCAGTCACGACGTTGTA-3'

