

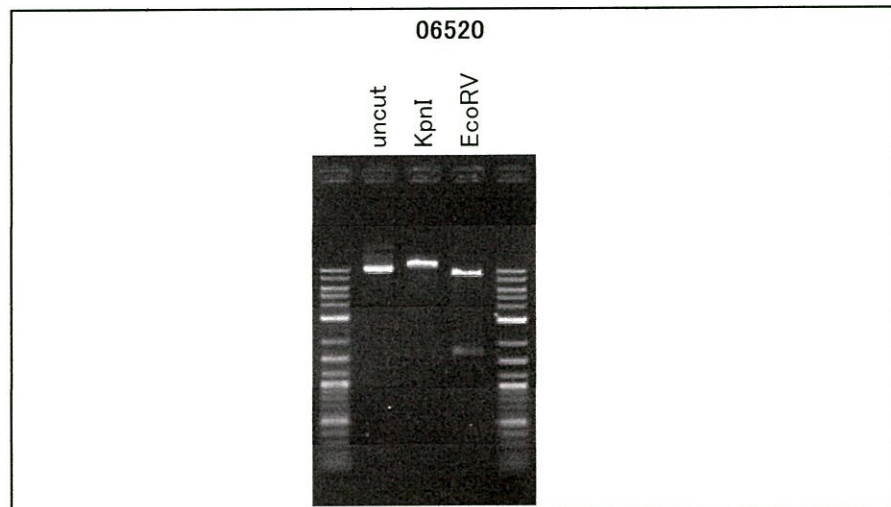
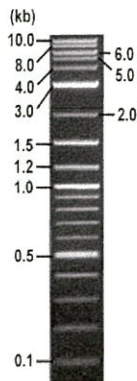


**RIKEN DNA BANK**

clone name : pREP41-ccdB2

- Clone ID : RDB \_ 06520
- Lot : 12284 \_ A5L2
- DNA Concentration : 25 nanogram/microliter
- Volume : 40 microliter
- Form : DNA solution in TE buffer
- Host : Survival2
- Culture : LB medium
- Antibiotics : 100 microgram/ml Amp; 33 microgram/ml Cm
- Purification : QIAGEN QIAprep Spin Miniprep kit
- Digestion by restriction enzyme

2-Log DNA Ladder  
(NEB#N3200L),  
125 ng/well



Electrophoresis : 91 nanogram DNA per lane ; 1% agarose gel , 1 x TAE Buffer

Restriction enzyme	Expected size of fragment
<u>KpnI</u>	<u>10.5</u> kbp
<u>EcoRV</u>	<u>8.8, 1.7</u> kbp
_____	_____ kbp
_____	_____ kbp
_____	_____ kbp

● Confirmation of the insertion sequence

Sequence name	Primer name	Sequence name	Primer name
Sequence - A	nmt1Fw	Sequence - E	-
Sequence - B	nmt1Rv	Sequence - F	-
Sequence - C	LEU2pro_F	Sequence - G	-
Sequence - D	f1ori_R3	Sequence - H	-

APPROVED BY :



S/N G:161 A:221 T:233 C:186

primer name A : nmt1Fw

06520\_12284\_A5L2\_nmt1Fw

Dec 04, 2015 12:26PM, JST

KB: bcp

5-GCTGTA AAAACACCACGAGAC-3'

KB\_3500\_POP7\_BDTV3.mob

Dec 04, 2015 12:52PM, JST

KB 1.4.1.8 Cap:15

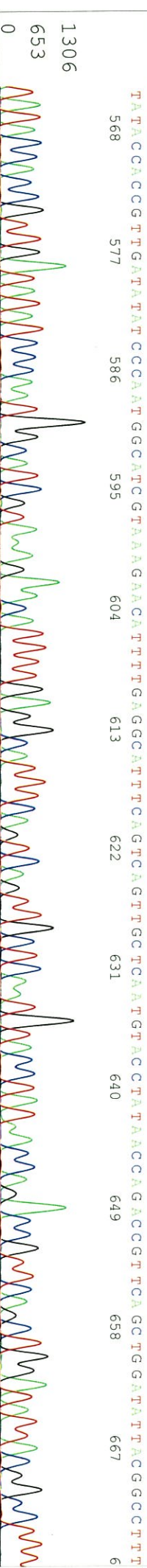
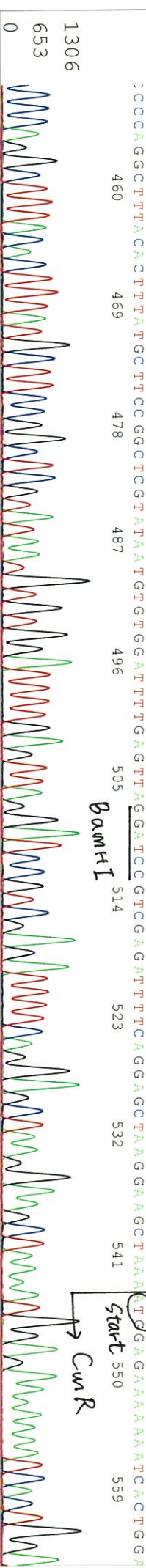
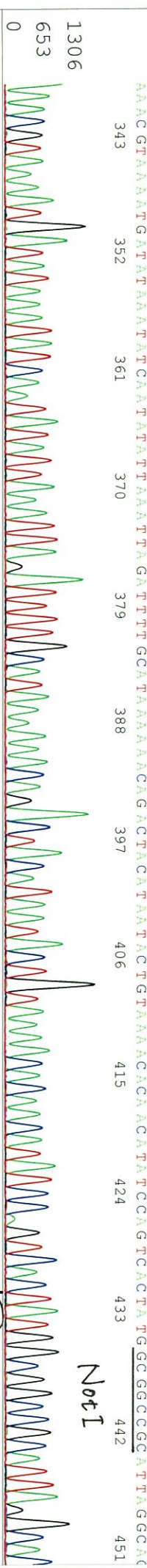
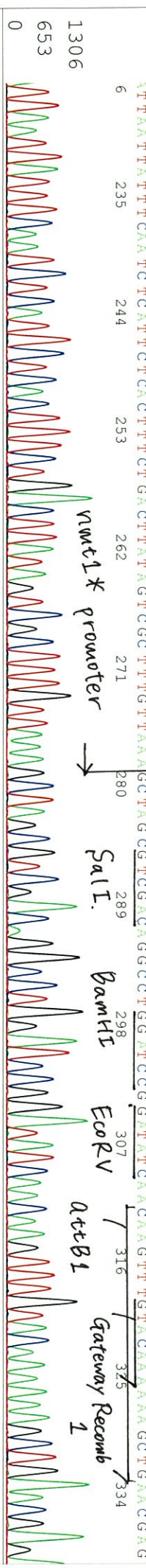
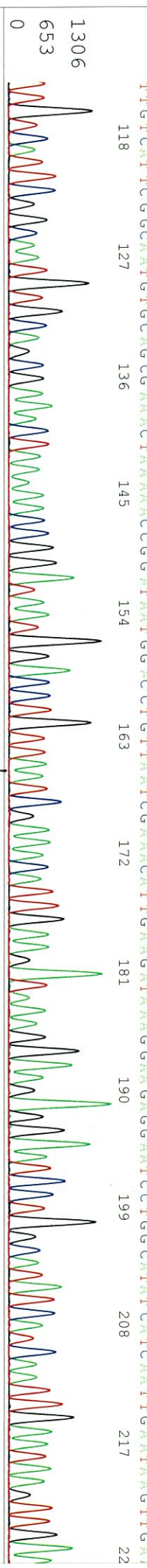
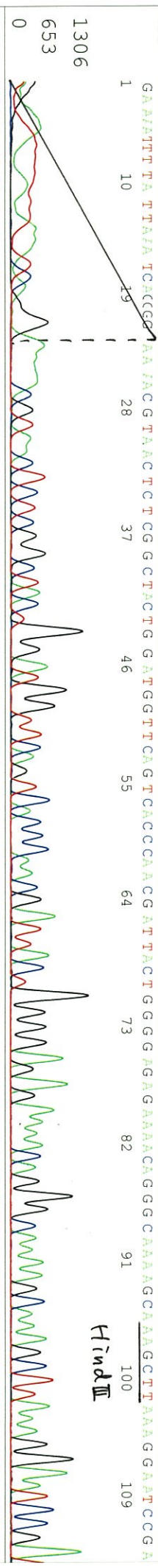
Pts 1330 to 13082 PK1 Loc: 1307

Spacing: 11.57 Pts/Panel 350

HindIII

Version 6.0 HiSQV Bases: 987

Plate Name: 20151204\_mix2

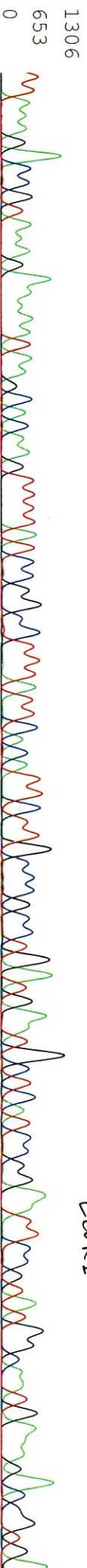


Printed on: Fri Dec 04, 2015 02:30PM, JST



T T A A A G A C C C G T A A A G A A A A T A A G C A C A A G T T T A T C C C G C C T T T A T T C A C A T T C T T G C C C C C C T G A T G A A T G C T C A T C C G G A A T T C C G T A T G C A A T G A A A G A C G G T G A

Eco RI



G C T G G T G A T A T G G G A T A G T G T T C A C C C T T G T T A C A C C G T T T C C A T G A G C A A A C T G A A A C G T T T T C A T C G C T C T G G A G T G A A T A C C A C G A C G A T T T C C G G C A G T T



C T A C A C A T A T A T T C G C A A G A T G T G G C G T G T T A C C G T G A A A A C C T G G C C T A T T T C C C T A A A G G G T T T A T T G A G A A T A T G T T T T C G T C A G C C A A T C C C T G

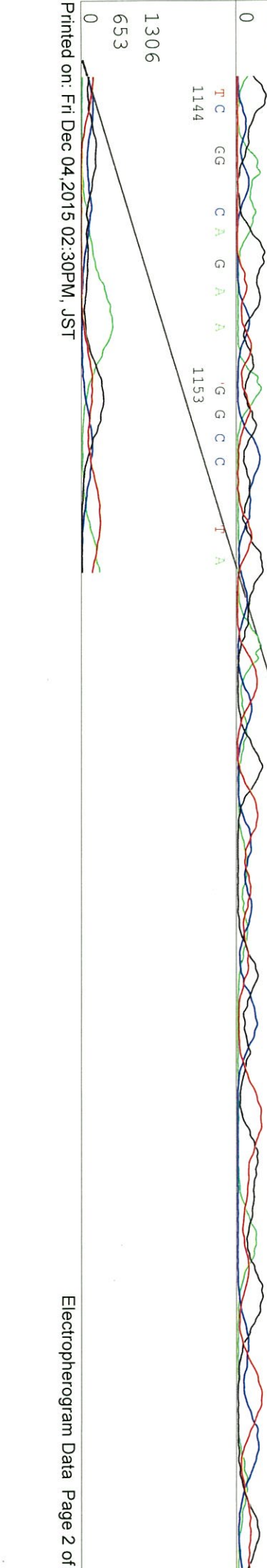
G G T G A G T T T C A C A G T T T T G A T T T A A C G T A C A T A T G G G A C A C T T T C A A C A A T G G G C A A T A T T A C G C C G



G C C G A C C A G T T G C T G A T G G C G G C T G C G A T T C A G T T C A T C A T G G C C G A T G T G A A T G C C A T G G G C A A T A T T A T A C G C C G



T C G G C A G A A G G C C T A A





S/N G:208 A:256 T:338 C:303

primer name  $\beta$  : nmt1Rv

06520\_12284\_A5L2\_nmt1Rv

Dec 04,2015 12:26PM, JST

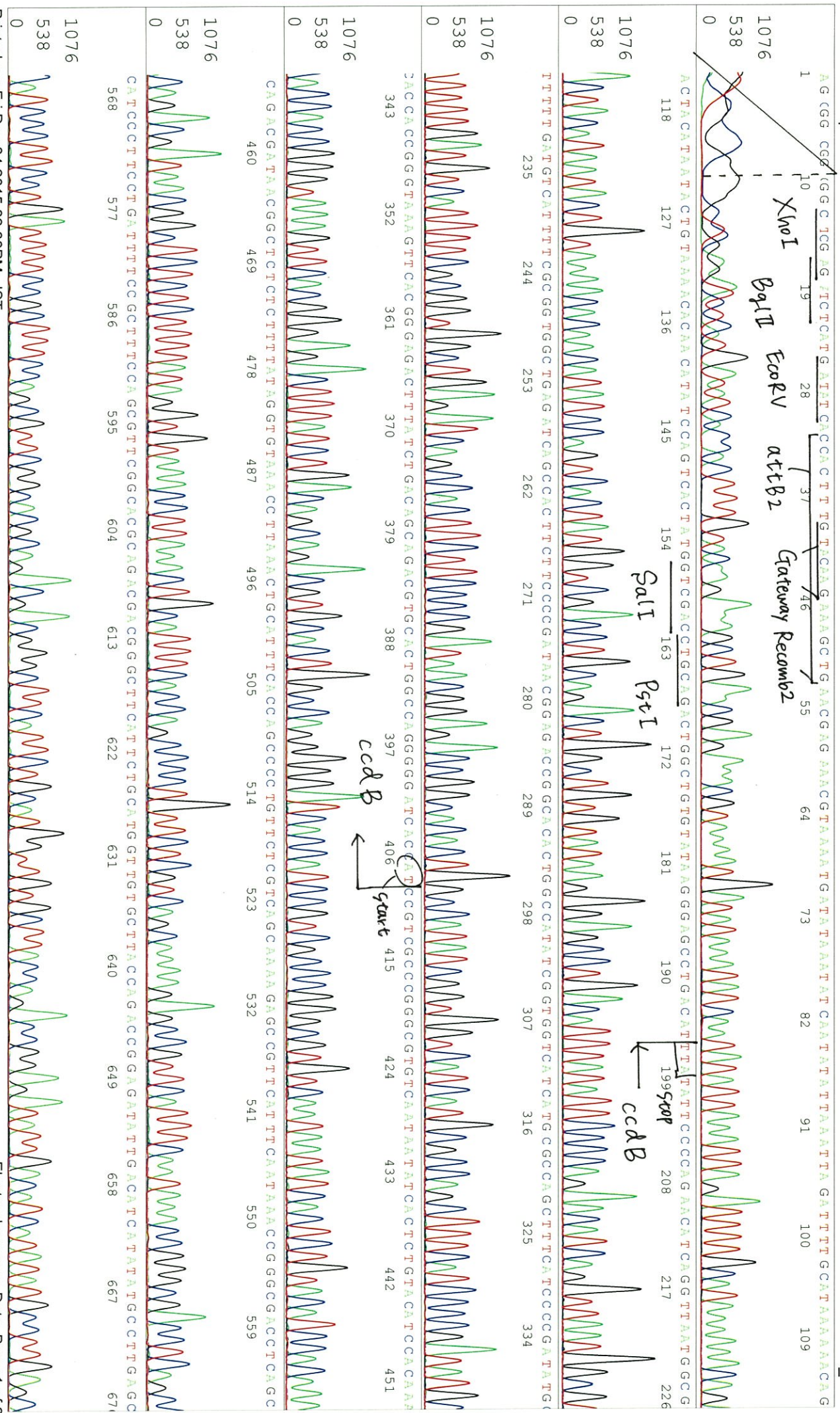
KB.bcp  
KB 1.4.1.8 Cap:18

5-AGACATTCCCTTTACCCTTA-3'

KB\_3500\_POP7\_BDTV3.mob  
Pis 1329 to 12982 PK1 Loc:1306

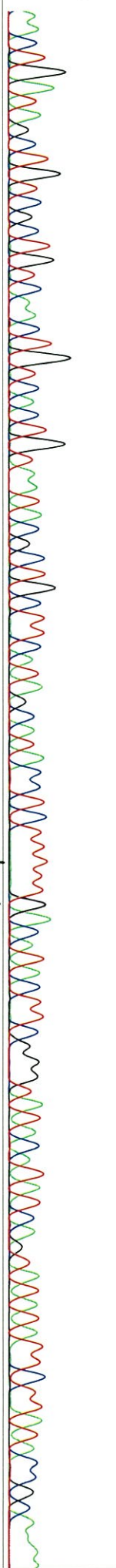
Dec 04,2015 12:52PM, JST  
Spacing:11.43 Pts/Panel1350  
Plate Name: 20151204\_mix2

Version 6.0 HISQV Bases: 1023

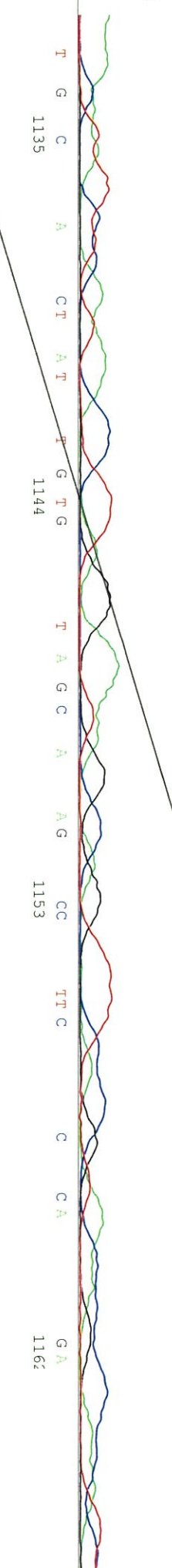
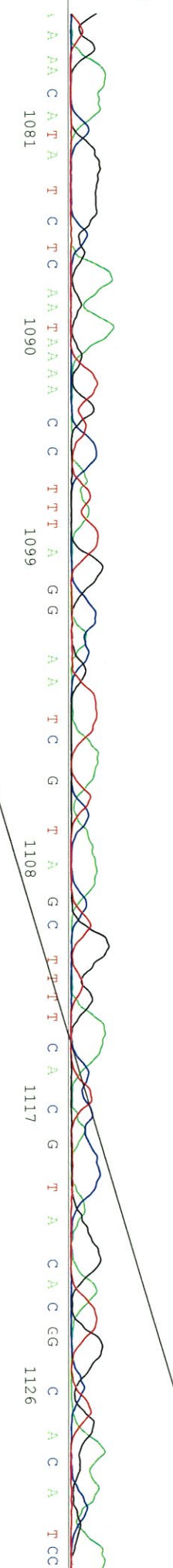
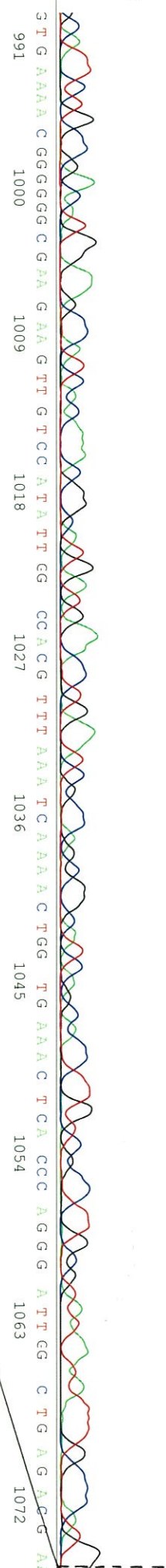
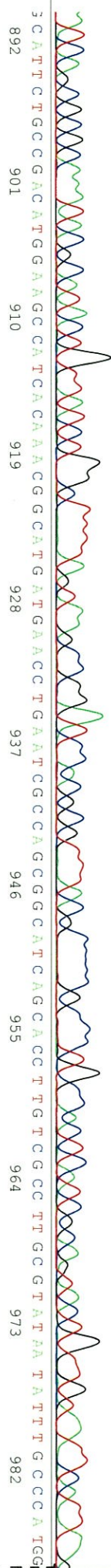
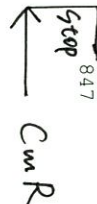




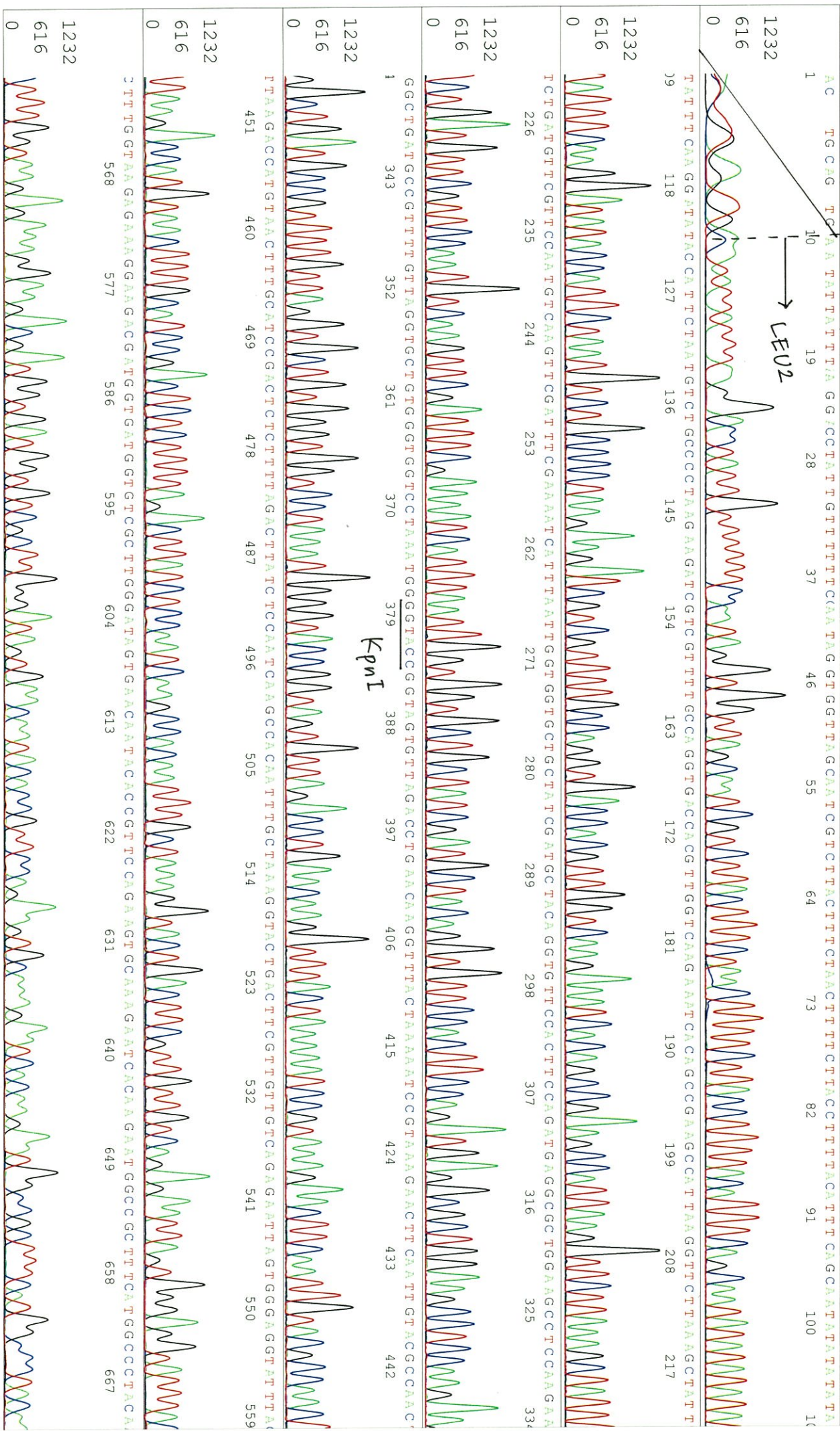
5 AACCTGATAGCC TGTCTGCTGTCAAC TGTCACTGTAATAACGCC TGTCCATAGCATACCTTTTGACATACCTTCGGGTTATACATATCA GTATATATTTCTTATACCGCCAAAF



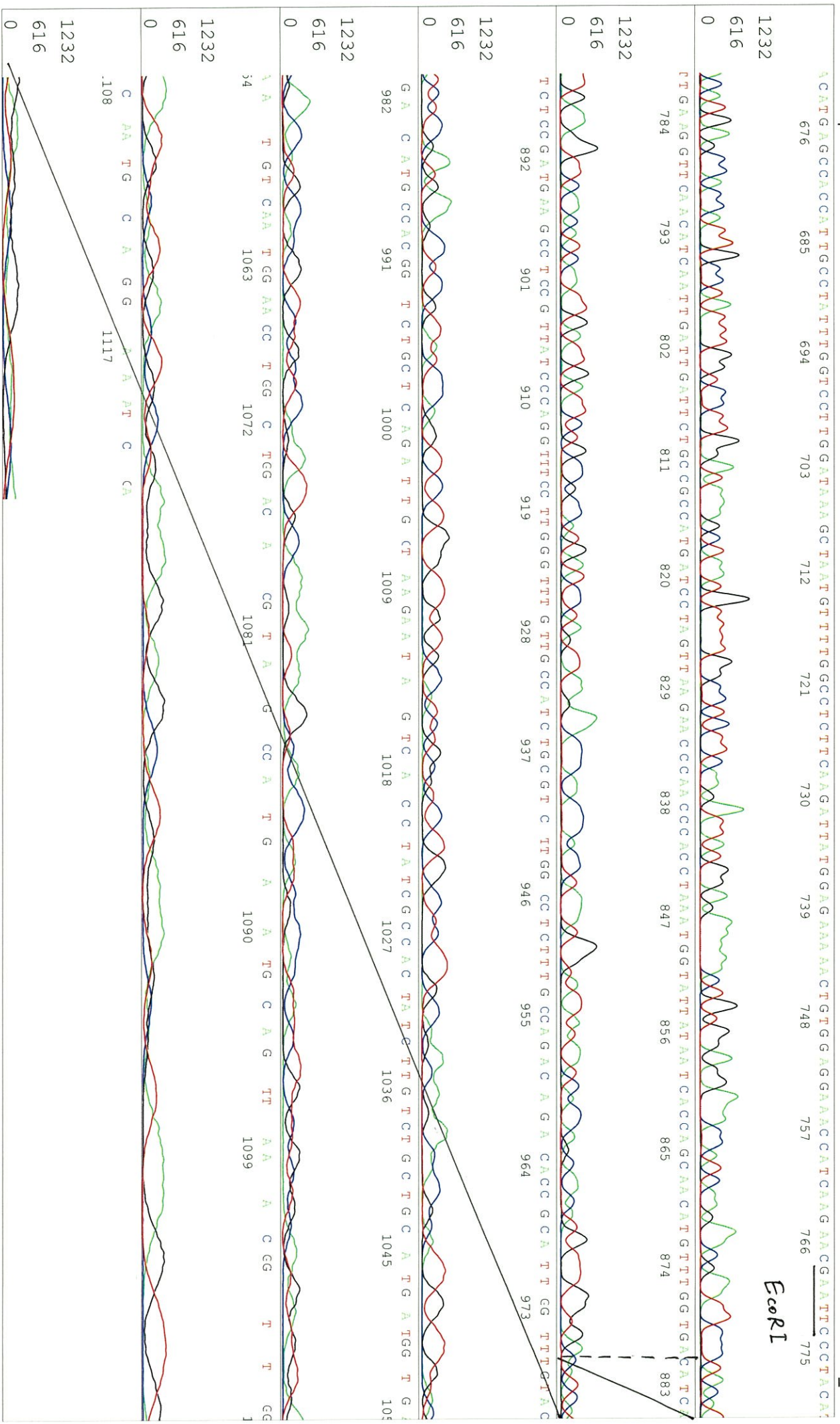
BamHI

















CGAAATGTCAAAATAAGCTCAGCAAAATATTAATACTTTAGGGAAGAGCCGATCGACGCACTTATTCTCCGGTTGTAAGATTCTTTCTTCAATAAATTCCCAACAAAGTAACTGGC  
 676 685 694 703 712 721 730 739 748 757 766 775



*XbaI*

