

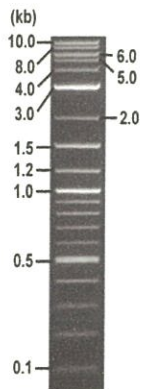


**RIKEN DNA BANK**

clone name : HA-Amot130-S176A/pcDNA3.1-pA83

- Clone ID : RDB \_ 12208
- Lot : 12208 \_ A5Hp
- DNA Concentration : 25 nanogram/microliter
- Volume : 40 microliter
- Form : DNA solution in TE buffer
- Host : DH5 alpha
- Culture : LB medium
- Antibiotics : 100 microgram/ml Ampicillin
- Purification : QIAGEN QIAprep Spin Miniprep kit
- Digestion by restriction enzyme

2-Log DNA Ladder  
(NEB#N3200L),  
125 ng/well



Electrophoresis : 41 nanogram DNA per lane ; 1% agarose gel , 1 x TAE Buffer

Restriction enzyme	Expected size of fragment
<u>BamHI</u>	<u>9.3</u> kbp
<u>BglII</u>	<u>6.9, 1.4, 1.0</u> kbp
_____	_____ kbp
_____	_____ kbp
_____	_____ kbp

● Confirmation of the insertion sequence

Sequence name	Primer name	Sequence name	Primer name
Sequence - A	CMV-Forward	Sequence - E	-
Sequence - B	GNP_primer#10	Sequence - F	-
Sequence - C	BGH_rev	Sequence - G	-
Sequence - D	SV40pro_F	Sequence - H	-



APPROVED BY :

S/N G:317 A:222 T:153 C:198

primer name A : CMV-Forward

12208\_12208\_A5Hp\_CMV-Forward

Sep 03, 2015 03:47PM, JST

KB.bcp

5'-GCACCAAAATCAACGGGACTT-3'

KB\_3500\_POP7\_BDTV3.mob

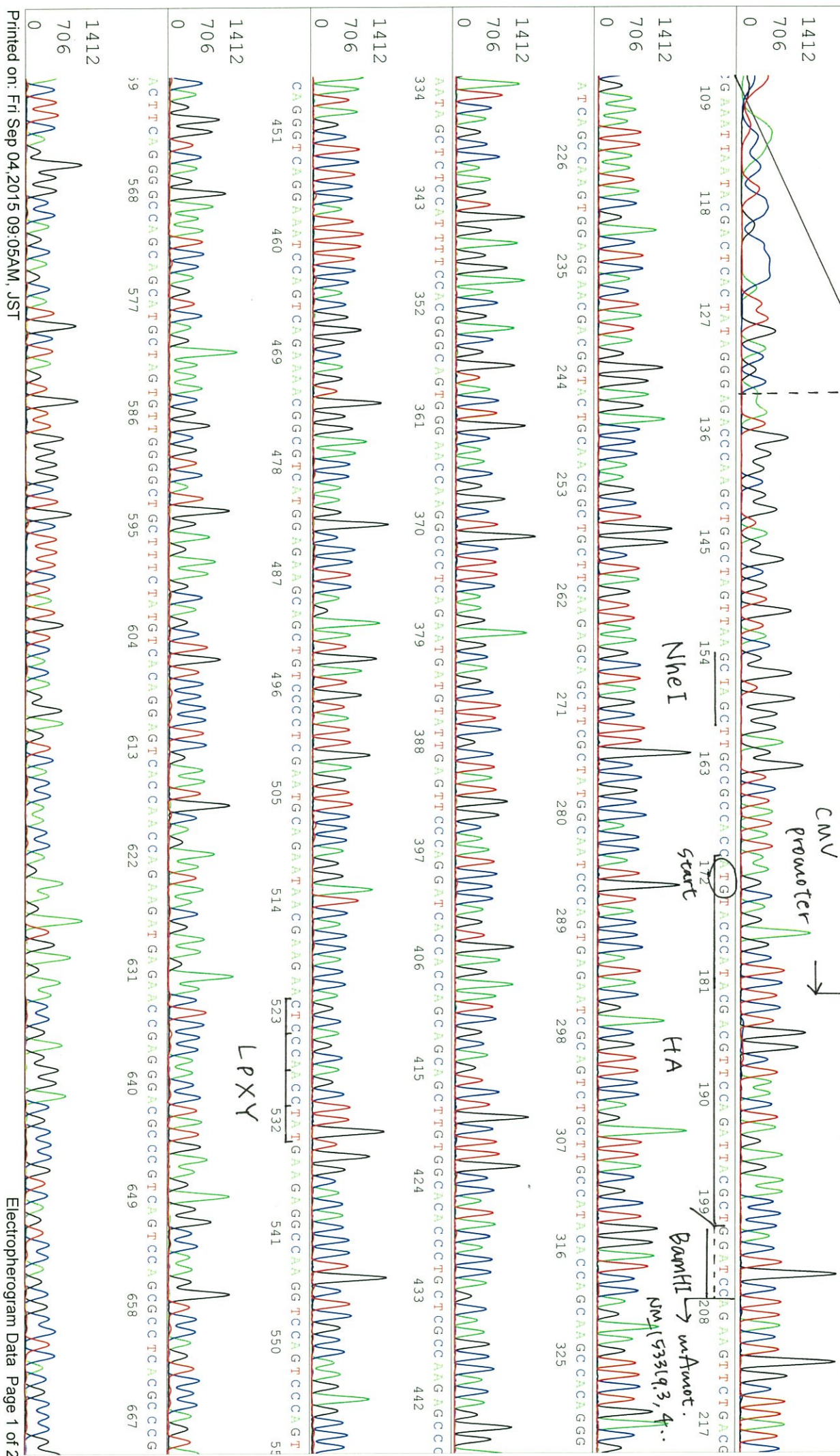
Sep 03, 2015 04:13PM, JST

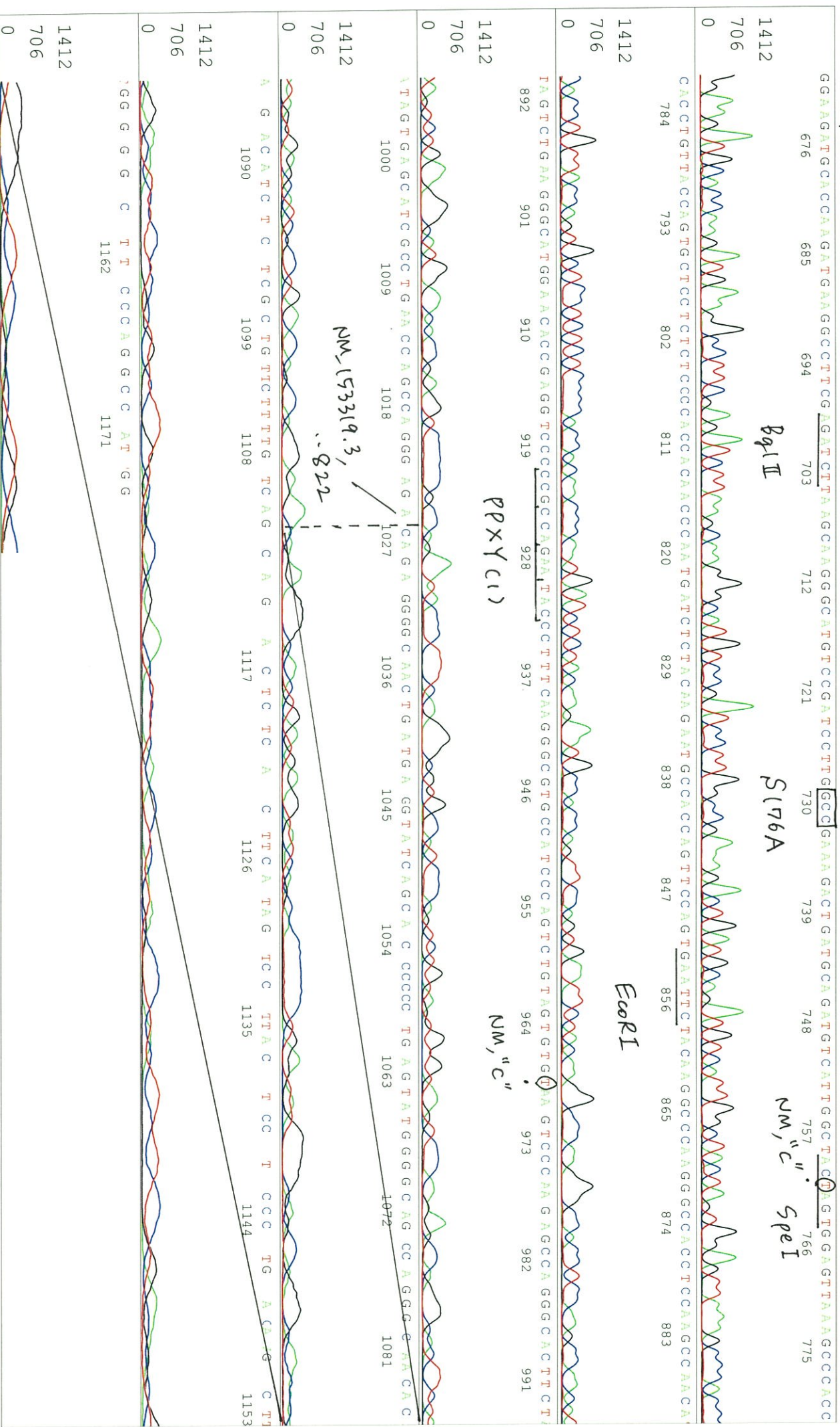
KB 1.4.1.8 Cap:8

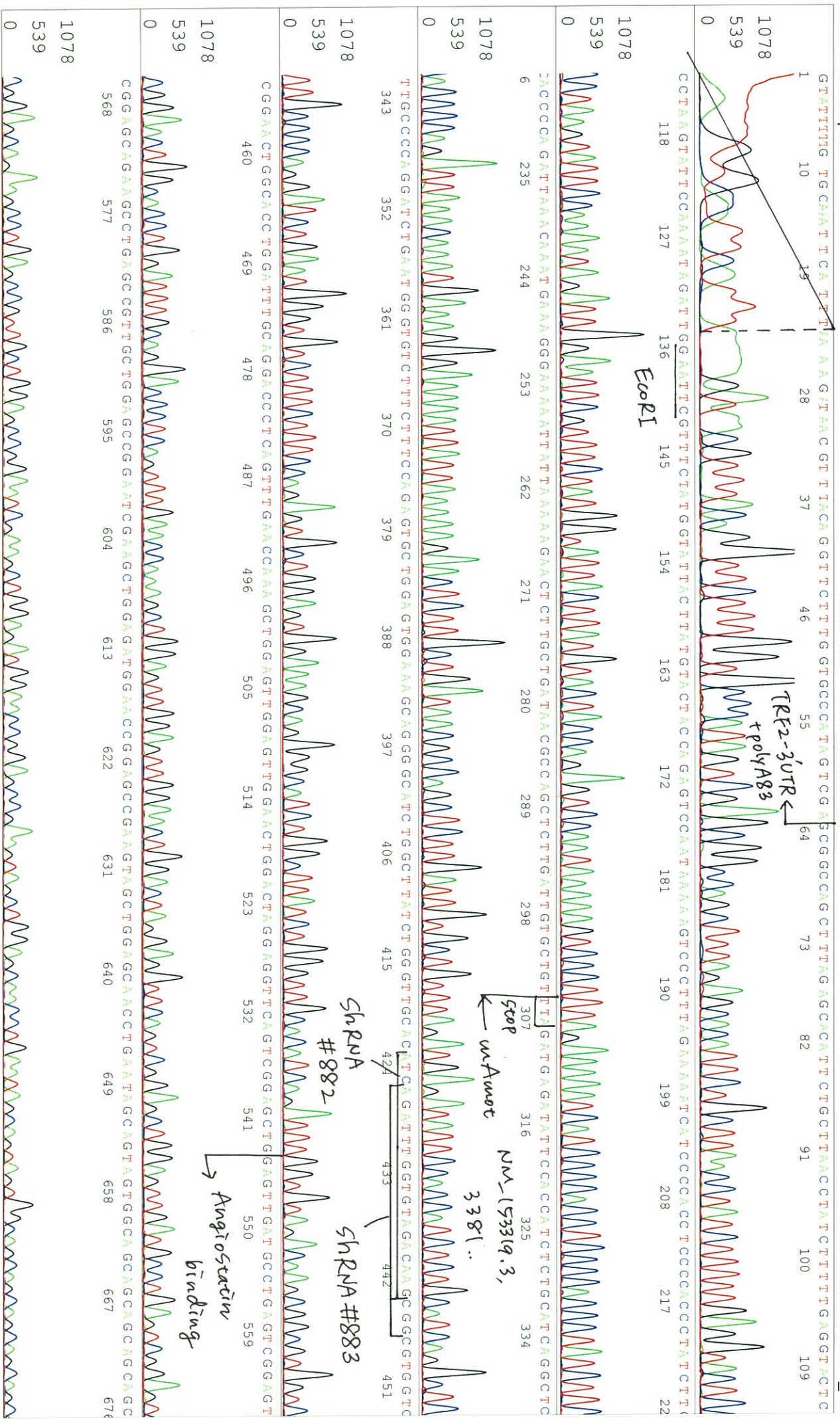
Pis 1306 to 13203 PK1 Loc:1283

Spacing: 11.54 Pts/Panel1350

Version 6.0 HISQV Bases: 1027









SN G:117 A:93 T:90 C:59

primer name C : BGH\_rev

KB\_bcp

Sep 03,2015 03:47PM, JST

KB 1.4.1.8 Cap:14

5-TAGAAGGCACAGTCGAGG-3'

KB\_3500\_POP7\_BDTV3.mob

Sep 03,2015 04:13PM, JST

12208\_12208\_A5Hp\_BGH\_rev\_E11\_14

Pls 1278 to 15000 PK1 Loc:1255

Version 6.0 HISQV Bases: 222

Spacing:11.53 Pts/Panel1350

1184

12208\_12208\_A5Hp\_BGH\_rev\_E11\_14

Pls 1278 to 15000 PK1 Loc:1255

Version 6.0 HISQV Bases: 222

592

Pls 1278 to 15000 PK1 Loc:1255

Version 6.0 HISQV Bases: 222

Spacing:11.53 Pts/Panel1350

0

Pls 1278 to 15000 PK1 Loc:1255

Version 6.0 HISQV Bases: 222

Spacing:11.53 Pts/Panel1350

1184

Pls 1278 to 15000 PK1 Loc:1255

Version 6.0 HISQV Bases: 222

Spacing:11.53 Pts/Panel1350

592

Pls 1278 to 15000 PK1 Loc:1255

Version 6.0 HISQV Bases: 222

Spacing:11.53 Pts/Panel1350

0

Pls 1278 to 15000 PK1 Loc:1255

Version 6.0 HISQV Bases: 222

Spacing:11.53 Pts/Panel1350

1184

Pls 1278 to 15000 PK1 Loc:1255

Version 6.0 HISQV Bases: 222

Spacing:11.53 Pts/Panel1350

592

Pls 1278 to 15000 PK1 Loc:1255

Version 6.0 HISQV Bases: 222

Spacing:11.53 Pts/Panel1350

0

Pls 1278 to 15000 PK1 Loc:1255

Version 6.0 HISQV Bases: 222

Spacing:11.53 Pts/Panel1350

1184

Pls 1278 to 15000 PK1 Loc:1255

Version 6.0 HISQV Bases: 222

Spacing:11.53 Pts/Panel1350

592

Pls 1278 to 15000 PK1 Loc:1255

Version 6.0 HISQV Bases: 222

Spacing:11.53 Pts/Panel1350

0

Pls 1278 to 15000 PK1 Loc:1255

Version 6.0 HISQV Bases: 222

Spacing:11.53 Pts/Panel1350

1184

Pls 1278 to 15000 PK1 Loc:1255

Version 6.0 HISQV Bases: 222

Spacing:11.53 Pts/Panel1350

592

Pls 1278 to 15000 PK1 Loc:1255

Version 6.0 HISQV Bases: 222

Spacing:11.53 Pts/Panel1350

0

Pls 1278 to 15000 PK1 Loc:1255

Version 6.0 HISQV Bases: 222

Spacing:11.53 Pts/Panel1350

1184

Pls 1278 to 15000 PK1 Loc:1255

Version 6.0 HISQV Bases: 222

Spacing:11.53 Pts/Panel1350

592

Pls 1278 to 15000 PK1 Loc:1255

Version 6.0 HISQV Bases: 222

Spacing:11.53 Pts/Panel1350

0

Pls 1278 to 15000 PK1 Loc:1255

Version 6.0 HISQV Bases: 222

Spacing:11.53 Pts/Panel1350

1184

Pls 1278 to 15000 PK1 Loc:1255

Version 6.0 HISQV Bases: 222

Spacing:11.53 Pts/Panel1350

592

Pls 1278 to 15000 PK1 Loc:1255

Version 6.0 HISQV Bases: 222

Spacing:11.53 Pts/Panel1350

0

Pls 1278 to 15000 PK1 Loc:1255

Version 6.0 HISQV Bases: 222

Spacing:11.53 Pts/Panel1350

S/N G:41 A:24 T:16 C:23

KB.bcp

KB 1.4.1.8 Cap:9

primer name  $\Phi$  : SV40pro\_F

5'-TATTATGACAGAGCCGAGG-3'

12208\_12208\_A5Hp\_SV40pro\_F\_C09\_09

12208\_12208\_A5Hp\_SV40pro\_F

KB\_3500\_POP7\_BDTV3.mob

Pts 1265 to 12824 Pk1 Loc:1242

Version 6.0 HISQV Bases: 1026

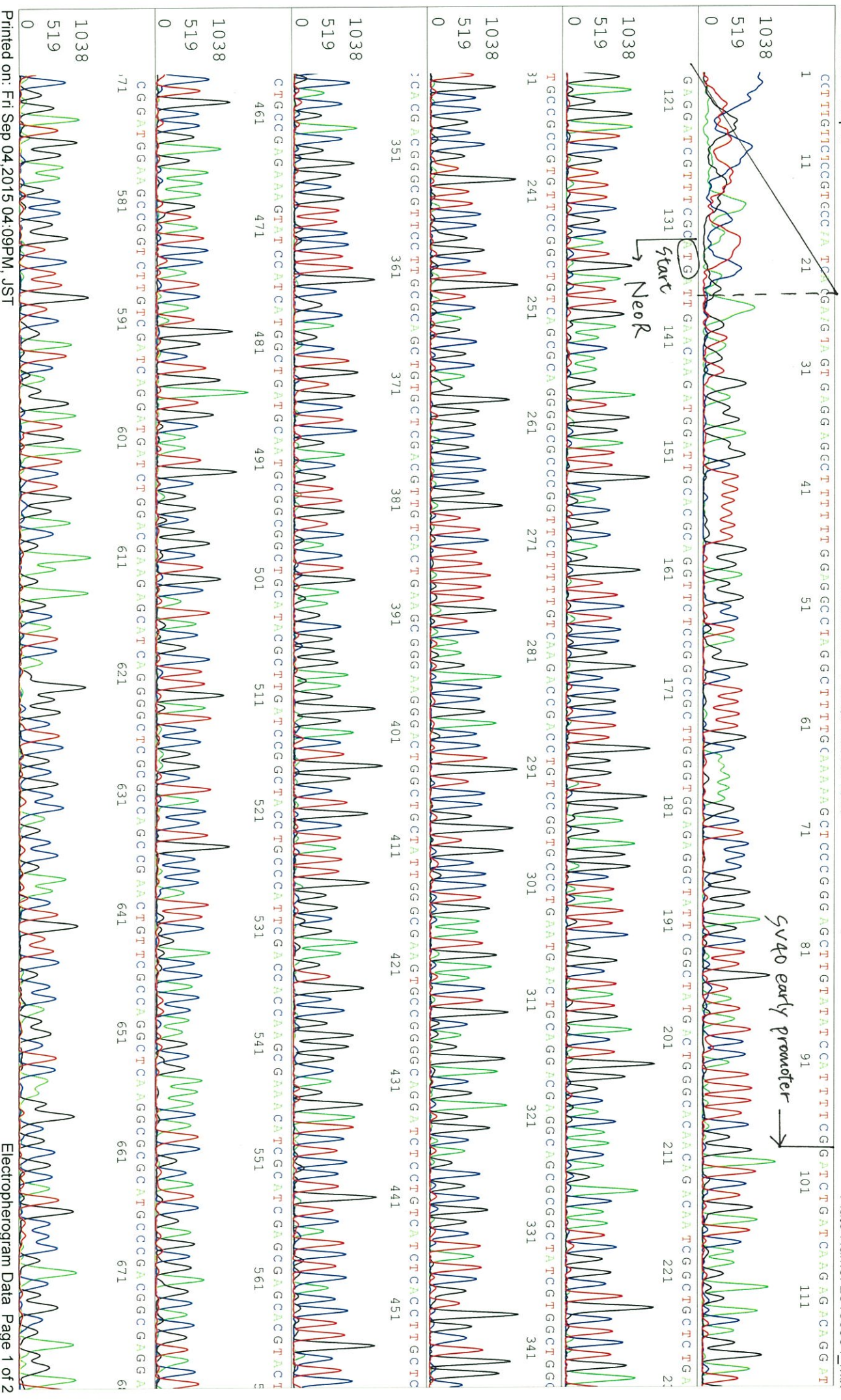
Inst Model/Name 3500/3500 Instrument

Sep 04,2015 02:02PM, JST

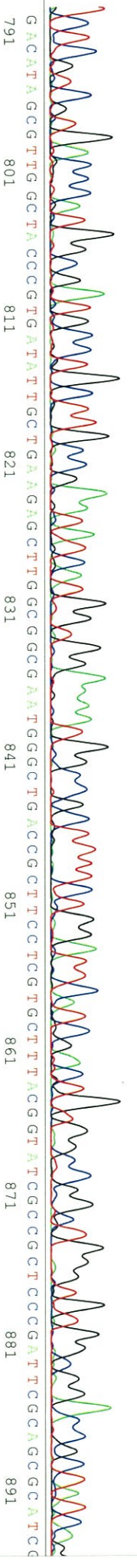
Sep 04,2015 02:31PM, JST

Spacing:11.36 Pts/Panel1350

Plate Name: 20150904\_mix



TCTCGTTCGGTGAACCCATGGCCGATGCGCTGTGCCGAATATCAATGGTGGAAATGGCCGGCTTTCTGGATTCAACGACTGTGGCCGGCTGGGTGGCGGACCGCTATCAF



GACATAGCGTTGGGCTAGCCCGTATGATATGCTGAAGAGCTTGGCGGGAATGGGCTGACCGCTTCCCTGCTTTACGGTATCGGCCCGCTCCCGATTCGGCAAGCCATCC

CCTTCTATTCGCCCTTCTTGAAGA GTTCTTCTGAGCGGAC TCTGGGGTTCGGGAATGACCGAACAA GCGACGCCCAAC TGCCCATCAGAGATTTCGAT

CCAACCGCCGCCCTTCCCTATGAAGAGTTGGGC TTTCCGGAA TCCGTTTTCGGGGACCGCCGGCC TGGGATGATCCCTCCAGCGCGGGGAAATCTCCATGC TTG

AGAGTCTTTCGCCCAACCCAGCCCAACC TTGGTTTAATGCCAGCTATATTTGGTTTAAACAAGTCAAGCAAA TAAAGCCATTC

CACACCAAATCTTTCACCACTGCACTGGAC