

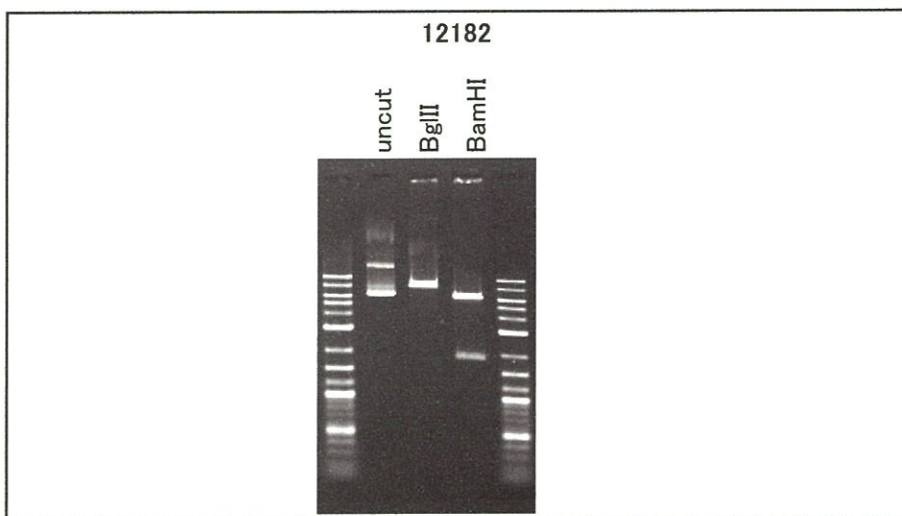
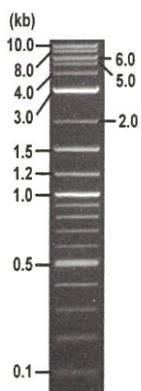


RIKEN DNA BANK

clone name : pMYs-HA-dnYap1-IRES-EGFP

- Clone ID : RDB_12182
- Lot : 12182_A4Bi
- DNA Concentration : 25 nanogram/microliter
- Volume : 40 microliter
- Form : DNA solution in TE buffer
- Host : DH5 alpha
- Culture : LB medium
- Antibiotics : 100 microgram/ml Ampicillin
- Purification : QIAGEN QIAprep Spin Miniprep kit
- Digestion by restriction enzyme

2-Log DNA Ladder
(NEB#N3200L),
125 ng/well



Electrophoresis : 101 nanogram DNA per lane ; 1% agarose gel , 1 x TAE Buffer

Restriction enzyme	Expected size of fragment
<u>BglII</u>	<u>8.0</u> kbp
<u>BamHI</u>	<u>6.1, 1.9</u> kbp
_____	_____ kbp
_____	_____ kbp
_____	_____ kbp

● Confirmation of the insertion sequence

Sequence name	Primer name	Sequence name	Primer name
Sequence - A	5'Retro (pFB-5')	Sequence - E	pMFG_1
Sequence - B	IRES-R	Sequence - F	EGFP-C
Sequence - C	IRES-F	Sequence - G	-
Sequence - D	Amp_R	Sequence - H	-

APPROVED BY :



S/N G:262 A:287 T:194 C:324 primer name A : 5'Retro(PFB-5')

12182_12182_A4Bi_5'Retro
KB_3500_POP7_BDTv3.mob

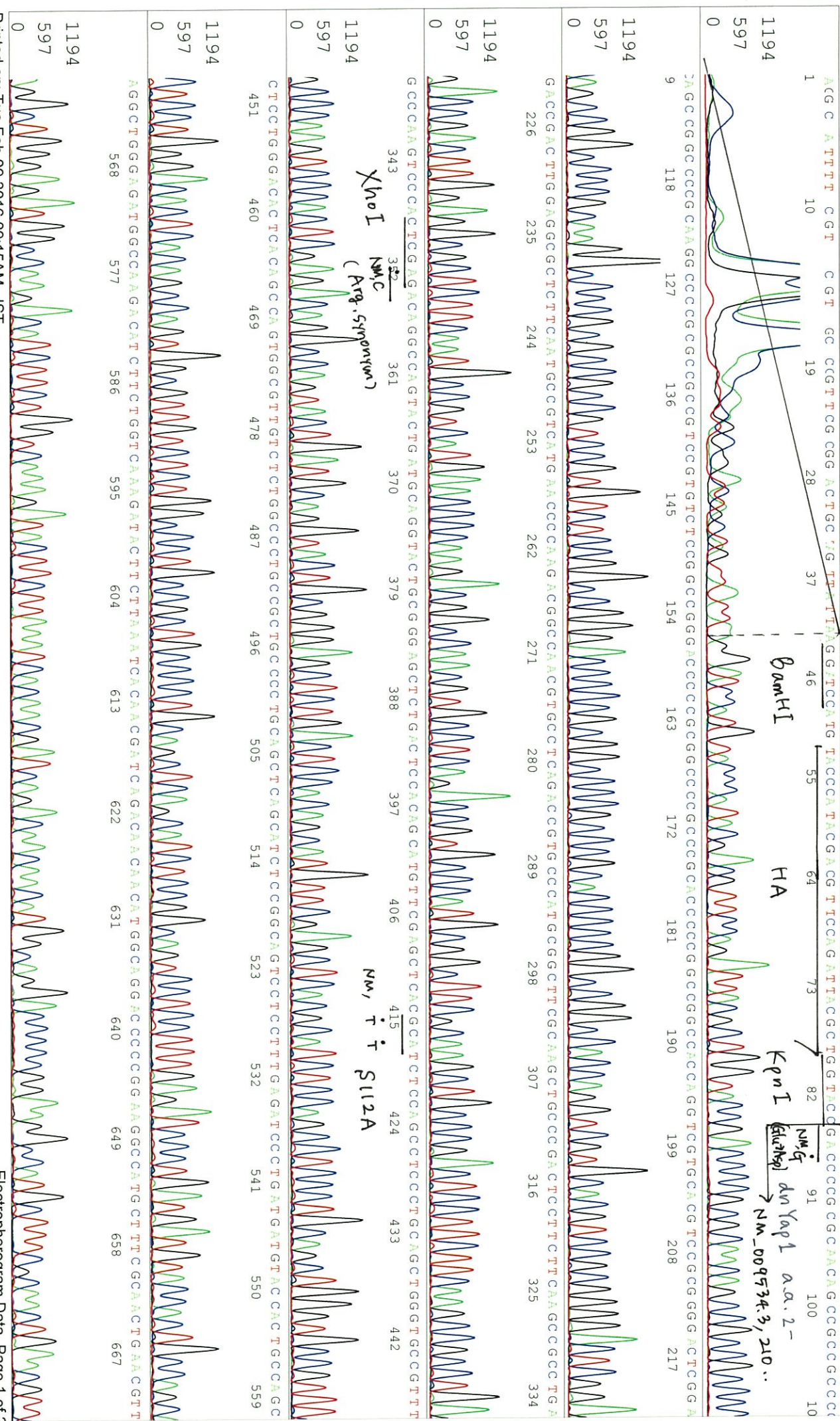
Feb 26, 2014 10:28AM, JST
Feb 26, 2014 10:55AM, JST

KB.bcp KB 1.4.1.8 Cap:16

5-GGCTGCCCGAACCCCGGGGTG-3'

Pfs 1197 to 13593 PK1 Loc:1174
Version 6.0 HISQV Bases: 1022

Spacing:11.96 Pfs/Panel1350
Plate Name: 20140226_mix



S/N G:262 A:287 T:194 C:324

12182_12182_A4Bi_5Retro

Feb 26, 2014 10:28AM, JST

KB.bcp

KB_3500_POP7_BDTV3.mob

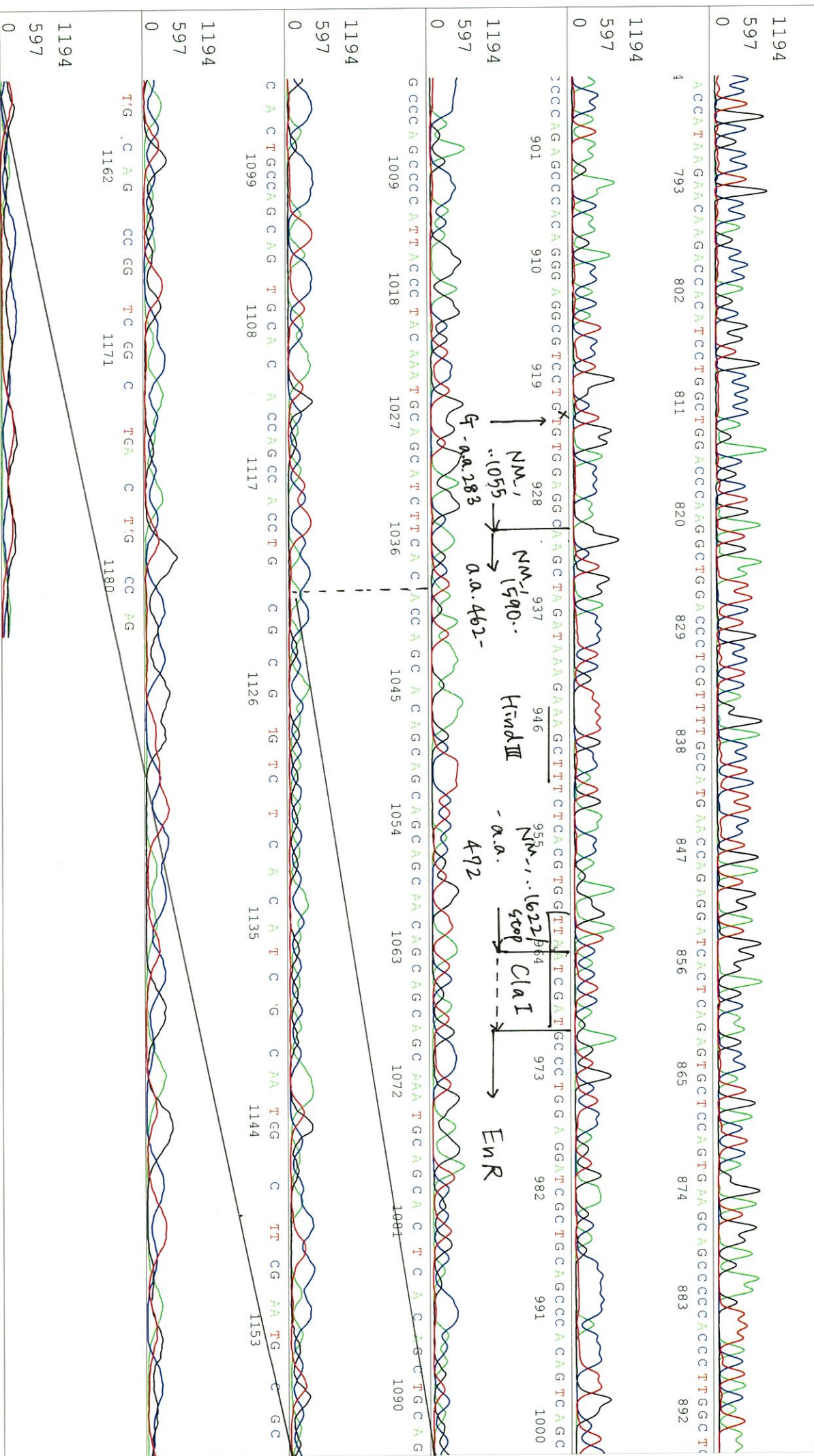
Feb 26, 2014 10:55AM, JST

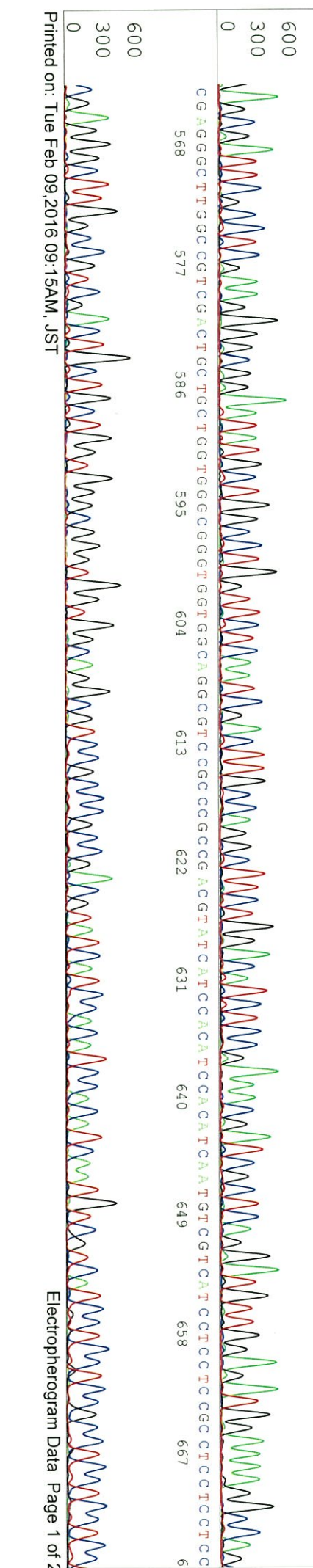
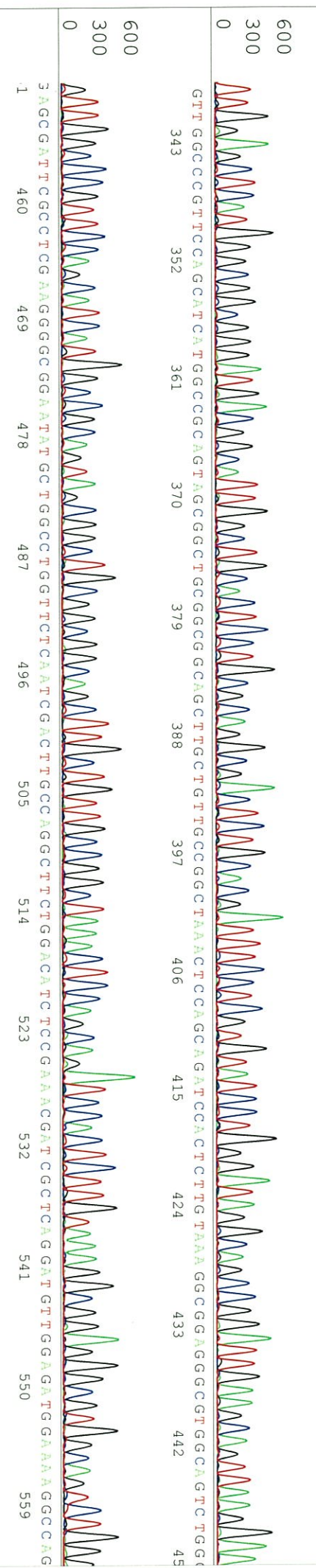
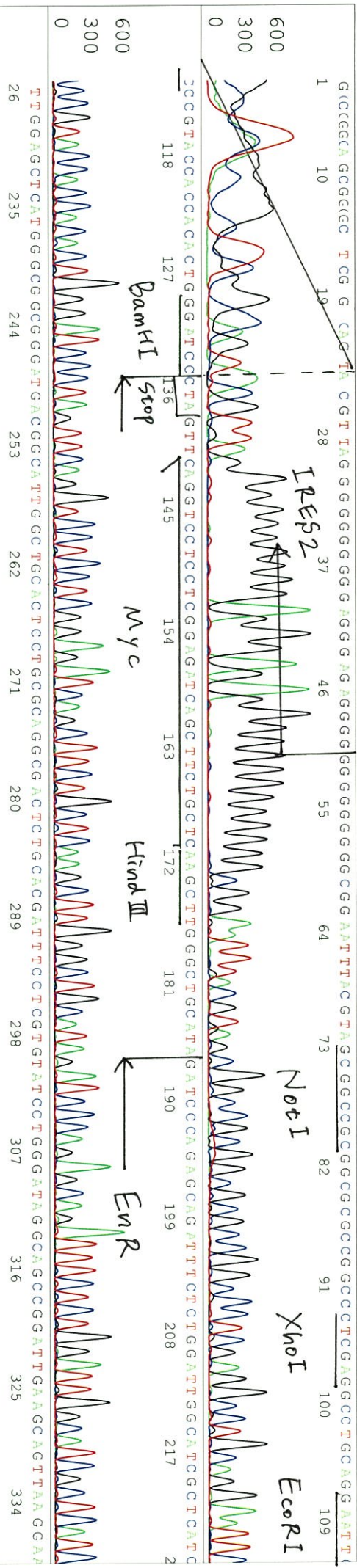
KB 1.4.1.8 Cap:16

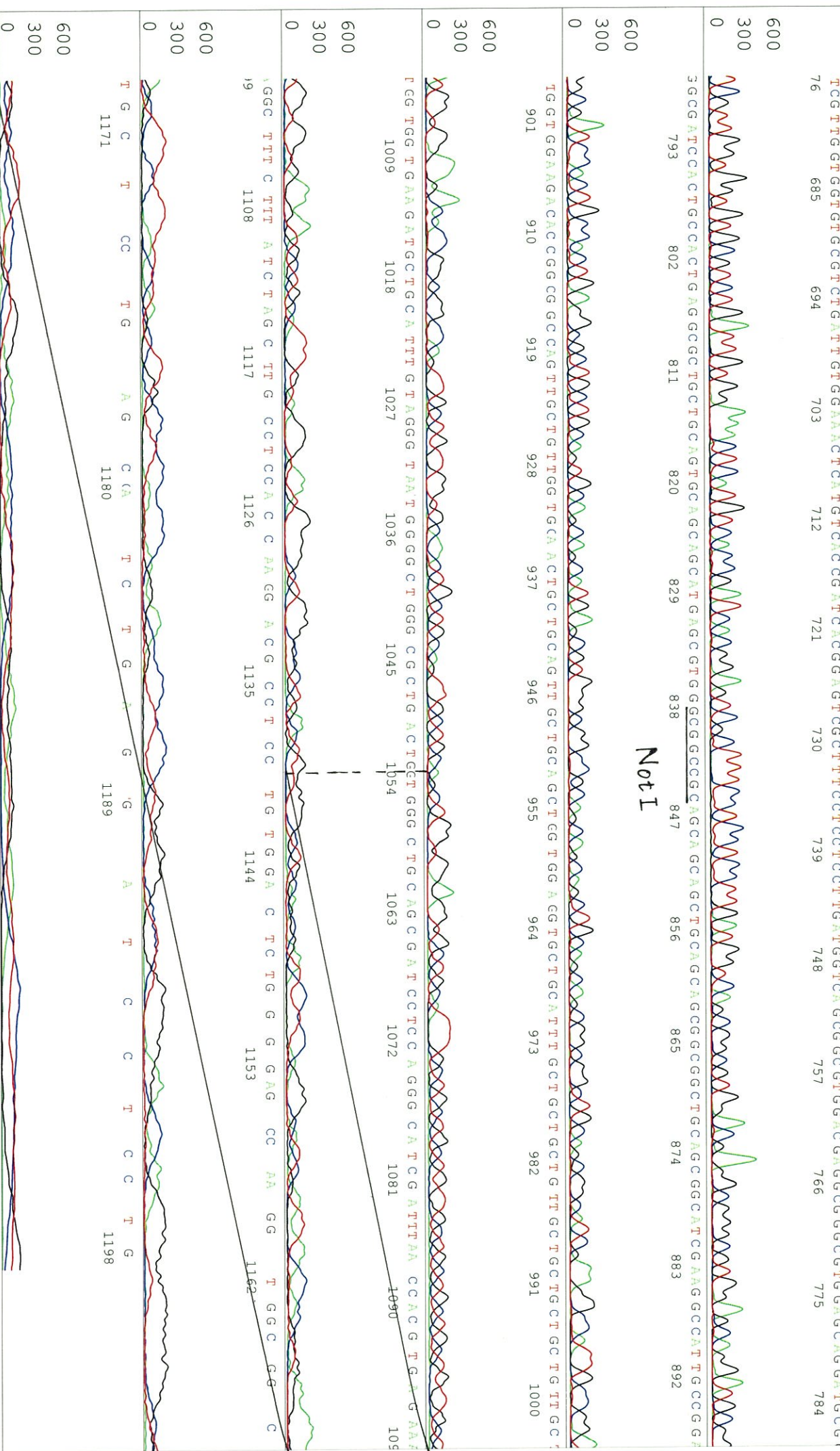
Pls 1197 to 13593 PK1 Loc:1174

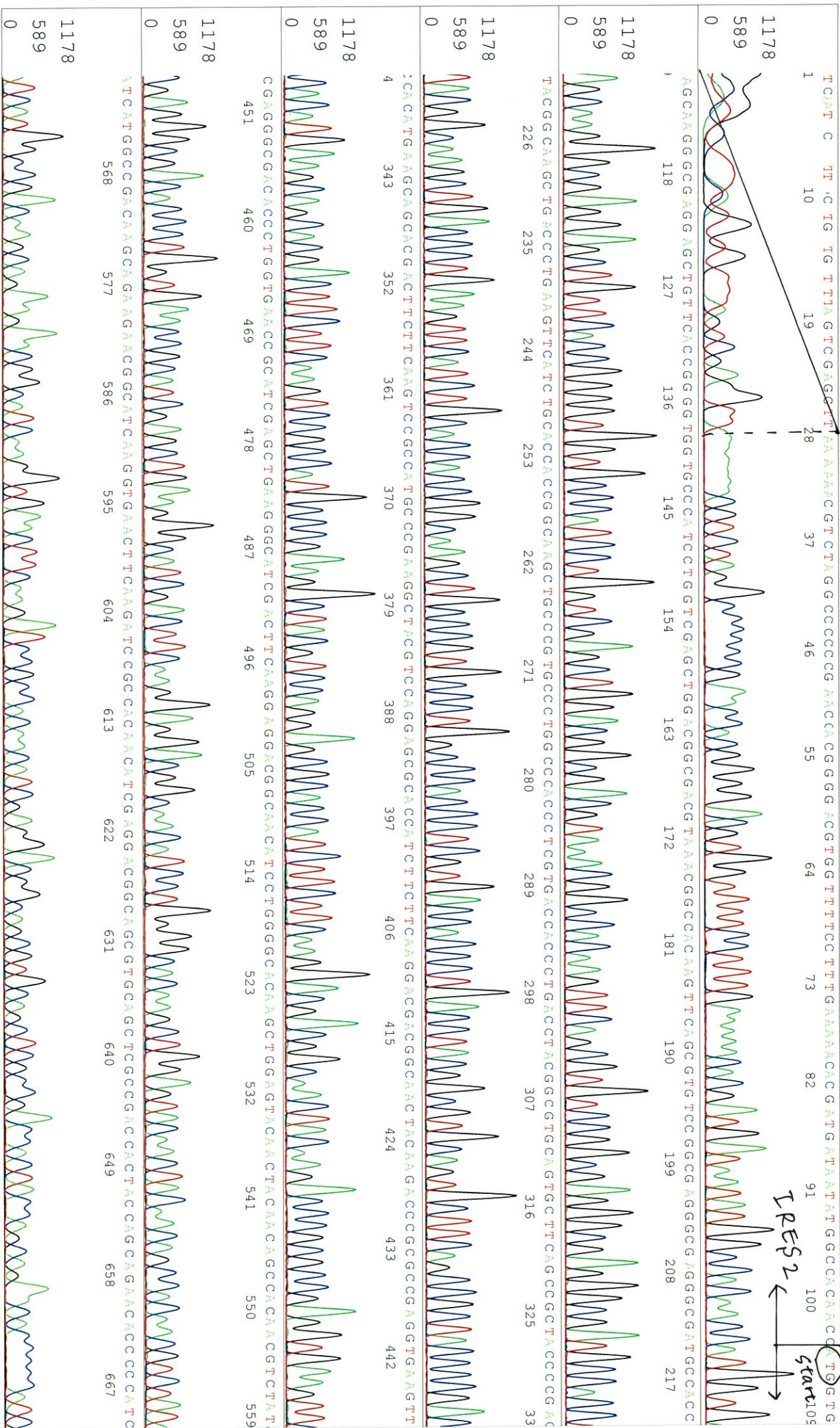
Spacing:1.96 Pts/Panel1350

Version 6.0 HISQV Bases: 1022









S/N G:324 A:330 T:263 C:468

12182_12182_A4BI_IRES_F

Feb 05, 2016 10:05AM, JST

KB.bcp

KB_3500_POP7_BDTV3.mob

Feb 05, 2016 10:40AM, JST

KB 1.4.1.8 Cap:3

Pts 1611 to 13438 PK1 Loc:1588

Spacing:11.81 Pts/Panel1350

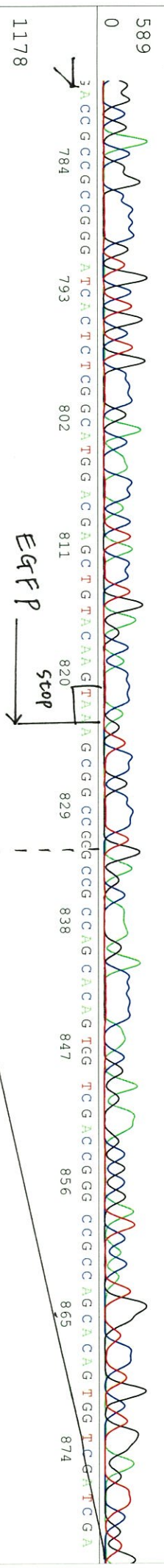
KB 1.4.1.8 Cap:3

Version 6.0 HISQV Bases: 930

Plate Name: 20160205_mlx

(Primer F)

G G C G A C G G C C C C G T G C T G C C T G C C C C G A C A A C C A C T A C C T G A G C A C C C C A G T C C C G C C T G A G C A A A G A C C C C A A C G A G A A G C C G C G A T C A C T G G T C C T G C T G G A G T T C G T C



883 892 901 910 919 928 937 946 955 964 973
G G G G G G C C C G C G A T T A G T C C A A T T T G T T A A G A C A E G A T A T C A G T G G T C C A E G C T C T A G T T T T G A C T C A A C A A T A T C A C C A G C T G A A G C C T T A T A C

982 991 1000 1009 1018 1027 1036 1045 1054
A G T A C G A G C C C A T A G A T A G A T A A G A T T T T T T A T T A G T C T C C A G A A A A A G G G G G A A T G A A E G A C C C C A C C T G T A G T T T

1063 1072 1081 1090 1099 1108
G G C A G C T A G C T A G T A C G C C A T T T G C C A G C C A T E G T A A A T T A C G T T A A C C T G G A G C

1117
T G A A G A A G G T C

1178 589
0

1178 589
0

S/N G:301 A:304 T:328 C:407

primer name D : Amp_R

12182_12182_A4Bi_Amp_R

Feb 03,2016 07:49PM, JST

KB.bcp

5'-GGCAGACGGAATGTTGAATA-3'

KB_3500_POP7_BDTV3.mob

Feb 03,2016 08:15PM, JST

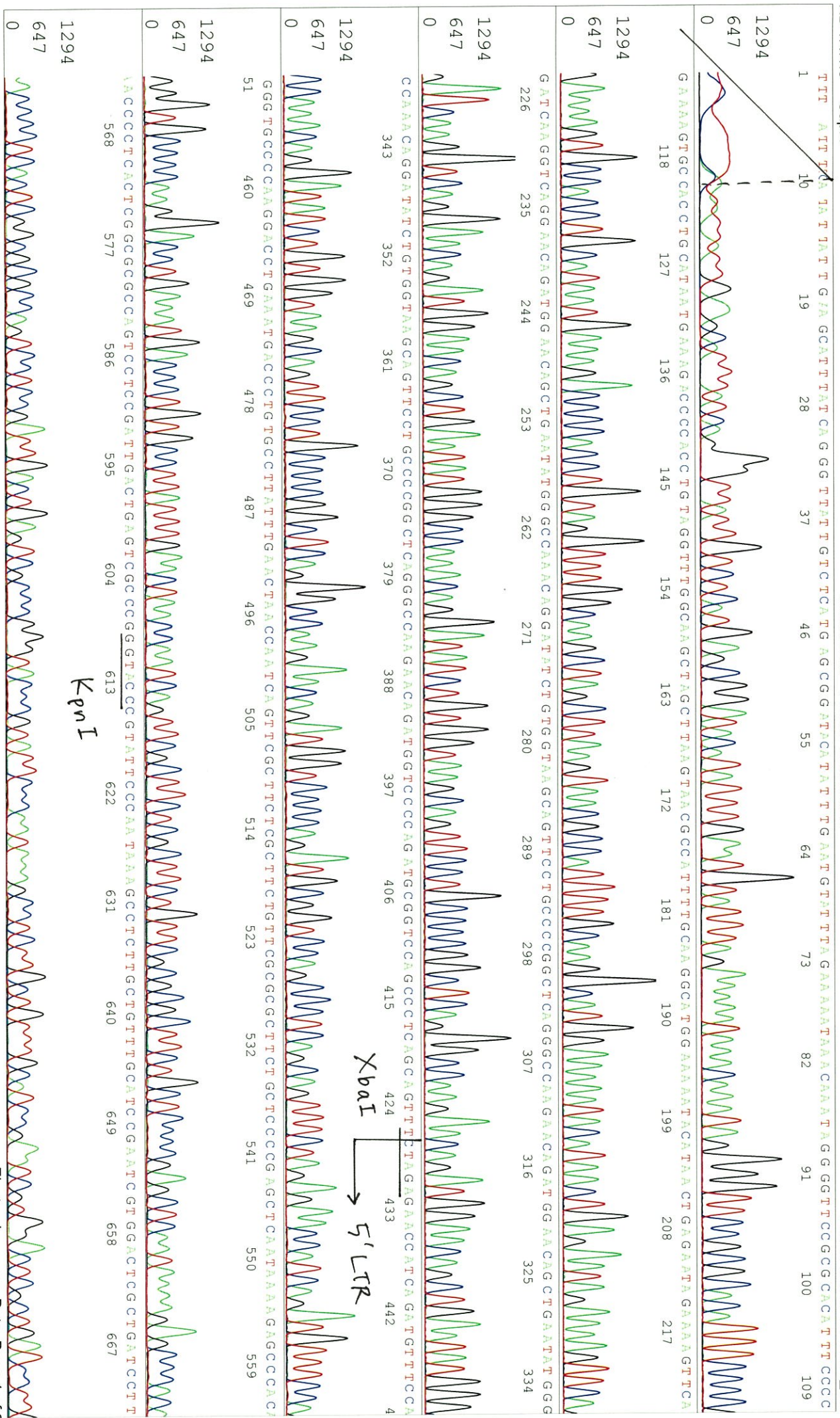
KB 1.4.1.8 Cap.4

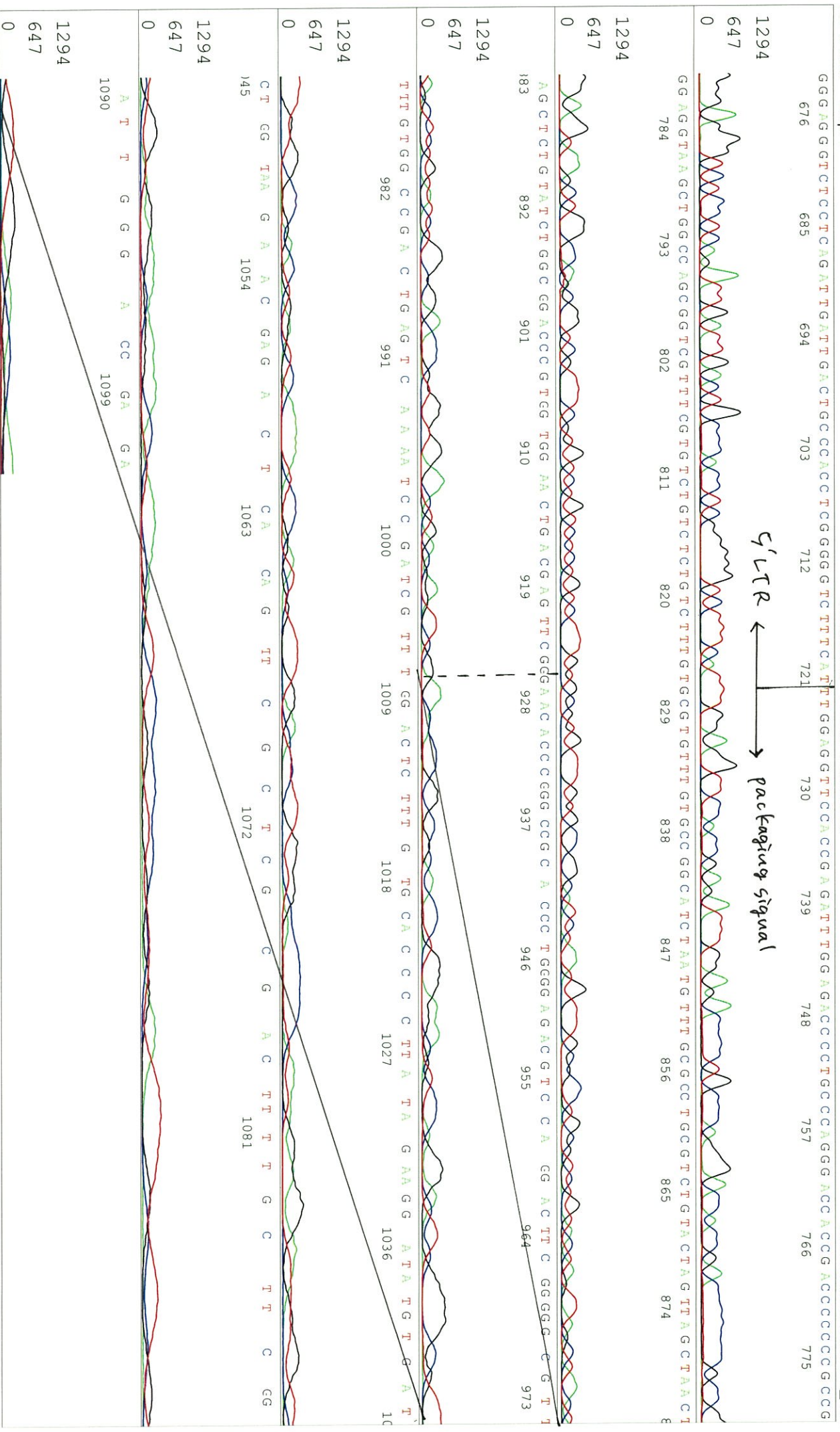
Pls 1444 to 13176 PK1 Loc:1421

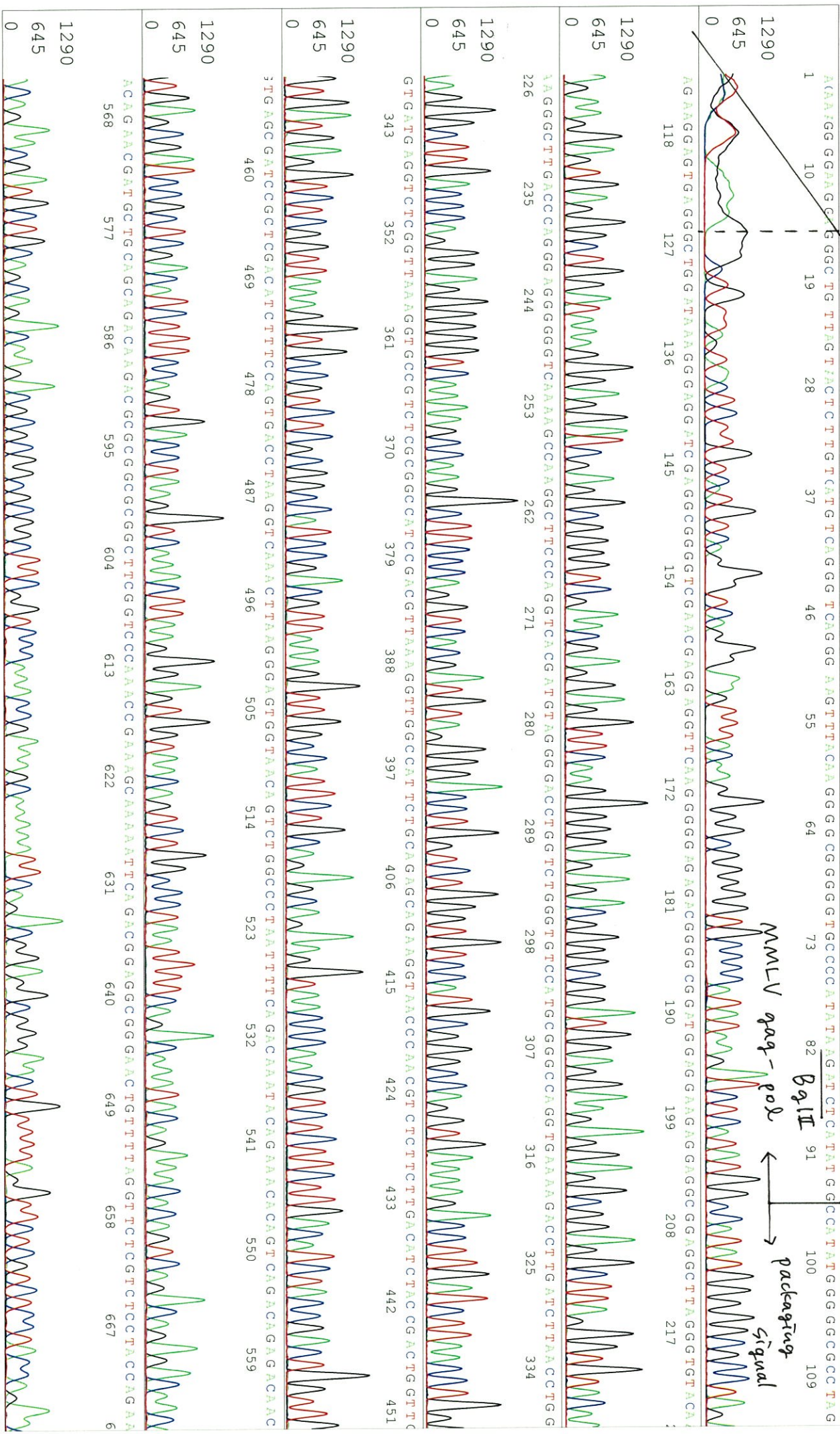
Spacing:1.69 Pts/Panel1350

Version 6.0 HiSQV Bases: 929

Plate Name: 20160203_mlx







S/N G:126 A:141 T:91 C:130

12182_12182_A4BI_pMFG_1

Feb 05,2016 10:05AM, JST

KB.bcp

KB_3500_POP7_BDTV3.mob

Feb 05,2016 10:40AM, JST

KB 1.4.1.8 Cap:6

Pts 1512 to 13150 PK1 Loc:1489

Spacing:11.64 Pts/Panel1350

Version 6.0 HISQV Bases: 972

