

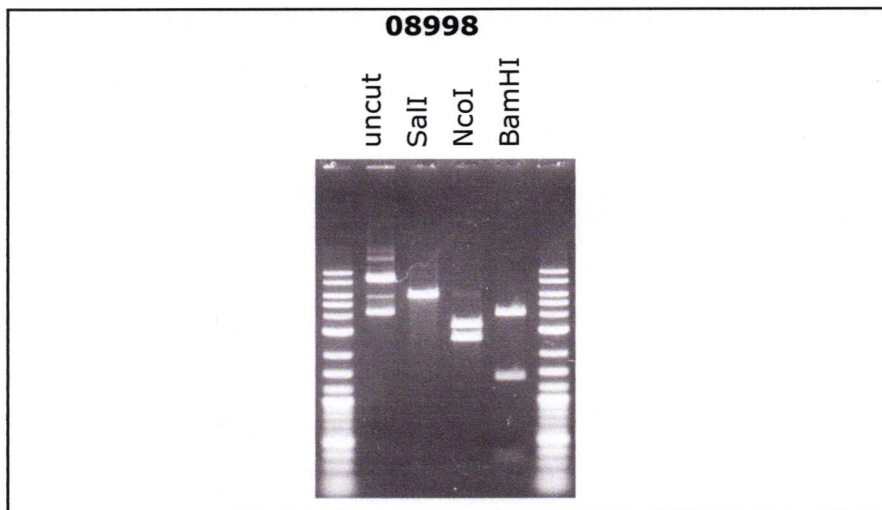
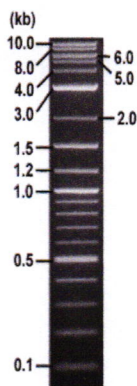


**RIKEN DNA BANK**

clone name : **pCAGGS-Cre**

- **Clone ID** : RDB \_ 08998
- **Lot** : 08998 \_ A3C7
- **DNA Concentration** : 25 nanogram/microliter
- **Volume** : 40 microliter
- **Form** : DNA solution in TE buffer
- **Host** : DH5 alpha
- **Culture** : LB medium
- **Antibiotics** : 100 microgram/ml Ampicillin
- **Purification** : QIAGEN QIAprep Spin Miniprep kit
- **Digestion by restriction enzyme**

1 kb Plus DNA Ladder  
(NEB#N3200L),  
250 ng/well



Electrophoresis : 100 nanogram DNA per lane ; 1% agarose gel , 1 x TAE Buffer

Restriction enzyme	Expected size of fragment
<b>SalI</b>	<b>5.9</b> kbp
<b>NcoI</b>	<b>3.3, 2.6</b> kbp
<b>BamHI</b>	<b>4.1, 1.4, 0.3</b> kbp
	kbp

● **Confirmation of the insertion sequence**

Please be sure to check our sequence analysis results before your request.

Sequence name	Primer ID	Primer name	Confirmed feature
Sequence - A	Pr0495	pCAG-F_V3	CAG pro, insert 5'(Cre)
Sequence - B	Pr0614	pCAGGS_R1	beta-globin pA,insert 3'(Cre)
Sequence - C	-	-	-
Sequence - D	-	-	-
Sequence - E	-	-	-
Sequence - F	-	-	-
Sequence - G	-	-	-
Sequence - H	-	-	-

APPROVED BY :

