



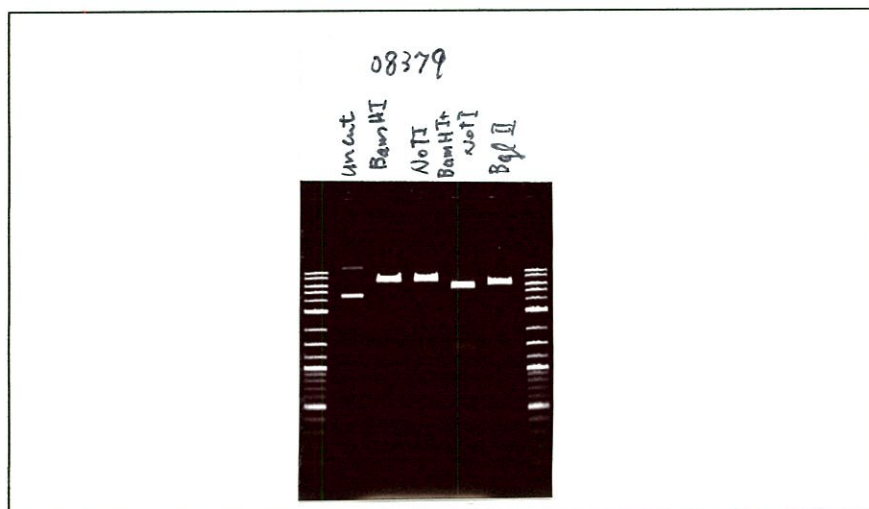
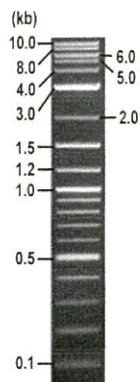
**RIKEN DNA BANK**

clone name : pMx-E4BP4(Nfil3)

- Clone ID : RDB \_ 08379
- Lot : 08379 \_ A5Bc
- DNA Concentration : 25 nanogram/microliter
- Volume : 40 microliter
- Form : DNA solution in TE buffer
- Host : DH5 alpha
- Culture : LB medium
- Antibiotics : 100 microgram/ml Ampicillin
- Purification : QIAGEN QIAprep Spin Miniprep kit

● Digestion by restriction enzyme

2-Log DNA Ladder  
(NEB#N3200L),  
125 ng/well



Electrophoresis : 44 nanogram DNA per lane ; 1% agarose gel , 1 x TAE Buffer

Restriction enzyme	Expected size of fragment
<u>BamHI</u>	<u>7.4</u> kbp
<u>NotI</u>	<u>7.4</u> kbp
<u>BamHI + NotI</u>	<u>5.9, 1.5</u> kbp
<u>BglII</u>	<u>6.7, 0.7</u> kbp
	kbp

● Confirmation of the insertion sequence

Sequence name	Primer name
Sequence - A	pBABE5'
Sequence - B	IRES-R
Sequence - C	-
Sequence - D	-

APPROVED BY :



S/N G:1225 A:1240 T:672 C:970

primer name A : pBABES'

KB\_bcp KB\_3500\_POP7\_BDTV3.mob

Feb 20,2015 09:53AM, JST

KB 1.4.1.8 Cap:11

5-CTTATCCAGCCCTCAC-3'

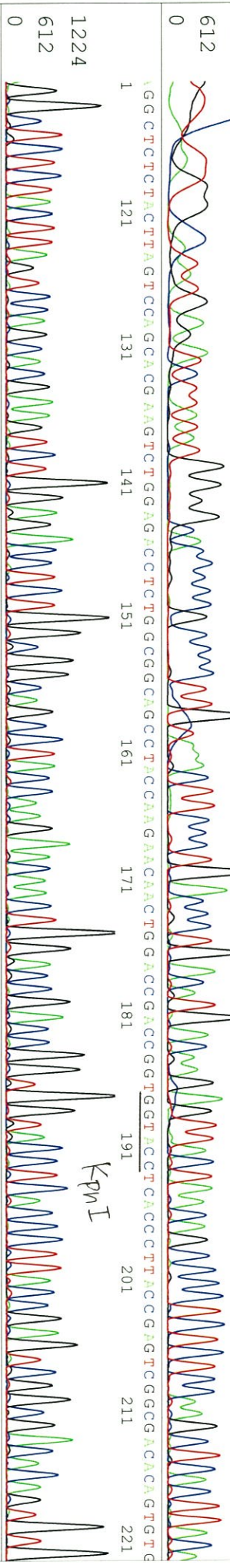
Pts 1433 to 12909 PK1 Loc:1410

Feb 20,2015 10:19AM, JST

AGCG A TTG G CATA TG AG /TCTTATAT G GGGC /CCCCCG CCCCC TCTTAACCTT CCCTG ACCCTG ACA TG ACAAGAGTTACTAA CAGCCCCCT CTTCCAAAGCTCAC TTA CF

Bgl II

Kpn I

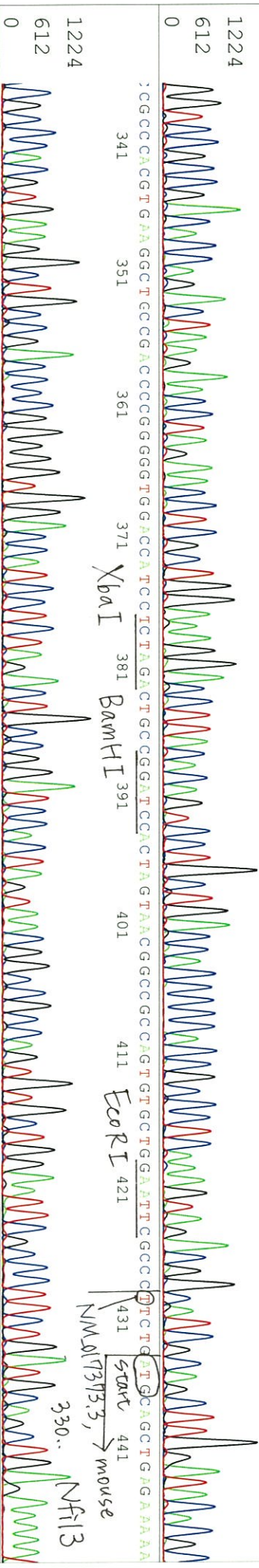


Xba I

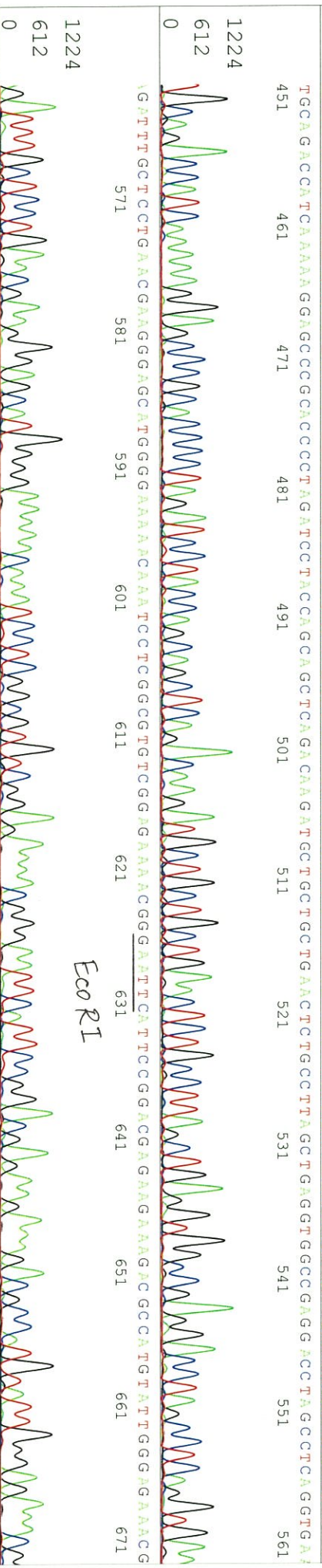
BamHI

Eco RI

START 441 NFI13 330.. mouse



Eco RI



S/N G:1225 A:1240 T:672 C:970

08379\_08379\_A5Bc\_pBABE5

Feb 20, 2015 09:53AM, JST

KB.bcp

KB\_3500\_POP7\_BDTV3.mob

Feb 20, 2015 10:19AM, JST

KB 1.4.1.8 Cap:11

Pts 1433 to 12909 PK1 Loc: 1410

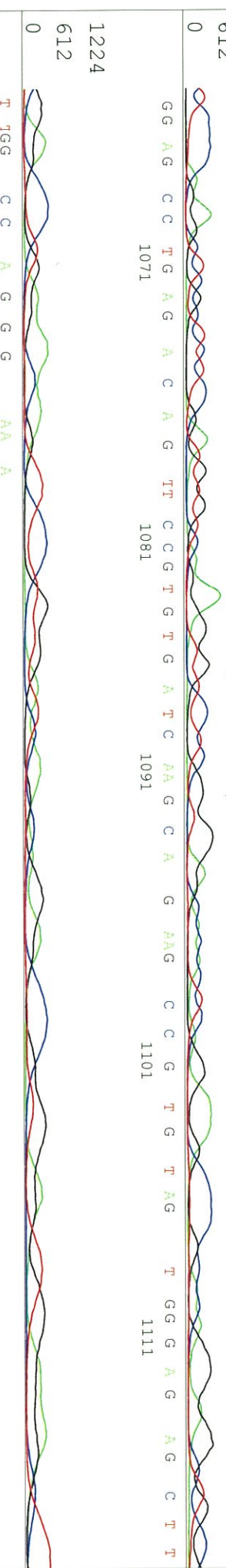
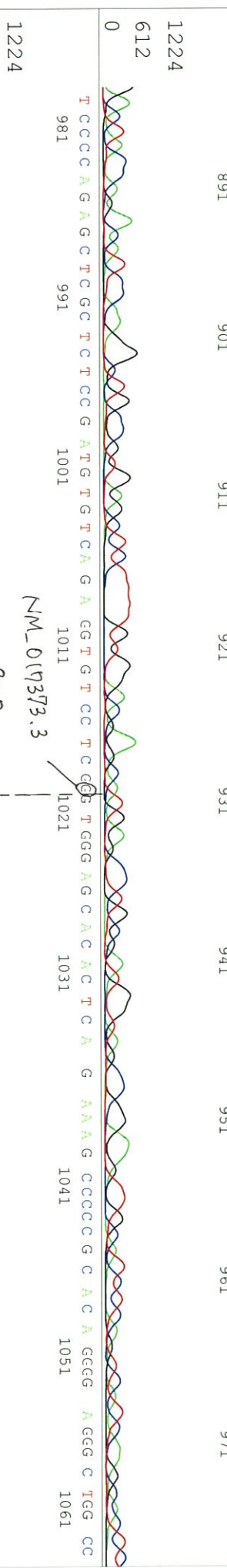
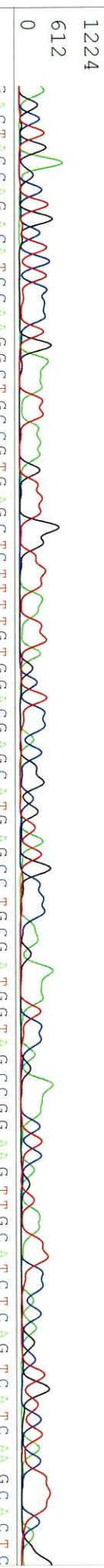
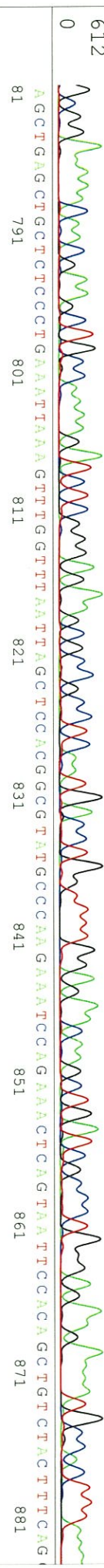
Spacing: 11.35 Pts/Panel1350

Version 5.4 HiSQV Bases: 977

Plate Name: 20150220\_mix

Bq1D

CGG G A A A A A C C A A C G A A G C T G C C A A A A G A T C T C G G G A A G C C G C C T C A A T G A C C T G G T T T G A A G A C A A G C T G A T C G C C T G G G A A G A P A A T G C C A C T T T A A A



S/N G:118 A:103 T:83 C:91

primer name  $\beta$  : IRES-R

KB\_bcp KB\_3500\_POP7\_BDTV3.mob

Feb 20,2015 09:53AM, JST

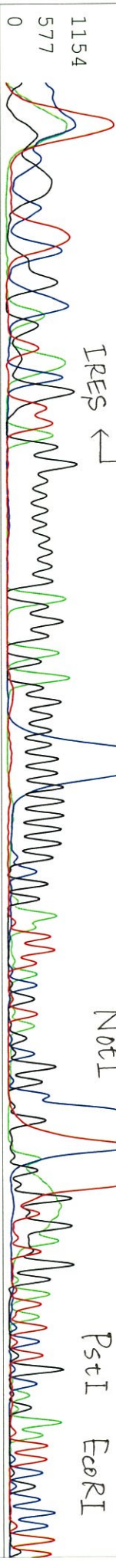
KB 1.4.1.8 Cap:14

5'-ACATATAGACAAACGCACACC-3'

Pis 1395 to 12903 PK1 Loc:1372

Feb 20,2015 10:19AM, JST

CCC (CG C GGC TCGG (AG T A CGT TAG GGGGGGGG GGGAGAGGGGGGGGGGGAATTTACGTAGCGGCCCGCCAGGGGATGGATATCTGCAGAAATTCCGCCCTT



GCAGCCATTACCCGAGGTCGGAAGCCGAGATCGGTTGTGGCTATGATCTCTTGAAGGAGACCACCTCTGCAGATAAGTTTGGCTATCCCTGCCTCAAAATCAAAATCTC  
111 Stop121 131 141 151 161 171 181 191 201 211 2:  
NM-D19373,3 (1731..CC) mouse NF13 PstI

CAGGCTTCGGAAAACCTTATAGCCACCGCTCTTTGACTCCACCACACTGTTTGAAGCTACTCTGAGTTTGGCTGCTCAGTTCCTTGTGATGCCAGTGTTCGGATTGA  
21 231 241 251 261 271 281 291 301 311 321 331

CAATCTGAAATGTTCTCGTCACTGCACTGAGAAAGGAGGAAAGGAAATGGGCCATACCAGGTTCCATGTTCTCCAGGTCAAAAATGCTCTTTGGCCGATCGCCGGG  
341 351 361 371 381 391 401 411 421 431 441

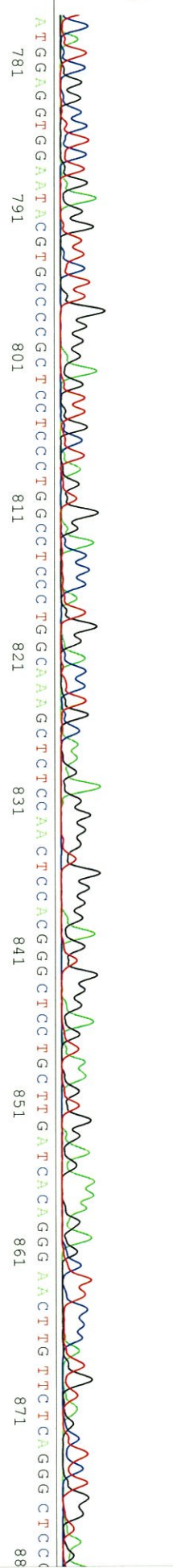
TGAAGAGAGTCTCTGCATGCCCTTCAAACTCGCTTCCAAAGCCCTCCACTTTGACCCTGCATGGCCCTTAAATCCGAAAGCTTGTGCCGTAAGGCAGAAAGGTTCACTTCCG  
451 461 471 481 491 501 511 521 531 541 551

GAACTTCAACCAACCGTGGCGTGGACCCGTTGCAAGCTCCCTGGAGAAATGATGGGGCCCTTAAGGACCTGTTGTTCCCTTCCCATCAGAAGACTTGCCCACTACACCC  
561 571 581 591 601 611 621 631 641 651 661

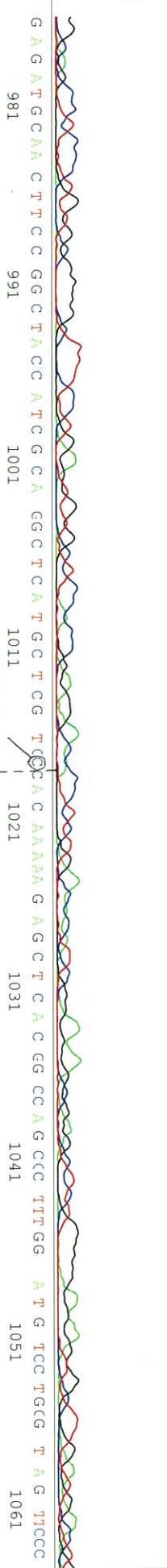
ApaI

Printed on: Fri Feb 20, 2015 12:56PM, JST Electroherogram Data Page 1 of 2

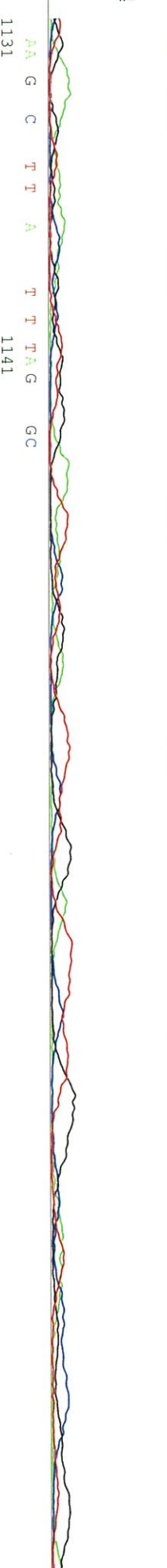
TCATCGGCGCTCTGAGGTCTTGCGGAGTTGCTAGTGGACCCATGGACCTGCAGAGGGGGTGGGGAAGTAAAGTGAAGAAAGCTTCCCATTGTAAGCTCTGCTAG



ATGGAGGTGGAAATACGTGCCCGCCCTCCCTCCCTGGCCCTCCCTGGCAAAAGCTCTCCAACTCCACGGGCTCCCTGATCAAGGAAACTGTCTCAGGGCTCC



GGAGCTCCCTGTGGCGGGCTTCTCCCTGAGTGTGCTCCAGGAGGACACCTCTGACACAACCGGAGAGGCTCTGGGGAGAGGCTTGATGAC T



TGGAAAAGTTAGAACAGCTGGTGGAAATACCTGAGATGCTCCCTGATTTTCTCGTGCCAAATACGCCTGTGGAA