

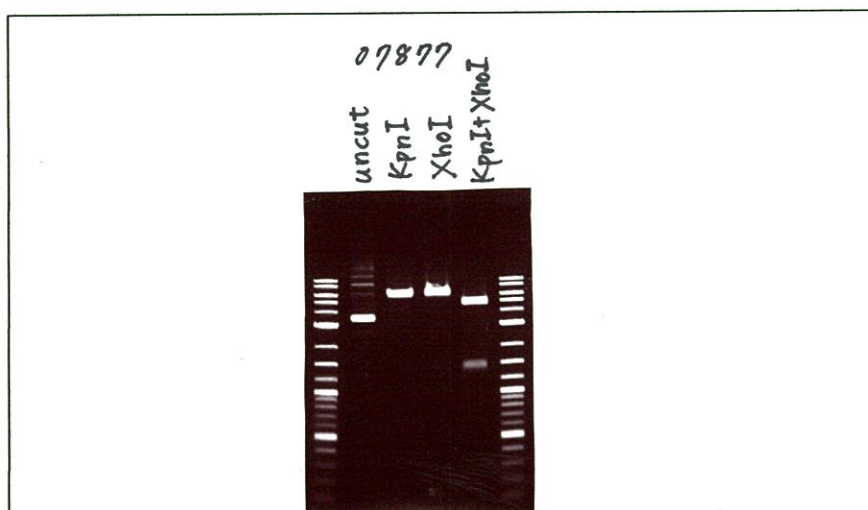
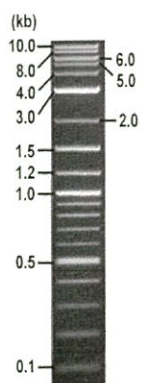


RIKEN DNA BANK

clone name : pGL3-AID R4 mut. NF-kB-2

- Clone ID : RDB_07877
- Lot : 07877_A4Gi
- DNA Concentration : 25 nanogram/microliter
- Volume : 40 microliter
- Form : DNA solution in TE buffer
- Host : DH5 alpha
- Culture : LB medium
- Antibiotics : 100 microgram/ml Ampicillin
- Purification : QIAGEN QIAprep Spin Miniprep kit
- Digestion by restriction enzyme

2-Log DNA Ladder
(NEB#N3200L),
125 ng/well



Electrophoresis : 45 nanogram DNA per lane ; 1% agarose gel , 1 x TAE Buffer

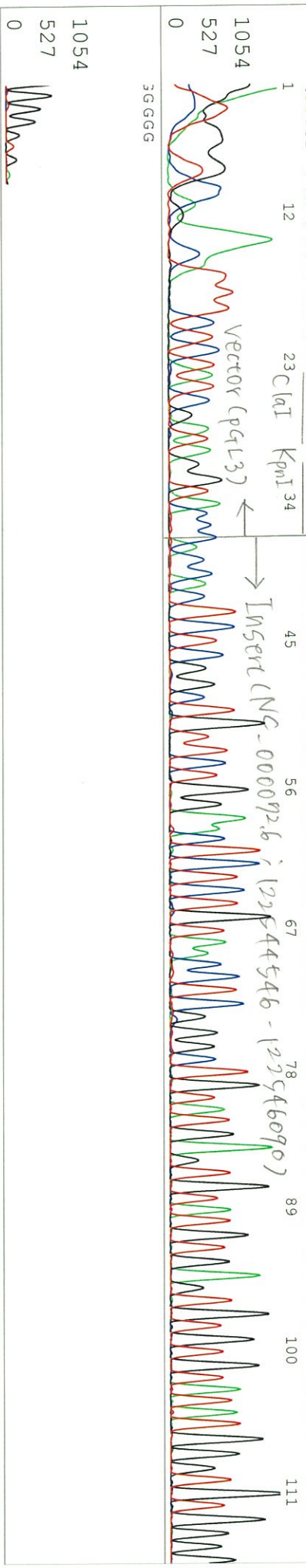
Restriction enzyme	Expected size of fragment
<u>KpnI</u>	<u>6.6</u> kbp
<u>XhoI</u>	<u>6.6</u> kbp
<u>KpnI + XhoI</u>	<u>5.1, 1.5</u> kbp
	kbp
	kbp

● Confirmation of the insertion sequence

Sequence name	Primer name
Sequence - A	pGL4-4174F
Sequence - B	Luc_R
Sequence - C	R4-M_R
Sequence - D	-

APPROVED BY :





S/N G:118 A:123 T:107 C:124

primer name **P** : Luc_R

KB_bcp KB_3500_POP7_BDTV3.mob

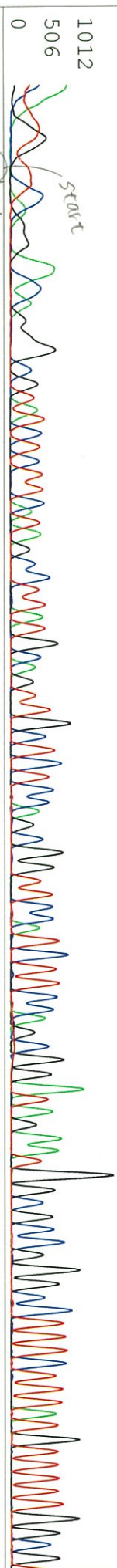
Pis 1447 to 13298 Pk1 Loc:1424

Version 5.4 HiSQV Bases: 971

KB 1.4.1.8 Cap:5

5-ATGTCACACCTCGATATGTG-3'

1 CTTGGC TTCA GG AACAGGGCGTATCTCT (ATA GCCCT TAT GCA GT TGCTCTC CAG CGGTCCCA TCTTCCAGCGG ATAGAA TGGCCGCCGG CCTTCTTTATGTTTGGCG



121 TCTTCCATGGATTCGGTCTCCAGCGTGACTTTCTTGACTCCCTCAAAAGTCTTAGGCCAAAGAAAGCTTGGTTCAAAGCGCAAGGCTGCTTCAAGTGTGTTGTGTGACAGAACCTGGC
 luciferase - 121
 vector (pqr3) - 131
 Insert (NC_000092.6; 12253901-12253986) 141 151 161 171 181
 HindIII 181

231 CCCTGGCATTCAAATCTGA GCTTGCCTTGTGGCTCCCTCCCCACGACAGCATCACTACCA CCA GGTATCCAAACATCTGCCCTCCTGGGTTGGGTC CAGTAAAGATGGCGGGG
 241 251 261 271 281 291 301 311 321 331 341

351 CTGTGGTGGGCAAAAGCCACACCGGATTAATGATTTGGGGGGGGCCAGTTCTGCTCATGCTTAATGTCCAACTTCTTCCGAGGCTGTTCTTAAACTCGAGCTGTAGCACAC
 361 371 381 391 401 411 421 431 441 XhoI 451
 (12253901-12253986) ←
 → (12254690-12254454)

461 GCACACGCCACGCCACACCCCTCTTACAGATGCCGTACACATGCCATAGGAACAATAACAACCCTTGATTTGTAAGAAAGCCAAATCTCTCATTTGCCCTTCTTAA
 471 481 491 501 511 521 531 541 551 561

571 GGAAAGAAAGAGATCTCACTTAGTTACAAAAACCATTTTCCAGTCCCGGAAATTTGGAACTGGTACAGCGGGCAAAAGCA GTTTACAGGGTTTGTGATCAACTTTATTT
 581 BglII 591 601 611 621 631 641 651 661 671

