

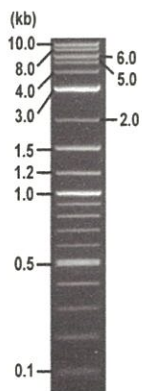


RIKEN DNA BANK

clone name : pKM2L-phGCG

- Clone ID : RDB _ 05490
- Lot : 05490 _ A6A7
- DNA Concentration : 25 nanogram/microliter
- Volume : 40 microliter
- Form : DNA solution in TE buffer
- Host : DH5 alpha
- Culture : LB medium
- Antibiotics : 25 microgram/ml kanamycin
- Purification : QIAGEN QIAprep Spin Miniprep kit
- Digestion by restriction enzyme

2-Log DNA Ladder
(NEB#N3200L),
125 ng/well



Electrophoresis : 101 nanogram DNA per lane ; 1% agarose gel , 1 x TAE Buffer

Restriction enzyme	Expected size of fragment
<u>BglII</u>	<u>5.9</u> kbp
<u>PstI</u>	<u>4.1, 1.8</u> kbp
_____	_____ kbp
_____	_____ kbp
_____	_____ kbp

● Confirmation of the insertion sequence

Sequence name	Primer name	Sequence name	Primer name
Sequence - A	M13_-40	Sequence - E	-
Sequence - B	phRLR2	Sequence - F	-
Sequence - C	pAxCALNL_F1	Sequence - G	-
Sequence - D	-	Sequence - H	-



APPROVED BY :

ACCAA CCCC TCT CATTTTACAAATAA GAGGCCAGAGACCAAAAGAGAAATGCCGTGACTTGACCAAGGTCCACACAGCTGGTCAATAACAGCAAAACTAAAAATCAA
67 676 685 694 703 712 721 730 739 748 757 766

ATTTATGCCCAACAC TACTTCTTATGCTGTCTTCCAGATTA TTTA CCA TTTTCTCTCTCTACAGTGACCAGAAATCA TTTCTGTCTAAATGT CACCA
775 784 793 802 811 820 829 838 847 856 865

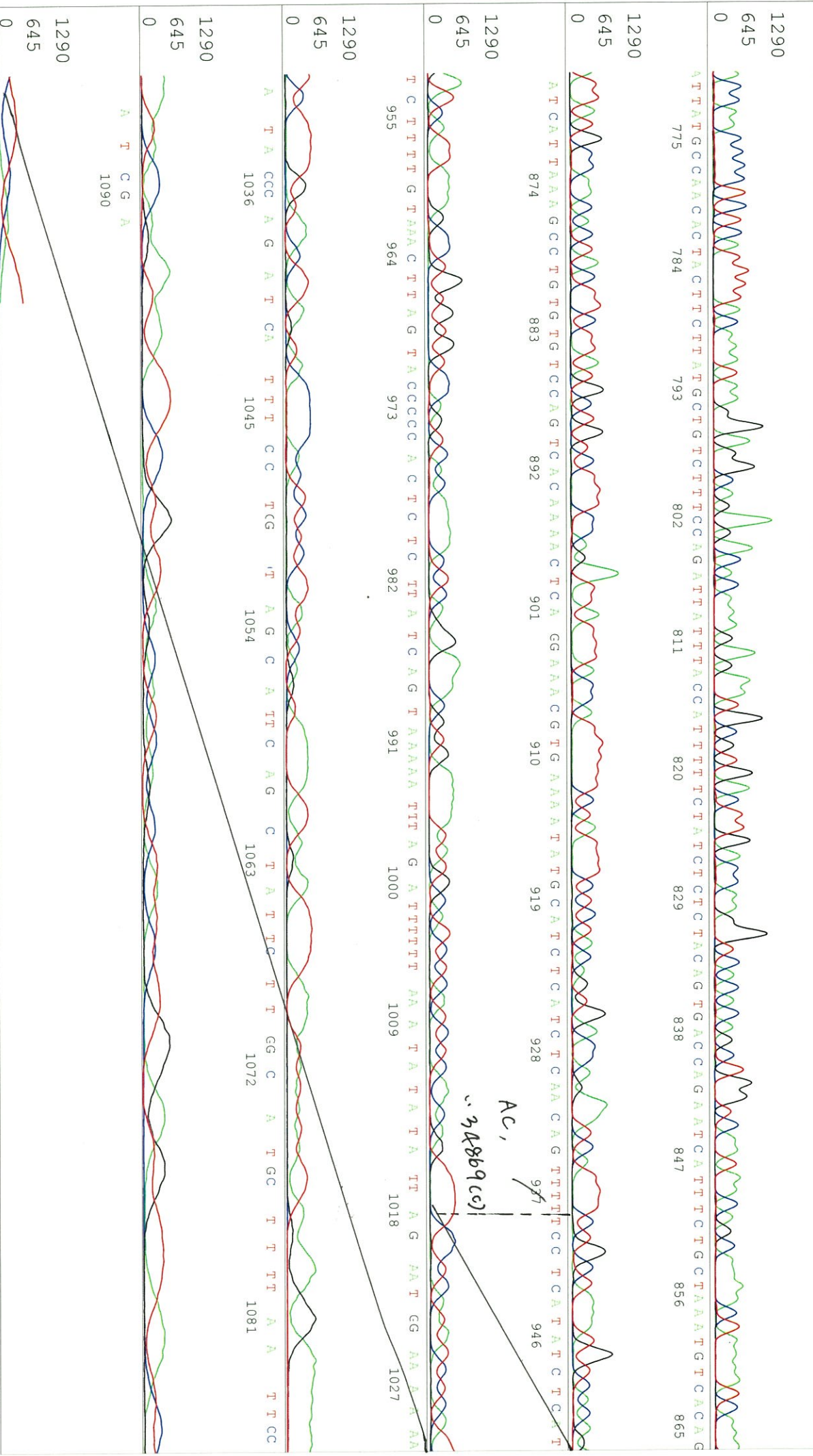
ATCATT TAAAGCC TGTGTGTC CAGTCA CAA A A A C T C A GGA A A C G T G A A A A T A T G C A T C T C A A C A G T T T T T C C T C A T A T C T C A T
874 883 892 901 910 919 928 937 946

TC TTTTGTAAAC TTAG TACCCCACTCTCTCA TTA TCAAG TAAAAA TTTAG A TTTT T T A A T A T A T T A G A A T G G A A A A A
955 964 973 982 991 1000 1009 1018 1027

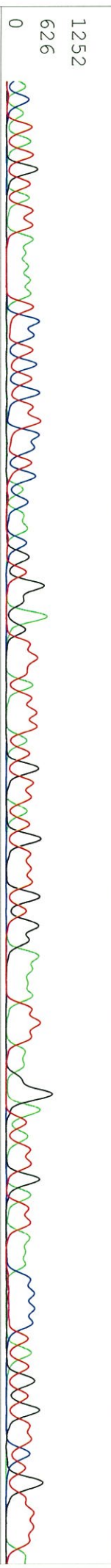
T A CCC A G A T CA TTTT C C TCG T A G C A TT C A G C T A T T C T T G G C A T G C T T T A A T T C C
1036 1045 1054 1063 1072 1081

A T C G A
1090

AC,
3,4869 (c)

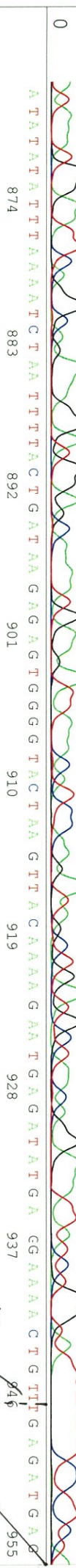


ACATATGTTATTTAAATAATCCCTCTCTCCCTCCACAACCGTGGAGTTTATTATTATGTATTGTTGTAAGAAATTTAAAGGATATTGATTAAACCCCTATGTTCTCTTTA
667 676 685 694 703 712 721 730 739 748 757 766



ECOR1

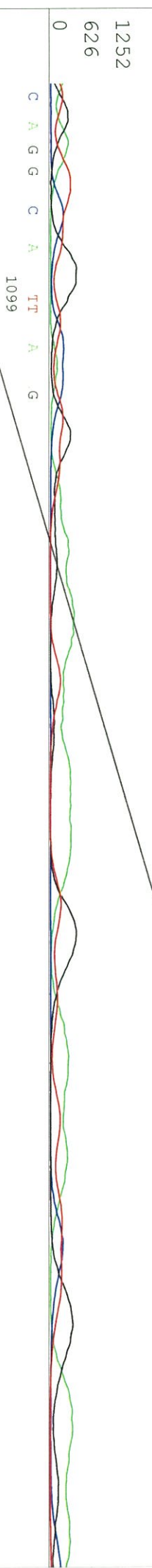
ATAAATGGAATTTCAGGCCAGAAAAGATGGAGCAAAAATGAAAGATTAAACATCCAAGATAGCTGATGCTAAACAGGAAATTAATCTCTGGTATTTTCTCTT
775 784 793 802 811 820 829 838 847 856 865



AC, 946
...348177

ATGCAATATTTTTCAACGTTTCCCCTGGAGTTTTGTGACTTGGACACACAAGGC TTTAAAATGATCTGTGACATA TTTAGCCAGAA
964 973 982 991 1000 1009 1018 1027

TTGAA TCC TGG TTC A C T G T A G A G C A T A GC A A C A A T G C T C A A T A A G T C T G G C A A A A G G A C
1036 1045 1054 1063 1072 1081 1090



C A G G C A A TT A G
1099

