

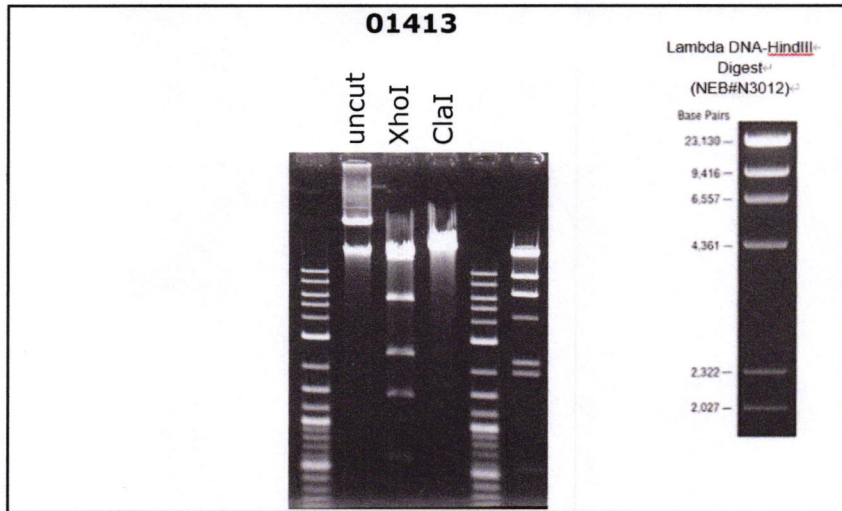
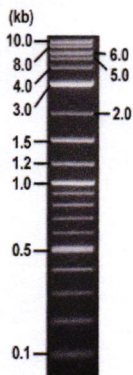


RIKEN DNA BANK

clone name : **pAxCaML12p35**

- Clone ID : RDB_01413
- Lot : 01413_B2L1
- DNA Concentration : 25 nanogram/microliter
- Volume : 40 microliter
- Form : DNA solution in TE buffer
- Host : DH5 alpha
- Culture : LB medium
- Antibiotics : 100 microgram/ml Ampicillin
- Purification : QIAGEN QIAprep Spin Miniprep kit
- Digestion by restriction enzyme

1 kb Plus DNA Ladder
(NEB#N3200L),
250 ng/well



Electrophoresis : 200 nanogram DNA per lane ; 1% agarose gel , 1 x TAE Buffer

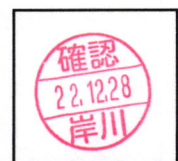
Restriction enzyme	Expected size of fragment
XhoI	21.0, 14.5, 5.6, 2.5, 1.4, 0.6 kbp
ClaI	45.6 kbp
	kbp
	kbp

● Confirmation of the insertion sequence

Please be sure to check our sequence analysis results before your request.

Sequence name	Primer ID	Primer name	Confirmed feature
Sequence - A	Pr0164	pAxCa_F1	insert 5'
Sequence - B	Pr0165	pAxCa_R1	insert 3'
Sequence - C	Pr0008	Amp_R	AmpR pro, ITR
Sequence - D	-	-	-
Sequence - E	-	-	-
Sequence - F	-	-	-
Sequence - G	-	-	-
Sequence - H	-	-	-

APPROVED BY :



S/N G:286 A:202 T:158 C:199

primer name A : paxCA_F1

KB_bcp KB_3500_POP7_BDTV3.mob

Dec 16, 2022 09:53AM, JST

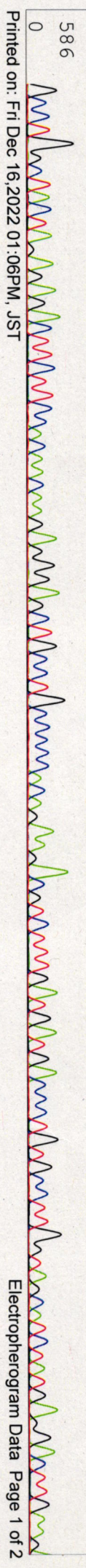
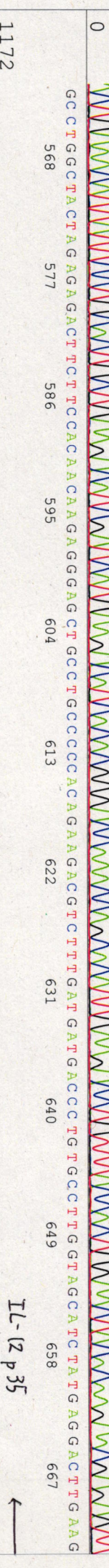
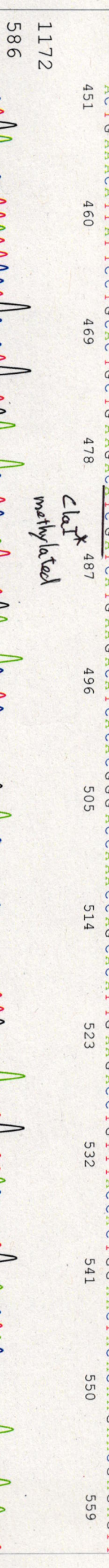
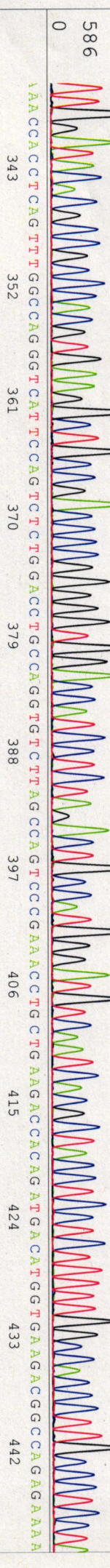
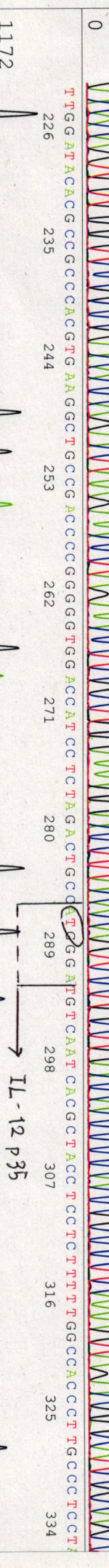
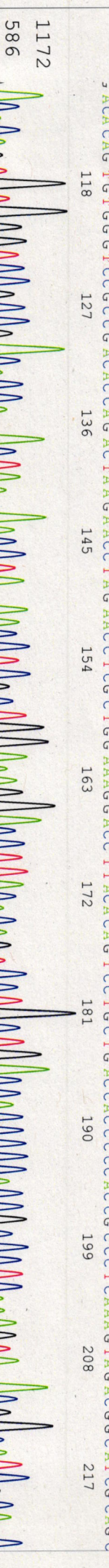
KB 1.4.1.8 Cap:1

5'GGCTTCTGGCGGTGACCGGC3'

Pts 1607 to 13475 Pk1 Loc:1584

Dec 16, 2022 10:20AM, JST

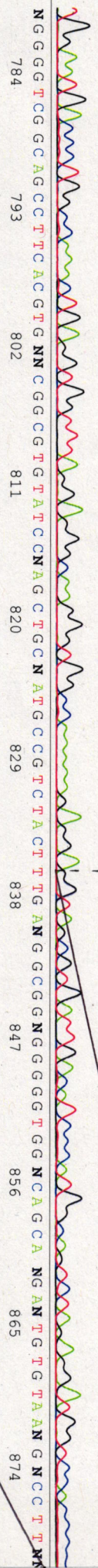
1 NNNNNNN NN NN NN NNNNTGCCCTCTCTCTTTTTCCTCCCTCCCTGGCAACCTGGCTGTTATTGTGCTGTCTCATCATTTTGGCAAGCTCACCTTACCGAATCGGC



Printed on: Fri Dec 16, 2022 01:06PM, JST

TGGAATGACCCCTGGCCCAAACCTGAGGTGGTTTAGGAGGCAAGGCTGCCCAAAGAGAGANGTAGCCGTGATTGACATCCCA TGGCCAGTCTTAGAGGATGCTCCACCC

IL-12 p35



1078
539

NGGGTCCGGCAGCCCTTCACTGTGNNCGGGCTGTATCCNAGCTGCNATGCCCTCTACTTTGANGGGGGTGGNCCAGCANGTGTTAANGNCC TTN
784 793 802 811 820 829 838 847 856 865 874

1078
539

CAGCGAGGTNTANGTTCTTANNCTGGNGTCCGGNAGNCCNCACTGNGTCCGNANTCNGNNGN NNNCTTTGNNAAAANGANGANN
883 892 901 910 919 928 937 946 955 964

1078
539

NN
973 982 991 1000 1009 1018 1027 1036 1045

1078
539

NN
1054 1063 1072 1081 1090 1099

1078
539

NN
1108 1117

