

RIKEN Clone ID : RBdS177P23

Vector : pGCAP10

Gene	EML4	
RefSeq_mRNA	NM_019063.5	5546 bp

● Plasmid DNA purification

Date : 22.03.30

Culture : LB (100 ug/ml Ampicillin) 5 ml -> at 37 deg C O/N

Date : 22.03.31

Purification : QIAGEN Miniprep kit -> dH₂O 100 ul

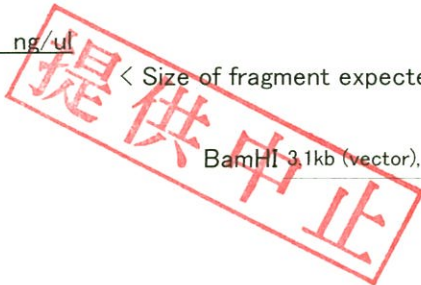
● Digestion by restriction enzyme/Concentration calibration

Date : 22.03.31

DNA concentration (O.D.): 380 ng/ul

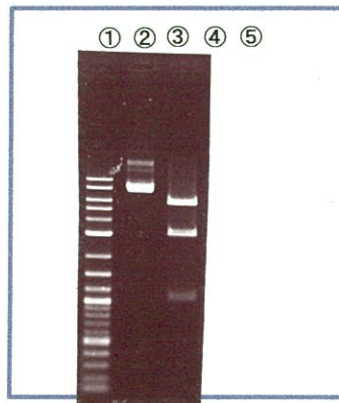
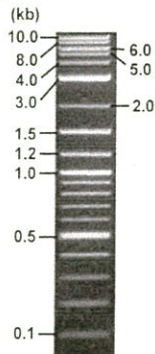
< Size of fragment expected from this clone >

DNA	0.25 ul		
Enzyme (BamHI)	1 ul	BamHI 3.1kb (vector),	5.7 kb (unsure)
Buffer H	1 ul		
dH ₂ O	7.75 ul		
Total	10 ul		



Electrophoresis : 1% agarose gel, 1x TAE Buffer

Marker : 2-Log DNA Ladder (NEB#N3200L)



①:Marker
②:uncut
③:BamHI

● Confirmation of the insertion sequence

Date : _____

Primer A	pGCAP-F
Primer B	pGCAP-R
Primer C	Poly(A) region
List of Sequencing Primers	http://dna.brc.riken.jp/en/NRCDhum2e.n.html

● Adjust plasmid DNA solution to 25 ng/ul

Date : _____

DNA (380 ng/ul)	ul
10x TE	ul
dH ₂ O	ul
Total	ul

● Shipping

Conc. : 25 ng/μl, Volume : 40 μl

Conc. : ___ ng/μl, Volume : ___ μl

APPROVED BY :

