

RIKEN Clone ID : RBdS154L12

Vector : pGCAP10

Lot# : 6608_B1Hn

Gene	SIP1	
RefSeq_mRNA	M_001009182	1275 bp

● Plasmid DNA purification

Date : 21.08.23

Culture : LB (100 ug/ml Ampicillin) 5 ml -> at 37 deg C O/N

Date : 21.08.24

Purification : QIAGEN Miniprep kit -> dH₂O 100 ul

● Digestion by restriction enzyme/Concentration calibration

Date : 21.08.24

DNA concentration (O.D.): 305 ng/ul

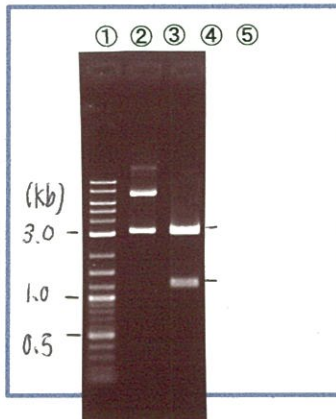
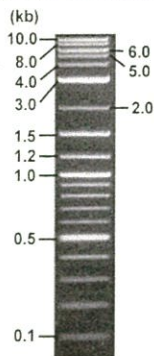
< Size of fragment expected from this clone >

DNA	0.3 ul
Enzyme (BamHI)	1 ul
Buffer H	1 ul
dH ₂ O	7.7 ul
Total	10 ul

BamHI 3.1kb (vector), 1.5 kb (unsure)

Electrophoresis : 1% agarose gel, 1x TAE Buffer

Marker : 2-Log DNA Ladder (NEB#N3200L)



①:Marker
②:uncut
③:BamHI

● Confirmation of the insertion sequence

Date : 21.11.15

Primer A	pGCAP-F
Primer B	pGCAP-R
Primer C	Poly(A) region
List of Sequencing Primers	http://dna.brc.riken.jp/en/NRCDhum2en.html

● Adjust plasmid DNA solution to 25 ng/ul

Date : 21.12.2

DNA (305 ng/ul)	82.0 ul
10x TE	100.0 ul
dH ₂ O	818.4 ul
Total	1000.4 ul

● Shipping

Conc. : 25 ng/μl, Volume : 40 μl

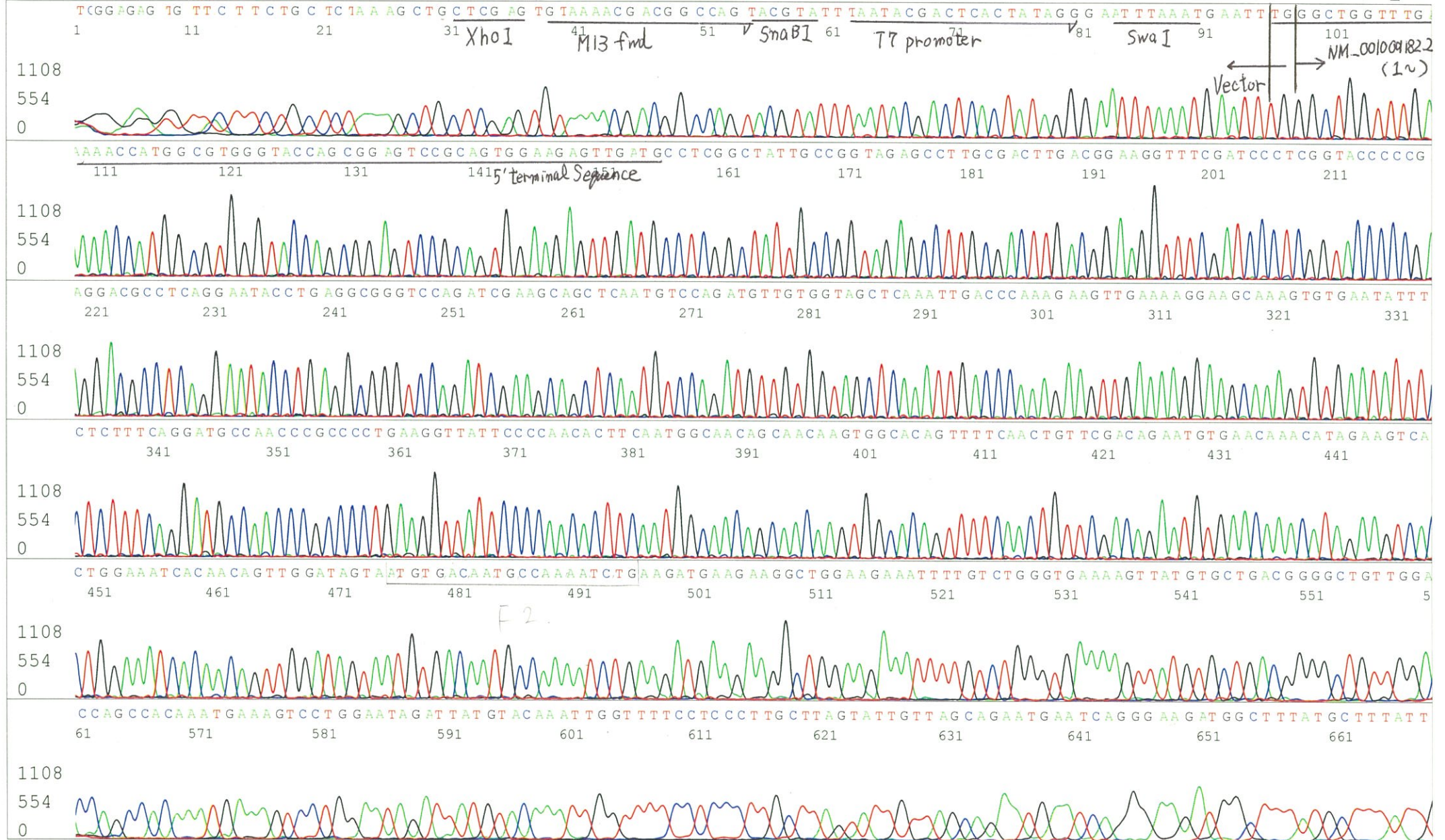
Conc. : ___ ng/μl, Volume : ___ μl



APPROVED BY :

S/N G:212 A:235 T:139 C:158
KB.bcp
KB 1.4.1.8 Cap:5

Primer A : pGCAP-F
5' CTCAGTGGATGTTGCCTTTAC 3'



S/N G:55 A:84 T:82 C:66

Primer B : pGCAP-R

6608_RBdS154L12_B1Hn_pGCAP_R

KB_3500_POP7_BDTv3.mob

Pts 1882 to 8800 Pk1 Loc:1850

Version 6.0 HiSQV Bases: 113

Aug 25,2021 09:52AM, JST

Aug 25,2021 10:07AM, JST

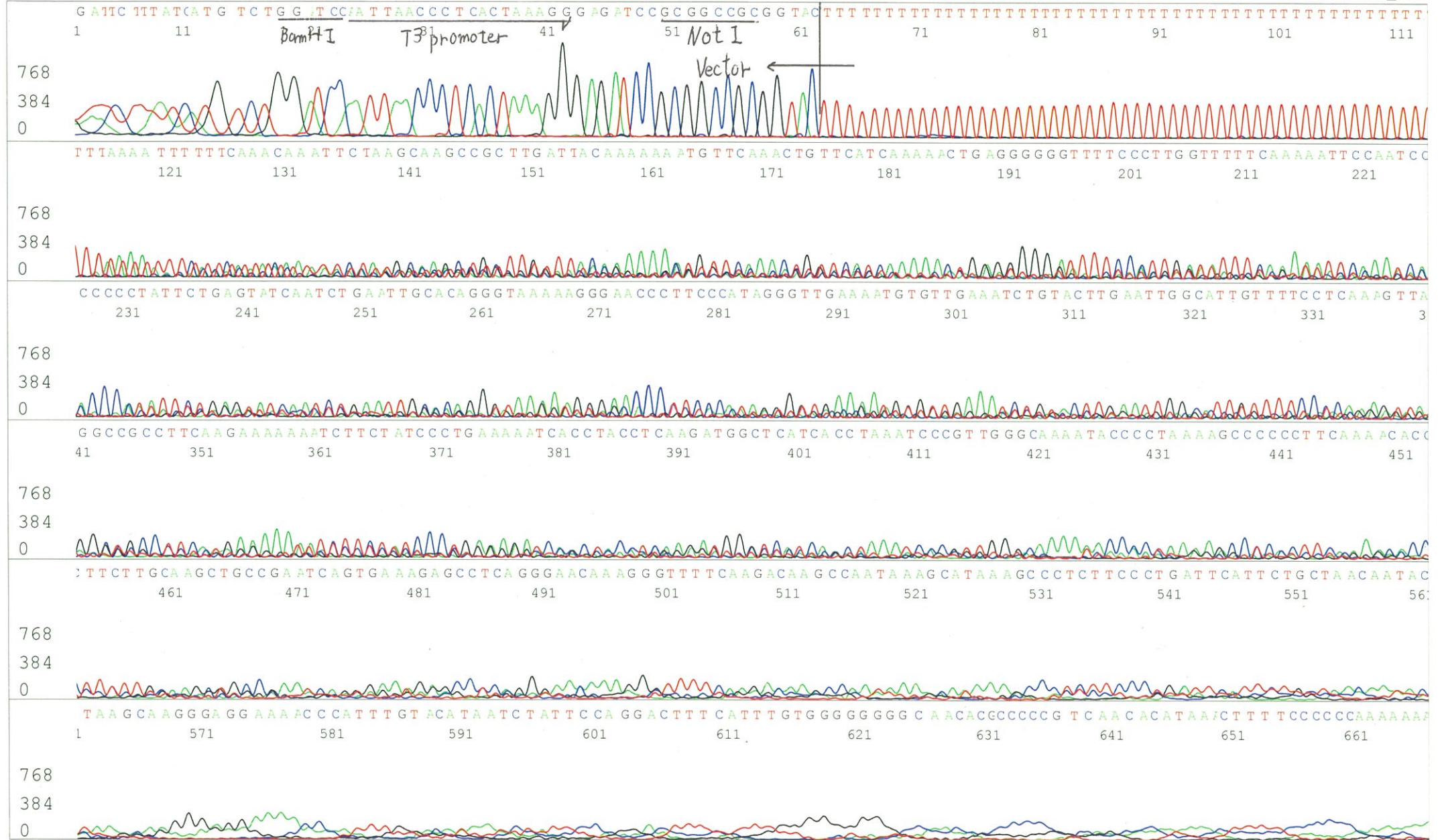
Spacing:10.73 Pts/Panel1350

Plate Name: 20210825_GNP

KB.bcp

KB 1.4.1.8 Cap:8

5' GCATTCTAGTTGTGGTTTGTCC 3'



S/N G:17 A:19 T:13 C:14

6608_RBdS154L12_B1Hn_GNPmixture

Aug 25,2021 09:52AM, JST

KB.bcp

Primer C : Poly(A) region primer #0

KB_3500_POP7_BDTV3.mob

Aug 25,2021 10:07AM, JST

KB 1.4.1.8 Cap:11

5' TTTTTTTTTTTTTTTTTTTTTTVNN 3'

Pts 1864 to 8707 Pk1 Loc:1832

Spacing:10.43 Pts/Panel1350

Version 6.0 HiSQV Bases: 572

Plate Name: 20210825_GNP

