

**RIKEN Clone ID : RBdS105J10**

Vector : pGCAP10

Gene	OSBP2	
RefSeq_mRNA	NM_030758.3	4349 bp
	CDS	2751 bp
5' position		199

● Plasmid DNA purification

Date : 160706

Culture : LB (100 ug/ml Ampicillin) 5 ml → at 37 deg C O/N

Date : 160708

Purification : QIAGEN Miniprep kit → dH<sub>2</sub>O 100 ul

● Digestion by restriction enzyme/Concentration calibration

Date : 160708

DNA concentration (O.D.): 113 ng/ul

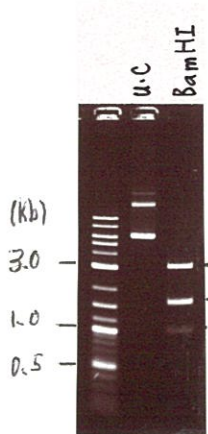
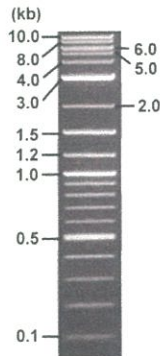
< Size of fragment expected from this clone >

DNA	<u>0.8</u>	ul
Enzyme (BamHI)		1 ul
Buffer H		1 ul
dH <sub>2</sub> O	<u>7.2</u>	ul
Total		10 ul

BamHI 3.1kb (vector), 1.7, 1.6, 1.0 kb (unsure)

Electrophoresis : 1% agarose gel, 1x TAE Buffer

Marker : 2-Log DNA Ladder (NEB#N3200L)



● Confirmation of the insertion sequence

Date : 160719

Primer A	pGCAP-F
Primer B	pGCAP-R
Primer C	Poly(A) region
List of Sequencing Primers	<a href="http://dna.brc.riken.jp/en/NRCDhum2en.html">http://dna.brc.riken.jp/en/NRCDhum2en.html</a>

● Adjust plasmid DNA solution to 25 ng/ul

Date : 160719

DNA ( <u>113</u> ng/ul)	<u>84.0</u>	ul
10x TE	<u>38.0</u>	ul
dH <sub>2</sub> O	<u>257.7</u>	ul
Total	<u>379.7</u>	ul

● Shipping



Conc. : 25 ng/μl, Volume : 40 μl



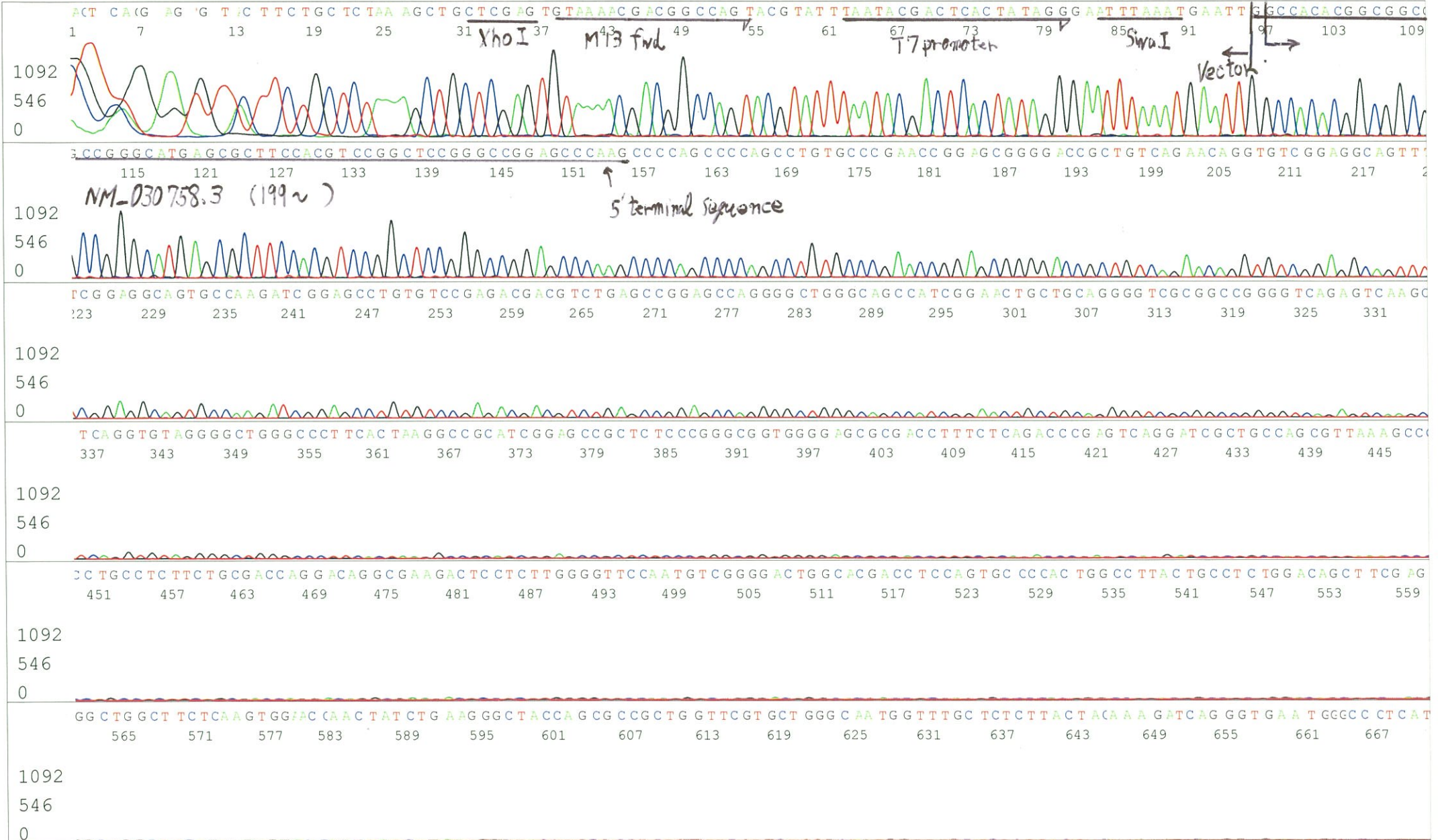
~~Conc. : \_\_\_ ng/μl, Volume : \_\_\_ μl~~

APPROVED BY :



S/N G:137 A:82 T:77 C:92  
KB.bcp  
KB 1.4.1.8 Cap:7

Primer A : pGCAP-F  
5' CTCAGTGGATGTTGCCTTTAC 3'



S/N G:137 A:82 T:77 C:92  
KB.bcp  
KB 1.4.1.8 Cap:7





S/N G:245 A:161 T:237 C:167

KB.bcp

Primer B : pGCAP-R

6608\_RBdS105J10\_A6G6\_pGCAP\_R

KB\_3500\_POP7\_BDTv3.mob

Jul 15,2016 10:05AM, JST

Jul 15,2016 10:31AM, JST

KB 1.4.1.8 Cap:10

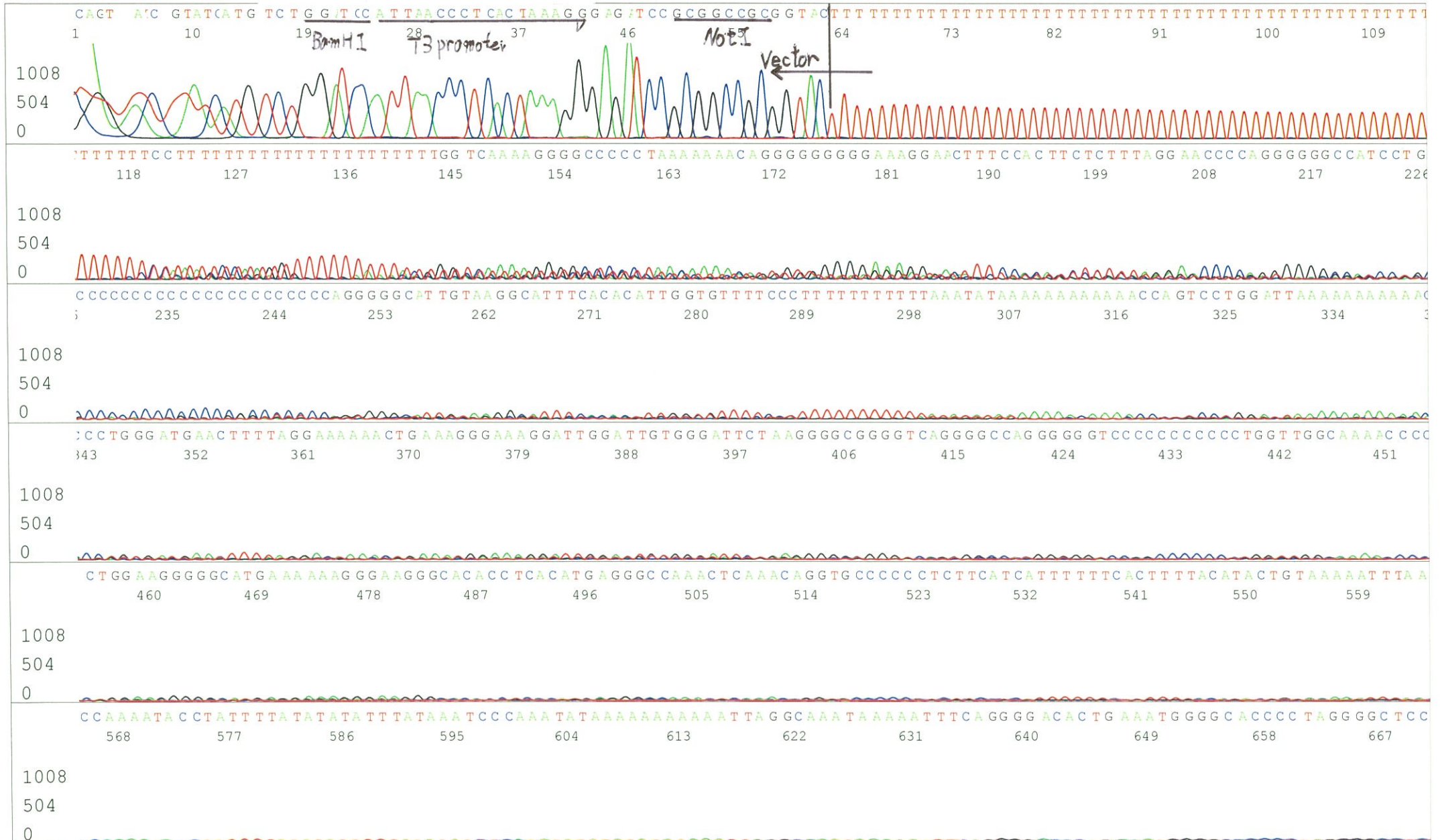
5' GCATTCTAGTTGTGGTTTTGTCC 3'

Pts 1504 to 12466 Pk1 Loc:1481

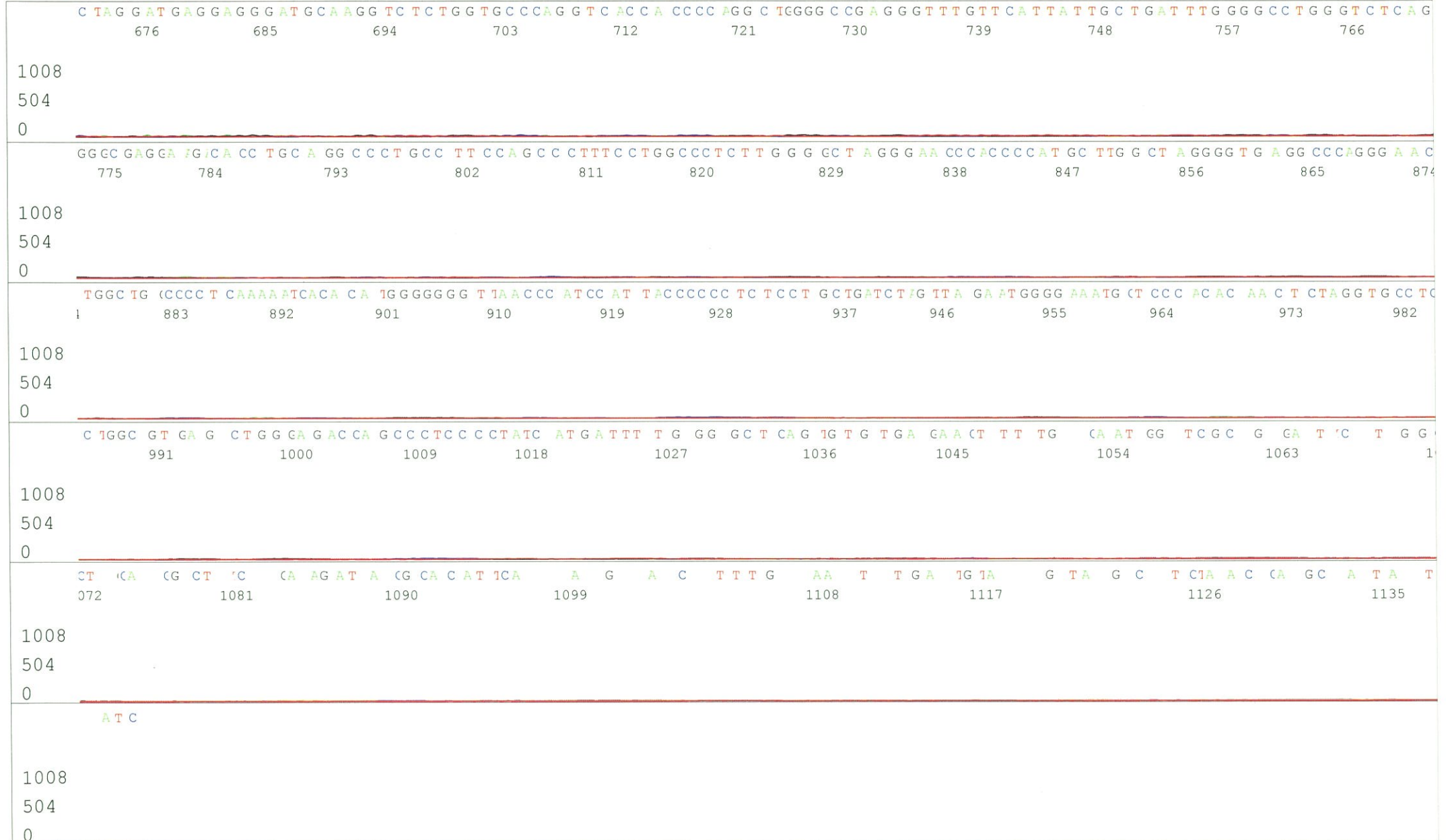
Version 6.0 HiSQV Bases: 314

Spacing:13.25 Pts/Panel1350

Plate Name: 20160715\_GNP



S/N G:245 A:161 T:237 C:167  
KB.bcp  
KB 1.4.1.8 Cap:10





S/N G:316 A:325 T:259 C:348

Primer C : Poly(A) region primer #0

6608\_RbS105J10\_A6G6\_GNPmixture

Jul 19,2016 02:03PM, JST

KB.bcp

KB\_3500\_POP7\_BDTv3.mob

Jul 19,2016 02:29PM, JST

KB 1.4.1.8 Cap:19

5' TTTTTTTTTTTTTTTTTTTTTTNNN 3'

Pts 1431 to 12646 Pk1 Loc:1408

Spacing:11.19 Pts/Panel1350

Version 6.0 HiSQV Bases: 933

Plate Name: 20160719\_mix

