

RIKEN Clone ID : RBdS040K24

Vector : pGCAP10

Gene	SF3B2	
RefSeq_mRNA	NM_006842.3	3272 bp

● Plasmid DNA purification

Date : 22.03.28

Culture : LB (100 ug/ml Ampicillin) 5 ml -> at 37 deg C O/N

Date : 22.03.30

Purification : QIAGEN Miniprep kit -> dH₂O 100 ul

● Digestion by restriction enzyme/Concentration calibration

Date : 22.03.30

DNA concentration (O.D.): 318 ng/ul

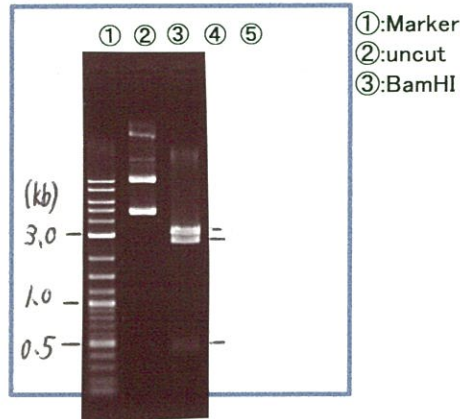
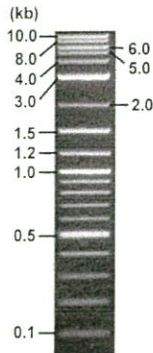
< Size of fragment expected from this clone >

DNA	<u>0.3</u> ul
Enzyme (BamHI)	1 ul
Buffer H	1 ul
dH ₂ O	<u>7.7</u> ul
Total	10 ul

BamHI 3.1kb (vector), 2.7, 0.8 kb (unsure)

Electrophoresis : 1% agarose gel, 1x TAE Buffer

Marker : 2-Log DNA Ladder (NEB#N3200L)



● Confirmation of the insertion sequence

Date : 22.05.16

Primer A	pGCAP-F
Primer B	pGCAP-R
Primer C	Poly(A) region
List of Sequencing Primers	http://dna.brc.riken.jp/en/NRCDhum2en.html

● Adjust plasmid DNA solution to 25 ng/ul

Date : 22.05.26

DNA (<u>318</u> ng/ul)	<u>76.0</u> ul
10x TE	<u>96.6</u> ul
dH ₂ O	<u>194.1</u> ul
Total	<u>966.7</u> ul

● Shipping



Conc. : 25 ng/μl, Volume : 40 μl



Conc. : ng/μl, Volume : μl



APPROVED BY :

S/N G:354 A:371 T:251 C:513
KB.bcp
KB 1.4.1.8 Cap:12

Primer A : pGCAP-F

6608_RBdS040K24_B2Cs_pGCAP_F

KB_3500_POP7_BDTv3.mob

Gray line indicates quality value

Mar 31,2022 10:20AM, JST

Mar 31,2022 10:37AM, JST

5' CTCAGTGGATGTTGCCTTTAC 3'

Pts 1717 to 8706 Pk1 Loc:1685

(QV) < 40.

Spacing:10.67 Pts/Panel1350

Version 6.0 HiSQV Bases: 662

Plate Name: 20220331_MGE

