

**RIKEN Clone ID : RBdS040J05**

Vector : pGCAP10

Gene	RTN4	
RefSeq_mRNA	NM_020532.4	4871 bp
	CDS	3579 bp
		299..3877
	5' position	247

● Plasmid DNA purification

Date : 140717

Culture : LB (100 ug/ml Ampicillin) 5 ml -> at 37 deg C O/N

Date : 140718

Purification : QIAGEN Miniprep kit -> dH<sub>2</sub>O 100 ul

● Digestion by restriction enzyme/Concentration calibration

Date : 140718

DNA concentration (O.D.): 182 ng/ul

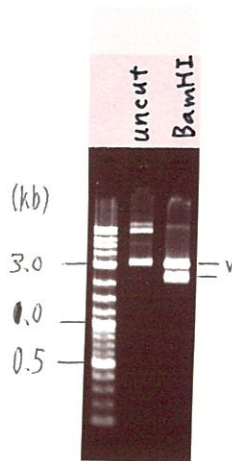
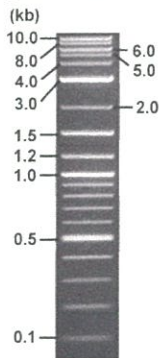
<Size of fragment expected from RBdS040J05 >

DNA	<u>0.3</u> ul
Enzyme (BamHI)	1 ul
Buffer H	1 ul
dH <sub>2</sub> O	<u>7.7</u> ul
<b>Total</b>	<b>10 ul</b>

BamHI 3183(vector), 4826 bp (unsure)

Electrophoresis : 1% agarose gel, 1x TAE Buffer

Marker : 2-Log DNA Ladder (NEB#N3200L)



● Confirmation of the insertion sequence

Date : 140724

Primer A	pGCAP-F
Primer B	pGCAP-R
Primer C	Poly(A) region
List of Sequencing Primers	<a href="http://dna.brc.riken.jp/en/NRCDhum2en.html">http://dna.brc.riken.jp/en/NRCDhum2en.html</a>

● Adjust plasmid DNA solution to 25 ng/ul

Date : 140813

DNA ( <u>182</u> ng/ul)	<u>82.0</u> ul
10x TE	<u>59.7</u> ul
dH <sub>2</sub> O	<u>455.3</u> ul
<b>Total</b>	<b>597.0 ul</b>

● Shipping

Conc. : 25 ng/μl, Volume : 40 μl

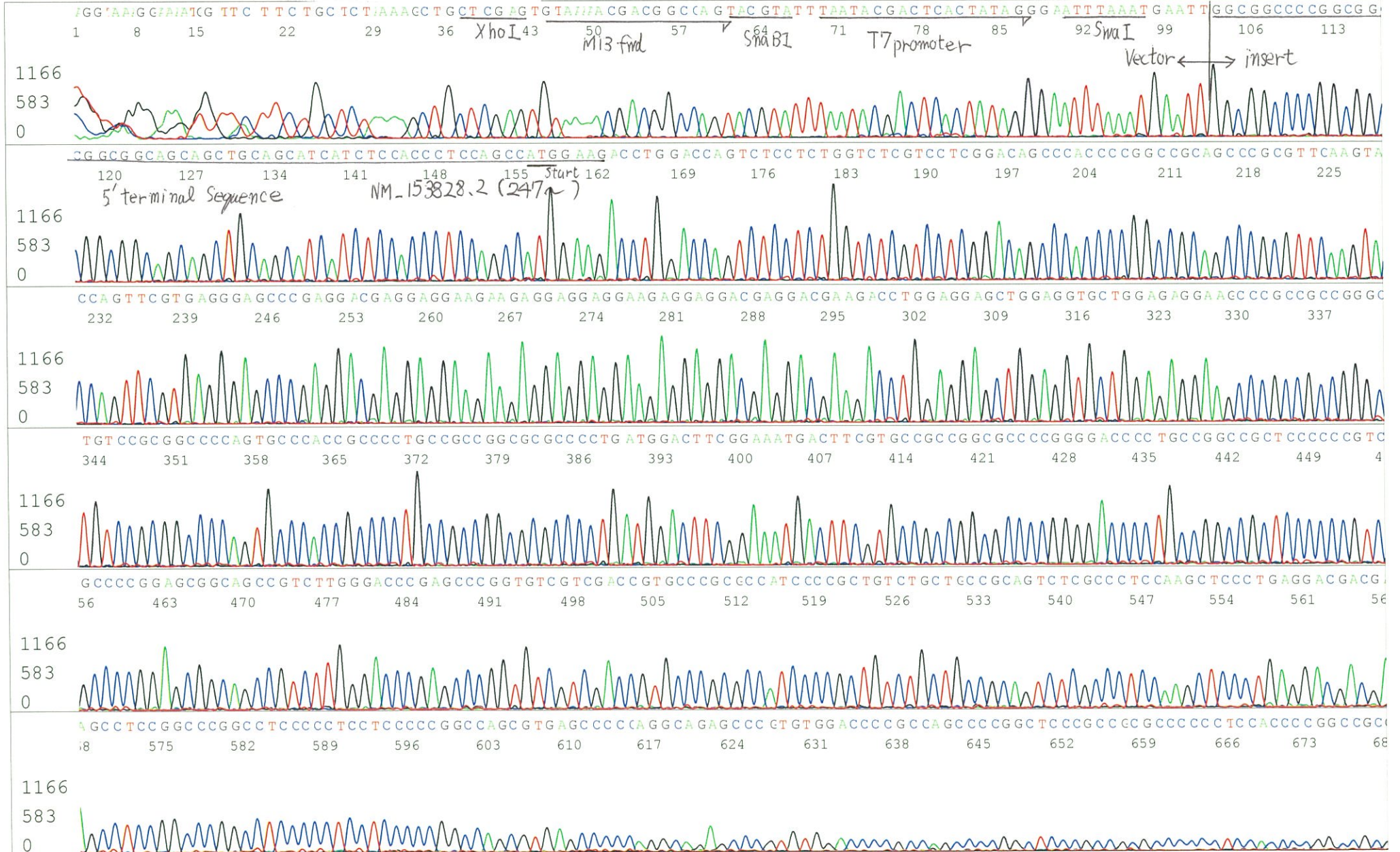
~~Conc. : ng/μl, Volume : μl~~

APPROVED BY :

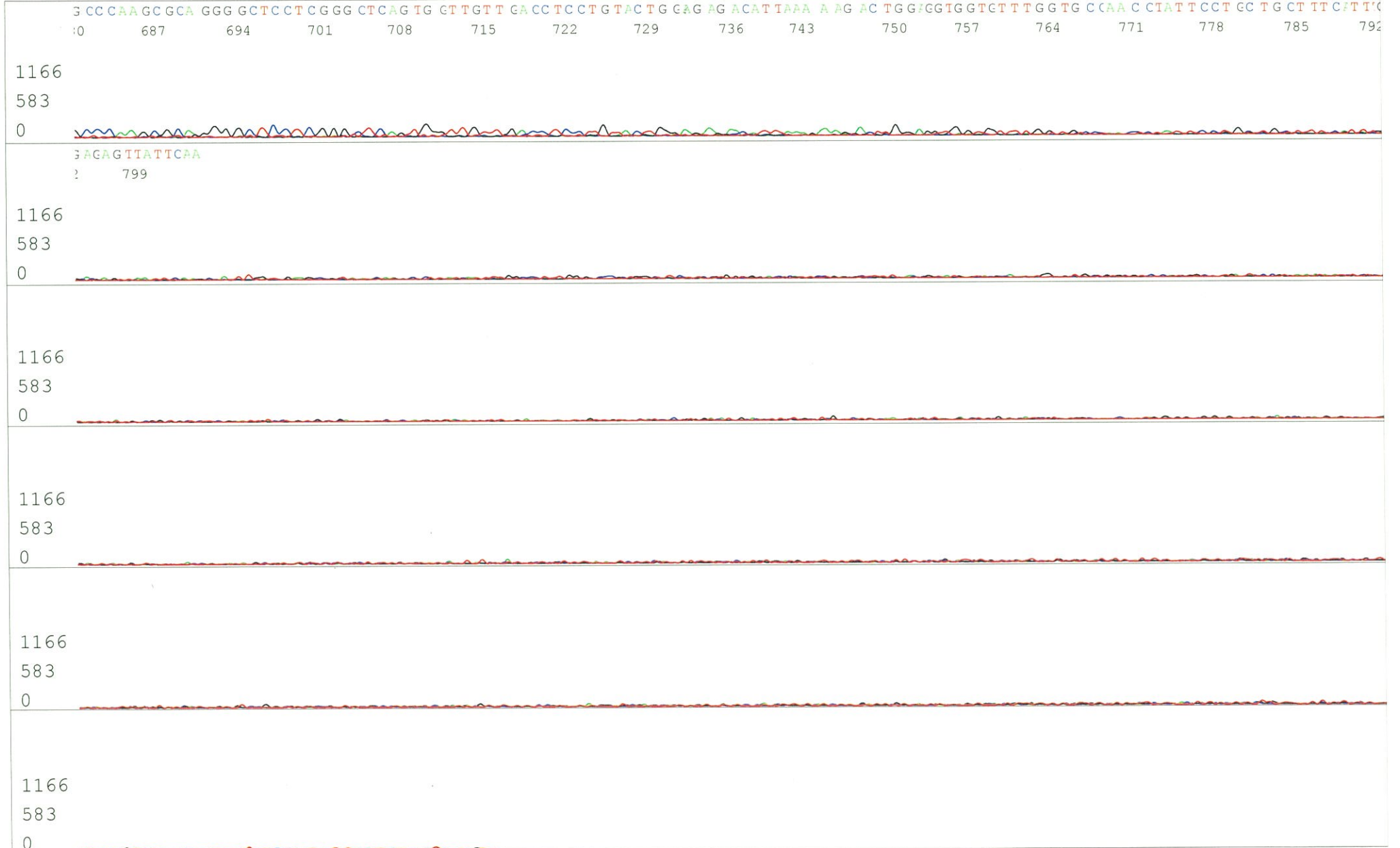


S/N G:22 A:19 T:13 C:26  
KB.bcp  
KB 1.4.1.8 Cap:12

Primer A : pGCAP-F  
5' CTCAGTGGATGTTGCCTTTAC 3'

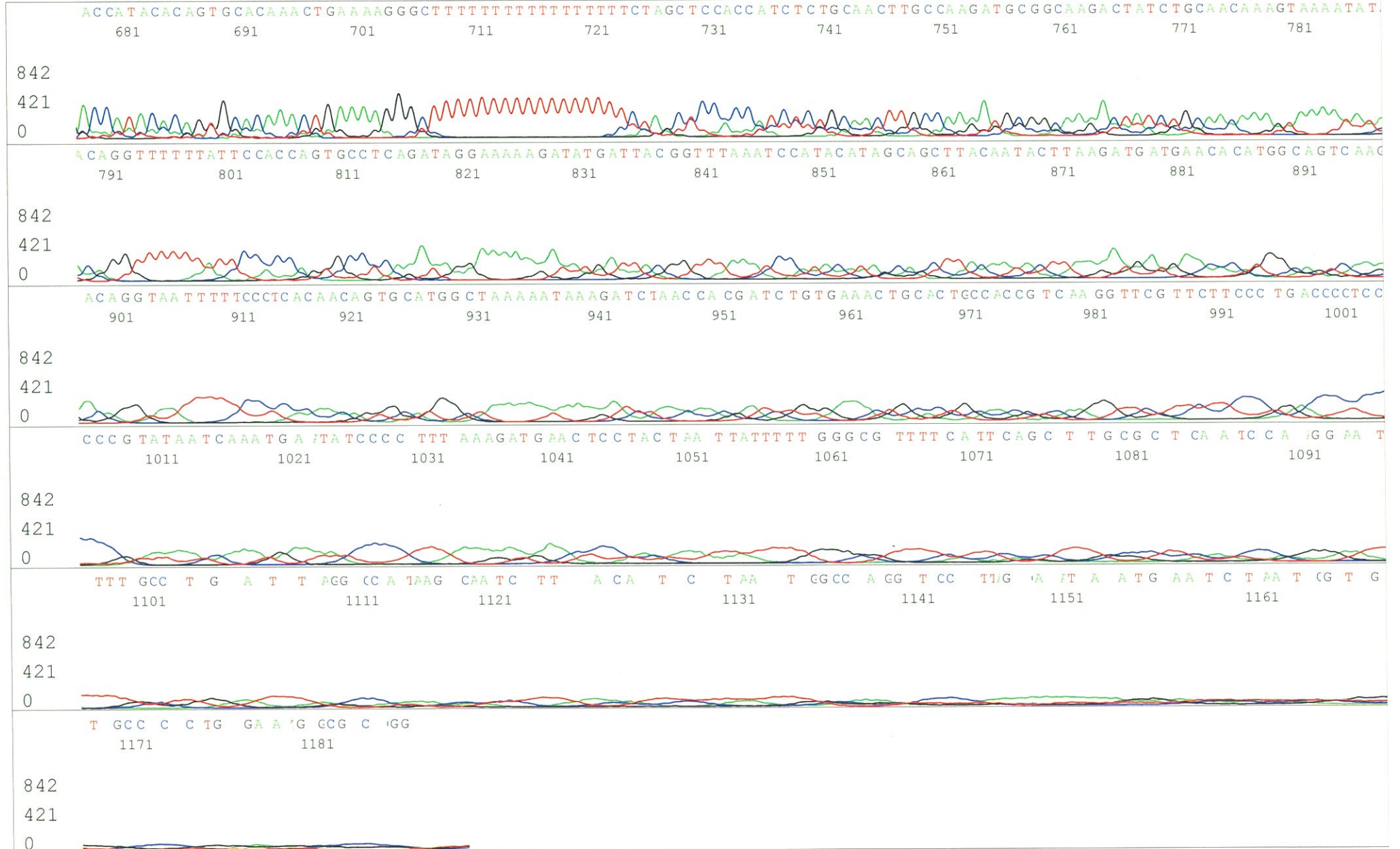


S/N G:22 A:19 T:13 C:26  
KB.bcp  
KB 1.4.1.8 Cap:12





S/N G:165 A:231 T:268 C:190  
KB.bcp  
KB 1.4.1.8 Cap:15

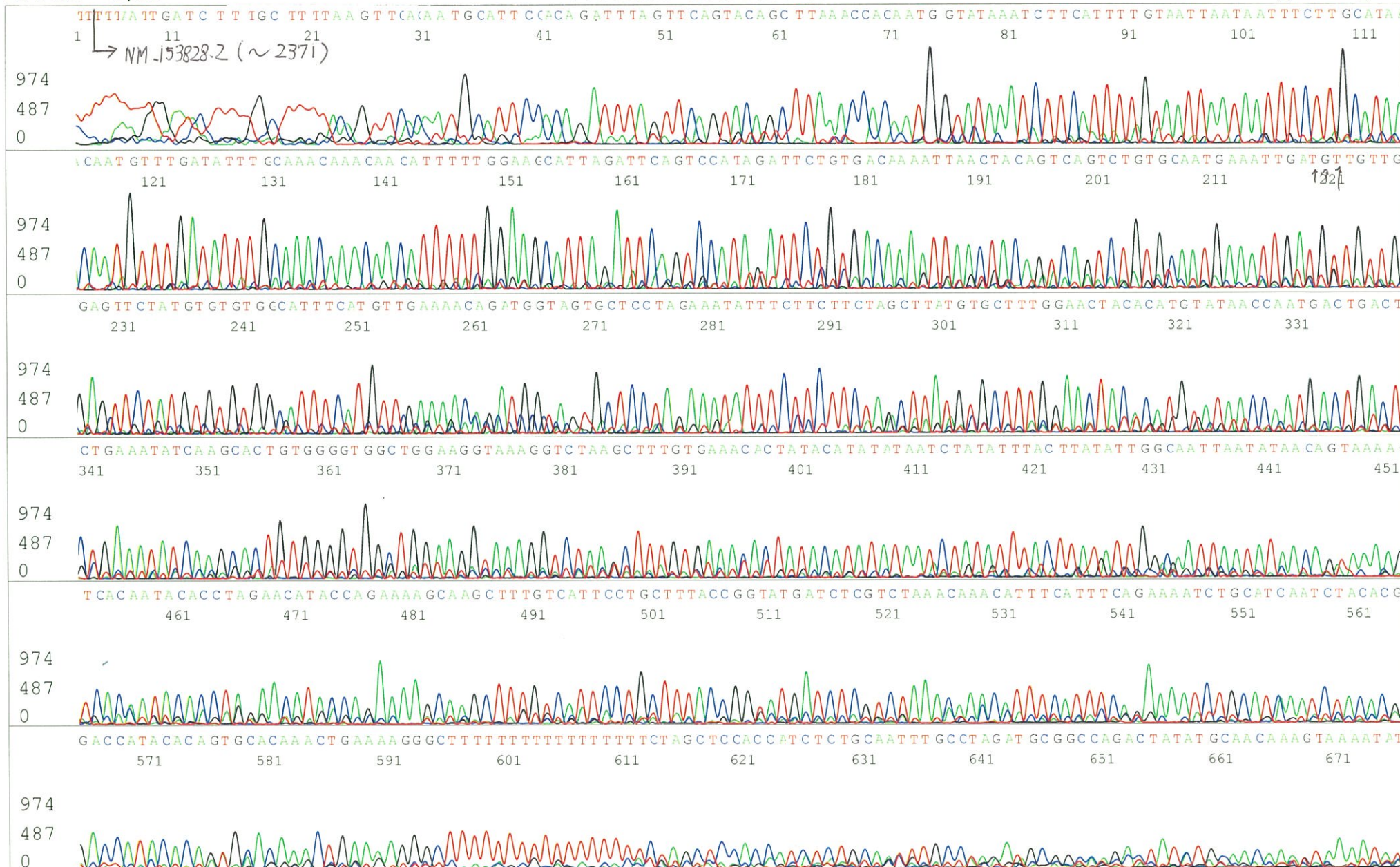


S/N G:20 A:21 T:15 C:14  
KB.bcp  
KB 1.4.1.8 Cap:18

Primer C : Poly(A) region primer #0  
5' TTTTTTTTTTTTTTTTTTTTTTNNN 3'

6608\_RBdS040J05\_A4Gh\_GNPmixture  
KB\_3500\_POP7\_BDTv3.mob  
Pts 1414 to 13545 Pk1 Loc:1391  
Version 5.4 HiSQV Bases: 780

Jul 24,2014 09:31AM, JST  
Jul 24,2014 10:04AM, JST  
Spacing:12.27 Pts/Panel1350  
Plate Name: 20140724\_DNAbank\_GNP



S/N G:20 A:21 T:15 C:14  
KB.bcp  
KB 1.4.1.8 Cap:18

