

RIKEN Clone ID : RBdS022D05

Vector : pGCAP10

Gene	SF3B2	
RefSeq_mRNA	NM_006842.3	3272 bp

● Plasmid DNA purification

Date : 22.03.28

Culture : LB (100 ug/ml Ampicillin) 5 ml -> at 37 deg C O/N

Date : 22.03.30

Purification : QIAGEN Miniprep kit -> dH₂O 100 ul

● Digestion by restriction enzyme/Concentration calibration

Date : 22.03.30

DNA concentration (O.D.): 365 ng/ul

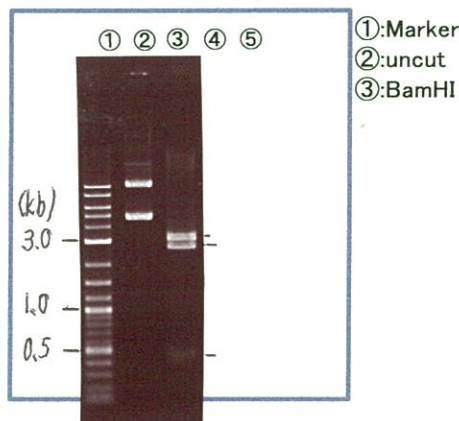
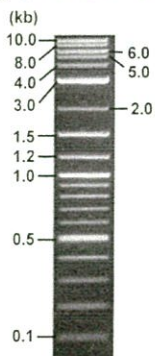
< Size of fragment expected from this clone >

DNA	0.25 ul
Enzyme (BamHI)	1 ul
Buffer H	1 ul
dH ₂ O	7.75 ul
Total	10 ul

BamHI 3.1kb (vector), 2.7, 0.8 kb (unsure)

Erectrophoresis : 1% agarose gel, 1x TAE Buffer

Marker : 2-Log DNA Ladder (NEB#N3200L)



● Confirmation of the insertion sequence

Date : 22.05.16

● Adjust plasmid DNA solution to 25 ng/ul

Date : 22.05.26

Primer A	pGCAP-F
Primer B	pGCAP-R
Primer C	Poly(A) region
List of Sequencing Primers	http://dna.brc.riken.jp/en/NRCDhum2en.html

DNA (<u>365</u> ng/ul)	<u>76.0</u> ul
10x TE	<u>110.9</u> ul
dH ₂ O	<u>422.7</u> ul
Total	<u>1109.6</u> ul

● Shipping

Conc. : 25 ng/μl, Volume : 40 μl

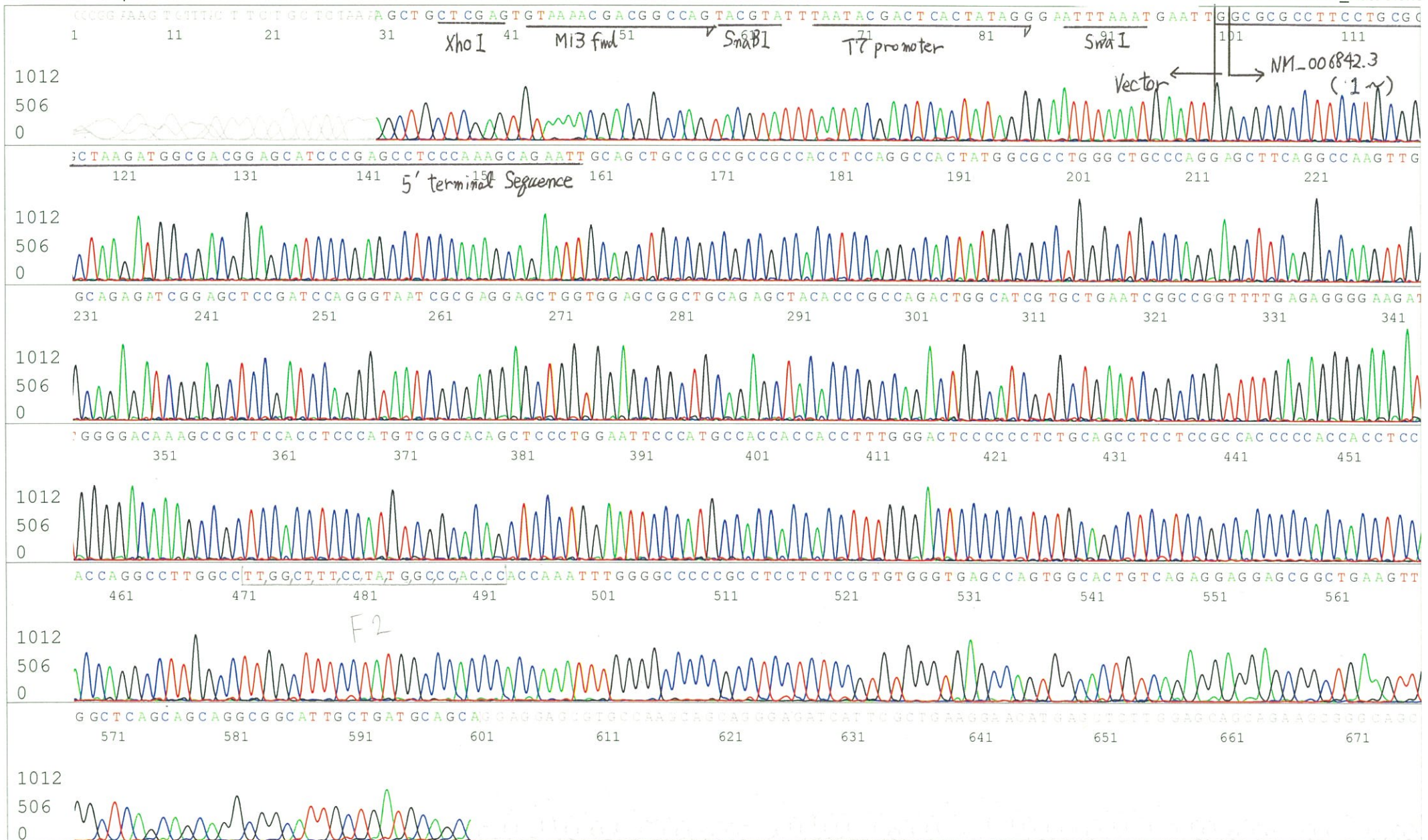
Conc. : ng/μl, Volume : μl



APPROVED BY :

S/N G:137 A:137 T:84 C:174 Primer A: pGCAP-F
KB.bcp
KB 1.4.1.8 Cap:4
5' CTCAGTGGATGTTGCCTTTAC 3'

Gray line indicates quality value
(QV) < 40.



S/N G:15 A:17 T:20 C:16

Primer B : pGCAP-R

6608_RBdS022D05_B2Cs_pGCAP_R

KB_3500_POP7_BDTv3.mob

Gray line indicates quality value

Mar 31,2022 09:42AM, JST

KB.bcp

Pts 1713 to 8702 Pk1 Loc:1681

Mar 31,2022 09:59AM, JST

KB 1.4.1.8 Cap:5

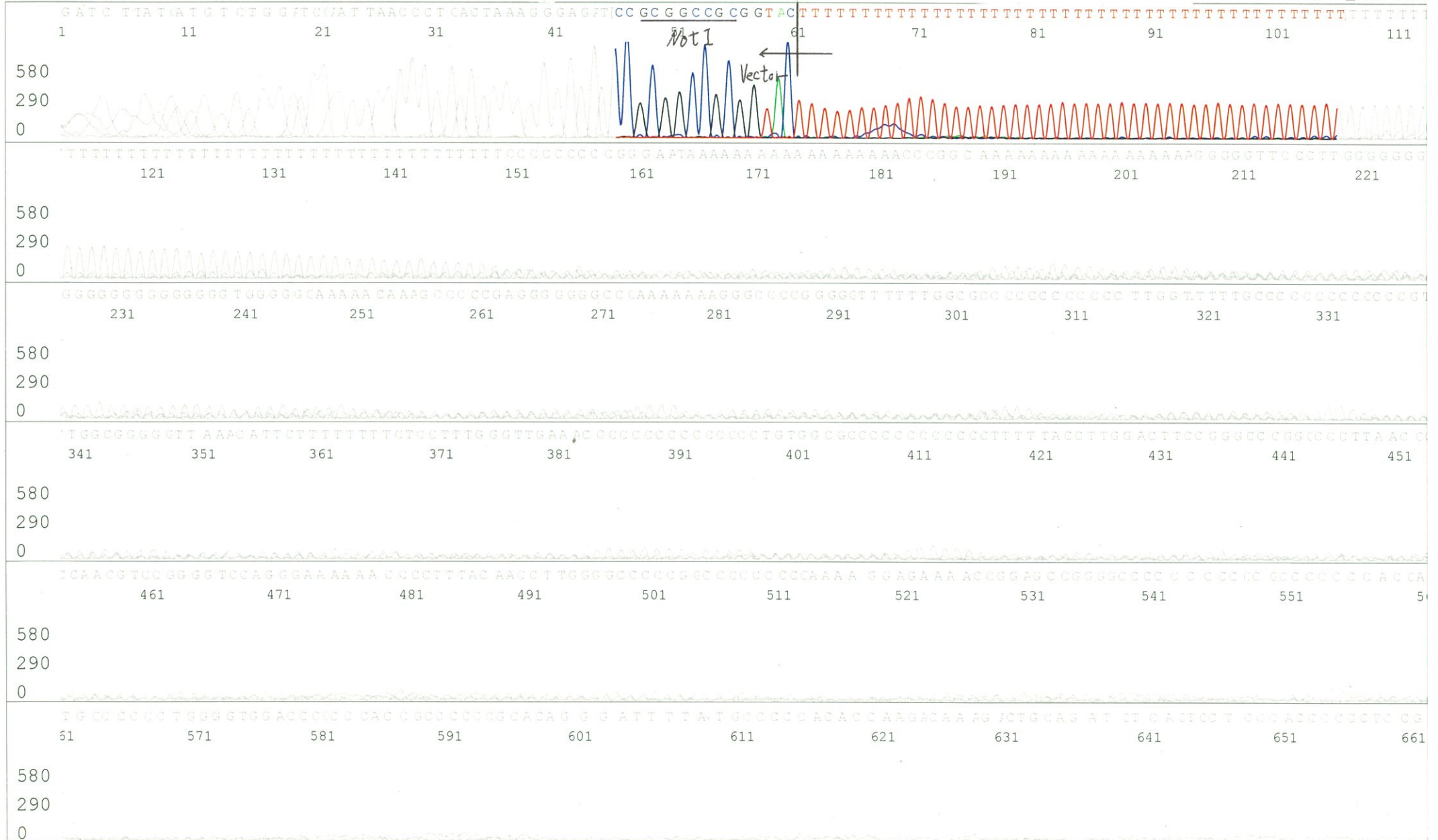
5' GCATTCTAGTTGTGGTTTGTCC 3'

Version 6.0 HiSQV Bases: 114

(QV) < 40.

Spacing:11.08 Pts/Panel1350

late Name: 20220331_KatoClone



S/N G:27 A:22 T:16 C:23
KB.bcp
KB 1.4.1.8 Cap:6

Primer C : Poly(A) region primer #0
5' TTTTTTTTTTTTTTTTTTTTVNN 3'

6608_RBdS022D05_B2Cs_GNPmixture
KB_3500_POP7_BDTv3.mob
Pts 1719 to 8702 Pk1 Loc:1687
Version 6.0 HiSQV Bases: 664 (QV) < 40.

Gray line indicates quality value

Mar 31,2022 09:42AM, JST
Mar 31,2022 09:59AM, JST
Spacing:11.07 Pts/Panel1350
late Name: 20220331_KatoClone

