

RIKEN Clone ID : RBdS007M03

Vector : pGCAP10

Gene	KIAA1383	
RefSeq_mRNA	NM_019090.3	4514 bp

● Plasmid DNA purification

Date : 22.08.15

Culture : LB (100 ug/ml Ampicillin) 5 ml -> at 37 deg C O/N

Date : 22.08.24

Purification : QIAGEN Miniprep kit -> dH₂O 100 ul

● Digestion by restriction enzyme/Concentration calibration

Date : 22.08.24

DNA concentration (O.D.): 362 ng/ul

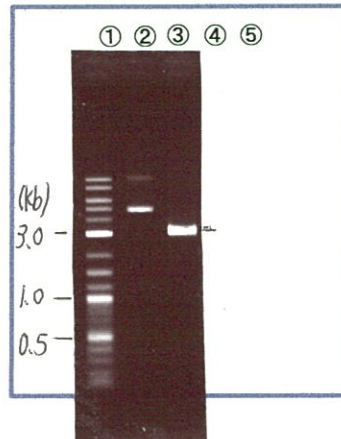
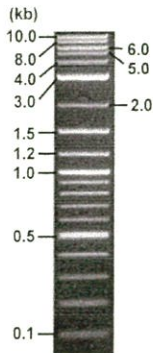
< Size of fragment expected from this clone >

DNA	<u>0.3</u>	ul
Enzyme (BamHI)		1 ul
Buffer H		1 ul
dH ₂ O	<u>7.7</u>	ul
Total		10 ul

BamHI 3.1kb (vector), 4.4 kb (unsure)

Electrophoresis : 1% agarose gel, 1x TAE Buffer

Marker : 2-Log DNA Ladder (NEB#N3200L)



①:Marker
②:uncut
③:BamHI

● Confirmation of the insertion sequence

Date : 22.12.2

Primer A	pGCAP-F
Primer B	pGCAP-R
Primer C	Poly(A) region
List of Sequencing Primers	http://dna.brc.riken.jp/en/NRCDhum2en.html

● Adjust plasmid DNA solution to 25 ng/ul

Date : 22.12.6

DNA (<u>362</u> ng/ul)	<u>84.0</u>	ul
10x TE	<u>121.6</u>	ul
dH ₂ O	<u>1010.7</u>	ul
Total	1216.3	ul

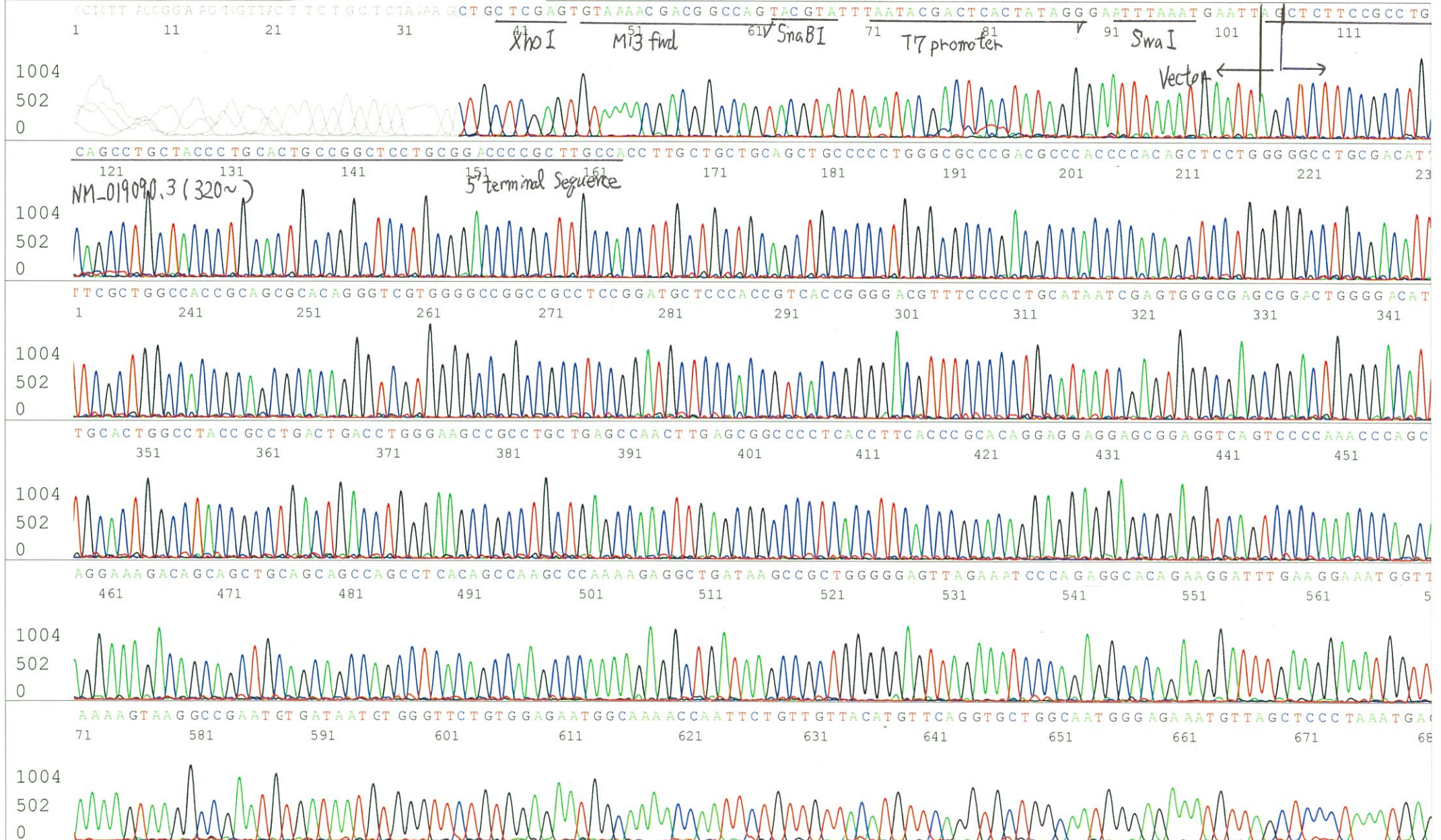
● Shipping

Conc. : 25 ng/μl, Volume : 40 μl

~~Conc. : ng/μl, Volume : μl~~

APPROVED BY :





S/N G:12 A:22 T:16 C:15

6608_RBdS007M03_B2Hf_GNP Mixture

Aug 25,2022 09:43AM, JST

KB.bcp

Primer C : Poly(A) region primer #0

KB_3500_POP7_BDTv3.mob

Gray line indicates quality value

Aug 25,2022 10:06AM, JST

KB 1.4.1.8 Cap:6

5' TTTTTTTTTTTTTTTTTTTTTT VNN 3'

Pts 1530 to 12412 Pk1 Loc:1513

(QV) < 40.

Spacing:13.9 Pts/Panel1350

Version 6.0 HiSQV Bases: 796

Plate Name: 20220825_GNP

