

**RIKEN Clone ID : RBdS007G09**

Vector : pGCAP10

Gene	KBTBD11	
RefSeq_mRNA	NM_014867.3	6911 bp

● Plasmid DNA purification

Date : 2022.01.19

Culture : LB (100 ug/ml Ampicillin) 5 ml -> at 37 deg C O/N

Date : 2022.01.20

Purification : QIAGEN Miniprep kit -> dH<sub>2</sub>O 100 ul

● Digestion by restriction enzyme/Concentration calibration

Date : 2022.01.20

DNA concentration (O.D.): 356 ng/ul

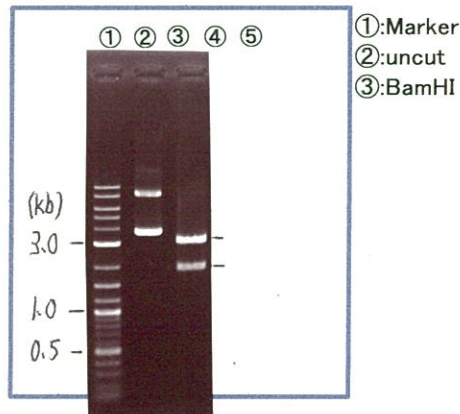
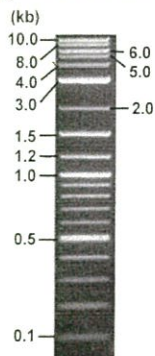
< Size of fragment expected from this clone >

DNA	ul
Enzyme (BamHI)	1 ul
Buffer H	1 ul
dH <sub>2</sub> O	ul
<b>Total</b>	<b>10 ul</b>

BamHI 3.1kb (vector), 7.2 kb (unsure)

Erectrophoresis : 1% agarose gel, 1x TAE Buffer

Marker : 2-Log DNA Ladder (NEB#N3200L)



● Confirmation of the insertion sequence

Date : 2022.03.08

Primer A	pGCAP-F
Primer B	pGCAP-R
Primer C	Poly(A) region
List of Sequencing Primers	<a href="http://dna.brc.riken.jp/en/NRCDhum2e.html">http://dna.brc.riken.jp/en/NRCDhum2e.html</a>

● Adjust plasmid DNA solution to 25 ng/ul

Date : 2022.03.18

DNA (356 ng/ul)	80.0 ul
10x TE	113.9 ul
dH <sub>2</sub> O	945.3 ul
<b>Total</b>	<b>1139.2 ul</b>

● Shipping



Conc. : 25 ng/μl, Volume : 40 μl



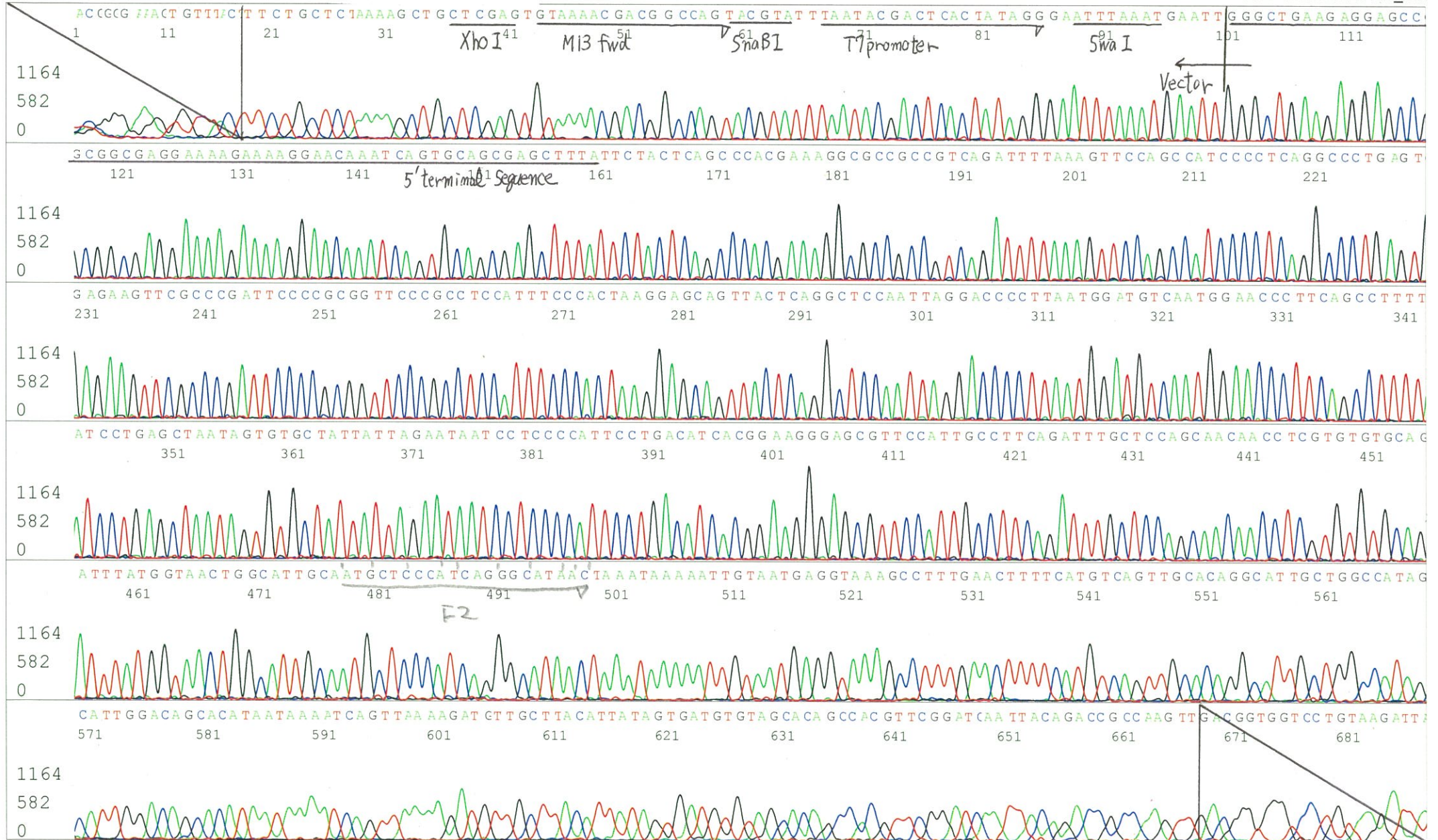
Conc. : \_\_\_ ng/μl, Volume : \_\_\_ μl

APPROVED BY :



S/N G:41 A:47 T:33 C:41  
KB.bcp  
KB 1.4.1.8 Cap:8

Primer A : pGCAP-F  
5' CTCAGTGGATGTTGCCTTTAC 3'





S/N G:24 A:25 T:13 C:15

Primer C : Poly(A) region primer #0

6608\_RBdS007G09\_B2Ak\_GNPmixture

KB\_3500\_POP7\_BDTv3.mob

Jan 20,2022 04:05PM, JST

KB.bcp

Pts 1672 to 8707 Pk1 Loc:1640

Jan 20,2022 04:21PM, JST

KB 1.4.1.8 Cap:15

5' TTTTTTTTTTTTTTTTTTTTTT VNN 3'

Version 6.0 HiSQV Bases: 644

Spacing:10.89 Pts/Panel1350

Plate Name: 20220120\_mix

