

D20

**RIKEN Clone ID : RBdS007B07**

Vector : pGCAP10

Gene	DLAT	
RefSeq_mRNA	NM_001931.5	3878 bp

● Plasmid DNA purification

Date : 2020.01.23

Culture : LB (100 ug/ml Ampicillin) 5 ml -> at 37 deg C O/N

Date : 2020.01.30

Purification : QIAGEN Miniprep kit -> dH<sub>2</sub>O 100 ul

● Digestion by restriction enzyme/Concentration calibration

Date : 2020.01.30

DNA concentration (O.D.): 326 ng/ul

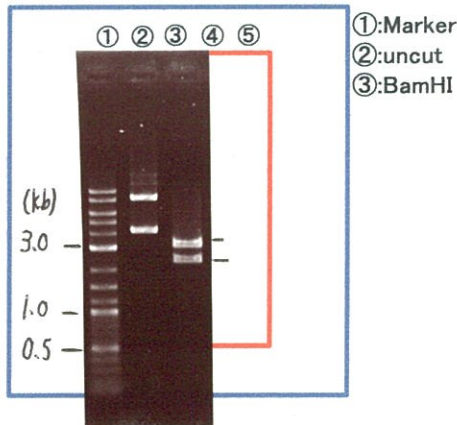
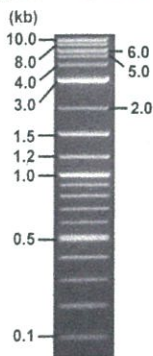
< Size of fragment expected from this clone >

DNA	0.3 ul
Enzyme (BamHI)	1 ul
Buffer H	1 ul
dH <sub>2</sub> O	7.7 ul
<b>Total</b>	<b>10 ul</b>

BamHI 3.1kb (vector), 4.1 kb (unsure)

Erectrophoresis : 1% agarose gel, 1x TAE Buffer

Marker : 2-Log DNA Ladder (NEB#N3200L)



● Confirmation of the insertion sequence

Date : 2021.04.27

Primer A	pGCAP-F
Primer B	pGCAP-R
Primer C	Poly(A) region
List of Sequencing Primers	<a href="http://dna.brc.riken.jp/en/NRCDhum2en.html">http://dna.brc.riken.jp/en/NRCDhum2en.html</a>

● Adjust plasmid DNA solution to 25 ng/ul

Date : 21.04.01

DNA ( 326 ng/ul)	80.0 ul
10x TE	104.3 ul
dH <sub>2</sub> O	858.9 ul
<b>Total</b>	<b>1043.2 ul</b>

● Shipping



Conc. : 25 ng/μl, Volume : 40 μl

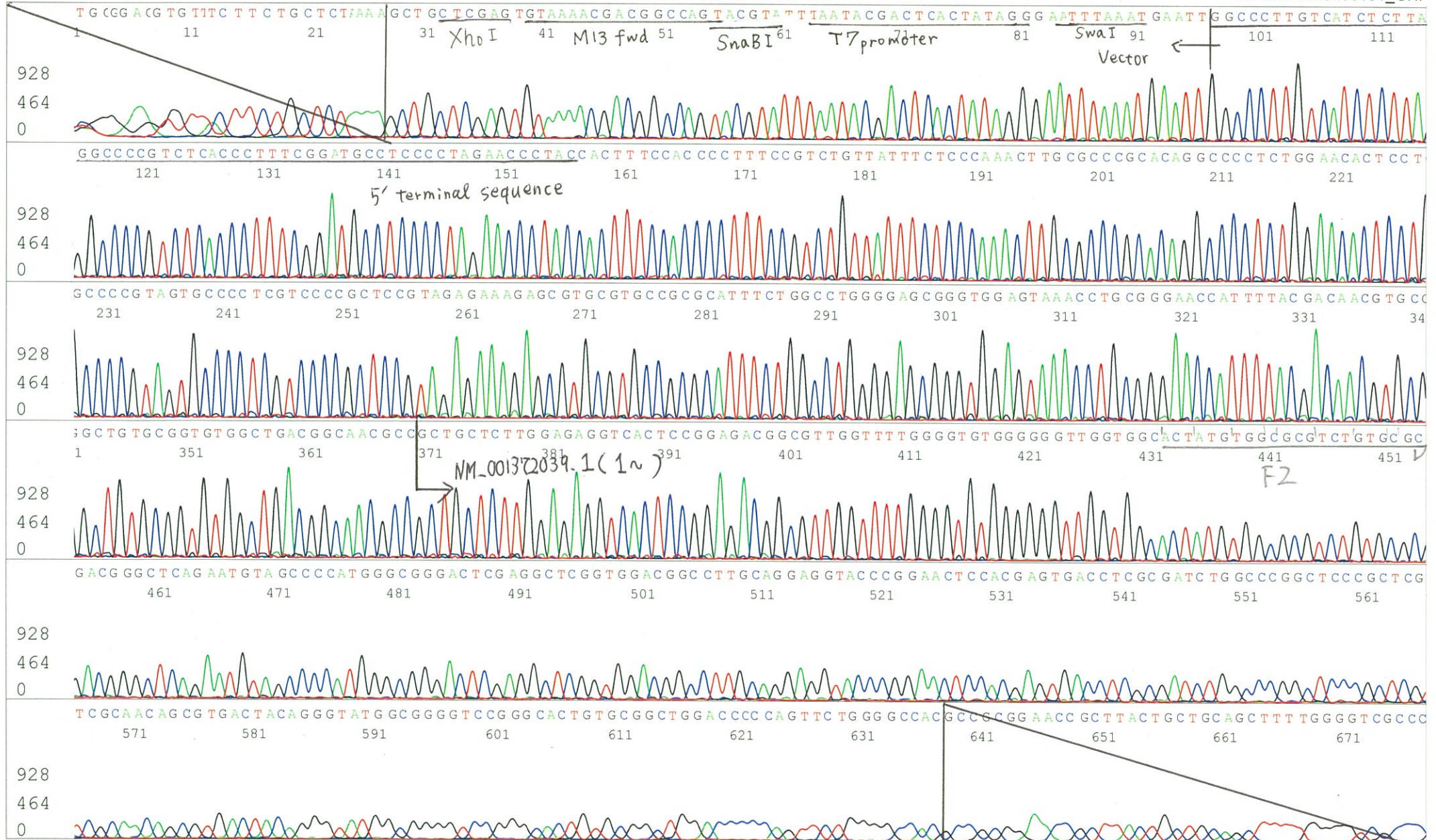


~~Conc. : 25 ng/μl, Volume : 40 μl~~



APPROVED BY :

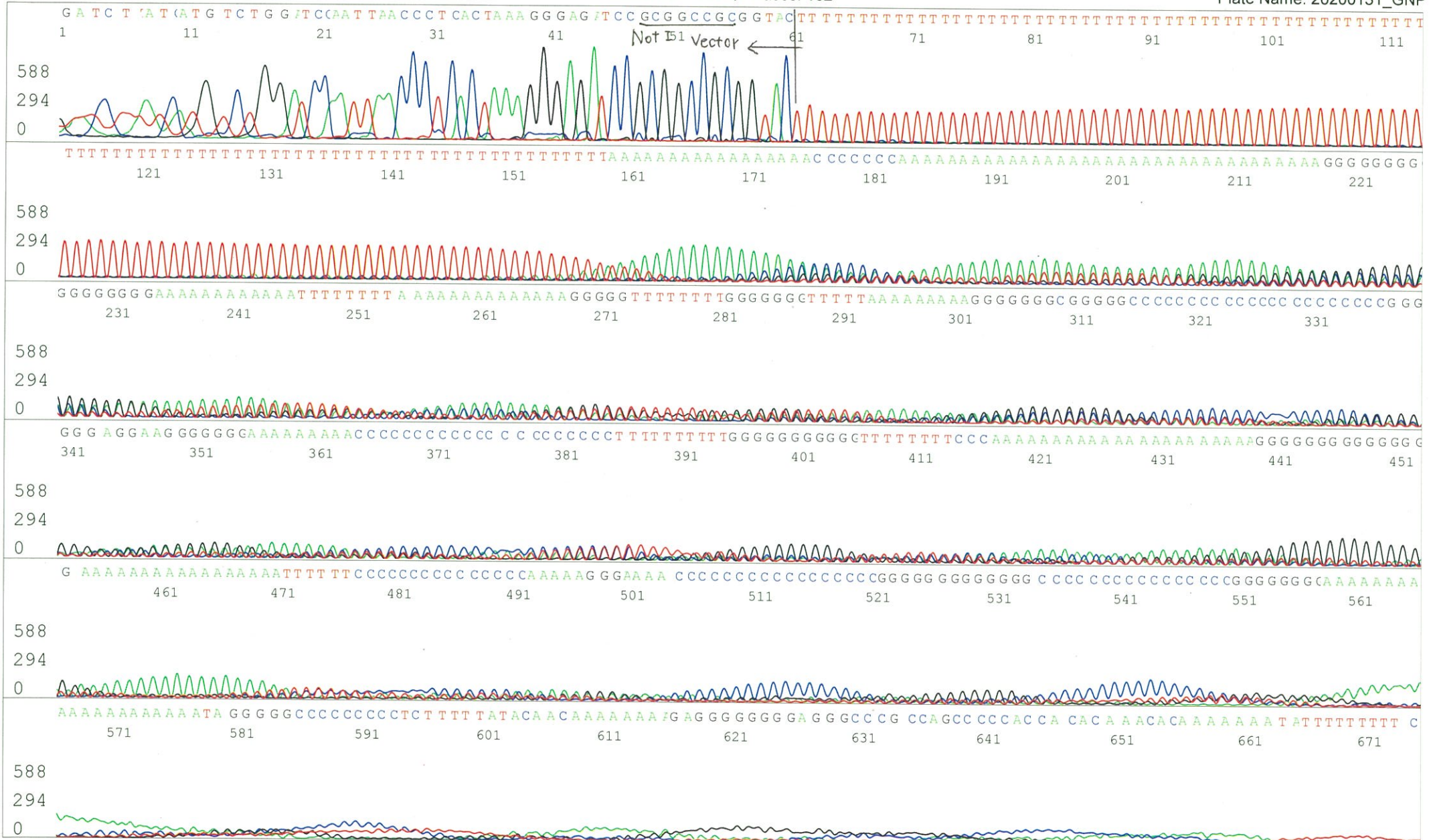
S/N G:192 A:137 T:100 C:177 Primer A : pGCAP-F  
KB.bcp  
KB 1.4.1.8 Cap:20 5' CTCAGTGGATGTTGCCTTTAC 3'



S/N G:36 A:48 T:49 C:31  
KB.bcp  
KB 1.4.1.8 Cap:23

Primer B : pGCAP-R

5' GCATTCTAGTTGTGGTTTTGTCC 3'



S/N G:24 A:21 T:12 C:13 Primer C : Poly(A) region primer #0  
KB.bcp  
KB 1.4.1.8 Cap:1 5' TTTTTTTTTTTTTTTTTTTTTVNN 3'

