

**RIKEN Clone ID : RBd97H09**

Vector : pGCAP10

Gene	DHX15	
RefSeq_mRNA	NM_001358.3	2998 bp

● Plasmid DNA purification

Date : 190313

Culture : LB (100 ug/ml Ampicillin) 5 ml -> at 37 deg C O/N

Date : 190315

Purification : QIAGEN Miniprep kit -> dH<sub>2</sub>O 100 ul

● Digestion by restriction enzyme/Concentration calibration

Date : 190315

DNA concentration (O.D.): 287 ng/ul

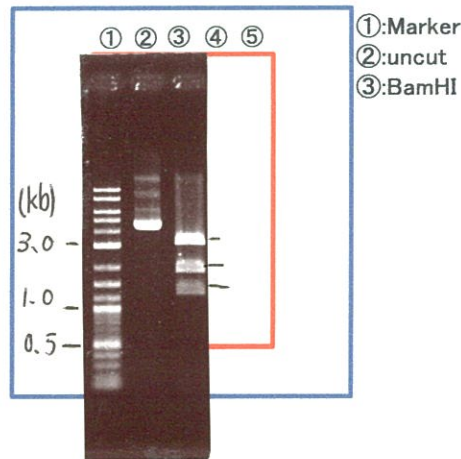
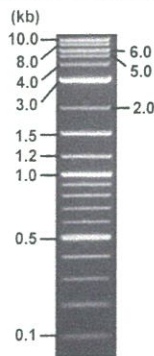
< Size of fragment expected from this clone >

DNA	<u>0.3</u> ul
Enzyme (BamHI)	1 ul
Buffer H	1 ul
dH <sub>2</sub> O	<u>7.7</u> ul
<b>Total</b>	<b>10 ul</b>

BamHI 3.1kb (vector), 1.9, 1.2, 0.1 kb (unsure)

Electrophoresis : 1% agarose gel, 1x TAE Buffer

Marker : 2-Log DNA Ladder (NEB#N3200L)



● Confirmation of the insertion sequence

Date : 190318

Primer A	pGCAP-F
Primer B	pGCAP-R
Primer C	Poly(A) region
List of Sequencing Primers	<a href="http://dna.brc.riken.jp/en/NRCDhum2en.html">http://dna.brc.riken.jp/en/NRCDhum2en.html</a>

● Adjust plasmid DNA solution to 25 ng/ul

Date : 21.04.01

DNA ( <u>287</u> ng/ul)	<u>70.0</u> ul
10x TE	<u>80.3</u> ul
dH <sub>2</sub> O	<u>653.3</u> ul
<b>Total</b>	<b><u>803.6</u> ul</b>

● Shipping



Conc. : 25 ng/μl, Volume : 40 μl



~~Conc. : 25 ng/μl, Volume : 40 μl~~



APPROVED BY :



