

RIKEN Clone ID : RBd93H10

Vector : pGCAP10

Gene	ATL2	
RefSeq_mRNA	NM_022374.5	4282 bp

● **Plasmid DNA purification**

Date : 20,10,21

Culture : LB (100 ug/ml Ampicillin) 5 ml -> at 37 deg C O/N

Date : 20,10,22

Purification : QIAGEN Miniprep kit -> dH₂O 100 ul

● **Digestion by restriction enzyme/Concentration calibration**

Date : 20,10,22

DNA concentration (O.D.): 358 ng/ul

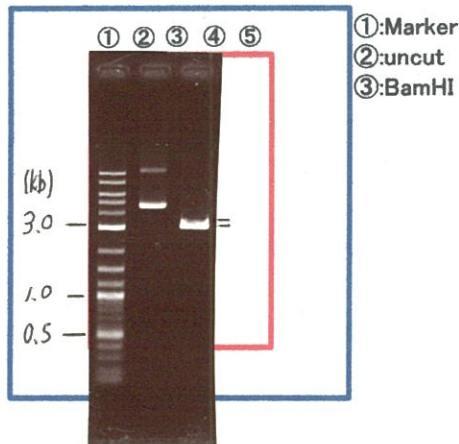
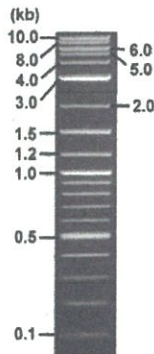
< Size of fragment expected from this clone >

DNA	<u>0.3</u> ul
Enzyme (BamHI)	1 ul
Buffer H	1 ul
dH ₂ O	<u>7.7</u> ul
Total	10 ul

BamHI 3.1kb (vector), 4.5 kb (unsure)

Electrophoresis : 1% agarose gel, 1x TAE Buffer

Marker : 2-Log DNA Ladder (NEB#N3200L)



● **Confirmation of the insertion sequence**

Date : 21,01,25

Primer A	pGCAP-F
Primer B	pGCAP-R
Primer C	Poly(A) region
List of Sequencing Primers	http://dna.brc.riken.jp/en/NRCDhum2en.html

● **Adjust plasmid DNA solution to 25 ng/ul**

Date : 21,03,30

DNA (<u>358</u> ng/ul)	<u>78.0</u> ul
10x TE	<u>111.6</u> ul
dH ₂ O	<u>927.3</u> ul
Total	1116.9 ul

● **Shipping**



Conc. : 25 ng/μl, Volume : 40 μl



~~Conc. : 25 ng/μl, Volume : 40 μl~~

APPROVED BY :



S/N G:142 A:195 T:105 C:150

Primer A : pGCAP-F

7677_RBd93H10_B0JI_pGCAP_F

Oct 23,2020 09:53AM, JST

KB.bcp

KB_3500_POP7_BDTv3.mob

Gray line indicates quality value

Oct 23,2020 10:08AM, JST

KB 1.4.1.8 Cap:12

5' CTCAGTGGATGTTGCC^{TTT}TAC 3'

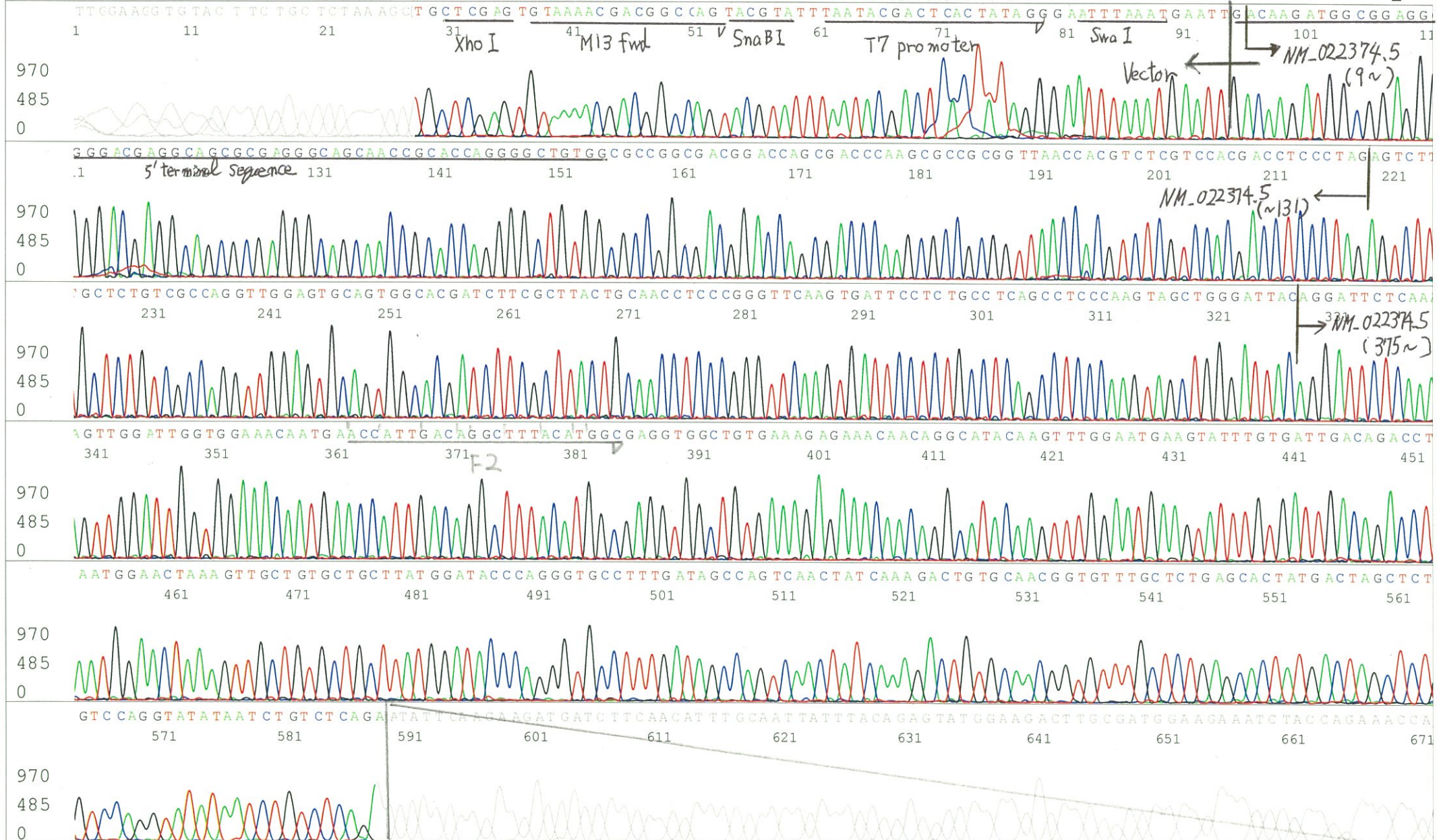
Pts 1774 to 8707 Pk1 Loc:1742

(QV) < 40.

Spacing:10.45 Pts/Panel1350

Version 6.0 HiSQV Bases: 664

Plate Name: 20201023_GNP



S/N G:15 A:21 T:13 C:14

Primer C : Poly(A) region primer #0

7677_RBd93H10_B0JI_GNPmixture

Oct 27,2020 09:55AM, JST

KB.bcp

KB_3500_POP7_BDTv3.mob

Gray line indicates quality value

Oct 27,2020 10:10AM, JST

KB 1.4.1.8 Cap:4

5' TTTTTTTTTTTTTTTTTTTTTTVNN 3'

Pts 1808 to 8648 Pk1 Loc:1776

(QV) < 40.

Spacing:10.15 Pts/Panel1350

Version 6.0 HiSQV Bases: 641

Plate Name: 20201027_GNP

