

RIKEN Clone ID : RBd75A11

Vector : pGCAP10

Gene	C9orf21	
RefSeq_mRNA	NM_153698.2	2899 bp

● Plasmid DNA purification

Date : 191219

Culture : LB (100 ug/ml Ampicillin) 5 ml -> at 37 deg C O/N

Date : 191223

Purification : QIAGEN Miniprep kit -> dH₂O 100 ul

● Digestion by restriction enzyme/Concentration calibration

Date : 191223

DNA concentration (O.D.): 264 ng/ul

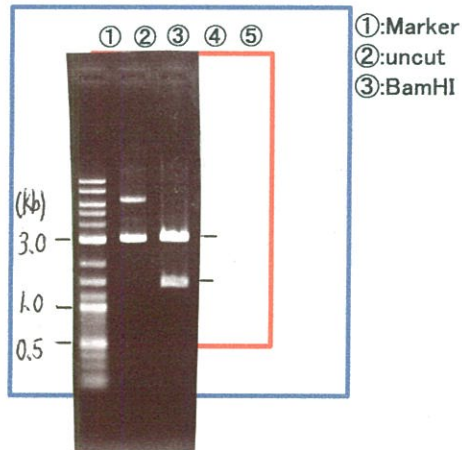
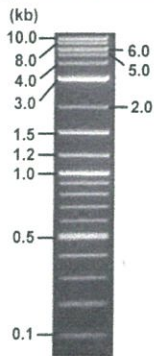
< Size of fragment expected from this clone >

DNA	<u>0.4</u> ul
Enzyme (BamHI)	1 ul
Buffer H	1 ul
dH ₂ O	<u>7.6</u> ul
Total	10 ul

BamHI 3.1kb (vector), 3.1 kb (unsure)

Electrophoresis : 1% agarose gel, 1x TAE Buffer

Marker : 2-Log DNA Ladder (NEB#N3200L)



● Confirmation of the insertion sequence

Date : 191225

Primer A	pGCAP-F
Primer B	pGCAP-R
Primer C	Poly(A) region
List of Sequencing Primers	http://dna.brc.riken.jp/en/NRCDhum2en.html

● Adjust plasmid DNA solution to 25 ng/ul

Date : 21.04.01

DNA (<u>264</u> ng/ul)	<u>86.0</u> ul
10x TE	<u>90.8</u> ul
dH ₂ O	<u>731.3</u> ul
Total	<u>908.1</u> ul

● Shipping



Conc. : 25 ng/μl, Volume : 40 μl



~~Conc. : 25 ng/μl, Volume : 40 μl~~

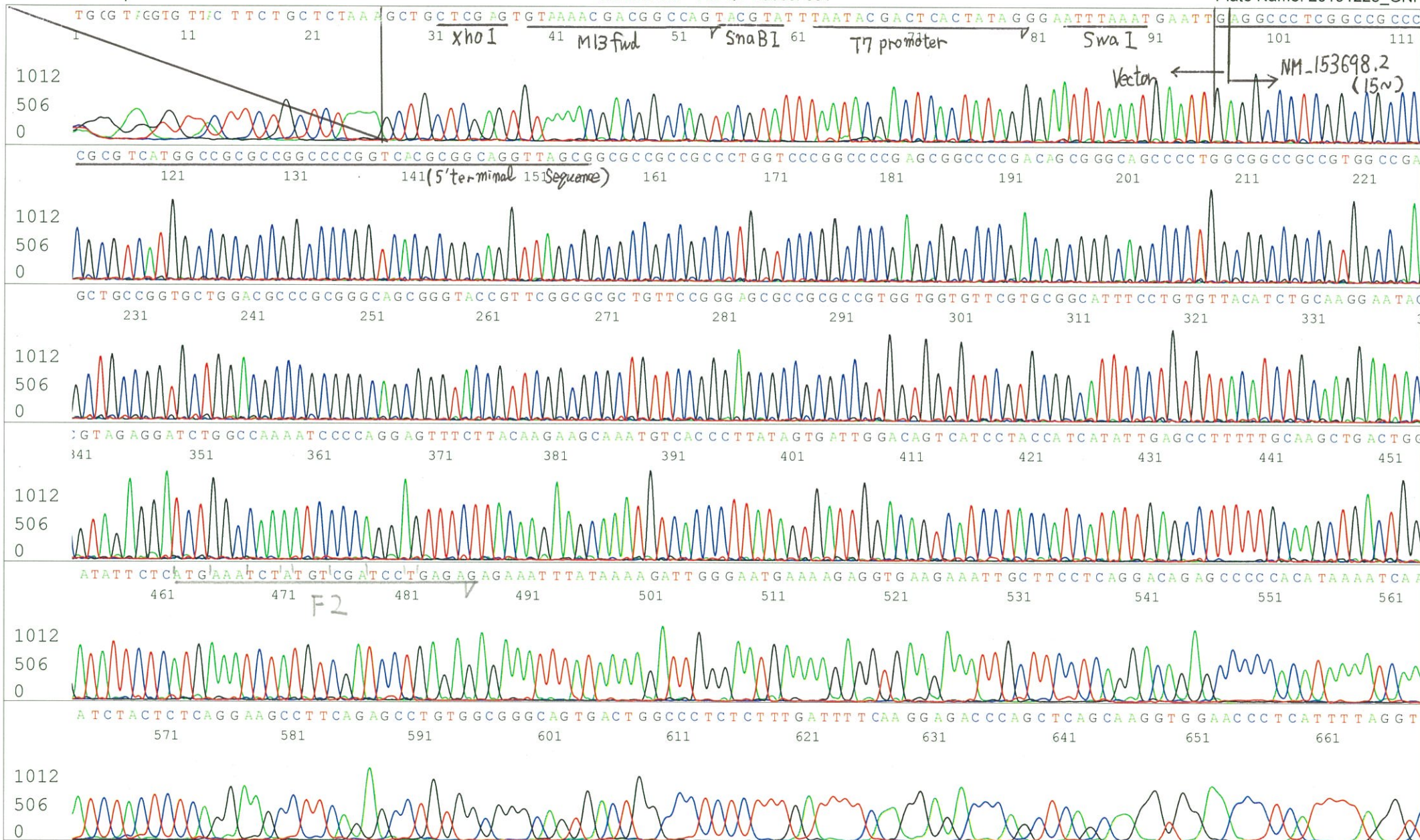


APPROVED BY :

S/N G:202 A:222 T:121 C:231
KB.bcp
KB 1.4.1.8 Cap:10

Primer A : pGCAP-F

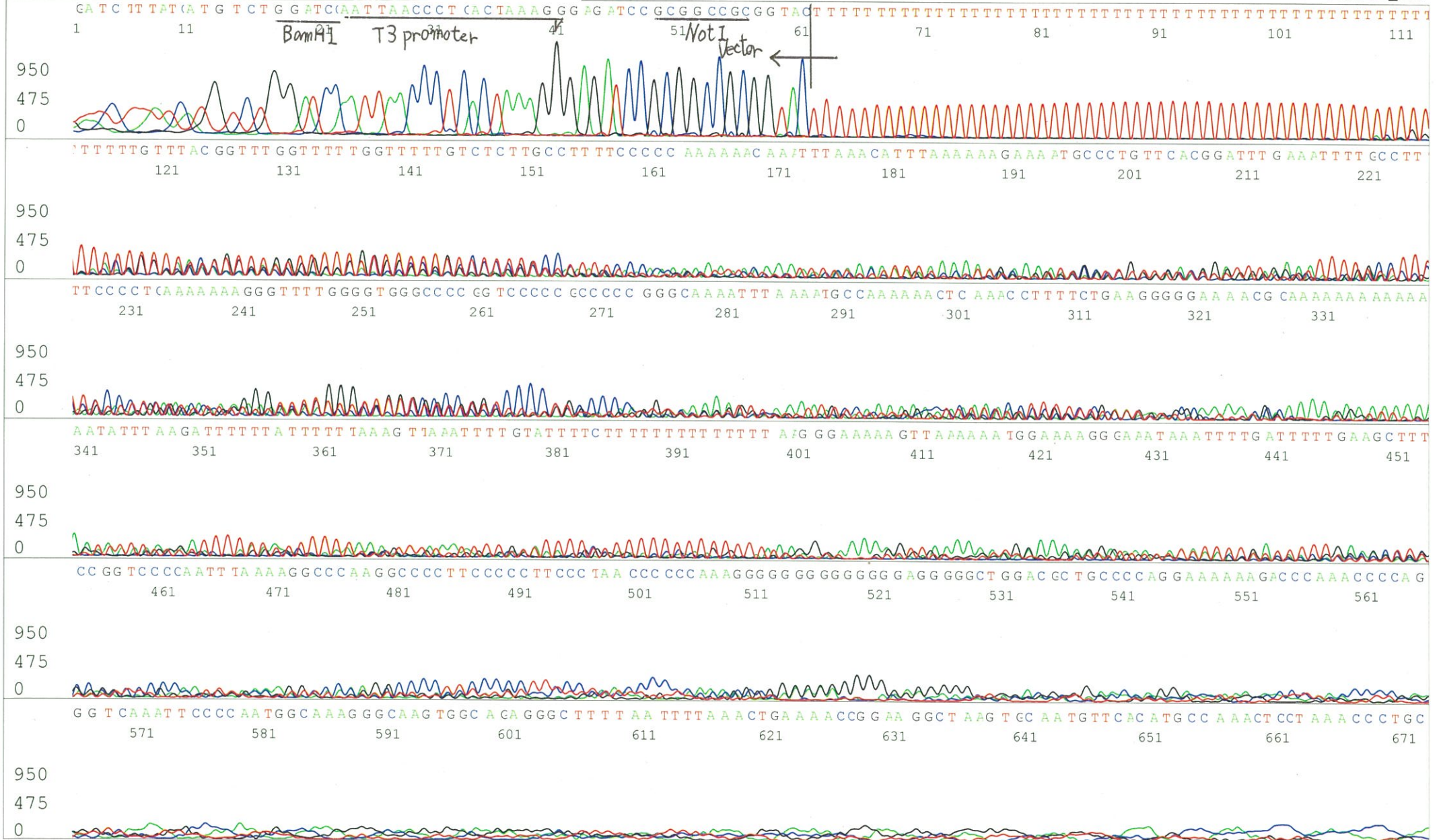
5' CTCAGTGGATGTTGCCTTTAC 3'



S/N G:65 A:87 T:87 C:72
KB.bcp
KB 1.4.1.8 Cap:13

Primer B : pGCAP-R

5' GCATTCTAGTTGTGGTTTGTCC 3'



S/N G:23 A:29 T:19 C:20

Primer C : Poly(A) region primer #0

7677_RBd75A11_A9Ln_GNP Mixture

Dec 25,2019 09:41AM, JST

KB.bcp

KB_3500_POP7_BDTv3.mob

Dec 25,2019 09:55AM, JST

KB 1.4.1.8 Cap:16

5' TTTTTTTTTTTTTTTTTTTTTTNNN 3'

Pts 1728 to 8706 Pk1 Loc:1696

Spacing:10.59 Pts/Panel1350

Version 6.0 HiSQV Bases: 657

Plate Name: 20191225_GNP

