

RIKEN Clone ID : RBd73C09

Vector : pGCAP10

Gene	CREM	
RefSeq_mRNA	NM_001881.3	1304 bp

● Plasmid DNA purification

Date : 2020.01.14

Culture : LB (100 ug/ml Ampicillin) 5 ml -> at 37 deg C O/N

Date : 2020.01.22

Purification : QIAGEN Miniprep kit -> dH₂O 100 ul

● Digestion by restriction enzyme/Concentration calibration

Date : 2020.01.22

DNA concentration (O.D.): 315 ng/ul

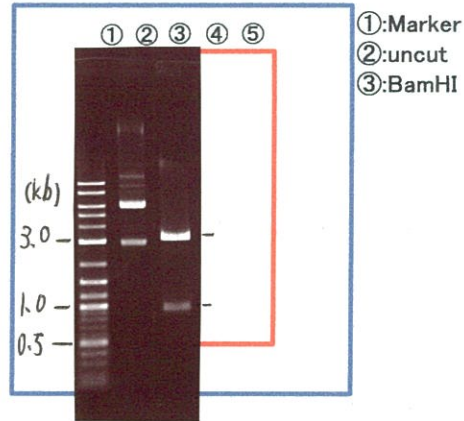
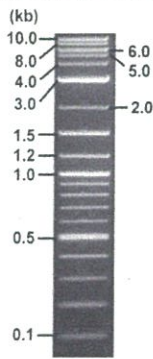
< Size of fragment expected from this clone >

DNA	0.3 ul
Enzyme (BamHI)	1 ul
Buffer H	1 ul
dH ₂ O	7.7 ul
Total	10 ul

BamHI 3.1kb (vector), 1.4 kb (unsure)

Electrophoresis : 1% agarose gel, 1x TAE Buffer

Marker : 2-Log DNA Ladder (NEB#N3200L)



● Confirmation of the insertion sequence

Date : 2021.04.27

Primer A	pGCAP-F
Primer B	pGCAP-R
Primer C	Poly(A) region
List of Sequencing Primers	http://dna.brc.riken.jp/en/NRCDCHum2en.html

● Adjust plasmid DNA solution to 25 ng/ul

Date : 21.04.01

DNA (315 ng/ul)	80.0 ul
10x TE	100.8 ul
dH ₂ O	827.2 ul
Total	1008.0 ul

● Shipping

Conc. : 25 ng/ul, Volume : 40 ul

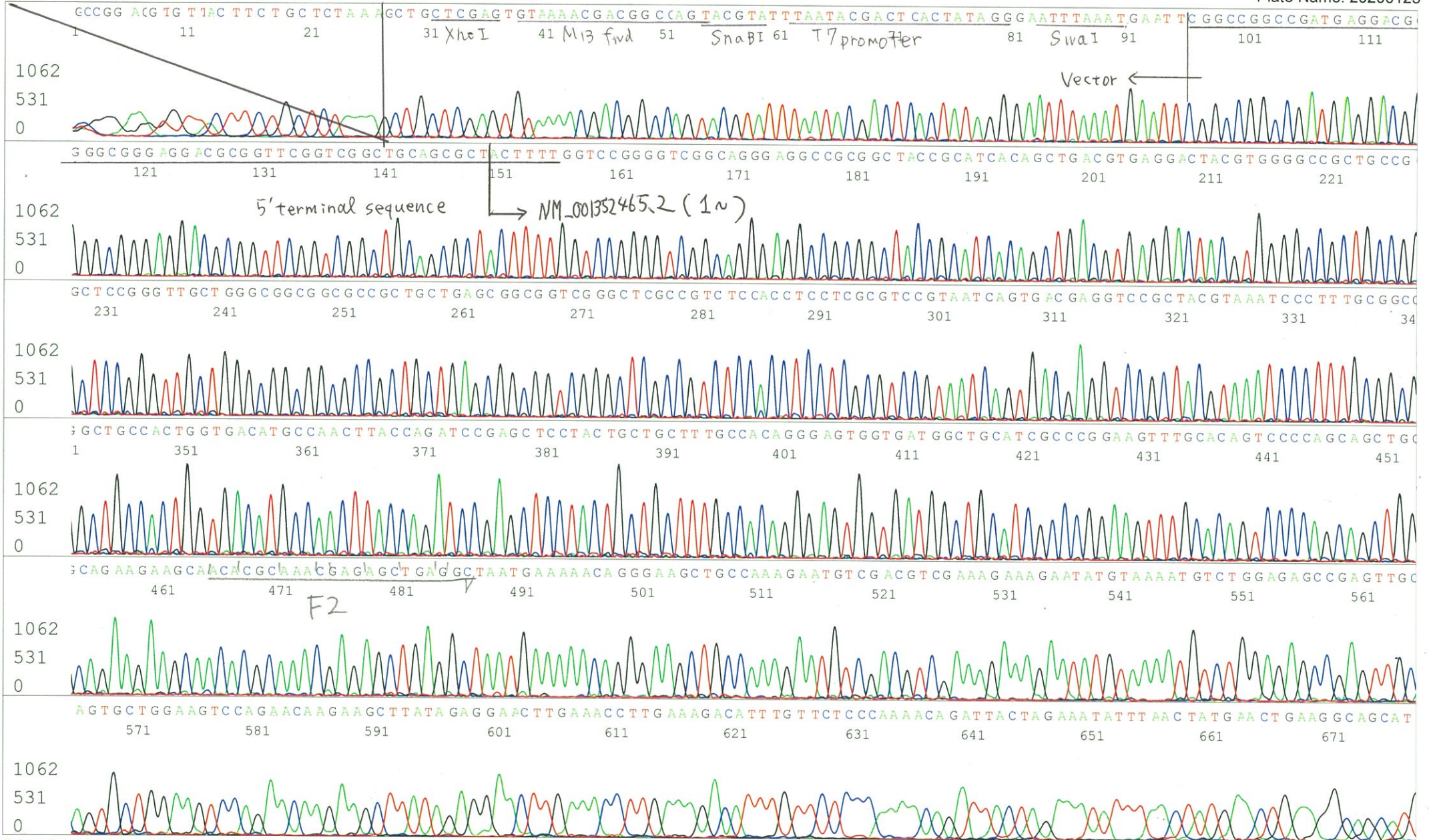
~~Conc. : 25 ng/ul, Volume : 40 ul~~

APPROVED BY :



S/N G:115 A:98 T:55 C:102
KB.bcp
KB 1.4.1.8 Cap:19

Primer A : pGCAP-F
5' CTCAGTGGATGTTGCCTTTAC 3'



S/N G:27 A:31 T:52 C:29
KB.bcp
KB 1.4.1.8 Cap:22

Primer B : pGCAP-R
5' GCATTCTAGTTGTGGTTTGTCC 3'

