

RIKEN Clone ID : RBd35D12

Vector : pGCAP10

Gene	PLCG1	
RefSeq_mRNA	NM_002660.3	7092 bp

● Plasmid DNA purification

Date : 23.02.20

Culture : LB (100 ug/ml Ampicillin) 5 ml → at 37 deg C O/N

Date : 23.02.21

Purification : QIAGEN Miniprep kit → dH₂O 100 ul

● Digestion by restriction enzyme/Concentration calibration

Date : 23.02.21

DNA concentration (O.D.): 231 ng/ul

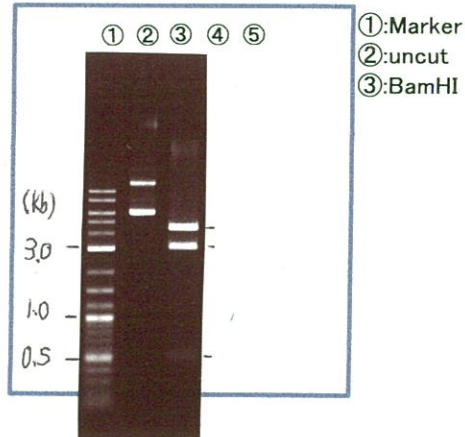
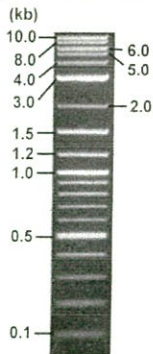
< Size of fragment expected from this clone >

DNA	0.45 ul
Enzyme (BamHI)	1 ul
Buffer H	1 ul
dH ₂ O	7.55 ul
Total	10 ul

BamHI 3.1kb (vector), 4.4, 2.9 kb (unsure)

Electrophoresis : 1% agarose gel, 1x TAE Buffer

Marker : 2-Log DNA Ladder (NEB#N3200L)



● Confirmation of the insertion sequence

Date : 23.06.21

Primer A	pGCAP-F
Primer B	pGCAP-R
Primer C	Poly(A) region
List of Sequencing Primers	http://dna.brc.riken.jp/en/NRCDhum2en.html

● Adjust plasmid DNA solution to 25 ng/ul

Date : 23.06.22

DNA (231 ng/ul)	80.0 ul
10x TE	73.9 ul
dH ₂ O	585.3 ul
Total	739.2 ul

● Shipping



Conc. : 25 ng/μl, Volume : 40 μl



~~Conc. : — ng/μl, Volume : — μl~~

APPROVED BY :



S/N G:541 A:576 T:298 C:687

Primer A : pGCAP-F

7677_RBd35D12_B3Bd_pGCAP_F

Feb 24, 2023 10:20AM, JST

KB.bcp

KB_3500_POP7_BDTv3.mob

Gray line indicates quality value

Feb 24, 2023 10:41AM, JST

KB 1.4.1.8 Cap:5

5' CTCAGTGGATGTTGCCTTTAC 3'

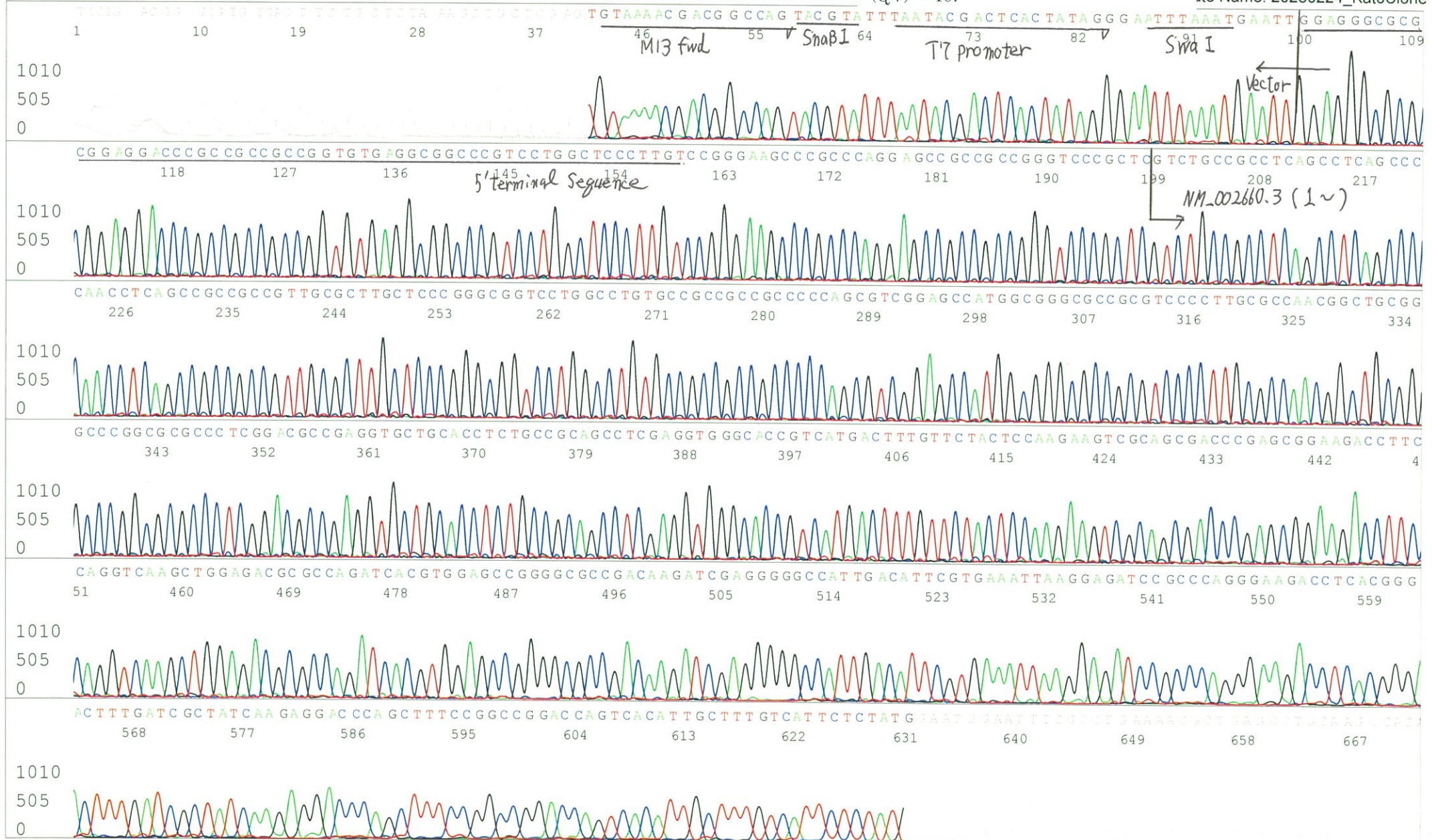
Pts 1697 to 12054 PK1 Loc:1680

(QV) < 40.

Spacing:12.96 Pts/Panel1350

Version 6.0 HiSQV Bases: 731

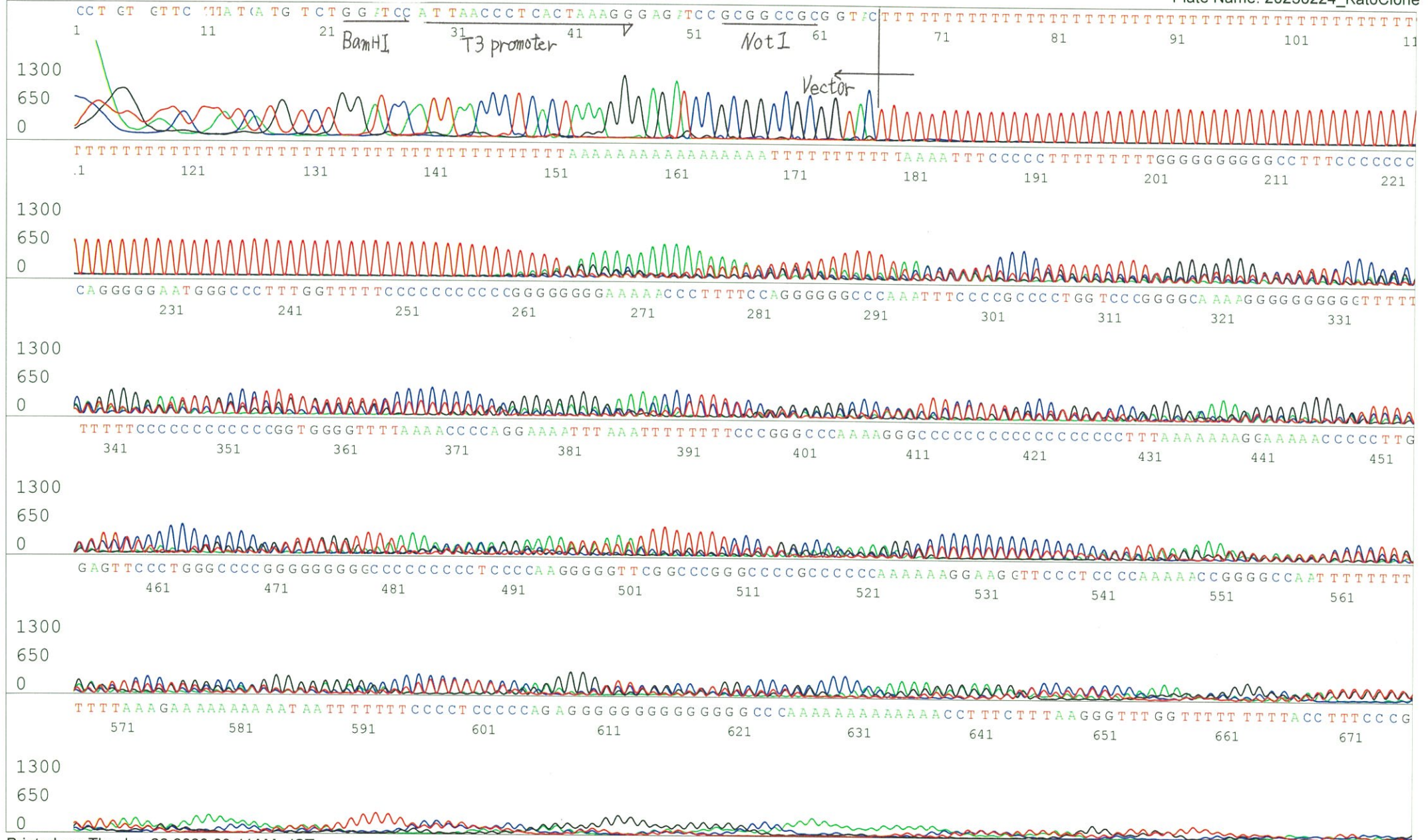
ate Name: 20230224_KatoClone



S/N G:122 A:162 T:173 C:200
KB.bcp
KB 1.4.1.8 Cap:8

Primer B : pGCAP-R

5' GCATTCTAGTTGTGGTTTGTCC 3'



S/N G:215 A:223 T:180 C:312

KB.bcp

KB 1.4.1.8 Cap:11

Primer C : Poly(A) region primer #0

5' TTTTTTTTTTTTTTTTTTTTVNN 3'

7677_RBd35D12_B3Bd_GNPmixture

KB_3500_POP7_BDTv3.mob

Pts 1687 to 11992 Pk1 Loc:1670

Version 6.0 HiSQV Bases: 756 (QV) < 40.

Gray line indicates quality value

Feb 24,2023 10:20AM, JST

Feb 24,2023 10:41AM, JST

Spacing:12.92 Pts/Panel1350

Plate Name: 20230224_KatoClone

