

**RIKEN Clone ID : RBd27D07**

Vector : pGCAP10

Gene	CNNM1	
RefSeq_mRNA	NM_020348.3	5702 bp

● Plasmid DNA purification

Date : 200114

Culture : LB (100 ug/ml Ampicillin) 5 ml -> at 37 deg C O/N

Date : 200122

Purification : QIAGEN Miniprep kit -> dH<sub>2</sub>O 100 ul

● Digestion by restriction enzyme/Concentration calibration

Date : 200122

DNA concentration (O.D.): 247 ng/ul

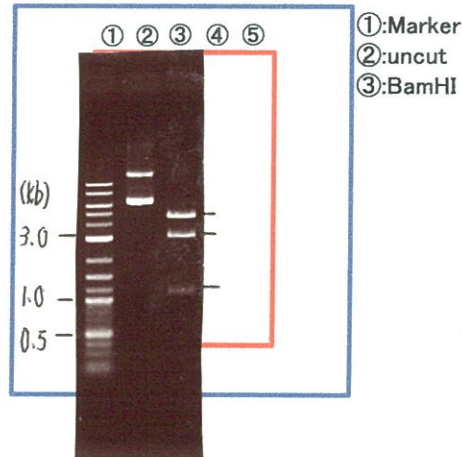
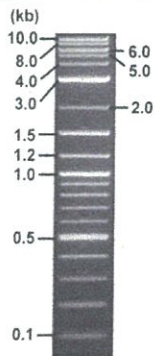
< Size of fragment expected from this clone >

DNA	<u>0.4</u> ul
Enzyme (BamHI)	1 ul
Buffer H	1 ul
dH <sub>2</sub> O	<u>7.6</u> ul
Total	10 ul

BamHI 3.1kb (vector), 4.8, 1.2 kb (unsure)

Electrophoresis : 1% agarose gel, 1x TAE Buffer

Marker : 2-Log DNA Ladder (NEB#N3200L)



● Confirmation of the insertion sequence

Date : 210310

Primer A	pGCAP-F
Primer B	pGCAP-R
Primer C	poly(A) primer #33
List of Sequencing Primers	<a href="http://dna.brc.riken.jp/en/NRCDhum2en.html">http://dna.brc.riken.jp/en/NRCDhum2en.html</a>

● Adjust plasmid DNA solution to 25 ng/ul

Date : 21,03,30

DNA ( <u>247</u> ng/ul)	<u>61.0</u> ul
10x TE	<u>60.2</u> ul
dH <sub>2</sub> O	<u>481.4</u> ul
Total	<u>602.6</u> ul

● Shipping



Conc. : 25 ng/μl, Volume : 40 μl



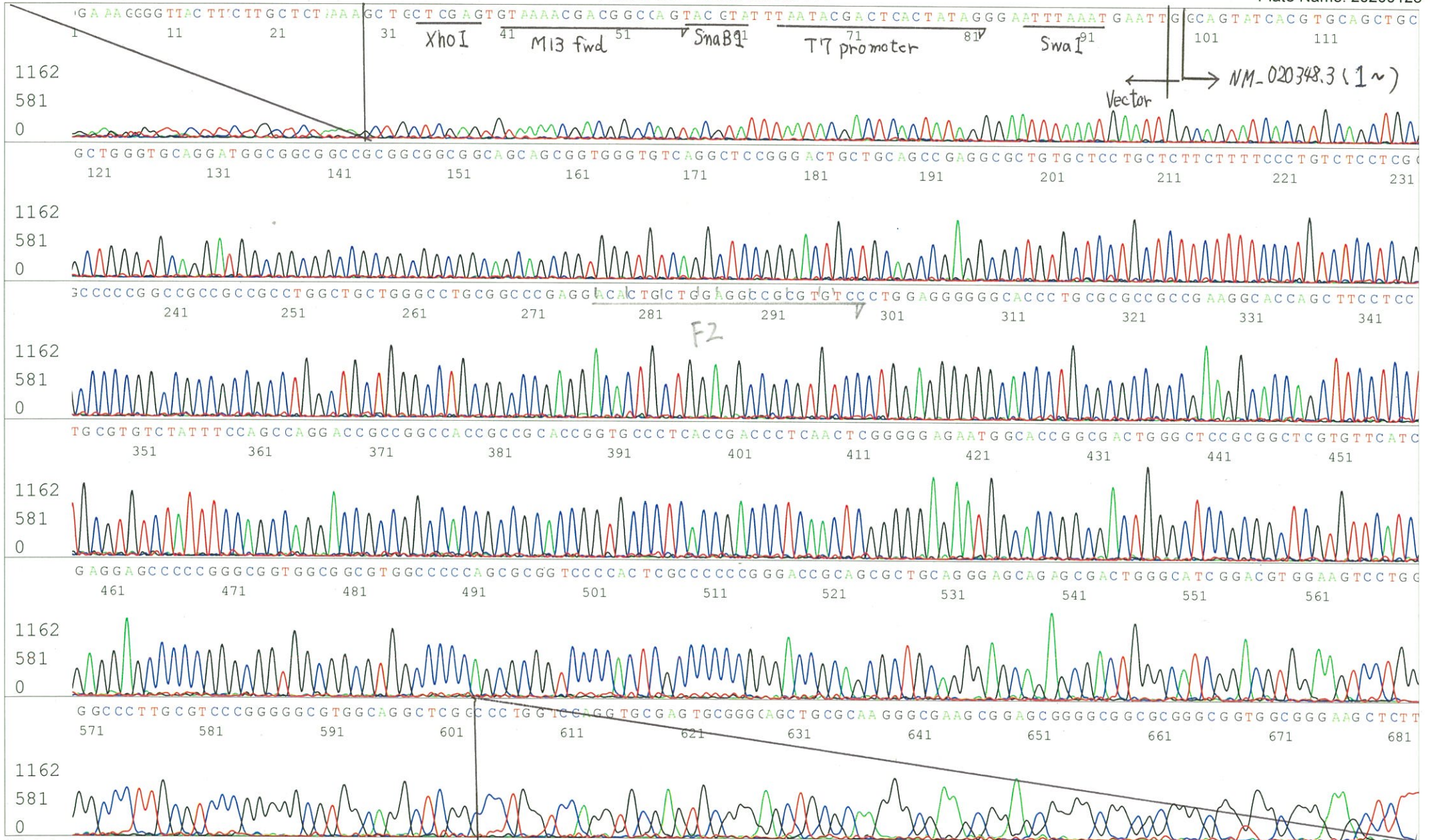
~~Conc. : \_\_\_\_\_ ng/μl, Volume : \_\_\_\_\_ μl~~



APPROVED BY :

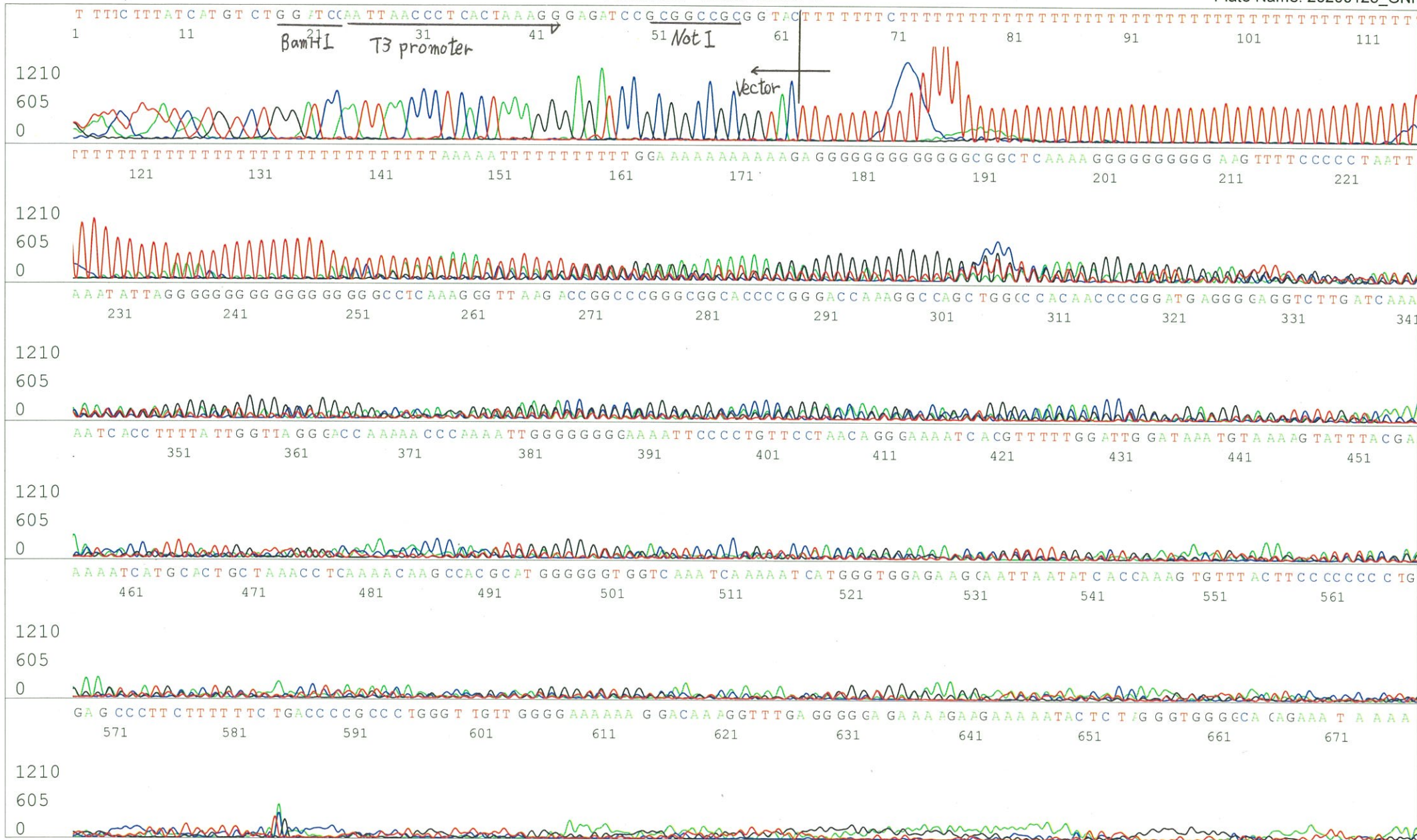
S/N G:30 A:18 T:14 C:28  
KB.bcp  
KB 1.4.1.8 Cap:18

Primer A : pGCAP-F  
5' CTCAGTGGATGTTGCCTTTAC 3'



S/N G:22 A:18 T:13 C:12  
KB.bcp  
KB 1.4.1.8 Cap:2

Primer B : pGCAP-R  
5' GCATTCTAGTTGTGGTTTGTCC 3'



S/N G:255 A:239 T:142 C:164

Primer C : Poly(A) region primer #33

7677\_RBd27D07\_B0Af\_GNP33

Mar 03,2021 02:00PM, JST

KB.bcp

KB\_3500\_POP7\_BDTv3.mob

Mar 03,2021 02:15PM, JST

KB 1.4.1.8 Cap:17

5' TTTTTTTTTTTTTTTTTTTTTT AAAA 3'

Pts 1693 to 8706 Pk1 Loc:1661

Spacing:10.68 Pts/Panel1350

Version 6.0 HiSQV Bases: 684

Plate Name: 20210303\_KatoClone

