

A15

**RIKEN Clone ID : RBd19A02**

Vector : pGCAP10

Gene	ADCY3	
RefSeq_mRNA	NM_004036.5	4950 bp

● Plasmid DNA purification

Date : 191219

Culture : LB (100 ug/ml Ampicillin) 5 ml -> at 37 deg C O/N

Date : 191223

Purification : QIAGEN Miniprep kit -> dH<sub>2</sub>O 100 ul

● Digestion by restriction enzyme/Concentration calibration

Date : 191223

DNA concentration (O.D.): 211 ng/ul

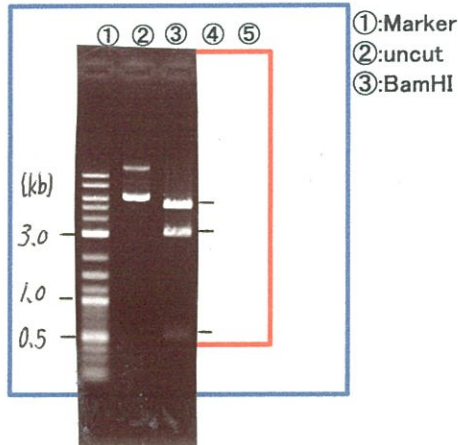
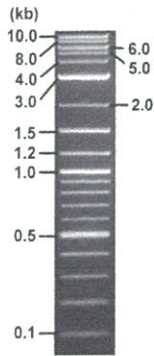
< Size of fragment expected from this clone >

DNA	<u>0.5</u> ul
Enzyme (BamHI)	1 ul
Buffer H	1 ul
dH <sub>2</sub> O	<u>7.5</u> ul
Total	10 ul

BamHI 3.1kb (vector), 4.6, 0.6 kb (unsure)

Erectrophoresis : 1% agarose gel, 1x TAE Buffer

Marker : 2-Log DNA Ladder (NEB#N3200L)



● Confirmation of the insertion sequence

Date : 21.03.01

Primer A	pGCAP-F
Primer B	pGCAP-R
Primer C	Poly(A) region
List of Sequencing Primers	<a href="http://dna.brc.riken.jp/en/NRCDhum2e.html">http://dna.brc.riken.jp/en/NRCDhum2e.html</a>

● Adjust plasmid DNA solution to 25 ng/ul

Date : 21,03,30

DNA ( <u>211</u> ng/ul)	<u>62.0</u> ul
10x TE	<u>52.3</u> ul
dH <sub>2</sub> O	<u>408.9</u> ul
Total	<u>523.2</u> ul

● Shipping



Conc. : 25 ng/μl, Volume : 40 μl



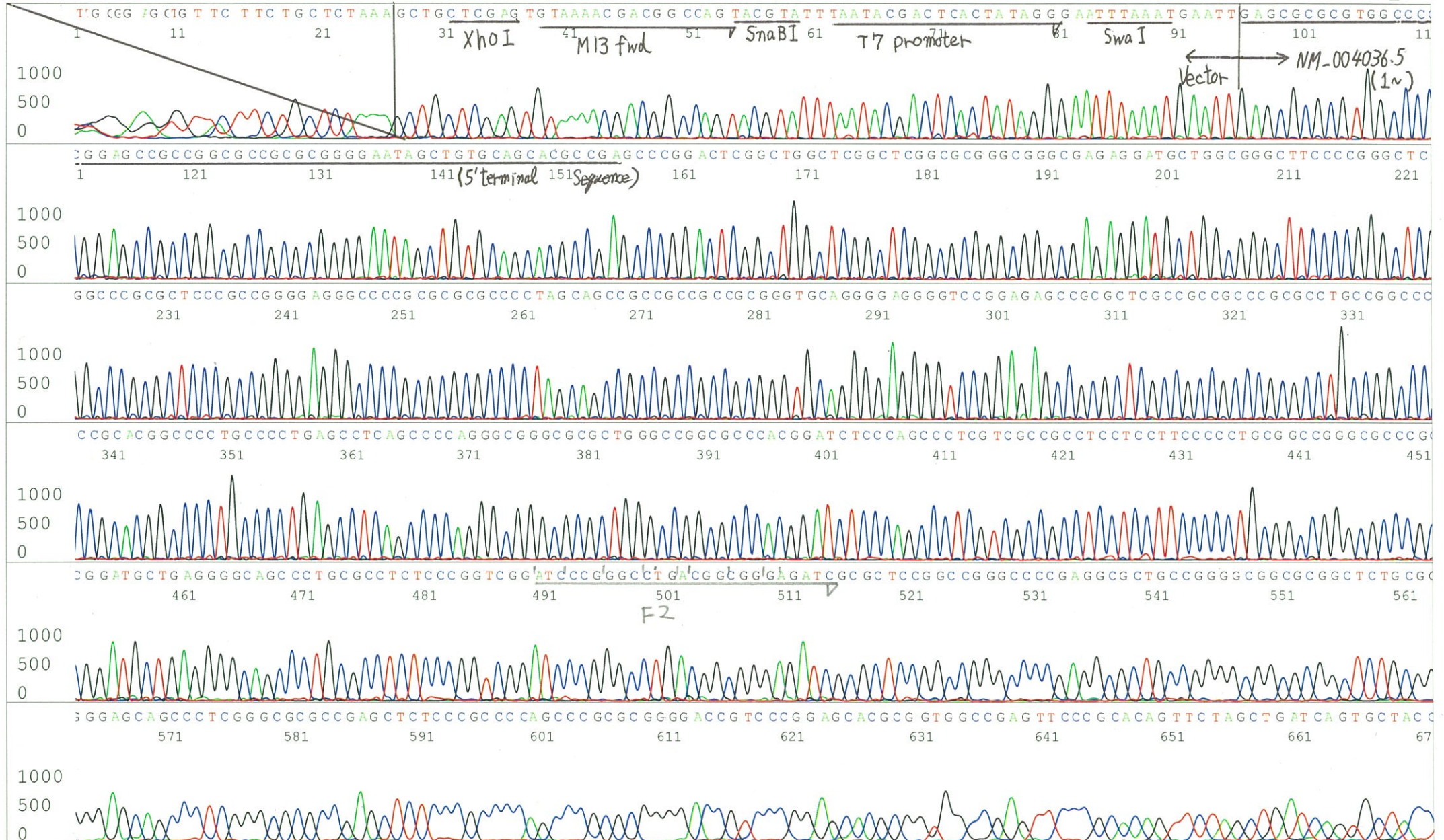
~~Conc. : 25 ng/μl, Volume : 40 μl~~

APPROVED BY :



S/N G:126 A:70 T:49 C:144  
KB.bcp  
KB 1.4.1.8 Cap:1

Primer A : pGCAP-F  
5' CTCAGTGGATGTTGCCTTTAC 3'



S/N G:31 A:35 T:27 C:35

Primer B : pGCAP-R

7677\_RBd19A02\_A9Ln\_pGCAP\_R

Dec 25,2019 09:41AM, JST

KB.bcp

KB\_3500\_POP7\_BDTv3.mob

Dec 25,2019 09:55AM, JST

KB 1.4.1.8 Cap:4

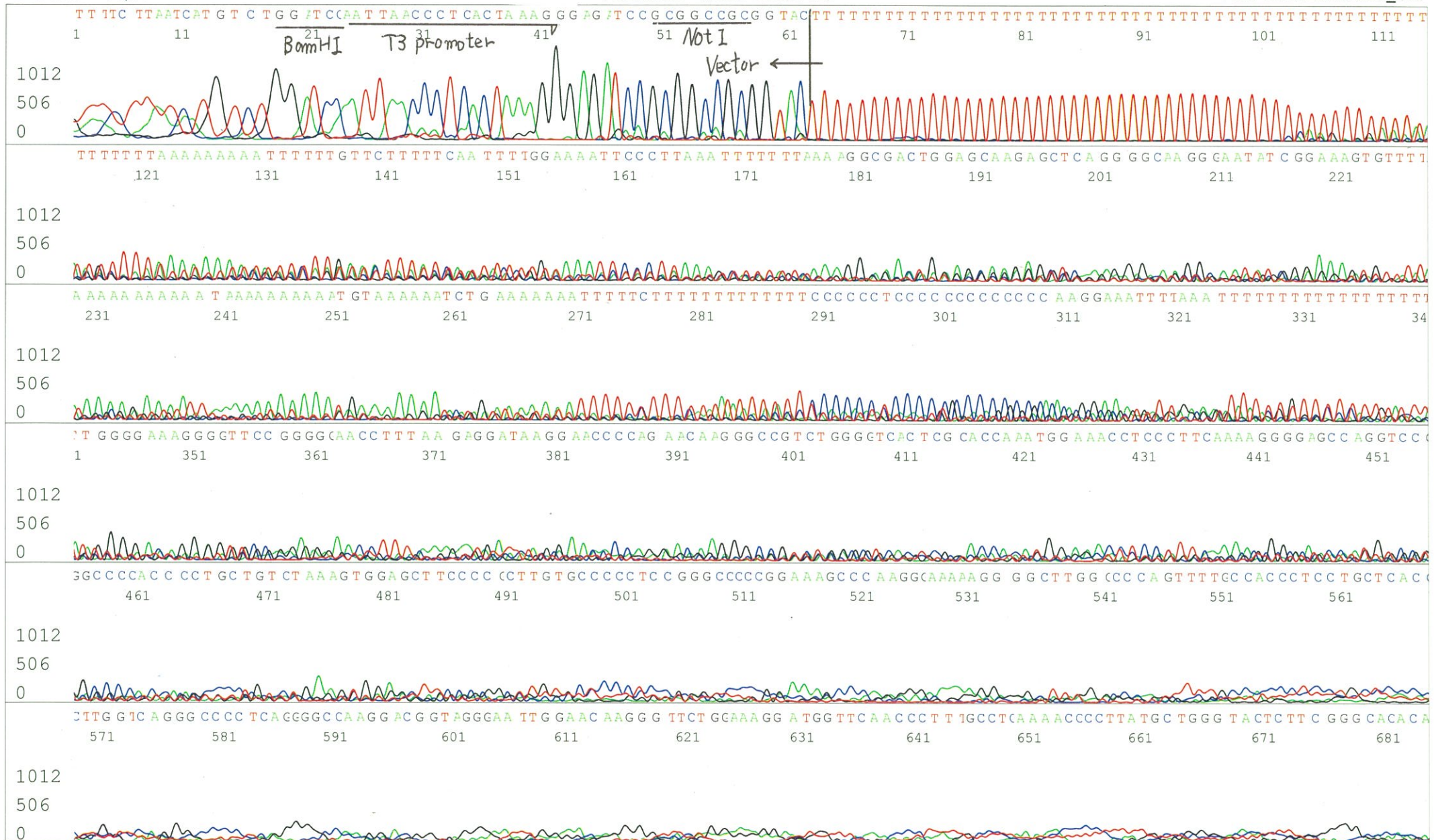
5' GCATTCTAGTTGTGGTTTGTCC 3'

Pts 1757 to 8706 Pk1 Loc:1725

Spacing:10.89 Pts/Panel1350

Version 6.0 HiSQV Bases: 125

Plate Name: 20191225\_GNP



S/N G:41 A:47 T:28 C:41

Primer C : Poly(A) region primer #0

7677\_RBd19A02\_A9Ln\_GNP Mixture

Dec 25,2019 09:41AM, JST

KB.bcp

KB\_3500\_POP7\_BDTv3.mob

Dec 25,2019 09:55AM, JST

KB 1.4.1.8 Cap:7

5' TTTTTTTTTTTTTTTTTTTTTTNNN 3'

Pts 1739 to 8694 Pk1 Loc:1707

Spacing:10.48 Pts/Panel1350

Version 6.0 HiSQV Bases: 642

Plate Name: 20191225\_GNP

