

RIKEN Clone ID : RBd15F02

Vector : pGCAP10

Gene	PCSK6	
RefSeq_mRNA	NM_002570.4	4571 bp

● Plasmid DNA purification

Date : 180710

Culture : LB (100 ug/ml Ampicillin) 5 ml -> at 37 deg C O/N

Date : 180711

Purification : QIAGEN Miniprep kit -> dH₂O 100 ul

● Digestion by restriction enzyme/Concentration calibration

Date : 180711

DNA concentration (O.D.): 37 ng/ul

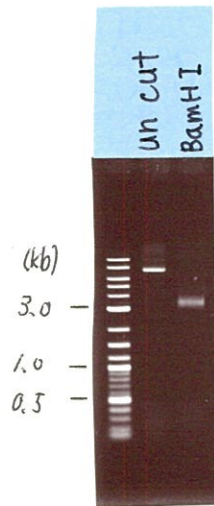
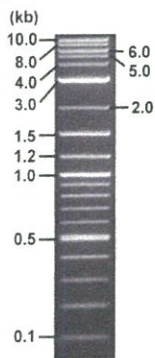
< Size of fragment expected from this clone >

DNA	<u>2.7</u> ul
Enzyme (BamHI)	1 ul
Buffer H	1 ul
dH ₂ O	<u>5.3</u> ul
Total	10 ul

BamHI 3.1kb (vector), 4.8 kb (unsure)

Electrophoresis : 1% agarose gel, 1x TAE Buffer

Marker : 2-Log DNA Ladder (NEB#N3200L)



● Confirmation of the insertion sequence

Date : 180717

Primer A	pGCAP-F
Primer B	pGCAP-R
Primer C	Poly(A) region
List of Sequencing Primers	http://dna.brc.riken.jp/en/NRCDhum2en.html

● Adjust plasmid DNA solution to 25 ng/ul

Date : 180717

DNA (<u>37</u> ng/ul)	<u>68.0</u> ul
10x TE	<u>10.0</u> ul
dH ₂ O	<u>22.6</u> ul
Total	<u>100.6</u> ul

● Shipping

Conc. : 25 ng/μl, Volume : 40 μl

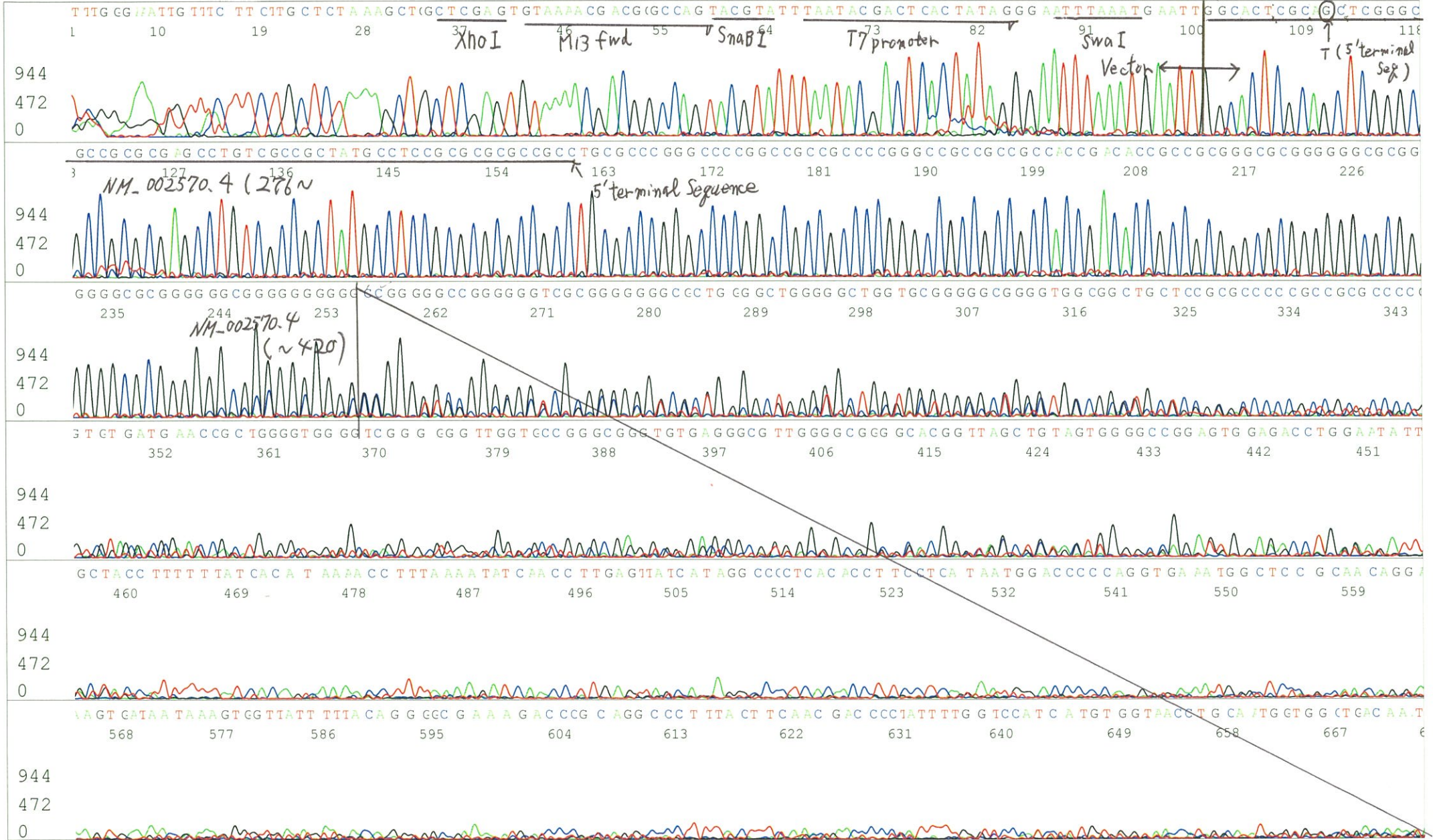
~~Conc. : ng/μl, Volume : μl~~

APPROVED BY :



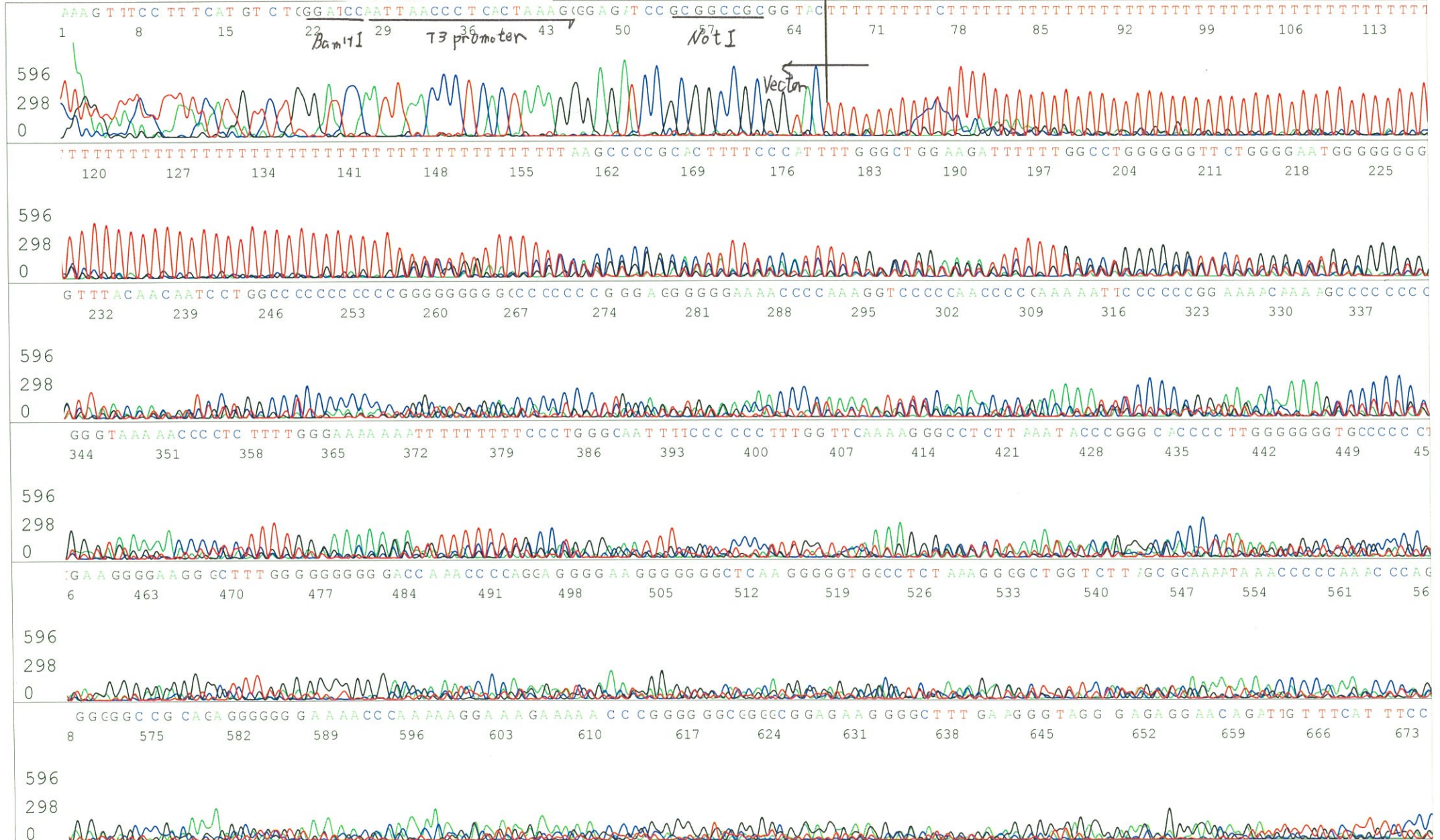
S/N G:12 A:7 T:6 C:14
KB.bcp
KB 1.4.1.8 Cap:1

Primer A : pGCAP-F
5' CTCAGTGGATGTTGCCTTTAC 3'



S/N G:5 A:6 T:6 C:6
KB.bcp
KB 1.4.1.8 Cap:4

Primer B : pGCAP-R
5' GCATTCTAGTTGTGGTTTGTCC 3'



S/N G:6 A:7 T:7 C:8

Primer C : Poly(A) region primer #0

RBd15F02_A8Fp_GNPMixture

Jul 12,2018 02:45PM, JST

KB.bcp

KB_3500_POP7_BDTv3.mob

Jul 12,2018 03:25PM, JST

KB 1.4.1.8 Cap:5

5' TTTTTTTTTTTTTTTTTTTTTTNNN 3'

Pts 1416 to 13374 Pk1 Loc:1393

Spacing:12.07 Pts/Panel1350

Version 6.0 HiSQV Bases: 844

Plate Name: 20180712_dnabank

