

RIKEN Clone ID : RBd13C09

Vector : pGCAP10

Gene	JMJD4	
RefSeq_mRNA	NM_023007.3	2484 bp

● Plasmid DNA purification

Date : 21.09.21

Culture : LB (100 ug/ml Ampicillin) 5 ml → at 37 deg C O/N

Date : 21.09.22

Purification : QIAGEN Miniprep kit → dH₂O 100 ul

● Digestion by restriction enzyme/Concentration calibration

Date : 21.09.22

DNA concentration (O.D.): 265 ng/ul

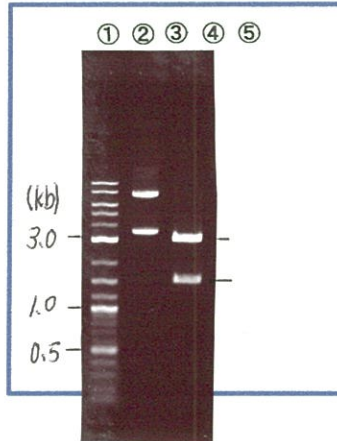
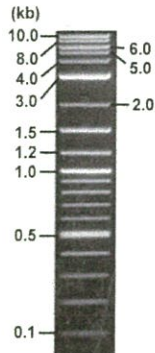
< Size of fragment expected from this clone >

DNA	<u>0.4</u>	ul
Enzyme (BamHI)		1 ul
Buffer H		1 ul
dH ₂ O	<u>7.6</u>	ul
Total		10 ul

BamHI 3.1kb (vector), 2.2, 0.4, <0.1 kb (unsure)

Electrophoresis : 1% agarose gel, 1x TAE Buffer

Marker : 2-Log DNA Ladder (NEB#N3200L)



①:Marker
②:uncut
③:BamHI

● Confirmation of the insertion sequence

Date : 21.10.22

Primer A	pGCAP-F
Primer B	pGCAP-R
Primer C	Poly(A) region
List of Sequencing Primers	http://dna.brc.riken.jp/en/NRCDhum2en.html

● Adjust plasmid DNA solution to 25 ng/ul

Date : 21.12.2

DNA (<u>265</u> ng/ul)	<u>80.0</u>	ul
10x TE	<u>84.8</u>	ul
dH ₂ O	<u>683.2</u>	ul
Total	<u>848.0</u>	ul

● Shipping

Conc. : 25 ng/μl, Volume : 40 μl

~~Conc. : ng/μl, Volume : μl~~



APPROVED BY :

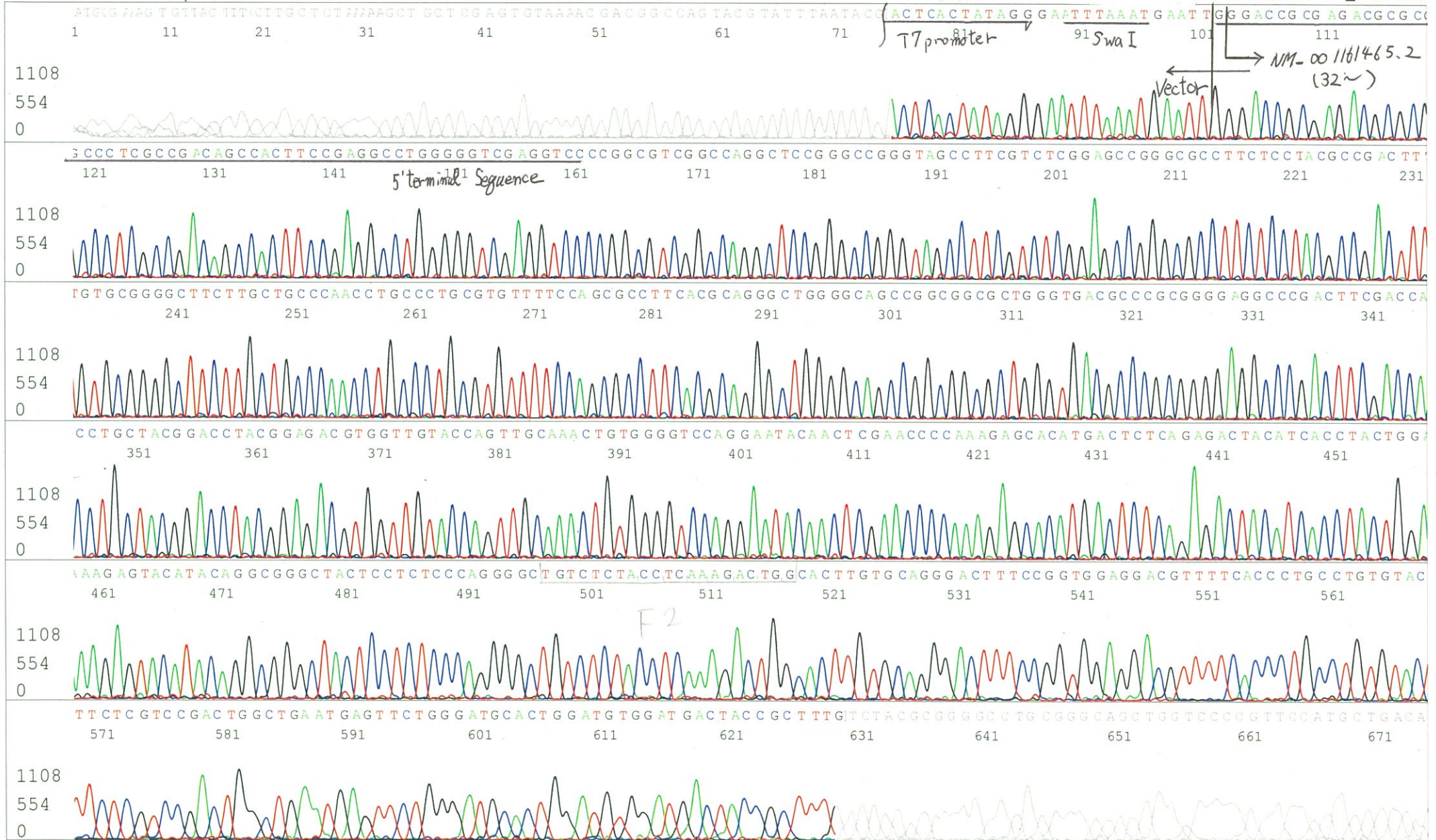
S/N G:23 A:22 T:14 C:26
KB.bcp
KB 1.4.1.8 Cap:15

Primer A : pGCAP-F
5' CTCAGTGGATGTTGCCCTTAC 3'

7677_RBd13C09_B1II_pGCAP_F_E03_15_ABI24
7677_RBd13C09_B1II_pGCAP_F
KB_3500_POP7_BDTv3.mob
Pts 1744 to 8707 Pk1 Loc:1712
Version 6.0 HiSQV Bases: 660

Gray line indicates quality value
(QV) < 40.

Inst Model/Name 3500/3500 Instrument
Sep 24,2021 09:46AM, JST
Sep 24,2021 10:01AM, JST
Spacing:10.79 Pts/Panel1350
ate Name: 20210924_KatoClone



S/N G:42 A:34 T:18 C:33
KB.bcp
KB 1.4.1.8 Cap:6

Primer C : Poly(A) region primer #0
5' TTTTTTTTTTTTTTTTTTTTTTVNN 3'

7677_RBd13C09_B1II_GNP Mixture
KB_3500_POP7_BDTv3.mob
Pts 1733 to 8704 Pk1 Loc:1701
Version 6.0 HiSQV Bases: 656

Gray line indicates quality value
(QV) < 40.

Sep 28,2021 10:06AM, JST
Sep 28,2021 10:21AM, JST
Spacing:10.52 Pts/Panel1350
Plate Name: 20210928_GNP

