

**RIKEN Clone ID : RBd06H10**

Vector : pGCAP10

Gene	CDCA2	
RefSeq_mRNA	NM_152562.2	3735 bp
	CDS	3072 bp
		480..3551
	5' position	268

● Plasmid DNA purification

Date : 140924  
Date : 140925

Culture : LB (100 ug/ml Ampicillin) 5 ml -> at 37 deg C O/N  
Purification : QIAGEN Miniprep kit -> dH<sub>2</sub>O 100 ul

● Digestion by restriction enzyme/Concentration calibration

Date : 140925

DNA concentration (O.D.): 221 ng/ul

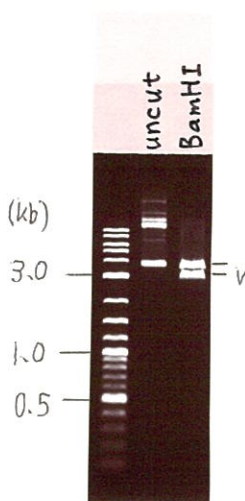
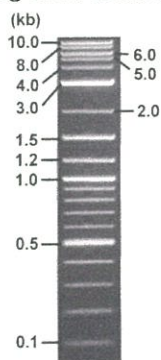
<Size of fragment expected from RBd06H10 >

DNA	<u>0.2</u>	ul
Enzyme (BamHI)		1 ul
Buffer H		1 ul
dH <sub>2</sub> O	<u>7.8</u>	ul
Total		10 ul

BamHI 3183(vector), 3936 bp (unsure)

Electrophoresis : 1% agarose gel, 1x TAE Buffer

Marker : 2-Log DNA Ladder (NEB#N3200L)



● Confirmation of the insertion sequence

Date : 140930

Primer A	pGCAP-F
Primer B	pGCAP-R
Primer C	Poly(A) region
List of Sequencing Primers	<a href="http://dna.brc.riken.jp/en/NRCDhum2e.n.html">http://dna.brc.riken.jp/en/NRCDhum2e.n.html</a>

● Adjust plasmid DNA solution to 25 ng/ul

Date : 140930

DNA ( <u>221</u> ng/ul)	<u>85.0</u>	ul
10x TE	<u>75.1</u>	ul
dH <sub>2</sub> O	<u>591.3</u>	ul
Total	<u>751.4</u>	ul

● Shipping

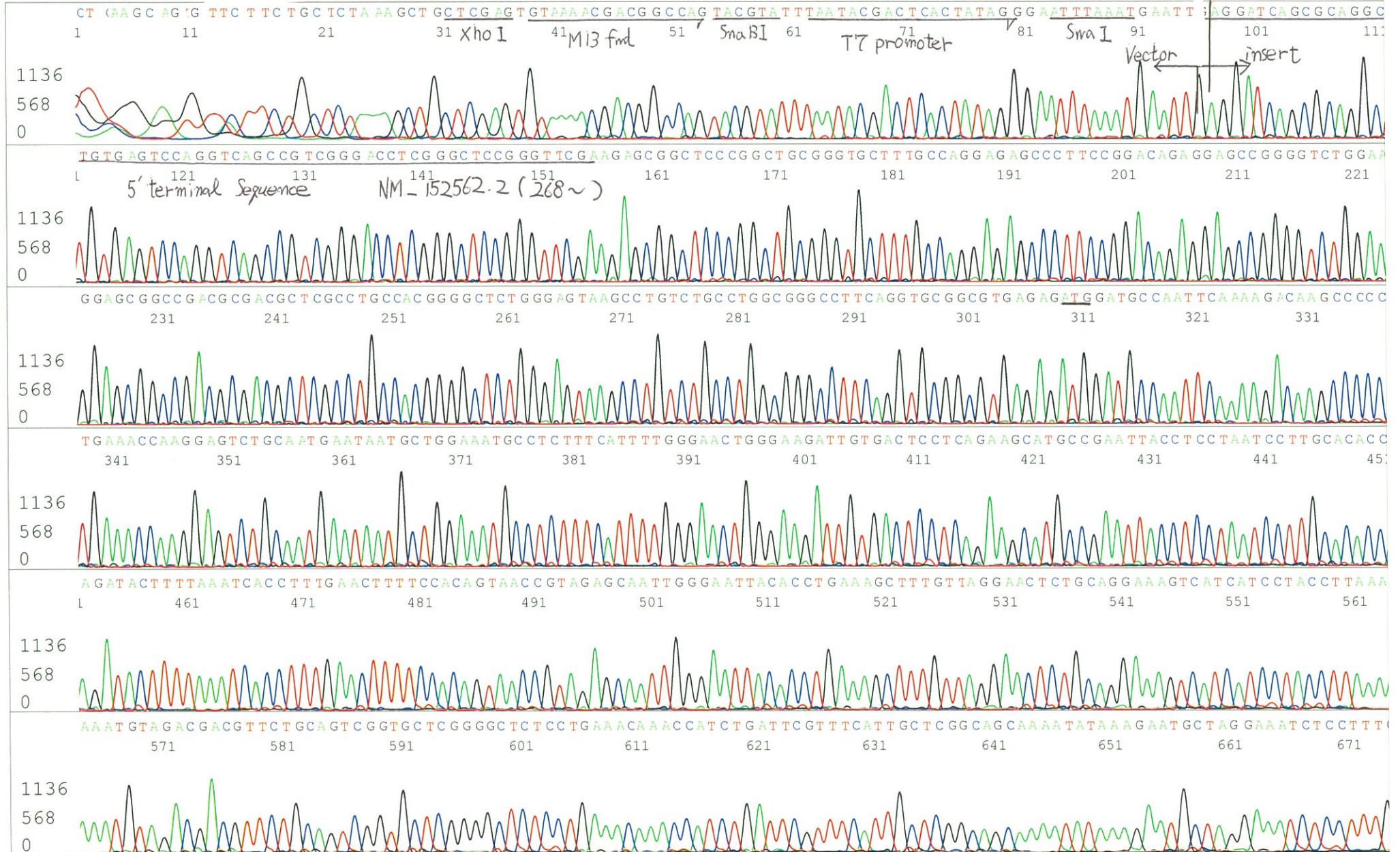
Conc. : 25 ng/μl, Volume : 40 μl

~~Conc. : \_\_\_\_\_ ng/μl, Volume : \_\_\_\_\_ μl~~

APPROVED BY :

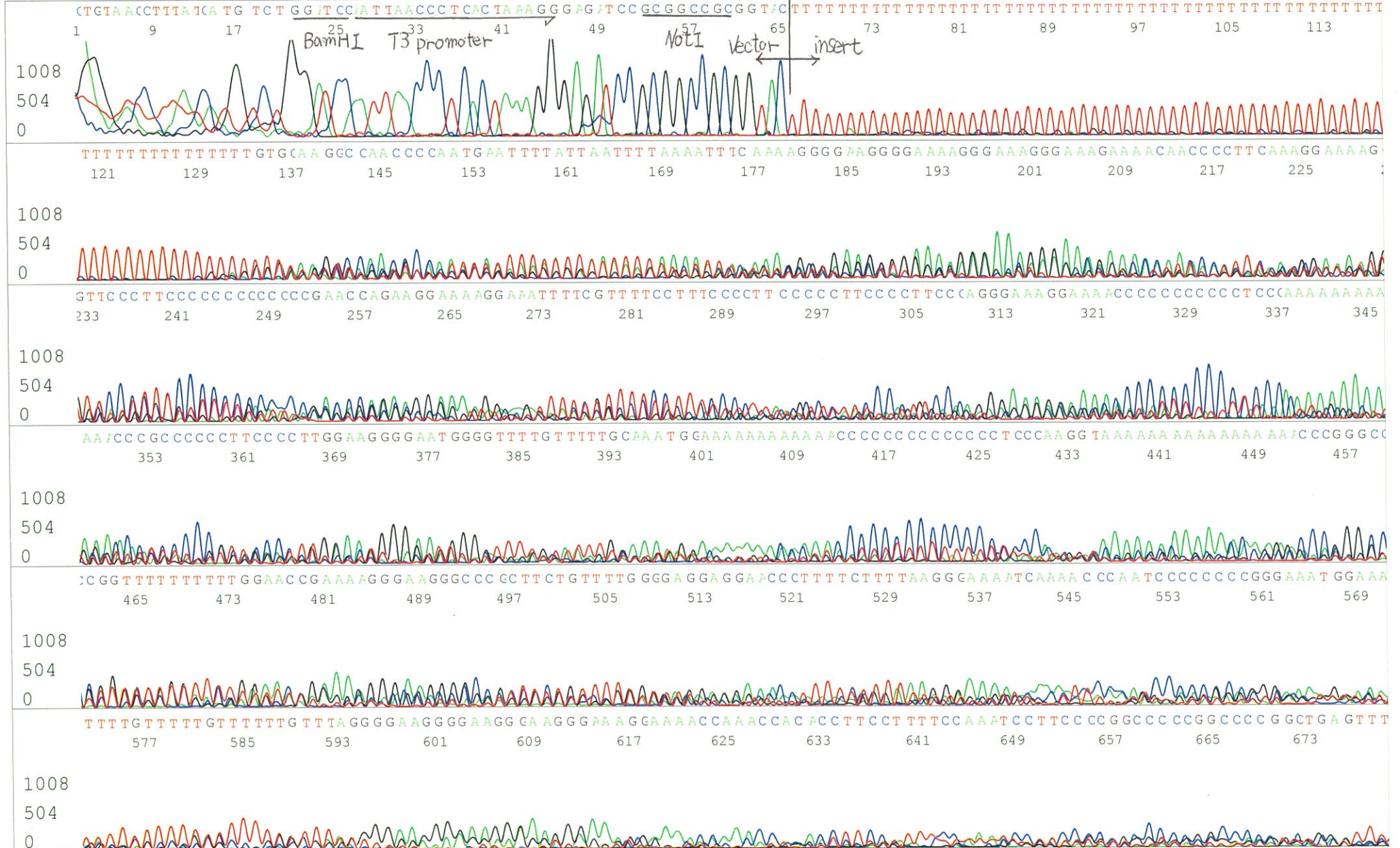


S/N G:531 A:590 T:433 C:5 Primer A : pGCAP-F  
KB.bcp  
KB 1.4.1.8 Cap:21 5' CTCAGTGGATGTTGCCTTTAC 3'





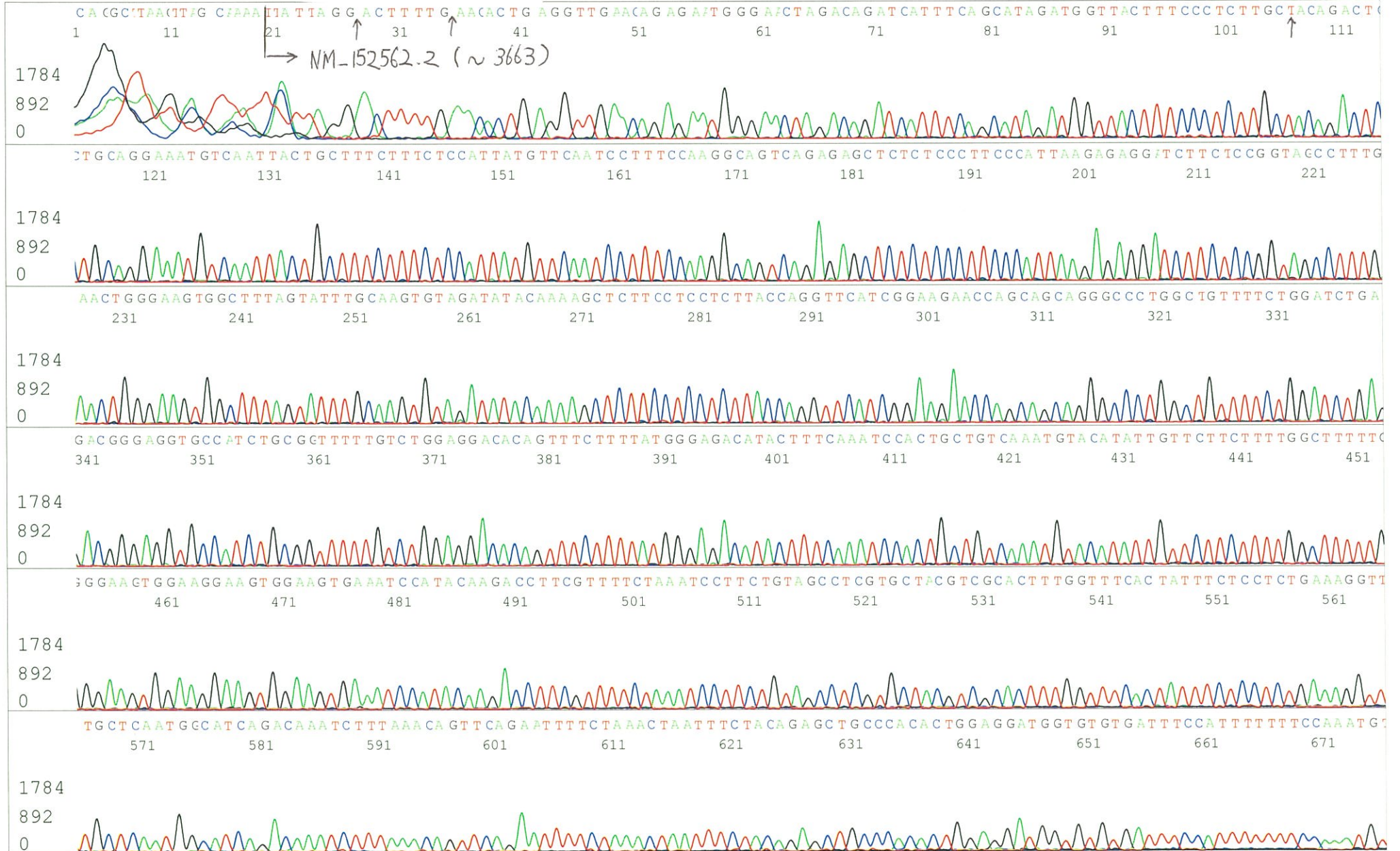
S/N G:11 A:13 T:13 C:11  
KB.bcp  
KB 1.4.1.8 Cap:24  
Primer B : pGCAP-R  
5' GCATTCTAGTTGTGGTTTGTCC 3'





S/N G:29 A:22 T:19 C:18  
KB.bcp  
KB 1.4.1.8 Cap:5

Primer C : Poly(A) region primer #0  
5' TTTTTTTTTTTTTTTTTTTTTTNNN 3'



S/N G:29 A:22 T:19 C:18  
KB.bcp  
KB 1.4.1.8 Cap:5

