

RIKEN Clone ID : RBb71F04

Vector : pGCAP1

Gene	ASXL1	
RefSeq_mRNA	NM_015338.5	7056 bp
	CDS	4626 bp
5' position		-

● Plasmid DNA purification

Date : 160905

Culture : LB (100 ug/ml Ampicillin) 5 ml → at 37 deg C O/N

Date : 160906

Purification : QIAGEN Miniprep kit → dH₂O 100 ul

● Digestion by restriction enzyme/Concentration calibration

Date : 160906

DNA concentration (O.D.): 258 ng/ul

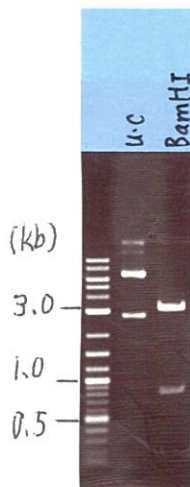
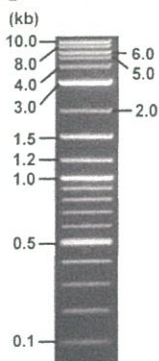
< Size of fragment expected from this clone >

DNA	0.4	ul
Enzyme (BamHI)	1	ul
Buffer H	1	ul
dH ₂ O	7.6	ul
Total	10	ul

BamHI 3.1kb (vector), 4.2, 2.1, 1.0 kb (unsure)

Erectrophoresis : 1% agarose gel, 1x TAE Buffer

Marker : 2-Log DNA Ladder (NEB#N3200L)



● Confirmation of the insertion sequence

Date : 160909

Primer A	pGCAP-F
Primer B	pGCAP-R
Primer C	Poly(A) region
List of Sequencing Primers	http://dna.brc.riken.jp/en/NRCDhum2en.html

● Adjust plasmid DNA solution to 25 ng/ul

Date : 160909

DNA (<u>258</u> ng/ul)	<u>84.0</u> ul
10x TE	<u>86.5</u> ul
dH ₂ O	<u>696.2</u> ul
Total	866.9 ul

● Shipping



Conc. : 25 ng/μl, Volume : 40 μl



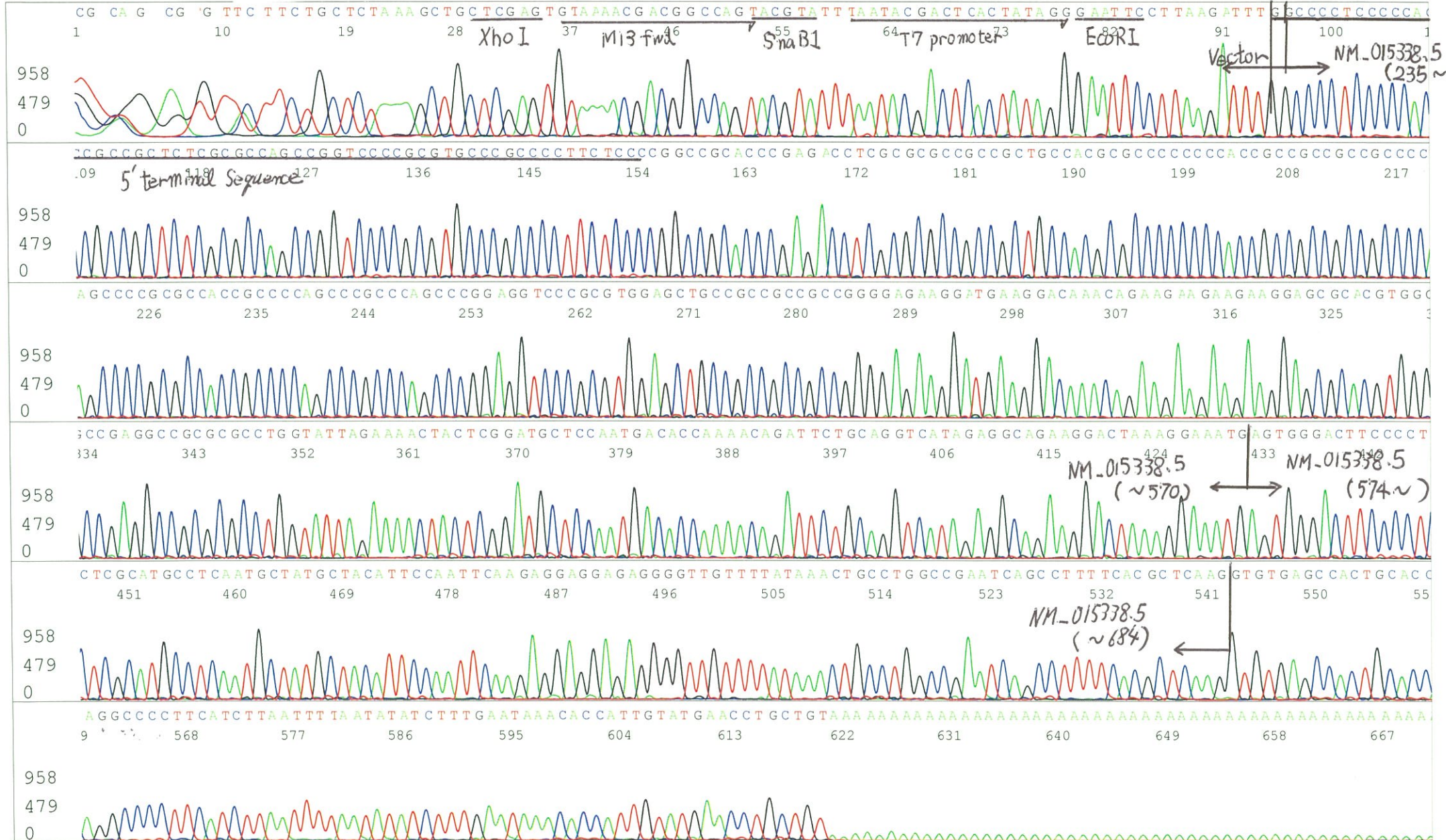
~~Conc. : — ng/μl, Volume : — μl~~

APPROVED BY :

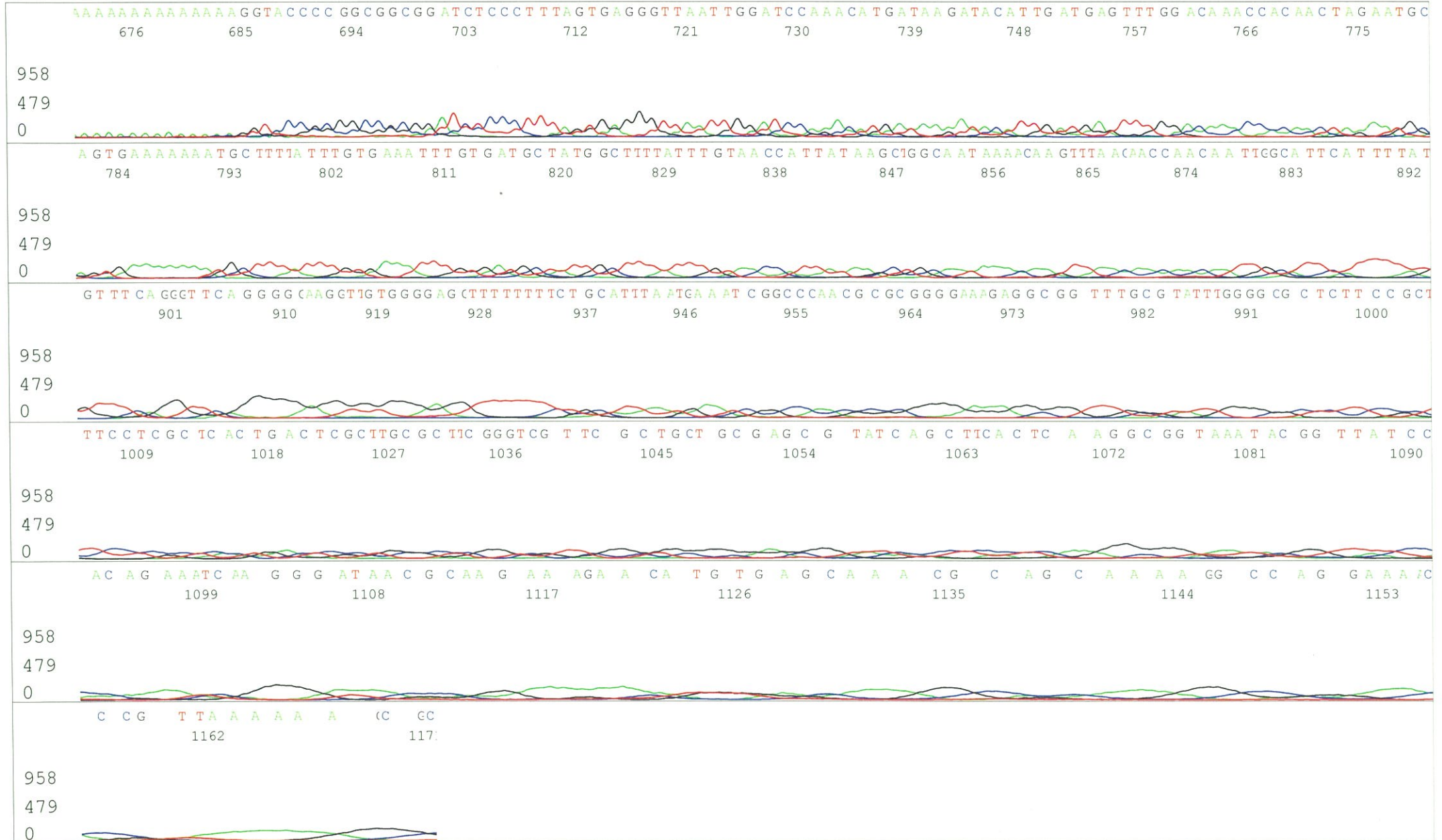


S/N G:532 A:411 T:411 C:619
KB.bcp
KB 1.4.1.8 Cap:1

Primer A : pGCAP-F
5' CTCAGTGGATGTTGCCTTTAC 3'



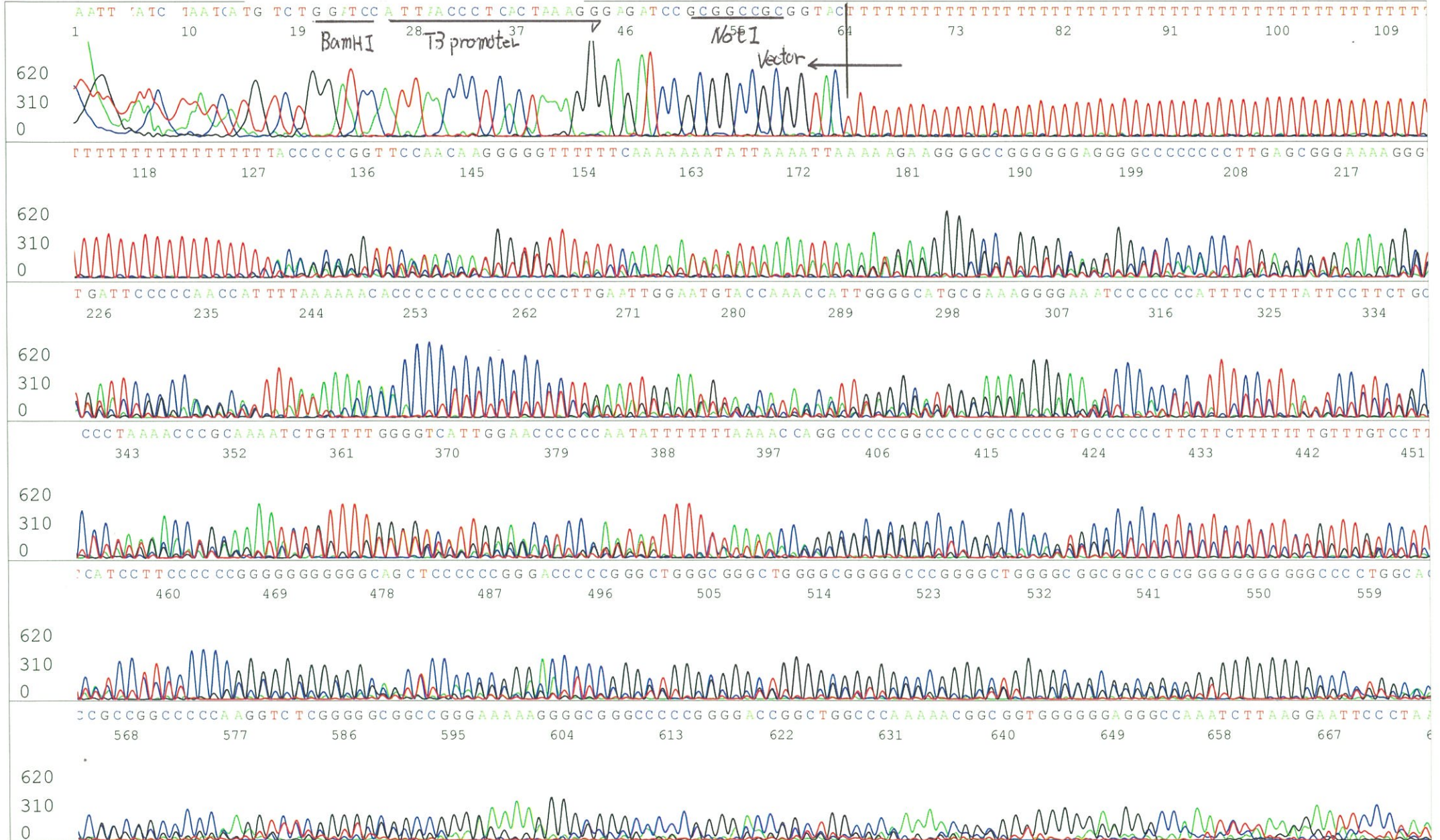
S/N G:532 A:411 T:411 C:619
KB.bcp
KB 1.4.1.8 Cap:1



S/N G:13 A:13 T:14 C:17
KB.bcp
KB 1.4.1.8 Cap:4

Primer B : pGCAP-R

5' GCATTCTAGTTGTGGTTTGTCC 3'

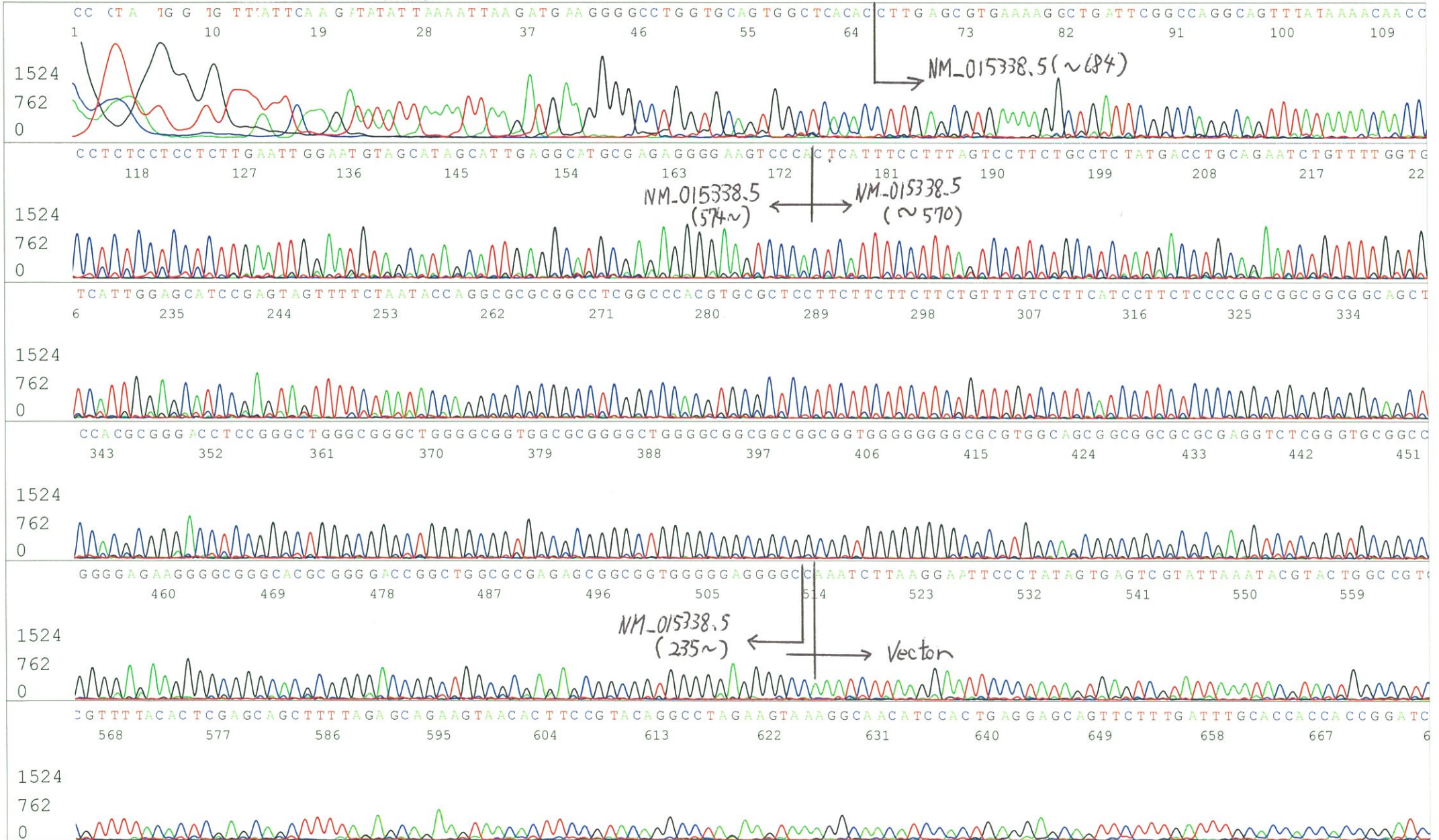


S/N G:13 A:13 T:14 C:17
KB.bcp
KB 1.4.1.8 Cap:4



S/N G:274 A:179 T:221 C:317
KB.bcp
KB 1.4.1.8 Cap:7

Primer C : Poly(A) region primer #0
5' TTTTTTTTTTTTTTTTTTTTTTNNN 3'



S/N G:274 A:179 T:221 C:317
KB.bcp
KB 1.4.1.8 Cap:7

