

RIKEN Clone ID : RBb59F11

Vector : pGCAP1

| | | |
|-------------|-------------|---------|
| Gene | KIF19 | |
| RefSeq_mRNA | NM_153209.3 | 3670 bp |
| | <i>CDS</i> | 2997 bp |
| 5' position | | 34 |

● Plasmid DNA purification

Date : 170116

Culture : LB (100 ug/ml Ampicillin) 5 ml → at 37 deg C O/N

Date : 170117

Purification : QIAGEN Miniprep kit → dH₂O 100 ul

● Digestion by restriction enzyme/Concentration calibration

Date : 170117

DNA concentration (O.D.): 341 ng/ul

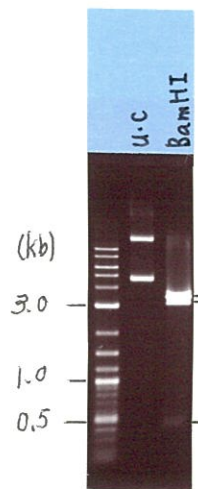
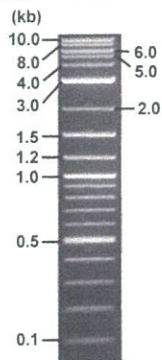
< Size of fragment expected from this clone >

| | |
|-------------------|---------------|
| DNA | <u>0.3</u> ul |
| Enzyme (BamHI) | 1 ul |
| Buffer H | 1 ul |
| dH ₂ O | <u>7.7</u> ul |
| Total | 10 ul |

BamHI 3.1kb (vector), 3.4, 0.42 kb (unsure)

Electrophoresis : 1% agarose gel, 1x TAE Buffer

Marker : 2-Log DNA Ladder (NEB#N3200L)



● Confirmation of the insertion sequence

Date : 170119

| | |
|----------------------------|---|
| Primer A | pGCAP-F |
| Primer B | pGCAP-R |
| Primer C | Poly(A) region |
| List of Sequencing Primers | http://dna.brc.riken.jp/en/NRCDhum2en.html |

● Adjust plasmid DNA solution to 25 ng/ul

Date : 170119

| | |
|-------------------------|------------------|
| DNA (<u>341</u> ng/ul) | <u>86.0</u> ul |
| 10x TE | <u>117.3</u> ul |
| dH ₂ O | <u>969.7</u> ul |
| Total | 1173.0 ul |

● Shipping

Conc. : 25 ng/μl, Volume : 40 μl

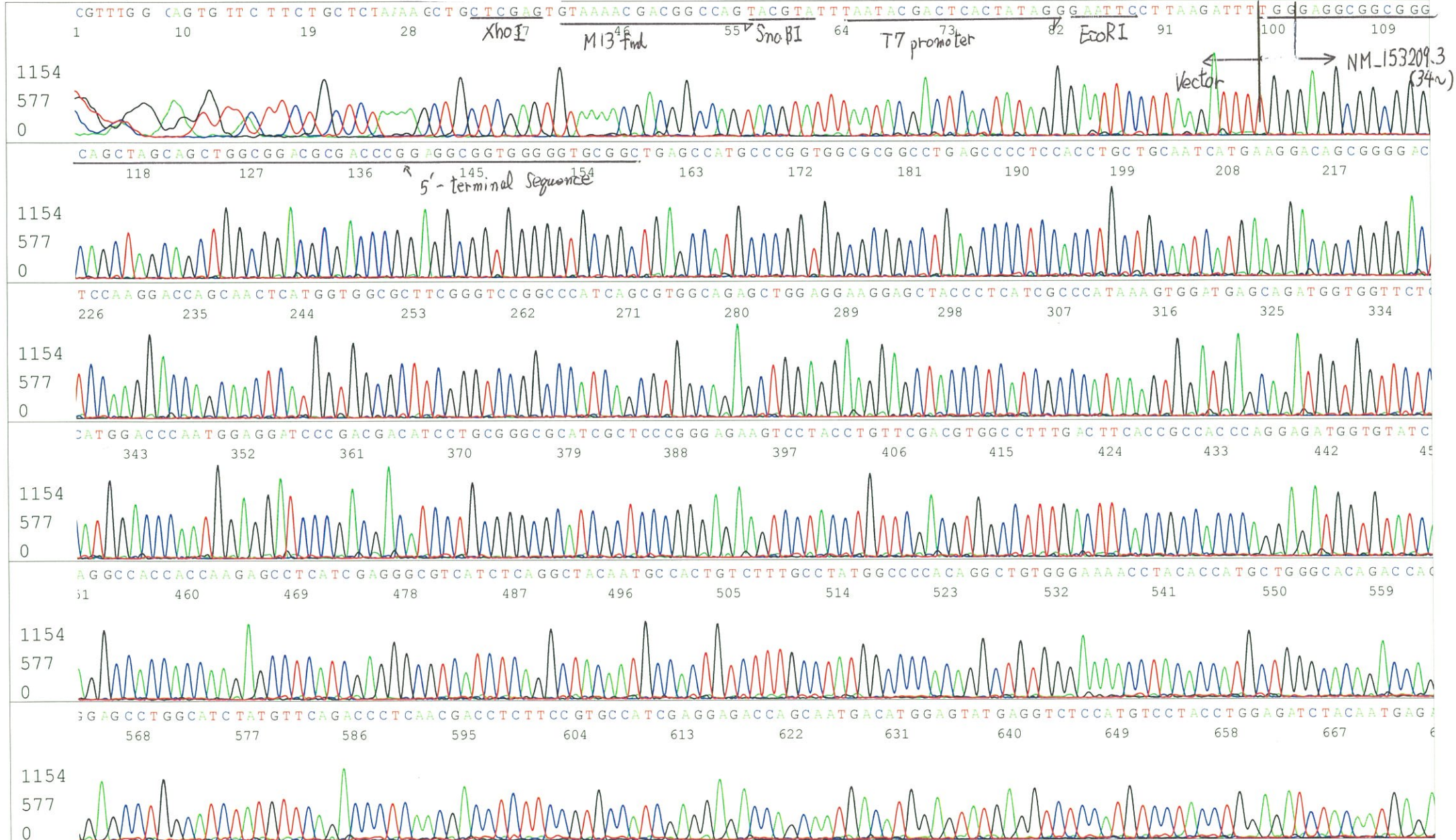
~~Conc. : 25 ng/μl, Volume : 40 μl~~

APPROVED BY :

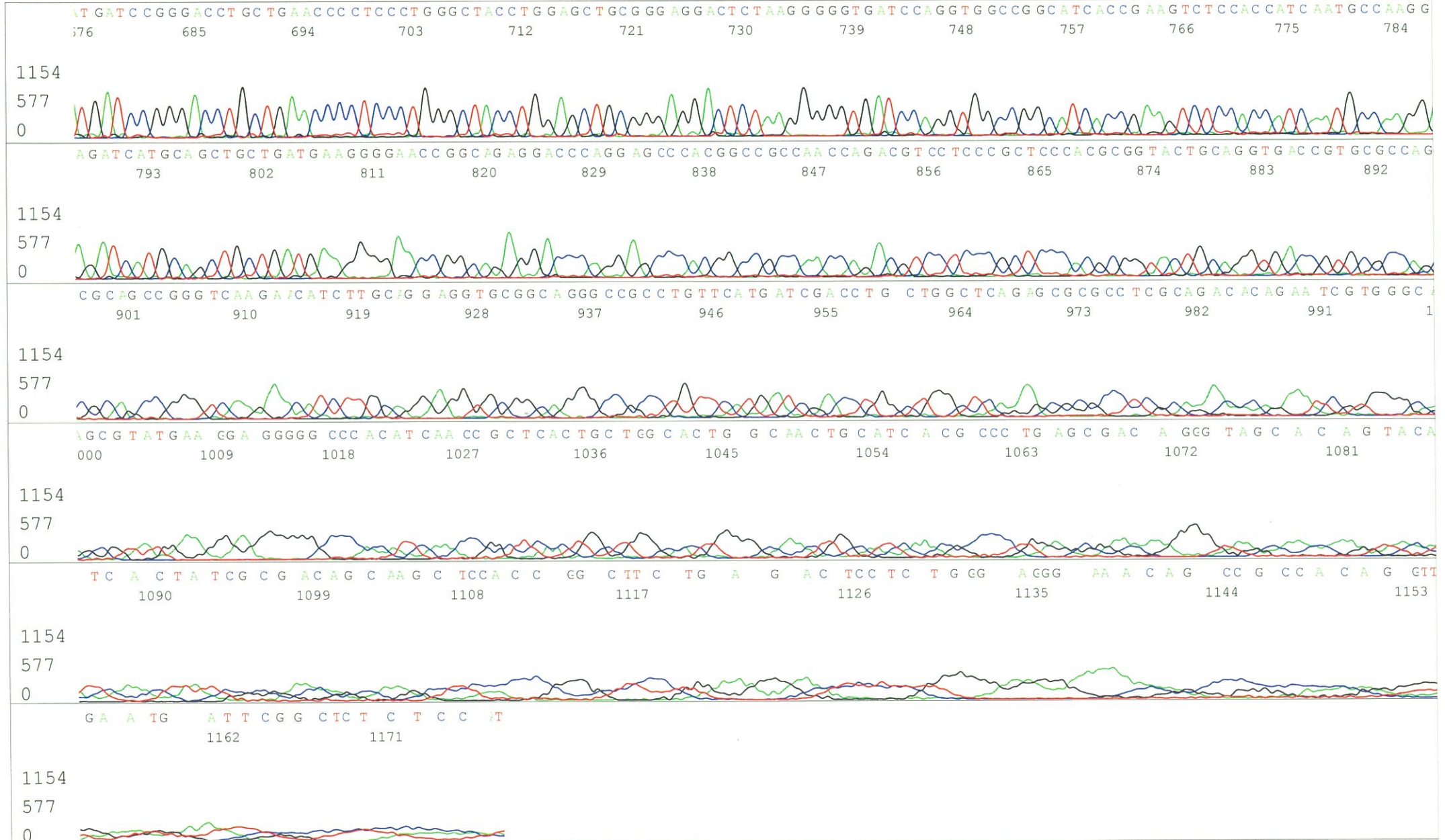


S/N G:61 A:81 T:75 C:96
 KB.bcp
 KB 1.4.1.8 Cap:3

Primer A : pGCAP-F
 5' CTCAGTGGATGTTGCCTTTAC 3'

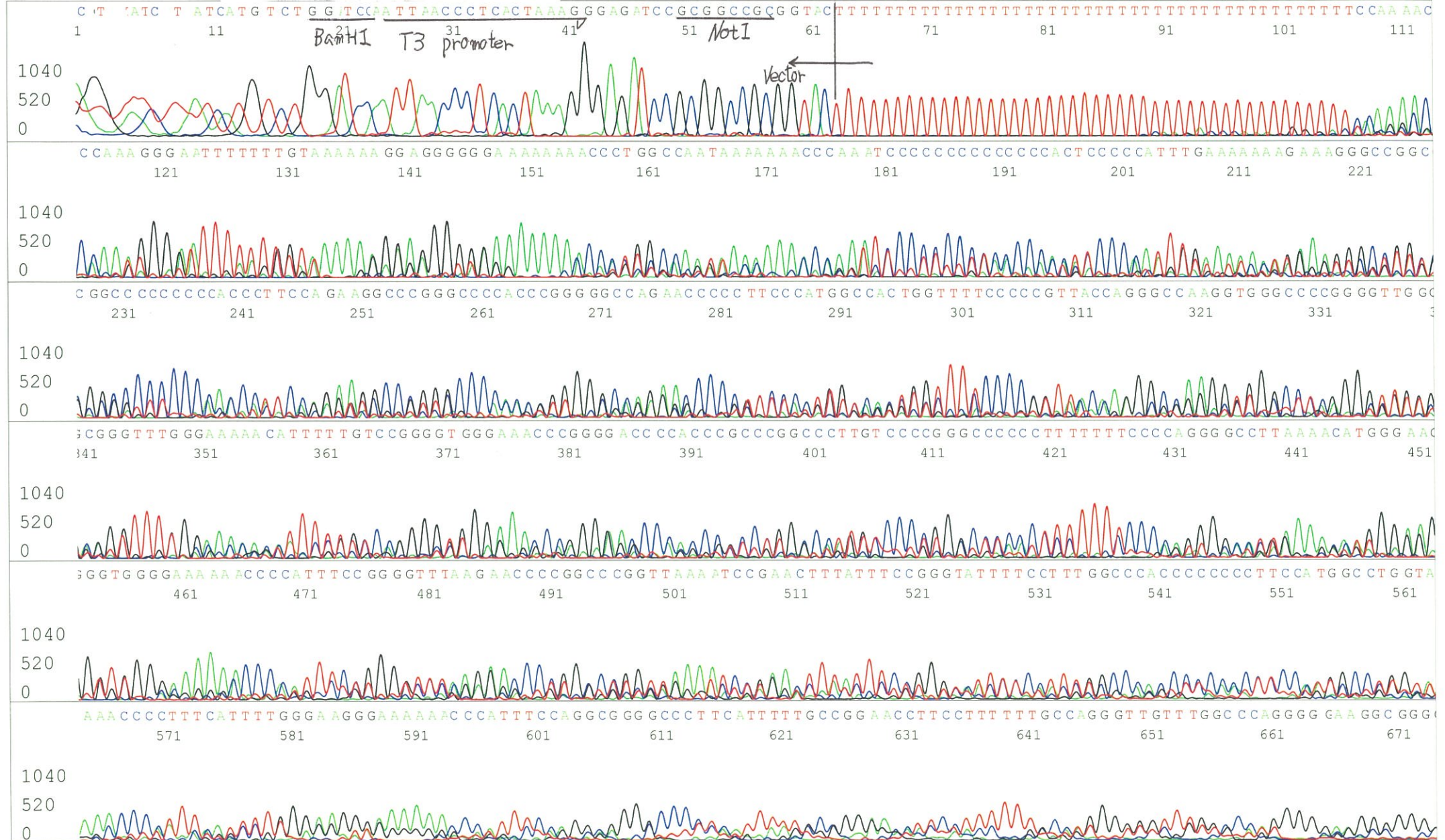


S/N G:61 A:81 T:75 C:96
KB.bcp
KB 1.4.1.8 Cap:3

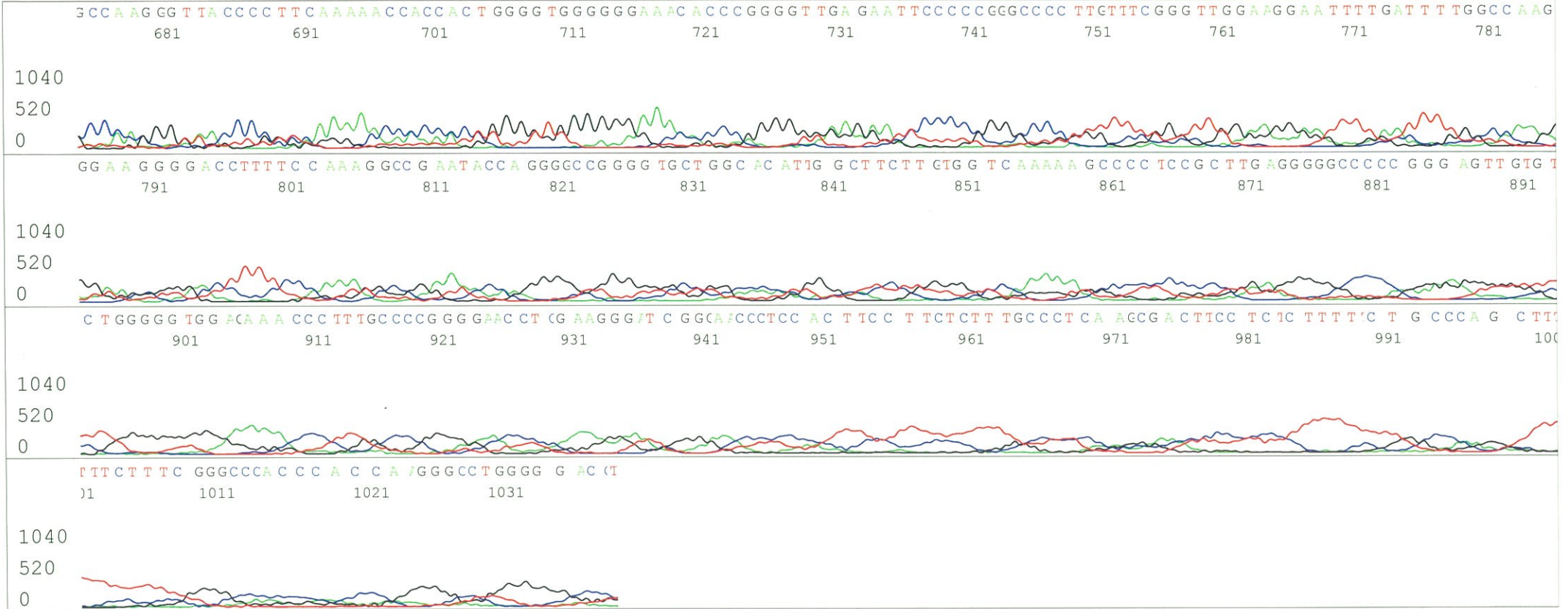


S/N G:41 A:47 T:55 C:84
KB.bcp
KB 1.4.1.8 Cap:4

Primer B : pGCAP-R
5' GCATTCTAGTTGTGGTTTGTCC 3'



S/N G:41 A:47 T:55 C:84
KB.bcp
KB 1.4.1.8 Cap:4



S/N G:10 A:10 T:11 C:16

Primer C : Poly(A) region primer #0

7676_RBb59F11_A7Ac_GNPmixture

KB_3500_POP7_BDTv3.mob

Pts 1427 to 13957 Pk1 Loc:1404

Version 6.0 HiSQV Bases: 998

Jan 19,2017 09:50AM, JST

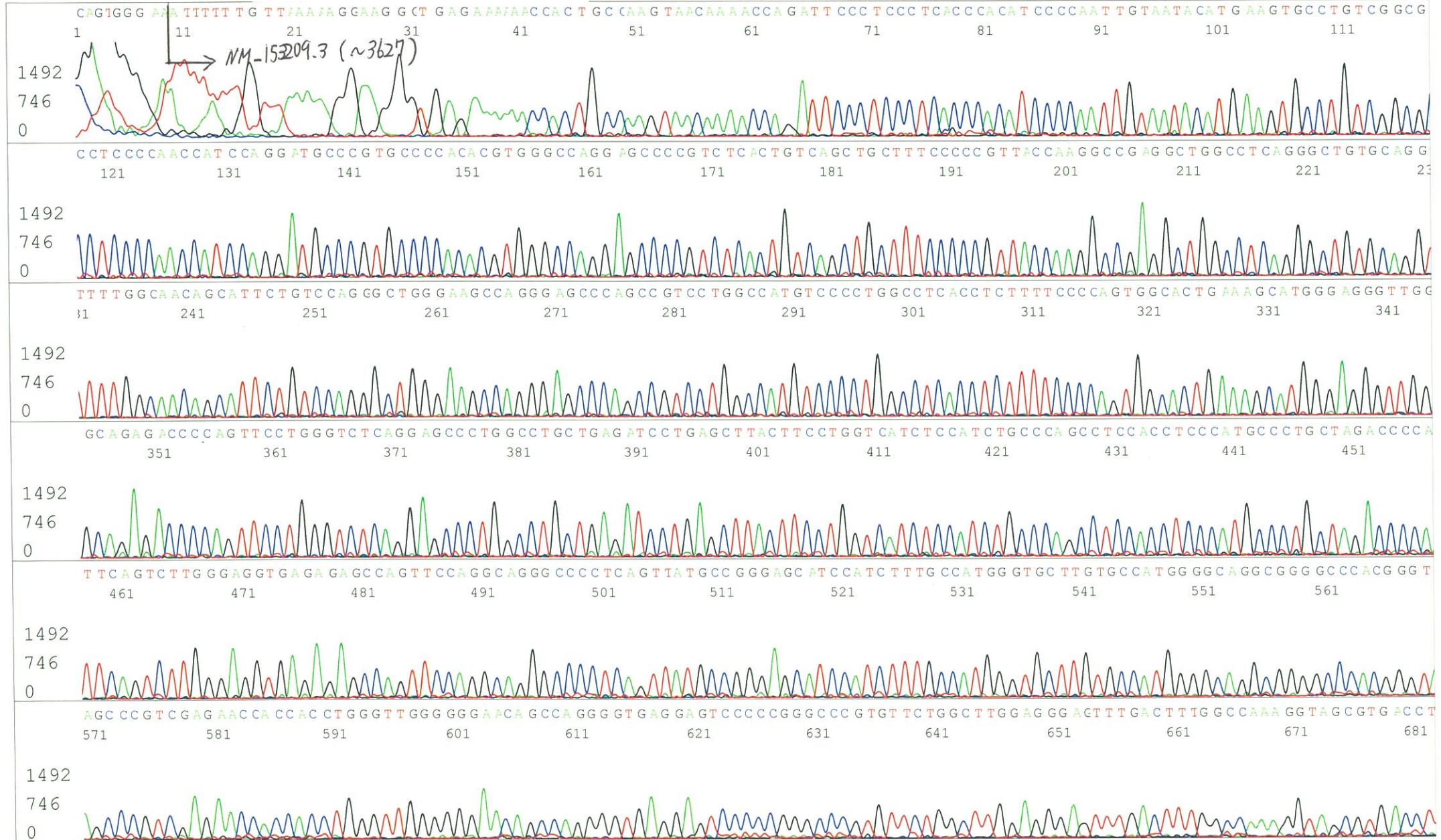
Jan 19,2017 10:16AM, JST

Spacing:12.6 Pts/Panel1350

Plate Name: 20170119_GNP

KB 1.4.1.8 Cap:5

5' TTTTTTTTTTTTTTTTTTTTTTNNN 3'



S/N G:10 A:10 T:11 C:16
KB.bcp
KB 1.4.1.8 Cap:5

