

C24

RIKEN Clone ID : RBb44A10

Vector : pGCAP1

Gene	CREBZF	
RefSeq_mRNA	NM_001039618.3	7566 bp

● Plasmid DNA purification

Date : 200114

Culture : LB (100 ug/ml Ampicillin) 5 ml -> at 37 deg C O/N

Date : 200122

Purification : QIAGEN Miniprep kit -> dH₂O 100 ul

● Digestion by restriction enzyme/Concentration calibration

Date : 200122

DNA concentration (O.D.): 280 ng/ul

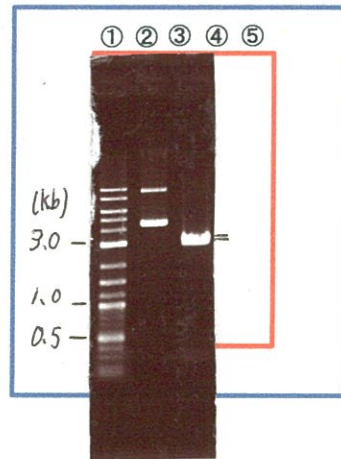
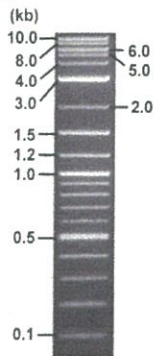
< Size of fragment expected from this clone >

DNA	<u>0.4</u> ul
Enzyme (BamHI)	1 ul
Buffer H	1 ul
dH ₂ O	<u>7.6</u> ul
Total	10 ul

BamHI 3.1kb (vector), 6.0, 1.4, 0.3 kb (unsure)

Electrophoresis : 1% agarose gel, 1x TAE Buffer

Marker : 2-Log DNA Ladder (NEB#N3200L)



①:Marker
②:uncut
③:BamHI

● Confirmation of the insertion sequence

Date : 21.04.27

Primer A	pGCAP-F
Primer B	pGCAP-R
Primer C	Poly(A) region
List of Sequencing Primers	http://dna.brc.riken.jp/en/NRCDhum2en.html

● Adjust plasmid DNA solution to 25 ng/ul

Date : 21.04.01

DNA (<u>280</u> ng/ul)	<u>80.0</u> ul
10x TE	<u>89.6</u> ul
dH ₂ O	<u>726.4</u> ul
Total	<u>896.0</u> ul

● Shipping



Conc. : 25 ng/μl, Volume : 40 μl



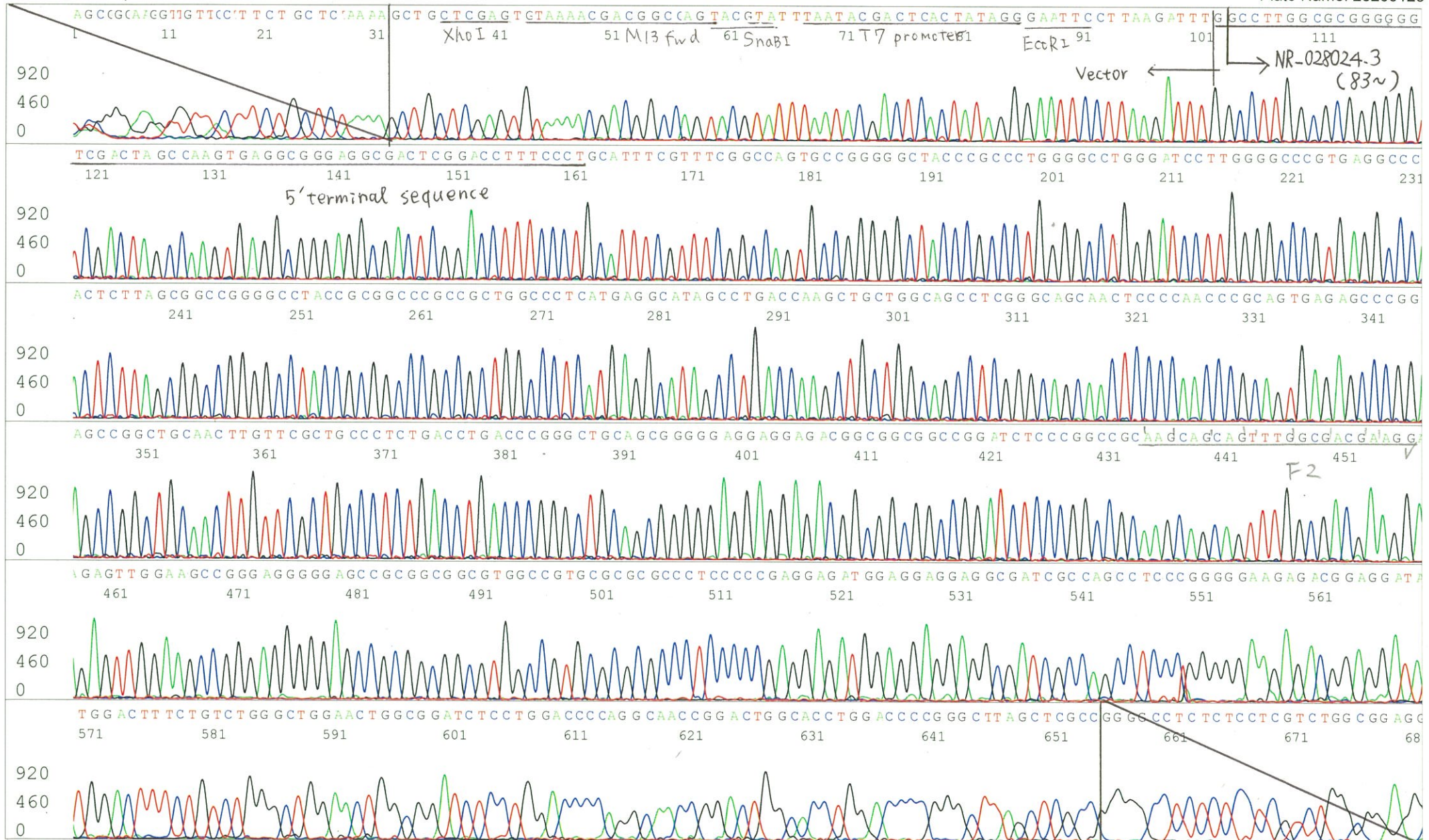
~~Conc. : _____ ng/μl, Volume : _____ μl~~



APPROVED BY :

S/N G:68 A:49 T:32 C:69
KB.bcp
KB 1.4.1.8 Cap:17

Primer A : pGCAP-F
5' CTCAGTGGATGTTGCC^{TTT}TAC 3'



S/N G:24 A:47 T:34 C:30
KB.bcp
KB 1.4.1.8 Cap:20

Primer B : pGCAP-R
5' GCATTCTAGTTGTGGTTTGTCC 3'

